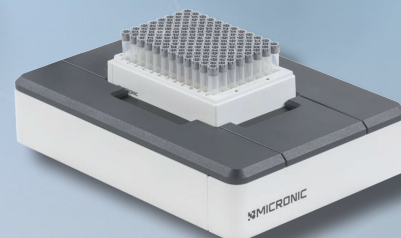
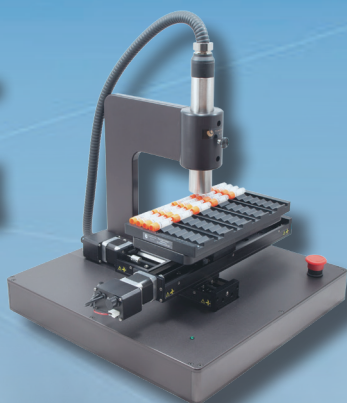
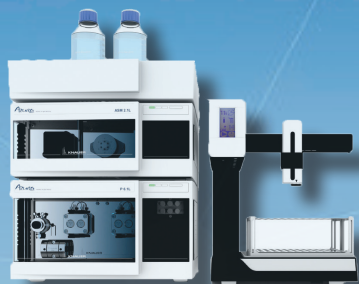


Instrumentation



MJS
BioLynx[®]

1-888-593-5969 • biolynx.ca • tech@biolynx.ca

Looking to Add a Sidekick to Your Lab?

We've got Bench Top Buddies!

Mini, but Mighty! 🐾🐾



Scan for details



© Can Stock Photo / byrdyak



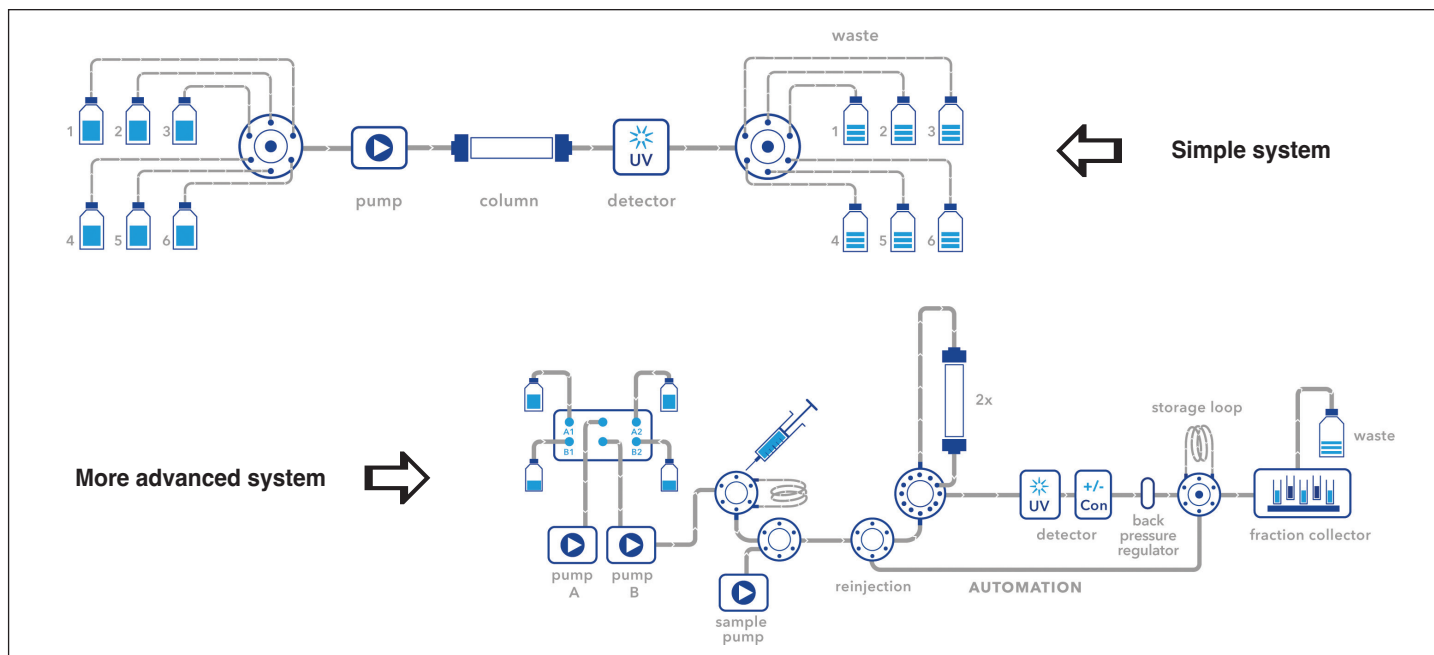
1-888-593-5969 • biolynx.ca • tech@biolynx.ca

BIO HPLC PURIFICATION SYSTEM

Knauer Azura® FPLC Systems

The flexible protein purification platform.

You choose the method (size exclusion, affinity, ion exchange or hydrophobic interaction) and the purification strategy (capture, intermediate or polishing), this system does the rest.



- Buffer delivery: Pre- or post-pump gradient, from 0.1 to 1000 mL/min.
- Buffer selection: Upgradeable up to 24 buffers
- Sample injection options: Manual injection valve, sample pump to process up to 6 samples, autosampler
- Column selection: Choose either a 2-position valve for switching between 2 columns or a multifunction valve for up to 5 columns and reverse flow
- Detectors: Options include UV-Vis single wavelength, UV-Vis multi wavelength, UV-Vis photodiode array, fluorescence, refractive index, electrochemical, conductivity, radioactive, optical rotation, pH and mass spectrometer
- Fraction collection: Choose a fraction valve if you have large volumes to collect, or a fraction collector for many samples
- Pressure control: The system features automatic determination of pressure differentials with an action manager allowing the run to be stopped or the flow to be decreased as required
- Air sensor: Up to 4 air sensors can be installed per system
- User-friendly software allows the integrity of the system to be monitored; a run can be stopped in case of leakage
- Warranty: Industry-best 2-year parts and labour warranty with 24 hr express service available for critical operations (please inquire)
- Knauer's instruments are manufactured in Germany and renowned for top-end specifications. Each module, including the pump, detector and autosampler, has the same or better specifications than the North American market leaders



Contact our Instrumentation Team to discuss the system that best suits your needs.

1-888-593-5969 • biolynx.ca • tech@biolynx.ca

REAL TIME MASS DETECTION IN YOUR BIOPROCESS

Save time in manufacturing and the time to market for new biologics.

The MiD® ProteinID is the next generation of mass detector, providing real-time information about the small molecules and proteins in your bioprocessing workflows at the point-of-need. The detector is designed for multiple upstream and downstream scenarios. Using the MiD® ProteinID you can verify the health of your target protein on the fly, while simultaneously monitoring metabolite and feedstock information. This means the detector is an all in one Critical Quality Attribute and Critical Process Parameter measurement tool.



The MiD® ProteinID combines the mass spec, vacuum system, electronics, and computer inside one compact unit:

- Small footprint enables deployment anywhere within laboratory or processing facilities
- Suited for the analysis of biologics and metabolites
- Accurately ID target molecules, feedstocks and metabolites on the fly
- Simultaneously monitor and control your CQAs and CPPs
- Speed up time for process interventions, such as dosing and feeding strategies
- Low maintenance costs with completely tool-less front-end
- Single quadrupole with a mass range of 50 - 3200 m/z
- Integrated intuitive open-access Masscape® software designed for rapid set up and data analysis

The MiD® ProteinID can verify your target protein through the whole bioprocess from cell train to bioreactor to drug capture to drug formulation. Solving your mass identification needs in your bioprocess both upstream and downstream.

Fast, accurate, real-time mass data of the critical process parameters and critical quality attributes allows you to make decisions faster.



Scan QR Code to read more
on the MiD® ProteinID



Scan QR Code
for the Application Note

1-888-593-5969 • biolynx.ca • tech@biolynx.ca

LIPID NANOPARTICLES

From R&D to Production...

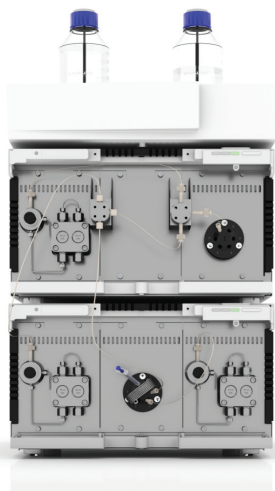
think **LNP** | think **KNAUER**



Lipid nanoparticles (LNPs) have shown to be the preferred delivery media for mRNA-based vaccines against the Corona virus. LNPs encapsulate and protect the delicate active ingredient and allow its transport to the target cells in the human body. Corona vaccines are the first large-scale use of mRNA and lipid nanoparticles in vaccination history.

KNAUER is world-renowned as a manufacturer of high-quality liquid chromatography systems. They have leveraged their expertise in high-pressure dosing, mixing and system engineering into the manufacture of production equipment for lipid nanoparticles.

KNAUER's Impingement Jets Mixing (IJM) technology has demonstrated precise and consistent performance for small and large-scale production of lipid nanoparticles. The encapsulation process of active pharmaceutical agents with lipids is based on impingement jets mixing technology, where two streams collide at high velocity in a jet mixing chamber. One of the streams contains the lipids in organic solvents and the other stream the active pharmaceutical ingredient (API) in water. The mixing at high velocity reduces the solubility of the lipids so that homogenous nanoparticles are formed.



IJM NanoScaler

The IJM NanoScaler contains 5 different impingement jet mixers, allowing researchers to determine the optimum encapsulation conditions before scaling up the process to run on a larger NanoProducer unit.

Each NanoScaler system contains three pumps. API solution is transferred via a loop to be mixed with the organic phase. Finally, the LNP mixture is quenched in a third mixer.

IJM DuoCore NanoProducer

Production systems are designed and optimized to meet customer's specifications and documentation requirements.

They are equipped with built-in software and all necessary interfaces for integration into the customer's own programmable logic controller (PLC) systems.

System installations in Class C clean rooms have been successfully carried out.

Production units are built on a stainless-steel frame with casters and are suitable for CIP cleaning procedures in pharmaceutical environments.



1-888-593-5969 • biolynx.ca • tech@biolynx.ca

Pyros Kinetic Flex

Fully compliant USP bacterial endotoxin testing system.



- An optical reader that runs both chromogenic and turbidimetric endotoxin assays
- Available in 3 configurations: 32, 64 or 96 positions
- Best sensitivity range in the industry with detection limits as low as 0.001 EU / mL
- Increased efficiency: easy-to-use software that provides quantitative results while the assay continues to run
- Flexible testing: variable volume and ratios can be used
- Reduced lysate usage: volumes as low as 50 μ L per analysis
- Independently timed wells: allows for more samples to be added for a continuous run
- 21 CFR part 11 compliant software with Oracle-based best-in-the-industry data security
- Precise temperature-controlled incubator: 37°C \pm 0.5°C
- Solid state design with LED light source for low maintenance
- Two wavelength settings: 405 nm and 660 nm
- Complete validation protocol is available



Scan QR Code
for more information

Laboratory Water Purification Systems

Water systems that conveniently, economically, and reliably deliver high purity reagent grade water for your laboratory.

AQUA SOLUTIONS offers modular systems that allow you to select the appropriate configuration for your laboratory's particular needs; the system is easily upgradeable should your needs change in the future. Depending on your lab / facility requirements, you may opt for a single large system to cover all lab needs, or smaller systems tailored to the exact requirements of each particular lab.

These systems are easy to install, operate and maintain, without complex service requirements, like weekly chemical sanitization, that can complicate maintenance, while costing you money and down-time.

- Type I, Type II & Type III Reagent Grade DI systems
- Reverse Osmosis pre-treatment systems
- Combination Reverse Osmosis plus Type I, Type II or Type III DI systems in a single cabinet
- Water deionization, UV sterilization / oxidation, TOC reduction, removal of pyrogens and endotoxins by filtration, and hydrogen generator pre-treatment
- Systems can deliver from 0.35 to 40 L/min.
- Replacement cartridges and accessories are available for other brands of systems
- Recirculating PTFE remote dispensers with 7 feet of tubing and a 0.2 micron final filter capsule is included with all Type I systems (longer dispenser lengths are available)
- Wide range of optional storage tanks



AQUA SOLUTIONS offers:

- 2-year warranty on all systems
- Complete installation packages for single or distributed outlets, customized to your needs



Contact us for a free consultation on your laboratory water needs.

MJS
BioLynx 

1-888-593-5969 • biolynx.ca • tech@biolynx.ca



Minux S700A Rotary Microtome

A Slice Above The Rest!

RWD's Minux S700A is a fully automated microtome with automatic, semi-automatic, and manual options that meet the different needs of microtommists. Four mechanized cutting modes produce high-quality sections across an extensive range of specimen types.

The unit features extraordinary ergonomic characteristics resulting in comfortable operation while maintaining reproducible precision.

Its unique side specimen knob and visual pointer design make specimen advance and retraction extremely precise.

A handwheel double lock system and knife ejector and guard enhance safety.

Precise

- Patented visual pointer orientation system provides accurate sample position and consistent angles
- Advanced technology allows high quality and precision sectioning
- Blade holder position is designed to provide high accuracy and improved slicing performance

Safe

- Handwheel designed with enhanced dual locking system
- Equipped with a knife ejector and guard so user can safely replace the sample and blade
- Emergency stop button

Intelligent

- Easy-to-use, stylish 5" touch screen interface
- Quickly problem solve with easy tracking information and historical record system
- Improve efficiency with advance position memory function

Convenient

- Ergonomically and comfortable knobs and controls
- Easy-to-clean, antistatic, removeable waste tray
- Simple, efficient, effortless half-knife repair function
- Semi-Automatic or Fully-Automatic Models



1-888-593-5969 • biolynx.ca • tech@biolynx.ca

C100 Automated Cell Counter



MJS
BioLynx

Technical Parameters

Amplification Factor	2.5X, 5 mega-pixel
Focus Method	Manual focusing & Autofocusing (less than 3s)
Counting Area	2.15mm x 1.62mm
Fluorescence Application	FL Cube-01 (DAPI), Ex:375/28nm; Em:460/50nm FL Cube-02 (AO/GFP), Ex:480/30nm; Em:535/40nm FL Cube-03 (PI/RFP), Ex:540/25nm; Em:620/60nm
Cell Type	Cell lines, stem cells, primary cells
Cell Size Range	4-60 μm (Optimal: 7-60 μm)
Cell Concentration Range	10^4 - 10^7 cells/mL
Cell Counting Time	Less than 9s
Historical Data Storage	1000 counting reports and images at most
Languages	Chinese and English
Dimensions (W x D x H)	212mm*165mm*264mm
Weight	~3.2kg

RWD Life Science Co., Ltd

www.rwdstco.com

1-888-593-5969 • biolynx.ca • tech@biolynx.ca

Micronic offers a complete line of sample storage tubes that fit in the 96-well, 48-well or 24-well ANSI/SLAS standard rack format. The comprehensive range includes tubes with volumes ranging from 0.30mL to 6.00mL. The tubes are available non-coded, alphanumeric coded or with a unique 2D Data-Matrix code.

 0.30mL TUBES EXTERNAL THREAD Working volume with Screw Cap (+21°C): 0.32mL (V-bottom) and 0.23mL (Vr-bottom).	 1.10mL TUBES EXTERNAL THREAD Excellent closure and horizontal placement of the cap to ensure long-term sample preservation and storage. Working volume (+21°C): 0.93mL with Screw Cap.	 2.00mL TUBES EXTERNAL THREAD HYBRID Guarantee sample traceability and provide a high working volume (1.95mL at +21°C with a Screw Cap) with a relatively low tube height.
 0.40mL TUBES EXTERNAL THREAD Efficient storage of low volumes of liquid samples. This tube has a massive working volume of 0.40mL (+21°C) with Screw Cap.	 1.40mL TUBES ROUND BOTTOM Proven to be an industry standard solution for many sample storage applications. Working volume (+21°C): 1.14mL with Push Cap.	 3.00mL TUBES EXTERNAL THREAD HYBRID (48-WELL FORMAT) ANSI/SLAS format racks, standard cryo boxes, automated stores and liquid handlers. Working volume (+21°C): 2.90mL with Screw Cap.
 0.50mL TUBES INTERNAL THREAD Save between 35% - 50% of your freezer space. Working volume (+21°C): 0.21mL with Screw Cap.	 1.40mL TUBES INTERNAL THREAD Provided with a code surface that cannot be separated from the tube. Working volume with Screw Cap (+21°C): 1.04mL (V-bottom) or 1.10mL (U-bottom).	 3.50mL TISSUE TUBES EXTERNAL THREAD The tubes can also be used for secure transportation. Working volume (+21°C): 3.35mL with Screw Cap.
 0.75mL TUBES INTERNAL THREAD The 0.75mL tubes enable you to store your valuable samples in a safe and traceable way. Available in a push cap and screw cap version.	 1.40mL TUBES EXTERNAL THREAD Cryogenic temperatures, the 1.40mL tubes with external thread have thick tube walls. Working volume (+21°C): 1.11mL with Screw Cap.	 3.00mL TUBES EXTERNAL THREAD HYBRID (24-WELL FORMAT) Tube walls enable visual checking, while the 4 different coding concepts guarantee sample traceability. Working volume (+21°C): 2.45mL with Screw Cap.
 0.75mL TUBES EXTERNAL THREAD The 0.75mL tubes with external thread are provided with a triple start thread. Working volume (+21°C): 0.60mL with Screw Cap.	 1.40mL TUBES EXTERNAL THREAD HYBRID The transparent tube walls enable easy visual checking, while the 4 coding concepts guarantee sample traceability. Working volume (+21°C): 1.20mL with Screw Cap.	 4.00mL TUBES INTERNAL THREAD Ideal for storing or transporting larger volumes of liquid or solid biological samples. Working volume (+21°C): 2.70mL with Screw Cap.
 0.75mL TUBES EXTERNAL THREAD HYBRID Automated and visual sample identification and guarantees the complete traceability of samples. Working volume (+21°C): 0.62mL with Screw Cap.	 1.50mL TUBES EXTERNAL THREAD HYBRID The tubes are ideal for storing fresh frozen tissue samples. Working volume (+21°C): 1.45mL with Screw Cap.	 4.00mL TUBES EXTERNAL THREAD Ideal for solid or large volumes of liquid samples. Working volume (+21°C): 3.40mL with Screw Cap.
 0.80mL TUBES EXTERNAL THREAD The 0.80mL tube offers you the best volume to height ratio in a 96-well format with a working volume(+21°C) of 0.75mL with a Screw Cap.	 2.00mL TUBES INTERNAL THREAD High sample storage capacity and absolute sample traceability in an industry standard 96-well configuration. Working volume (+21°C): 1.49mL with Screw Cap.	 6.00mL TUBES INTERNAL THREAD Large working volume of 4.80mL (+21°C) with Screw Cap. These tubes are available non-coded or with an unique 2D Data Matrix code.
 1.00mL TISSUE TUBES EXTERNAL THREAD Specially designed for the storage of your valuable fresh frozen tissue. Working volume (+21°C): 0.85mL with Screw Cap.	 2.00mL TUBES EXTERNAL THREAD High volume samples in a space-efficient 96-well format. Working volume (+21°C): 1.55mL with Screw Cap.	 6.00mL TUBES EXTERNAL THREAD HYBRID Guarantee absolute sample traceability with 4 coding concepts and optimize working volume (6.00mL at +21°C with Screw Cap).
 1.10mL TUBES INTERNAL THREAD Micronic work equally well with either screw caps or push caps. Working volume (+21°C): 0.80mL with Screw Cap.	 2.50mL TUBES ROUND BOTTOM Highest net working volume on 96-format: 2.50mL per individual tube (working volume at +21°C).	 TUBESTRIP-8 & TUBES FOR LIGHT SENSITIVE SAMPLES Storing up to 8 samples in a linked row and has a working volume (+21°C) of 1.20mL. The amber storage tube uniquely safeguards light sensitive sample.


Micronic Tube Wizard (Tube Configurator)

MICRONIC TUBE CONFIGURATOR

FIND YOUR IDEAL SAMPLE STORAGE TUBE

CHOOSE A VOLUME


☒ TUBE VOLUME
 ☐ RACK FORMAT
 ☐ THREAD TYPE
 ☐ TUBE CODING
 ☐ TUBE SIDE CODING
 ☐ TUBE BOTTOM



Less than 0.75ml




Between 0.75mL and 2.00mL



Bigger than 2.00ml

SAVE AND CONTINUE →



Micronic – 1D and 2D Code Readers

A complete range of code readers to enable fast, accurate and efficient sample identification.

Single Tube Readers

- Reads 1D barcodes of the tube and rack and 2D Matrix Codes in less than 1 second
- Compatible with 96-, 48- and 24-well rack and tube formats
- Plug and Play, no software installation required

Handheld Tube Readers

- Instantly reads 1D-Linear and 2D Data-Matrix Codes
- Compatible with all mobile devices with Bluetooth
- 10 hour battery life with continuous usage

Whole Rack Readers

- Includes anti-frost system
- Reads racked tubes in 7 seconds
- Easy-to-use software

Micronic readers come with a 5-year warranty and are compatible with most brands of 2D coded tubes and racks.



Scan for Video



Tube Reader DT510



Handheld Wireless Code Reader DT300



Scan for Video



Rack Reader DR710

Micronic – Electric Cappers

Improve productivity and minimize repetitive motion issues.

Push Cap Cappers

- Compatible with TPE Capmats, Capbands, Capclusters and EVA Capmats
- Seal an entire rack of 96 tubes within 12 seconds
- Controlled pressure system for even capping

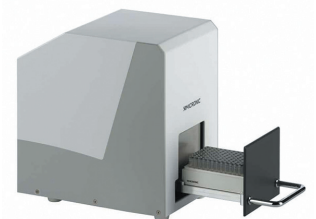
Screw Cap Recappers

- Each Screw Cap is tightened securely and uniformly
- CS500 Recapper caps a row of 8 tubes in 5 seconds and a whole rack of 96 tubes in only 1 minute
- SR096, SR048 and SR024 systems cap an entire rack in 30 seconds

Micronic electric cappers come with a 3-year warranty. They do not require adapters and can be integrated into automated systems and robotics.



Scan for Video



Push Cap Capper CP600



Scan for Video



Screw Cap Recapper CS500



Fast, Safe, Reproducible Laboratory Sample Thawing

BOX Scientific's ambient air convection based thawing platforms have become the new standard for procedural sample thawing.

From benchtop units to high capacity platforms, you can safely **reduce your thawing time by up to 75%** without making any compromise.

Station One The first of its kind!

Thaw Right!

The Station One thaws frozen reagents and samples in a fraction of the time using only ambient air. Its fixed platform enables high throughput sample thawing that is repeatable, proceduralizable, and safe for even the most delicate samples and reagents.

The Station One channels ambient air over and around samples. The result is up to a 75% decrease in sample and reagent thawing times without any application of heat. Included accessory racks enable thawing of most industry standard tubes from 1 to 50mL.

The Station One's large thawing surface can accommodate two microplates or 2D barcoded tube racks at a time. There's ample surface area for thawing media bottles too.

The Station One unit has a compact footprint and consumes minimal power.

What is the cost of your time?

BOX Scientific's thaw stations can save you time and money while assuring you consistent inputs into your manual and automated laboratory processes. Microplates, tubes and even 2D barcoded tube racks can be ready for use in a fraction of the time. Their surface capacity and interchangeable racks provide you maximum speed and flexibility. There is no single product on the market that can offer all of this.

Achieve Equilibrium with the BOX Station One, Heliport and Heliport Plus!

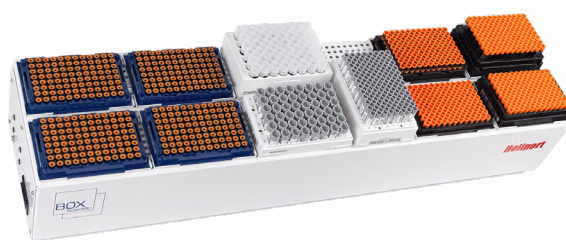


Heliport



- High uniformity, high reproducibility
- No calibration or maintenance required
- Rapidly thaws samples to equilibrium with the working environment
- Seven Jumbo Fans deliver a continuous 315 CFM ambient air current
- Accommodates up to 11 SBS footprint positions, custom configured in portrait or landscape orientation
- Suitable for benchtop use or plug-and-play integration with most automated systems

Heliport Plus



The Heliport Plus has the same deck size as the Heliport but with the added feature of a 600 watt heating system that can be turned on to thaw large molecule compounds and high melt carriers such as DMSO. In addition, it's combined with 7 upgraded fans that deliver 6L/min. of 30°C air at 2 meters per second. The heater can be turned off when not needed for other compounds and will perform the same as the basic Heliport.

AUTOMATIC TUBE LABELER

TubeWriter 360™ is a high-speed inkjet unit that prints directly on vials, tubes and other labware to eliminate the cumbersome and time-consuming application of adhesive labels or messy handwriting.



TUBEWRITER

3 6 0

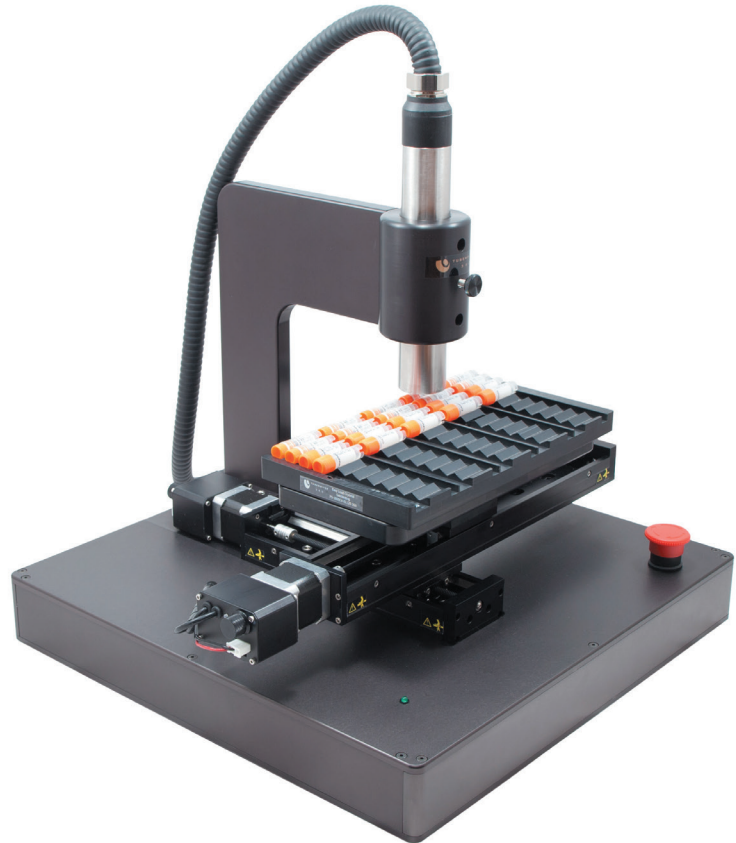
Tradition of Innovation

TubeWriter 360™ expands on the TubeWriter product line by employing a high-speed ink-delivery system used in over a quarter of a million systems world-wide. The inkjet technology has been designed to withstand harsh industrial conditions.

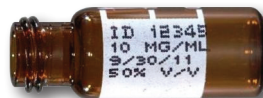
Continuous inkjet technology brings higher speed and higher resolution to the analytical laboratory. Barcodes, graphics and smaller more legible fonts are all now possible on your tubes and glassware.

The Fastest Direct Printer for Labware

- Proven assembly-line technology for the lab bench
- High-speed – Up to 2,500 tubes / hour
- Any labware – Autosampler vials, microcentrifuge tubes, screw cap tubes, conical tubes, snap cap tubes, cluster tubes, cryogenic vials, histology cassettes, slides and microplates.
- Scannable barcode printing on demand (e.g., 2D Data Matrix, Code 128, etc.)
- Excel Interface or LIMS Integration
- Graphics include logos, warning symbols, manufacturing marks and more
- Size and Weight:
 - Printing Unit: 18" x 18" x 16", 50lbs
 - Inkjet Cabinet: 13.6" x 11.2" x 21.3", 49lbs



Print on Any Labware!



Watch the TubeWriter™ 360
in action

Who Can Benefit from TubeWriter 360™?

- QA / QC labs where every sample must be tracked and positively identified
- High-volume clinical reference and testing labs
- Reagent manufacturers. Protects identification in dry ice and eliminates use of adhesive labels.
- Pharmaceutical companies looking to reduce time-to-market on drug discovery
- Cell banks storing cryovials exposed to liquid nitrogen and -80°C
- Tube manufacturers needing flexible printing solutions for custom runs

1-888-593-5969 • *biolynx.ca* • *tech@biolynx.ca*



Scan the QR Code
to view the Catalogue

Bench Top Equipment



1-888-593-5969 • biolynx.ca • tech@biolynx.ca

- Controls temperature, speed, and mixing intervals
- Heats to 99°C or cools 13°C below room temperature
- Digital display provides precise control
- Short mix button for quick, instant mixing
- Program two consecutive, different runs when samples require special care

Stop trusting your valuable samples to water baths. The Mixer HC offers precise heating, cooling, and thawing without the risk of water-born contaminants. Increase your reproducibility for better yields and more consistent results. Mixing speed is block dependent: 300-1400rpm for 1.5 mL tubes, 2.0 mL tubes, cryogenic tubes, and plates weighing 200 grams or less; 300-1500 for 0.5 mL tubes; and 300-750 for 5 mL, 15 mL, and 50 mL tubes. Blocks for microcentrifuge tubes include a polycarbonate rack for quick transfer of all 24 tubes at once.

Two special functions provide additional options for specific applications:

- Interval mixing: Continuously alternates between mixing and stationary periods where the mixing frequency and the duration of the mixing and pause functions can be freely selected.
- Program mode: In addition to a normal mixing/temperature control run, two combined, consecutive mixing/temperature control runs can be programmed. When the first run is completed, the second run will switch on automatically, allowing two different conditions to be applied to the same liquid.

Specifications

Mixing Speed	300-1500 rpm (block dependent)
Orbit Diameter	3 mm
Heating Rate	Approx. 5°C/min.
Cooling Rate (above room temp)	2 to 3°C/min.
Cooling Rate (below room temp)	0.5 to 1.0°C/min.
Ambient Temperature	4 to 35°C
Relative Humidity	70% max.
Dimensions (W x D x H)	220 x 250 x 125 mm
Weight Base Unit	7 lb (3.2 kg)
Mains Connection	100 to 240V, 50 to 60 Hz
Power Consumption	90W

MixerHC



Blocks are available for a variety of tubes and multiwell plates.



Scan QR code to watch a demonstration.

Applications

cDNA synthesis

Enzyme reactions (restriction digest, ligation, proteinase-K-digestion)

Denaturation of DNA, RNA, or proteins

Labeling of DNA, RNA, or proteins

Cultivation of bacteria in microcentrifuge tubes, centrifuge tubes and deep well plates

Transformation of bacteria and plasmids

Resuspension of pellets

SURFACE PLASMON RESONANCE (SPR)

Versatile SPR instruments for a wide range of applications, including:

- **Environment and Food:** Trace metal analysis, hazardous residue screening, sensor development
- **Life Sciences:** Protein, DNA, drug interactions, gene assays, drug development
- **Electrochemical Measurements:** Anodic stripping analysis, electropolymerization, redox-and charge-related processes
- **Chemical Vapor Sensing:** Fundamental solid-gas interface studies, detection of toxic molecules



BI-4500 Series

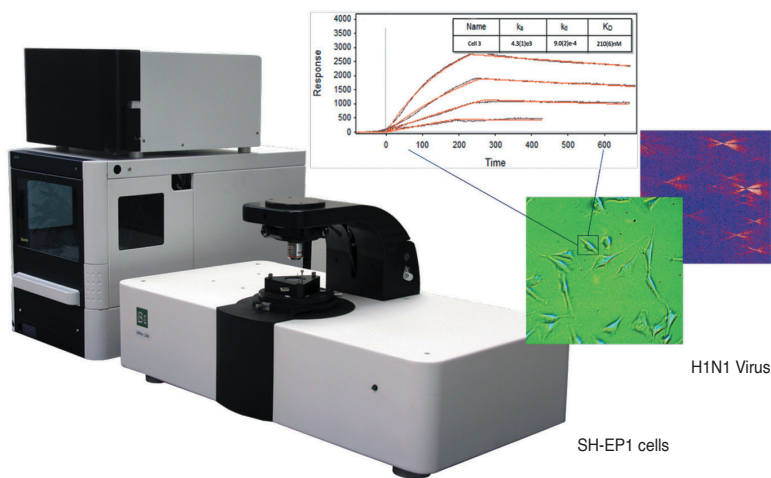
- High throughput with 5 channels and a fully automated 384-well plate autosampler
- High sensitivity for detection of small molecules (< 100 Daltons)
- BI-DirectFlow™ Technology delivers samples to the sensor surface with near-zero dispersion
- Temperature control for thermodynamic studies, 6°C to 50°C
- Innovative multi-module design provides users with maximum flexibility
- Switch between various analysis modules for electrochemistry and liquid applications



SPRM 200 Series SPR Microscopy System

Integrated optical microscopy with SPR measurements in one instrument.

- Large field of view with high resolution optics to view single or multiple cells
- In vitro, label-free molecular binding activity measurements
- Provides SPR sensorgrams and binding activity map of individual cells as well as the binding kinetic constants (k_a , k_d , K_D)
- Nanoscale monitoring of bacteria or virus metabolic or binding activity for studying nanoparticle drug delivery



Scan QR code
for more information

NEST[®]



*We have your
cell culture labware covered!*

*Scan the QR Code
to view the full
NEST Biotechnology Catalogue.*

1-888-593-5969 • biolynx.ca • tech@biolynx.ca



T210 2D Cryovial[®]

2D Datamatrix Barcoded Cryogenic Vials

2 ml externally threaded



Features and Benefits:

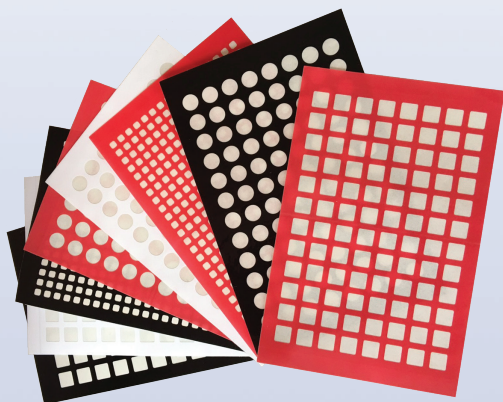
- Sterilized to 10⁶ by gamma radiation
- Unique laser etched 2D datamatrix barcode
- Human readable characters
- Every barcode is pre-scanned: guaranteed unique codes and no global duplicity
- High contrast: white on black background allows excellent readability even in harsh conditions
- Standard size 81-place cryostorage boxes: Utilize current freezer racking systems

www.simport.com

1-888-593-5969 • biolynx.ca • tech@biolynx.ca

MicronPlus sealing films and mats provide **adhesive-free areas that are not in contact with the well contents when sealing a plate.**

They also do not require the use of a heat sealer.



MicronPlus is the patent holder and manufacturer of innovative life science products. MicronPlus introduces alternative sealing products for microplates that overcome many drawbacks of commercially available sealing films and mats. This process is achieved by the application of pattern adhesive technology, which provides adhesive-free areas that are not in contact with the well contents when sealing films and mats adhere to a plate.

MicronPlus Pattern Adhesive Technology enables researchers to have an option of choosing their optimum barrier film, adhesive, and design that fits their specific microplate sealing needs. MicronPlus products have the features that make them ideal covers for microplates and vials.

Optical Clarity, Pierceability, Chemical Resistance, and RNase-DNase Free.

Product Categories:

- PTFE sealing films 96-well round, square, pre-slit, 384-well square and pre-slit
- Silicone sealing mats, 96-well round, square, 384-well square and individual patches available
- Automation solutions
- Custom designs available



Pattern Adhesive PTFE Sealing Film (Patented): No Heat Sealer Required

**Pattern Adhesive PTFE Sealing Film (Patented):
Sealing Solution for All Applications, Optically Clear,
Adhesive-Free Well Coverage**

- Outstanding performance with Auto samplers
- Only 0.5 lb force needed to pierce
- No coring of material
- No clogging of needles
- Designed for short term and long term sample storage from -20°C to -80°C
- Excellent performance for PCR applications, 40 cycles, hot lid at 100°C
- User friendly design – Perfect alignment each time
- No cross-contamination or evaporation

Also available in silicone and roll format. Please inquire.

MJS BioLynx is proud to represent the following companies in Canada ...

Cell & Molecular Biology

- Crystallography
- Immunohistochemistry
- Immunofluorescence
- Glycobiology
- Transfection & Electroporation
- 3D Cell Co-culture
- 3D Laboratory Services
- Density Gradient Media
- Cell Culture Media
- Cell Migration Assays
- DNA / RNA Exosome Purification
- PCR, qPCR & PCR Clean Up Reagents



Antibodies and Proteins

- Enzymes & Antibodies
- Nucleosomes & Histones (Epigenetics)
- Lipids and Fatty Acids
- Recombinant Proteins
- ELISAs
- Protein Expression Reagents
- Cytokines



Labware & Equipment

- Pipette Tips
- Semi Automated Pipettors
- Freezer Racks
- Tubes
- Histology Labware
- Sample Collection and Management
- Sample Storage
- Microwell Plates
- Water Purification Systems
- Benchtop Equipment
- SPR
- Tube Labeling and Thawing
- qPCR



Microbiology

- Endotoxin Testing
- Yeast Growth Media
- Microscope Slides, Stains and Accessories
- Sterilization Products



+ More

- Detergents
- Protein Purification & Assay Reagents
- Chromatography



Please visit our website at www.biolynx.ca if you would like to be added to our mailing list.
1-888-593-5969 • biolynx.ca • tech@biolynx.ca