



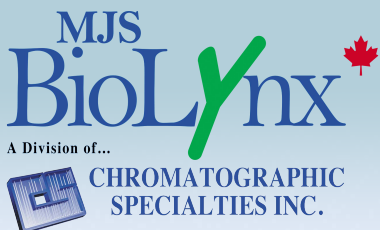
CRYSTAL TECHNOLOGY & INDUSTRIES, INC.

Benchtop Equipment



2025 Benchtop Solutions

Available in Canada at ...



1-888-593-5969

biolynx.ca • tech@biolynx.ca



BRINGING SCIENCE AND TECHNOLOGY TO LIFE!

For over 25 years, Crystal Technology & Industries has been driven to deliver more value to the global scientific community. Our team of over 40 engineers collaborate closely with top tier research institutions worldwide to design and develop products with application specific features that provide the scientist with the more innovative solutions.

This catalog of Crystal Benchtop Equipment has expanded to over 60 products to serve today's scientists. All of our products undergo extensive testing to ensure superior quality. That is why every piece of Benchtop Equipment from Crystal Industries comes with our industry leading 2 Year Replacement Warranty.

Our presence is global with dedicated offices/warehouses in North America, Europe & Asia. Our goal is total customer satisfaction felt locally. We look forward to serving the scientific community today and in the future.



Table of Contents

Tube Revolvers	4
Tube Rotators	5
High Capacity Tube Rotator	6
Vortex Mixers	7
Mini Vortex Mixers	8
Stackable Tube/Bottle Rollers	9
2D Platform Rockers	10
Nutating Mixers	11
Orbital Shakers	12
Benchtop Incubator Shaker	14
Mini Centrifuges	15
Benchtop Mini Centrifuge	16
Magnetic Stirrers	17
Hot Plate Stirrers	19
MultiPosition HotPlate Stirrers	20
MultiPosition Magnetic Stirrers	21
Mini Water Bath	22
Digital Dry Baths	23
Handheld UV Lamps	25
Microincinerators	26
Stainless Steel Dewar Flasks	27

Benchtop Equipment from Crystal Industries:

- Easy to Use
- Unique Features
- Most models include accessories
- 2-Year Replacement Warranty on all models



Benchtop Equipment

Tube Revolvers

Powerful Tube Revolvers with 5 interchangeable rotisseries to accommodate a variety of tube sizes.

Fixed Speed Tube Revolver



Model: TR-01A

Speed	25rpm
Capacity	84 x 0.5/0.8mL / 60 x 1.5/2.0mL / 28 x 5/7mL 28 x 10/15mL / 6 x 50mL Tubes
Environment	4°C - 60°C / Humidity <80%
Max Power	4W

Included Accessories: 5 Interchangeable Rotisseries

Variable Speed Tube Revolver



Model: TR-02UA

Speed	10-40rpm
Capacity	84 x 0.5/0.8mL / 60 x 1.5/2.0mL / 28 x 5/7mL 28 x 10/15mL / 6 x 50mL Tubes
Display	LED
Environment	4°C - 60°C / Humidity <80%
Max Power	4W

Included Accessories: 5 Interchangeable Rotisseries

Accessories



TRA01	Holds 7 x 10mL/15mL Tubes - pk2
TRA02	Holds 7 x 5mL/7mL Tubes - pk2
TRA03	Holds 15 x 1.5mL/2.0mL Tubes - pk2
TRA04	Holds 21 x 0.5mL/0.8mL Tubes - pk 2
TRA05	Holds 6 x 50mL Tubes
TRA06	Magnetic Bag Platform, Holds 1 Bag

Tube Rotators

Tube Rotators are ideal for applications requiring highly efficient and consistent mixing.

Fixed Speed Tube Rotator



Model: TR-03A

Speed	24rpm
Title Angle	90° - 180° (any angle in range)
Carousel Diameter	250mm (9.8in)
Capacity	12 x 50mL / 18 x 15mL / 48 x 2mL / 9 x 50mL / 9 x 50mL+9 x 15mL+12 x 2mL
Environment	4°C - 40°C / Humidity <80%
Max Power	11W

Included Accessories: TRA22 (Carousel for 12 x 50mL Tubes)

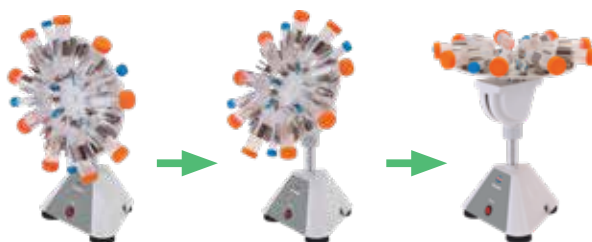
Digital Tube Rotator



Model: TR-04UA

Speed	2-80rpm
Title Angle	90° - 180° (any angle in range)
Carousel Diameter	250mm (9.8in)
Capacity	12 x 50mL / 18 x 15mL / 48 x 2mL / 9 x 50mL / 9 x 50mL+9 x 15mL+12 x 2mL
Environment	4°C - 40°C / Humidity <80%
Display	LCD
Max Power	6W

Included Accessories: TRA22 (Carousel for 12 x 50mL Tubes)



0~90° Angle Adjustable

Accessories



TRA19

Carousel holds 12 x 2mL, 19 x 5mL and 9 x 50mL Tubes



TRA20

Carousel holds 48 x 2mL Tubes



TRA21

Carousel holds 18 x 15mL Tubes



TRA22

Carousel holds 12 x 50mL Tubes



TRA15

Tube Holder for 50mL Tubes



TRA16

Tube Holder for 5mL/10mL/15mL/20mL Tubes



TRA17

Tube Holder for 2mL Tubes

Benchtop Equipment

High Capacity Tube Rotator



Model: TR-05UA

Speed	5-80rpm
Title Angle	95°- 180°(Six Steps: 95°, 112°, 129°, 146°, 163°, 180°)
Carousel Diameter	290mm (11.4in)
Capacity	15 x 50mL / 30 x 15mL / 10 x 10mL/15mL +20 x 5mL/7mL/ 64 x 18.5mm Culture Tubes/64 x 14mm Culture Tubes
Display	LED
Environment	4°C - 40°C / Humidity <80%
Max Power	8W



Included Accessories: TRA25 (Carousel for 15 x 50mL Tubes)

Accessories



TRA23
Carousel holds
50 x 1.5mL/2.0mL Tubes



TRA24
Carousel holds
30 x 15mL Tubes



TRA25
Carousel holds
15 x 50mL Tubes



TRA15
Tube Holder
for 50mL Tubes



TRA16
Tube Holder for
5mL/10mL/15mL/20mL Tubes



TRA26
Carousel holds
10 x 10mL/15mL+
20 x 5mL/7mL Tubes



TRA27
Drum holds
64 x 14mm Culture Tubes



TRA28
Drum holds
64 x 18.5mm Culture Tubes



TRA17
Tube Holder for
2mL Tubes

Vortex Mixers

Powerful, quiet and stable Vortex Mixers for a variety of mixing applications, featuring touch control, timed runs and continuous run modes.

Digital Timer and Analog Speed



Model: VM-01UA

Orbit	4.5mm
Speed Range	0~3000rpm
Single Tube Head Dimensions	76mm
Max Load	0.5kg
Environment	5°C - 40°C / Humidity <80%
Max Power	11W

Included Accessories: VMA01 Single Tube Head

Vortex Mixer with Digital Timer and Speed



Model: VM-02UA

Orbit	4.5mm
Speed Range	200~3000rpm
Single Tube Head Dimensions	76mm
Max Load	0.5kg
Environment	5°C - 40°C / Humidity <80%
Max Power	24W

Included Accessories: VMA01 Single Tube Head

Accessories



VMA01
Single Tube Head



VMA02
Adapter for use with VMA04
and VMA05



VMA03
Adapter for use with VMA07,
VMA08 and VMA09



VMA04
Holder 7 x 12mm Tubes
(need VMA02)



VMA05
Customizable Tube Blank
Head (need VMA02)



VMA06
Microplate Holder



VMA07
Elisa Plate Holder
(need VMA03)



VMA08
Combo Tube Holder,
1.5mL/2.0mL/
5mL/7mL/10mL/15mL (need
VMA03)



VMA09
PCR Tube Holder
(need VMA07)

Benchtop Equipment

Mini Vortex Mixers

Your everyday, personal Vortex Mixer, compact, colorful and powerful with 3,000rpm mixing speed for tubes up to 80mL.



Model: VM-03UA

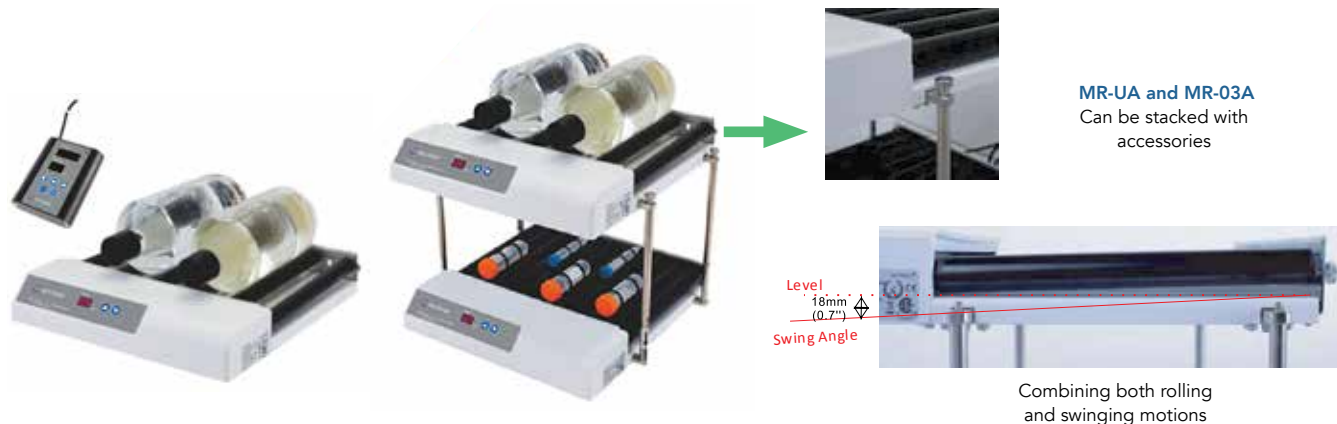
Orbit	4.5mm
Max. Capacity	80mL (1 Tube)
Max. Tube Diameter	30mm
Speed	3000rpm
Environment	5°C - 40°C / Humidity <80%
Max Power	5W

Colors

VM-03UA	Blue
VM-03RUA	Red
VM-03GUA	Green
VM-03PUA	Purple

Stackable Tube/Bottle Rollers

Compact, Stackable Incubator safe Rollers with Remote Control.



Model: MR-01UA Stackable Roller

No. of Roller Bars	6 Standard Up to 11 Max rollers optional
Roller Speed	0.5~80rpm
Roller Dimension (DXL)	28 x 269mm
Dimension (W x D x H)	378 x 360 x 72mm
Max Tube/Bottle Diameter	120mm (4.72in)
Timer Range	0~999min or Continuous
Max Load	6.5kg (Incl. Container)
Environment	5°C - 60°C / Humidity <95%/ CO2 5%
Stackable	Yes
Power	10w

Included Accessories: MRA02, MRA03 and MRA05

Model: MR-03UA 3D Swing Angle Roller

No. of Roller Bars	11
Roller Speed	0.5~80rpm
Roller Dimension (DXL)	28 x 269mm
Dimension (W x D x H)	378 x 360 x 72mm
Swing Dimension	18mm (0.71in)
Max Tube/Bottle Diameter	120mm (4.72in)
Timer Range	0~999min or Continuous
Max Load	6.5kg (14.33lb) 3 x 1500mL Bottles
Environment	5°C - 60°C / Humidity <95% / CO2 5%
Stackable	Yes
Power	10w

Included Accessories: MRA02, MRA03 and MRA05

Accessories



MRA01
Fixed Angle Roller - pk2



MRA02
O-Rings for
50mL Tubes - pk20



MRA03
O-Rings for
15mL Tubes - pk20



MRA04
Bars for Stacking
- pk4



MRA05
Remote Control



MRA07
3D Swing Angle
Roller - pk2

Benchtop Equipment

2D Platform Rockers

Designed for gentle mixing of solutions and reagents, ideal for blotting and staining applications, featuring compact size, robust construction and quiet operation.



Model: NS-14UA Large Capacity Rocker

(High Profile 2D Rocker w / adjustable time, speed and angle)

Speed Range	1~50rpm
Speed Accuracy	1rpm
Title Angle	1~15° (adjustable in 1°increments) Max.
Environment	5°C - 40°C / Humidity <80%
Max Load	4.5kg
Timer Range	0~9999min
Platform Dimensions	307 x 267mm
Dimension (W x D x H)	440 x 296 x 209mm

Included Accessories: NSA01 Rubber Strips pk 6 and NSA02 Dimple Rubber Mat



Model: NS-04A 2D Fixed Speed Rocker

Speed	24rpm
Speed Accuracy	1rpm
Title Angle	±10°
Max Load	2kg
Environment	5°C - 40°C / Humidity <80%
Power	4W
Platform Dimensions	307 x 267mm
Dimension (W x D x H)	380 x 290 x 150mm

Included Accessories: NSA01 Rubber Strips pk 6 and NSA02 Dimple Rubber Mat



Model: NS-05UA

(2D Rocker, w / adjustable Speed and Time)

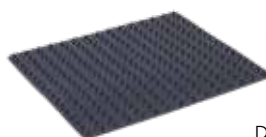
Speed Range	2~80rpm
Speed Accuracy	1rpm
Title Angle	±10°
Max Load	2kg
Environment	5°C - 40°C / Humidity <80%
Timer Range	0~99h 59min
Platform Dimensions	307 x 267mm
Dimension (W x D x H)	380 x 290 x 150mm

Included Accessories: NSA01 Rubber Strips pk 6 and NSA02 Dimple Rubber Mat

Accessories



NSA01
Rubber Strips for Securing
Tubes etc, to Platform pk6



NSA02
Dimpled Rubber Mat



NSA04
Stacking Platform
Assembly

Nutating Mixers

Nutating Mixers are designed for sample mixing combining the motions of an Orbital Shaker and 2D Rocker ideal for any application requiring through sample mixing.

20°



Model: NS-10UA Fixed Speed Nutating Mixer

Speed	24rpm
Speed Accuracy	1rpm
Title Angle	20°
Environment	5°C - 40°C / Humidity <80%
Max Load	0.8kg
Platform Dimensions	307 x 267mm
Dimension (W x D x H)	440 x 296 x 261mm
<i>Included Accessories: NSA01 Rubber Strips pk 6 and NSA02 Dimple Rubber Mat</i>	

20°



Model: NS-11UA

Speed	2~60rpm
Speed Accuracy	1rpm
Title Angle	20°
Environment	5°C - 40°C / Humidity <80%
Max Load	0.8kg
Timer Range	0~99h 59min
Platform Dimensions	307 x 267mm
Dimension (W x D x H)	440 x 296 x 255mm
<i>Included Accessories: NSA01 Rubber Strips pk 6 and NSA02 Dimple Rubber Mat</i>	

7°



Model: NS-12UA

Speed	2~80rpm
Speed Accuracy	1rpm
Title Angle	7°
Environment	5°C - 40°C / Humidity <80%
Max Load	0.8kg
Timer Range	0~99h 59min
Platform Dimensions	307 x 267mm
Dimension (W x D x H)	440 x 296 x 189mm
<i>Included Accessories: NSA01 Rubber Strips pk 6 and NSA02 Dimple Rubber Mat</i>	

7°



Model: NS-13UA Multi Modes Nutating Mixer

Speed	5~100rpm
Swing Angle	0~360°
Vibrating Angle	0~5°
Title Angle	7°
Environment	5°C - 40°C / Humidity <80%
Max Load	1kg
Orbit	23mm
Platform Dimensions	307 x 267mm
Dimension (W x D x H)	440 x 296 x 226mm
<i>Included Accessories: NSA01 Rubber Strips pk 6 and NSA02 Dimple Rubber Mat</i>	

20°



Model: NS-01A Fixed Speed 3D Nutating Shaker

Speed	24rpm
Title Angle	20°
Environment	5°C - 40°C / Humidity <80%
Max Load	0.8kg
Power	20W
Platform Dimensions	260 x 260mm
Dimension (W x D x H)	260 x 260 x 190mm

Accessories



NSA01
Rubber Strips for Securing
Tubes etc, to Platform pk6



NSA02
Dimpled Rubber Mat



NSA04
Stacking Platform
Assembly

Orbital Shakers

Perfect for culturing microbes, washing blots and general mixing.



Model: SYC-2102A High Capacity Orbital Shaker

Orbit	26mm (1in)
Speed Range	30-300rpm
Max Load	10kg
Capacity	36 x 50mL/24 x 100mL / 17 x 150mL/200mL/250mL/ 12 x 500mL/6 x 1L/4 x 2L / 4 x 3L / 2 x 5L
Timer Range	0~99h 59 min
Environment	5°C - 40°C / Humidity <80%
Max. Power	85W
Timer Range	0~99h 59 min
Display	LED
Platform Dimensions	400 x 400mm
Dimension (W x D x H)	432 x 535 x 190mm

Included Accessories: standard platform with non-skid mat

Model: OS-03UA Mini Orbital Shaker

Orbit	20mm
Speed Range	30~300rpm
Max Load	2.5kg
Capacity	15 x 50mL/12 x 100mL / 9 x 150mL/200mL/250mL/ 6 x 500mL/4 x 1L
Timer Range	0~99h 59 min
Environment	5°C - 40°C / Humidity <80%
Max. Power	8.5W
Timer Range	0~99h 59 min
Display	LCD
Platform Dimensions	307 x 267mm
Dimension (W x D x H)	345 x 240 x 111mm

Included Accessories: OSA13 Aluminum Platform

Model: OS-05UA Adjustable Rocker/Shaker

Speed Range	5~120rpm
Max Load	9.8kg
Title Angle	0~12°
Timer Range	0~99h59min
Environment	5°C - 40°C / Humidity <80%
Timer Range	0~99h 59 min
Display	LED
Platform Dimensions	307 x 267mm
Dimension (W x D x H)	440 x 296 x 218mm

Included Accessories: NSA01 Rubber Strips pk6, NSA02 Dimpled Rubber Mat and OSA34 pk2

Orbital Shakers



Model: OS-06UA Multi Purpose Orbital Shaker

Speed Range	5~450rpm
Max Load	4.5kg
Capacity	20 x 50mL/8 x 100mL x 17 x 150mL/200mL/250mL/ 6 x 500mL/4 x 1L/2 x 2L / 1 x 5L
Speed Accuracy	±1rpm (@≤100rpm) / ±1% (@>100rpm)
Orbital Diameter	10mm
Timer Range	0~99h 59 min
Environment	5°C - 40°C / Humidity <80%
Display	LED
Platform Dimensions	310x284mm
Dimension (W x D x H)	440 x 296 x 129mm

Included Accessories: OSA21 Universal Platform



Model: OS-07UA Microplate Orbital Shaker

Speed Range	150~1000rpm
Max Load	4kg
Capacity	4 x Microplates/ 6 x Microplates with OSA15 Large Platform Assembly
Speed Accuracy	±1% (@≤299rpm) / ±2% (@>299rpm)
Orbital Diameter	2.5mm
Timer Range	0~99h 59 min
Environment	5°C - 40°C / Humidity <80%
Display	LED
Platform Dimensions	275 x 235mm
Dimension (W x D x H)	440 x 296 x 142mm

Included Accessories: Standard Platform with OSA13 pk6

Accessories



OSA01
Aluminum Platform for SYC-2102A



OSA02
Platform with 4 Adjustable Bars for SYC-2102A



OSA03
Platform with 2 Adjustable Bars for large flasks for SYC-2102A



OSA04
400mm Bars for Universal Platform for OSA02 and OSA03



OSA13
96-Well Microplate Holder



OSA14
Large Platform for OS-07US (298x274mm)



OSA15
Large Platform with 96 Well Microplate Holders for OS-07UA



OSA20
Platform with Adjustable Bars for OS-06UA



OSA21
Universal Platform for OS-06UA (310x284mm)



OSA23
Aluminum Platform for OS-03UA (290x230mm)



OSA34
Small Wave Tube for OS-5UA

Benchtop Equipment

Benchtop Incubator Shaker

Compact size Incubator Shaker with advanced features, a slide out platform, timer, and tempered glass door.



Model: IS-RSDDA Benchtop Incubator Shaker

Speed Range	0rpm, 30~300rpm
Orbit Diameter	26mm
Speed Accuracy	1rpm
Max. Capacity	Flask Clamps: 28 x 50mL / 16 x 100mL / 12 x 150mL / 9 x 200mL / 9 x 250mL / 6 X 500mL / 4 x 1L Sticky Mat: 28 x 50mL / 20 x 100mL / 15 x 150mL / 14 x 200mL / 12 x 250mL / 8 x 500mL / 5 x 1L
Max Load	10 kg
Environment	5°C - 40°C / Humidity <80%
Temperature Range	Ambient +5° - 80°C
Timer Range	0-999hr
Display	LED
Platform Dimensions	350 x 300mma
Dimension (W x D x H)	440 x 535 x 550mm
Door Open Direction	Rightward

Accessories



Test Tube Racks,
various sizes



Flask Clamps, sizes
25mL – 1L



IS-A19
Universal
Mini Universal Spring
Platform



IS-A34 **IS-A33**
Infusion Bottle
Clamps



IS-A47
Sticky Mat
140 x 140mm



IS-A37
Adjustable Test
Tube Rack



IS-A13
96 Well Microplate
Holder



IS-A27
Mini Universal
Spring Platform



IS-A34
Fixture for
Separating Funnel



Adjustable Tube Racks, various
sizes

Mini Centrifuges

Personal Centrifuges ideal for quick spins, micro-filtration of samples, cell separations and other routine lab procedures. Unit stops when lid is opened.



Model: MLX-304A

Speed	4000rpm
Rel. G-force	900g
Environment	5°C - 40°C / Humidity <80%
Capacity	6 x 1.5mL/ 6 x 0.5mL/ 16 x 0.2mL
Dimension (W x D x H)	155 x 140 x 115mm
Color	Purple

Included Accessories: Rotor Heads MLX-7 and MLX-3/Adaptors MLXF-1 and MLXF-2



Model: MLX-306A

Speed	6000rpm
Rel. G-force	2000g
Environment	5°C - 40°C / Humidity <80%
Capacity	6 x 1.5mL/ 6 x 0.5mL/ 16 x 0.2mL
Dimension (W x D x H)	155 x 140 x 115mm
Color	White

Included Accessories: Rotor Heads MLX-7 and MLX-3/Adaptors MLXF-1 and MLXF-2



Model: MLX-310A

Speed	10,000rpm
Rel. G-force	5000g
Environment	5°C - 40°C / Humidity <80%
Capacity	6 x 1.5mL/ 6 x 0.5mL/ 16 x 0.2mL
Dimension (W x D x H)	155 x 140 x 115mm
Color	Grey

Included Accessories: Rotor Heads MLX-7 and MLX-3/Adaptors MLXF-1 and MLXF-2

Accessories



MLXF-1
0.5mL Tube Adapter



MLXF-2
0.2mL Tube Adapter



MLXF-3
0.2mL Tube Strip Rotor



MLXF-7
1.5mL Standard Rotor

Benchtop Equipment

Benchtop Mini Centrifuge

Large Centrifuge features in a compact footprint. Ideal for quick spin downs of HPLC samples and cell separations with 2 operating speeds and Timed, Continuous and Quick Spin Modes. Fun colorful LED lights alert user when run complete. Unit stops when lid is opened.



Model: MLX-200FA

Speed Range	6000-9200rpm
Max. Power	40W
Capacity	8 x 1.5mL/2.0mL/ 8 x 0.5mL with supplied adaptors/ 2 x 0.2mL Tube Strips or 16 x 0.2mL Tubes/ 4 x 5mL Tubes
Environment	5°C - 40°C / Humidity <80%
Dimension (W x D x H)	240 x 187 x 139mm

Included Accessories: Rotor Heads MLX-4, MLX-5 and MLX-6/Adaptors MLXF-1

Accessories



MLXF-1
Adaptors for 0.5mL
Tubes pk 8



MLXF-4
Rotor Head for 1.5mL/2.0mL
Tubes



MLXF-5
Rotor Head for 5mL Tubes



MLXF-6
Rotor Head for 8-Strip 0.2mL
PCR Tubes

Magnetic Stirrers

Essential instruments for every Laboratory for Mixing Solutions.



Model: MS-01FUA Low Profile Magnetic Stirrer

Speed Range	5~1500rpm
Max. Stirring Capacity	500mL
Max. Stir Bar Length	≤30mm
Max Load	2kg
Environment	5°C - 40°C / Humidity <80%
Power	6W
Platform Dimensions	110 x 110mm
Dimension (W x D x H)	175 x 120 x 20.5mm
Platform Material	ABS Plastic

Included Accessories: MSA05



Model: MS-01UA LED Display Stirrer

Speed Range	80~2000rpm
Max. Stirring Capacity	2000mL
Max. Stir Bar Length	≤50mm
Max Load	5kg
Environment	5°C - 40°C / Humidity <80%
Display	LED
Power	24W
Platform Dimensions	140 x 140mm
Dimension (W x D x H)	160 x 200 x 48mm
Platform Material	ABS Plastic

Included Accessories: MSA04



Model: MS-01TUA Touch Screen Stirrer

Speed Range	80~2000rpm
Max. Stirring Capacity	2000mL
Max. Stir Bar Length	≤50mm
Max Load	5kg
Environment	5°C - 40°C / Humidity <80%
Display	LCD Touch Screen
Power	24W
Platform Dimensions	140 x 140mm
Dimension (W x D x H)	160 x 200 x 48mm
Platform Material	ABS Plastic

Included Accessories: MSA04

Benchtop Equipment

Magnetic Stirrers



Model: MS-01AUA Analog Magnetic Stirrer

Speed Range	0~1500rpm
Max. Stirring Capacity	10,000mL
Max. Stir Bar Length	≤80mm
Max. Load	2.5kg
Environment	5°C - 40°C / Humidity <80%
Power	7.5W
Platform Dimensions	175 x 175mm
Dimension (W x D x H)	355 x 240 x 120mm
Platform Material	ABS Plastic

Included Accessories: MSA15



Model: MS-01DUA Digital Magnetic Stirrer

Speed Range	80~1500rpm
Max. Stirring Capacity	10,000mL
Max. Stir Bar Length	≤80mm
Timer	0-99hr 59min
Max. Load	3kg
Environment	5°C - 40°C / Humidity <80%
Power	12W
Display	LCD
Platform Dimensions	175 x 175mm
Dimension (W x D x H)	355 x 240 x 120mm
Platform Material	ABS Plastic

Included Accessories: MSA15

Accessories



MSA01	Stir Bar Retriever
MSA02	Stir Bar 8 x 50mm
MSA03	Stir Bar 10 x 40mm
MSA04	Stir Bar 12 x 30mm
MSA05	Stir Bar 7 x 20mm
MSA06	Stir Bar 6 x 15mm
MSA15	Stir Bar 12 x 50mm

Hot Plate Stirrers

Fast even heating with strong magnets that produce superior results.



Model: MS-01H7A Ceramic Digital Hotplate

Speed Range	80~1500rpm
Max. Stirring Capacity	10L
Max. Stir Bar Length	80mm
Power	1000W
Ambient Temp.	5~40°C
Platform Dimensions	175 x 175mm
Dimension (W x D x H)	355 x 240 x 129mm / 442 x 299 x 152mm
Platform Material	Ceramic

Included Accessories: MSA15



Model: MS-01HA Aluminum Digital Hotplate

Speed Range	80~1500rpm
Max. Stirring Capacity	10L
Max. Stir Bar Length	80mm
Power	1000W
Ambient Temp.	5~40°C
Platform Dimensions	175 x 175mm
Dimension (W x D x H)	355 x 240 x 129mm / 442 x 299 x 152mm
Platform Material	Aluminum

Included Accessories: MSA15

Benchtop Equipment

Multi-Position Hot Plate Stirrers

Elegant space-saving design provides both heating and stirring for multiple beaker or flask sizes simultaneously.



Model: MS-05HA 5-Position Hot Plate Stirrer

Speed Range	0rpm, 100rpm~1200rpm
No. of Stirrer Positions	5
Max. Stirring Capacity	500mL
Max. Stir Bar Length	≤50mm
Distance between positions	95mm
Environment	5°C - 40°C / Humidity <90%
Power	220W
Platform Dimensions	475 x 95mm
Dimension (W x D x H)	130 x 612 x 78mm
Platform Material	Black Glass Ceramic

Included Accessories: MSA04 x 5



Model: MS-10HA 10-Position Hot Plate Stirrer

Speed Range	0rpm, 100rpm~1200rpm
No. of Stirrer Positions	10
Max. Stirring Capacity	500mL
Max. Stir Bar Length	≤50mm
Distance between positions	95mm
Environment	5°C - 40°C / Humidity <90%
Power	450W
Platform Dimensions	475 x 190mm
Dimension (W x D x H)	214 x 612 x 78mm
Platform Material	Black Glass Ceramic

Included Accessories: MSA04 x 10



Model: MS-15HA 15-Position Hot Plate Stirrer

Speed Range	0rpm, 100rpm~1200rpm
No. of Stirrer Positions	15
Max. Stirring Capacity	500mL
Max. Stir Bar Length	≤50mm
Distance between positions	95mm
Environment	5°C - 40°C / Humidity <90%
Power	660W
Platform Dimensions	475 x 285mm
Dimension (W x D x H)	310 x 612 x 78mm
Platform Material	Black Glass Ceramic

Included Accessories: MSA04 x 15

Multi-Position Magnetic Stirrers

Multi-Position Magnetic Stirrer base is fully submersible, ideal for use in waterbaths or CO2 Incubator with Remote Control for easy operation.



Model: MS-04BSUA 4-Position Magnetic Stirrer

Speed Range	80~2000rpm
No. of Stirrer Positions	4
Max. Stirring Capacity	1000mL
Max. Stir Bar Length	≤50mm
Distance between positions	128mm
Ambient Temp	5~50°C (Water) / 5~40°C (Air)
Power	30W
Platform Dimensions	250 x 254mm
Dimension (W x D x H)	280 x 264 x 43mm
Platform Material	304 Stainless Steel

Included Accessories: MSA04



Model: MS-06BSUA 6-Position Magnetic Stirrer

Speed Range	80~2000rpm
No. of Stirrer Positions	6
Max. Stirring Capacity	1000mL
Max. Stir Bar Length	-<50mm
Distance between positions	64mm
Ambient Temp	5~50°C (Water) / 5~40°C (Air)
Power	40W
Platform Dimensions	385 x 254mm
Dimension (W x D x H)	390 x 264 x 42mm
Platform Material	304 Stainless Steel

Included Accessories: MSA04

Model: MS-15BSUA 15-Position Magnetic Stirrer

Speed Range	80~2000rpm
No. of Stirrer Positions	15
Max. Stirring Capacity	1000mL
Max. Stir Bar Length	-<20mm
Distance between positions	64mm
Ambient Temp	5~50°C (Water) / 5~40°C (Air)
Power	20W
Platform Dimensions	385 x 254mm
Dimension (W x D x H)	390 x 264 x 42mm
Platform Material	304 Stainless Steel

Included Accessories: MSA04

Benchtop Equipment

Mini Water Baths

Designed to provide precise and accurate temperature control for various size tubes 0.2mL to 7mL Tubes.



Model: WB-01A Programmable Digital Bath

Programmable	6 Segments
Temp. Range	Ambient +5°C~100°C
Temp. Uniformity	±0.3°C (@37°C)
Ambient Temp.	5~40°C
Bath Volume	240mL
Display	LCD
Max. Power	100W
Dimension (W x D x H)	262x143x96mm

Included Accessories: WBA14 Vapor Insulating Cover



Model: WB0-02A Digital Bath

Programmable	No
Temp. Range	Ambient +5°C~100°C
Temp. Uniformity	±0.3°C (@37°C)
Ambient Temp.	5~40°C
Bath Volume	240mL
Display	LCD
Max. Power	90W
Dimension (W x D x H)	262x143x96mm

Included Accessories: WBA Vapor Insulating Cover

Accessories



WBA10
5mL Tube Holder



WBA11
1.5mL/2mL Tube Holder



WBA12
96 Microplate Holder



WBA13
Combination Tube Holder



WBA14
Vapor Cover

Digital Dry Baths

Designed to provide accurate and stable temperature environment for a variety of tube/plate sizes. Choose 1, 2 or 4 block model, with over 30 blocks to choose from.



Model: DB-01A Programmable Digital Dry Bath

No. of Chambers	1
Programmable	6 Segments
Timer	0 - 99hr, Continuous
Temp. Range	Ambient +5°C~120°C
Temp. Fluctuation	@50~100°C; $\leq \pm 0.15^\circ\text{C}$; @100.1~120°C; $\leq \pm 0.2^\circ\text{C}$
Ambient Temp.	5~40°C
Display	LCD
Max. Power	100W
Dimension (W x D x H)	262 x 143 x 96mm

Included Accessories: DBA05 Insulating Cover



Model: DB-02A Digital Dry Bath

No. of Chambers	1
Timer	0 - 99hr, Continuous
Temp. Range	Ambient +5°C~120°C
Temp. Fluctuation	@50~100°C; $\leq \pm 0.15^\circ\text{C}$; @100.1~120°C; $\leq \pm 0.2^\circ\text{C}$
Ambient Temp.	5~40°C
Display	LCD
Max. Power	100W
Dimension (W x D x H)	262 x 143 x 96mm

Included Accessories: DBA05 Insulating Cover



Model: DB-03A 2-Block Digital Dry Bath

No. of Chambers	2
Programmable	6 Segments
Timer	0 - 99hr, Continuous
Temp. Range	Ambient +5°C~120°C
Temp. Fluctuation	@50~100°C; $\leq \pm 0.15^\circ\text{C}$; @100.1~120°C; $\leq \pm 0.2^\circ\text{C}$
Ambient Temp.	5~40°C
Display	LCD
Max. Power	150W
Dimension (W x D x H)	320 x 220 x 111mm

Included Accessories: DBA05 Insulating Cover x 2



Model: DB-04A 4-Block Digital Dry Bath

No. of Chambers	4
Programmable	6 Segments
Timer	0 - 99hr, Continuous
Temp. Range	Ambient +5°C~120°C
Temp. Fluctuation	@50~100°C; $\leq \pm 0.15^\circ\text{C}$; @100.1~120°C; $\leq \pm 0.2^\circ\text{C}$
Ambient Temp.	5~40°C
Display	LCD
Max. Power	150W
Dimension (W x D x H)	320 x 220 x 111mm

Included Accessories: DBA05 Insulating Cover x 4

Dry Bath

Accessories



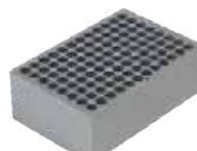
DBA01
24x5mL Block



DBA02
12x1.5mL Half Block



DBA03
10x10/15mL Half Block



DBA04
96x1.2mL Block



DBA06
24x1.5mL Block



DBA07
48x0.2mL Half Block



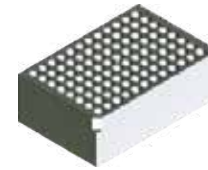
DBA08
24x1.5/2mL Block



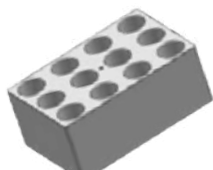
DBA09
30x.05mL Block



DBA10
Flat Block



DBA12
96x1.1/0.2mL PCR Block



DBA16
12x15mL Block



DBA17
5x50mL Block



DBA23
30x6mL Tubes Block



DBA25
20x13mL Tubes Block



DBA26
20x16mL Tubes Block



DBA27
12x15mL Block



DBA28
8x20mL Tubes Block



DBA29
8x25mL Tubes Block



DBA30
3x40mL Tubes Block



DBA36
20x12mL Vials Block



DBA37
20x15mL Vials Block



DBA38
20x16mL Vials Block



DBA39
12x17mL Vials Block



DBA40
12x19mL Vials Block



DBA41
9x21mL Vials Block



DBA42
8x23mL Vials Block



DBA43
8x25mL Vials Block



DBA44
6x28mL Vials Block



DBA05
Insulation Cover



DBA51
Tall Insulation Cover

Handheld UV Lamps

UV Lamps designed to observe and image DNA and RNA gels as well as plates for thin-layer chromatography.



Model: Corded	BG-10A	BG-30A	BG-40A
Product Name	Corded 254nm UV Lamp	Corded 365nm UV Lamp	Corded Switchable 254m / 365nm UV Lamp
UV Wavelength	254nm	365nm	254nm or 365nm
Window Size	150 x 50 mm (5.9 x 2.0 in)		
UV Intensity (Sensor 10cm away from UV Lamp)	408 $\mu\text{W}/\text{cm}^2$	620 $\mu\text{W}/\text{cm}^2$	254nm: 241 $\mu\text{W}/\text{cm}^2$ 365nm: 572 $\mu\text{W}/\text{cm}^2$
Number of UV Bulbs	2	2	1 x 254nm + 1 x 365nm
Operating Environment	Ambient Temperature: 5°C~40°C Ambient Relative Humidity: $\leq 90\%$		
Power Supply	AC110V+11V. 60Hz		
Dimensions WxDxH	88 x 415 x 60mm (3.5 x 16.3 x 2.4in)		
Net Weight	0.8 kg (1.75 lb)		
IP Protection Rating	IP21		
Certifications	CE		



Model: Portable	BG-12A	BG-32A	BG-44A
Product Name	Portable 254nm UV Lamp	Portable 365nm UV Lamp	Portable Switchable 254m / 365nm UV Lamp
UV Wavelength	254nm	365nm	254nm or 365nm
Window Size	150 x 50 mm (5.9 x 2.0 in)		
UV Intensity (Sensor 10cm away from UV Lamp)	408 $\mu\text{W}/\text{cm}^2$	620 $\mu\text{W}/\text{cm}^2$	254nm: 241 $\mu\text{W}/\text{cm}^2$ 365nm: 572 $\mu\text{W}/\text{cm}^2$
Number of UV Bulbs	2	2	1 x 254nm + 1 x 365nm
Operating Environment	Ambient Temperature: 5°C~40°C Ambient Relative Humidity: $\leq 90\%$		
Power Supply	Powered by a Lithium-Ion Battery, Charged by AC110V \pm 11V. 60Hz		
Dimensions WxDxH	88 x 415 x 60mm (3.5 x 16.3 x 2.4in)		
Net Weight	0.8 kg (1.75 lb)		
IP Protection Rating	IP21		
Certifications	CE		

Model: Portable	BG-12AA	BG-32AA	BG-42AA
Product Name	Portable 254nm UV Lamp	Portable 365nm UV Lamp	Portable Switchable 254m / 365nm UV Lamp
UV Wavelength	254nm	365nm	254nm or 365nm
Window Size	150 x 50 mm (5.9 x 2.0 in)		
UV Intensity (Sensor 10cm away from UV Lamp)	408 $\mu\text{W}/\text{cm}^2$	620 $\mu\text{W}/\text{cm}^2$	254nm: 241 $\mu\text{W}/\text{cm}^2$ 365nm: 572 $\mu\text{W}/\text{cm}^2$
Safety Feature	Automatically shuts off when UV lamp is tilted 135° from facing downward		
Number of UV Bulbs	2	2	1 x 254nm + 1 x 365nm
Operating Environment	Ambient Temperature: 5°C~40°C Ambient Relative Humidity: $\leq 90\%$		
Power Supply	Powered by a Lithium-Ion Battery, Charged by AC110V \pm 11V. 60Hz		
Dimensions WxDxH	88 x 415 x 60mm (3.5 x 16.3 x 2.4in)		
Net Weight	0.8 kg (1.75 lb)		
IP Protection Rating	IP21		
Certifications	CE		

Accessories



BG-B
BG UV Lamp Battery



BG-Glasses
BG Lamp Safety Glasses



BGA-01
254mm UV Bulb

BGA-2
365mm UV Bulb

Microincinerators

Designed to safely sterilize metal inoculation loops and needles utilizing infrared heating inside the ceramic devices without an open flame which protects the user.



Model: ST-14A Microincinerator with Adjustable Angle

Max.Temp in Operation Mode	900°C ±50°C
Max.Temp in Stand-alone Mode	600°C ±50°C
Ambient Temp.	4~60°C
Sterilization Time	3~5s
Relative Humidity	≤90% Non-condensing
Angle Adjustment	Yes
Power	200W
Depth of Heated Area	130mm
Max. Sample Diameter	14mm



Model: ST-14A Microincinerator with Fixed Angle

Max.Temp in Operation Mode	900°C ±50°C
Max.Temp in Stand-alone Mode	600°C ±50°C
Ambient Temp.	4~60°C
Sterilization Time	3~5s
Relative Humidity	≤90% Non-condensing
Angle Adjustment	No
Power	200W
Depth of Heated Area	130mm
Max. Sample Diameter	14mm

Accessory



STA01
Inoculation Loop Holder

Stainless Steel Dewar Flasks

The Stainless Steel Dewar Flasks are used to store and transport low-temperature liquids, and gases or high-temperature liquids. This product is available in 1000mL or 500mL and comes complete with vented stainless steel lids. Hot liquids, cooling of small samples, Liquid nitrogen (LN₂), dry ice, CO₂, and other cryogenic gases, are well suited for these insulated containers.



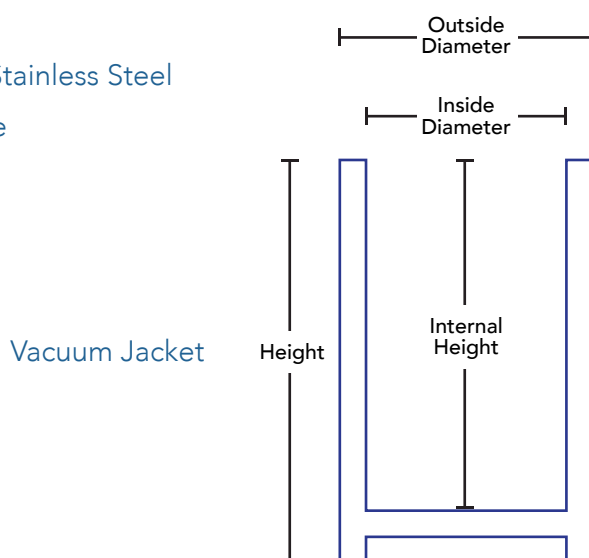
Model: SDF-500

Capacity	500mL
Outside Diameter	86mm / 3.38in
Inside Diameter	65mm / 2.56in
Height	203mm / 7.99in
Internal Height	182mm / 6.17in

Model: SDF-1000

Capacity	1000mL
Outside Diameter	120mm / 4.72in
Inside Diameter	100mm / 3.96in
Height	177mm / 6.97in
Internal Height	157mm / 6.18in

- Temperature Range: -190°C – 200°C
- Constructed of Pharmaceutical Grade Stainless Steel
- SDF-1000 includes a Removable Handle

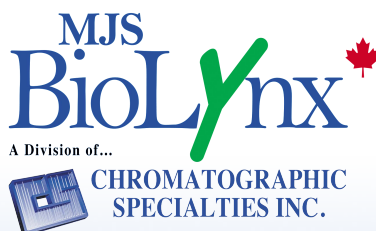


Crystal Industries Sales & Product Support:

crystalindustries.com



Available in Canada at ...



1-888-593-5969 • biolynx.ca • tech@biolynx.ca

