

# eZwest™ Lite

Automated Western Device



Consistent Results



Antibody Saving



Programmable



Completely Hands-off

**eZwest™** is a fully automated Western Blotting device completing the entire process of blocking, antibody incubation and washing steps. The device is easy to use and has minimal footprint.

- **Consistent Results:** Fully automated operation ensuring consistency every time
- **Antibody saving:** Recover the primary antibody for re-use
- **Programmable:** Easily customizable program for protocol need



Available in Canada from...

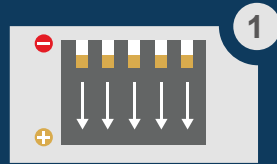
MJS  
**BioLynx**  
INC.

1-888-593-5969 • [www.biolynx.ca](http://www.biolynx.ca) • [tech@chromspec.com](mailto:tech@chromspec.com)

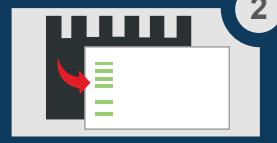


# Simplify & Save Hours of Labor in Your Western Blot Workflow

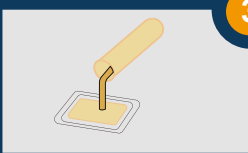
## Conventional



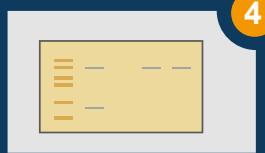
Perform electrophoresis



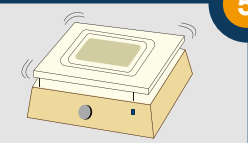
Transfer protein to blot



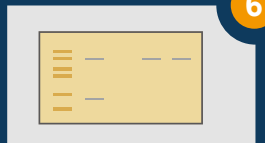
Block with blocking buffer



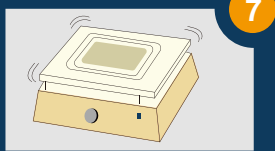
Incubate with primary antibody



Wash 3 times with wash buffer



Incubate with secondary antibody



Wash 3 times with wash buffer

## With GenScript



SurePage™ pre-cast gel



eBlot™ L1 Protein Transfer System



eZwest™ Lite Automated Western Device

## Results Comparison

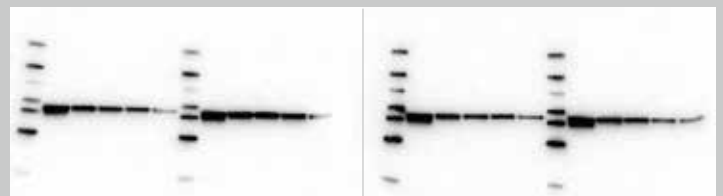
EGFR



Conventional

eZwest™

β-actin (42KD)



Conventional

eZwest™

eZwest™ produces similar or better results compared to results from the conventional method. Additionally, eZwest™ delivers **consistent and reproducible** results every time.