
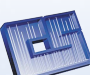


**Labnet** 

# Labnet Product Catalog

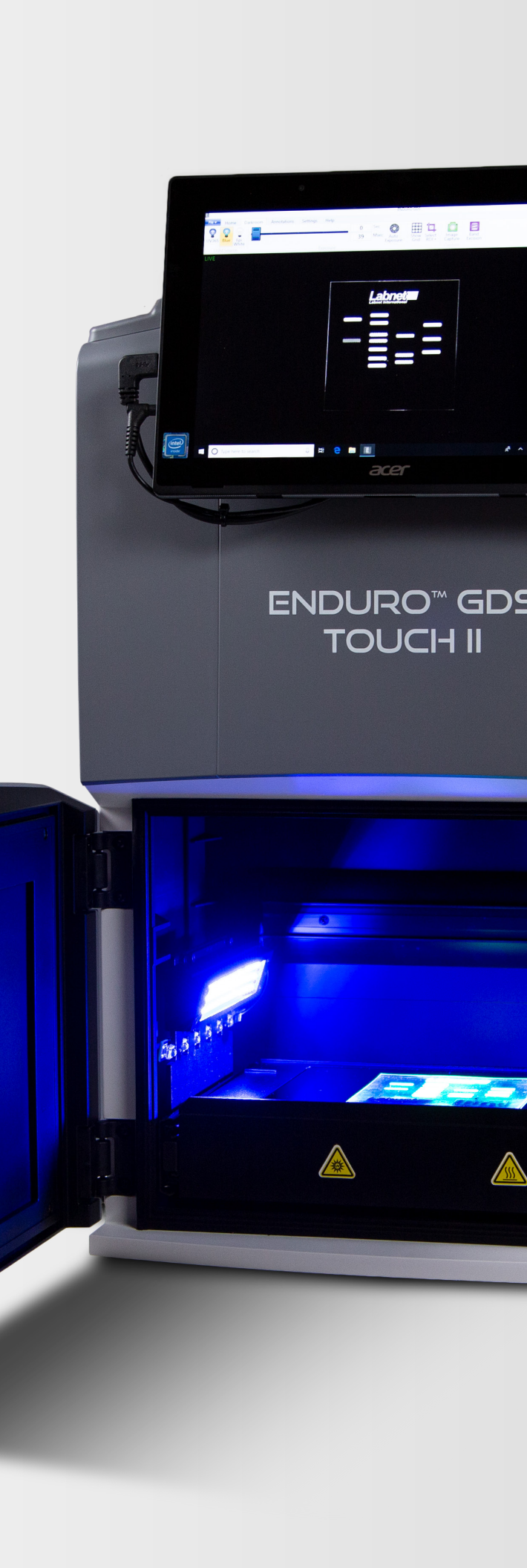
Find hundreds of quality lab products and accessories at affordable prices.



MJS  
**BioLynx**   
A Division of...  
 **CHROMATOGRAPHIC  
SPECIALTIES INC.**

1-888-593-5969  
[biolynx.ca](http://biolynx.ca) • [tech@biolynx.ca](mailto:tech@biolynx.ca)





## Table of Contents

<b>Centrifuges</b> .....	<b>1</b>
MPS 1001 Mini Plate Spinner .....	2
Mini Microcentrifuge .....	3
Spectrafuge™ 16M Microcentrifuge .....	4
Spectrafuge 24D Digital Microcentrifuge .....	5
Prism™ and Prism R Microcentrifuges .....	6
Spectrafuge 6C Centrifuge .....	7
<b>Liquid Handling</b> .....	<b>8</b>
BioPette™ A Single- and Multi-channel Pipettors .....	8
BioPette Plus Single- and Multi-channel Pipettors .....	9
Labpette™ FX Fixed Volume Pipettors .....	10
Pipettor Stands .....	11
Excel™ Electronic Pipettors .....	12
FastPette™ V2 Pipet Controller .....	13
FastPette Pro Pipet Controller .....	14
<b>Constant Temperature Equipment</b> .....	<b>15</b>
ProBlot™ 6 and 12 Hybridization Oven .....	15
Digital Shaking Incubator 211DS .....	16
Digital Shaking Incubator 311DS .....	17
Benchtop Shaking Incubator 222DS .....	18
Microtube Shaking Incubator .....	19
Vortemp™ 56 Shaking Incubator .....	20
Vortemp 1550 Shaking Incubator .....	21
Mini Incubator .....	22
AccuBlock™ Digital Dry Baths .....	23
AccuBlock Mini Compact Dry Bath .....	25
AccuPlate™ Digital Hot Plate Stirrers .....	26
Mini Water Bath .....	27
<b>Molecular Biology and Electrophoresis</b> .....	<b>28</b>
MultiGene™ OptiMax Thermal Cycler .....	29
AccuSeal™ Semi-automated Plate Sealer .....	31
Enduro™ Horizontal Gel Boxes .....	33
Enduro Gel XL – A Complete Electrophoresis System .....	34
Enduro VE10 Vertical Gel System .....	35
Enduro VE20 Vertical Gel System .....	36
Enduro VE10 Blotter .....	37
Enduro VE20 Blotter .....	38
Enduro Semi Dry Blotter .....	39
Enduro Power Supplies .....	40
Enduro Power Supplies Selection Guide .....	41
Enduro UV Transilluminators .....	42
Enduro GDS II Gel Documentation Systems .....	43



## Table of Contents

<b>Agitation Equipment</b> .....	<b>.44</b>
Vortexer Vortex Mixer .....	.44
Orbit™ P4 Digital Microtube and Microplate Shaker .....	.45
Orbit 300 Multipurpose Digital Vortexer .....	.46
Orbit 1000 Multipurpose Digital Shaker .....	.47
Orbit 1900 High Capacity Shaker .....	.48
Orbit LS Low Speed Shaker .....	.49
GyroMini™ and Enduro™ MiniMix™ Nutating 3-D Mixers .....	.50
Revolver™ Rotator .....	.51
Mini Lab Roller™ Rotator .....	.52
Pro 30 Reciprocal Shaker .....	.53
ProBlot™ Rocker 25 and 25XL .....	.54
Rocker 35 EZ .....	.55
Benchtop Shaking Incubator 222DS .....	.56
Vortemp™ 56 Shaking Incubator .....	.57
Vortemp 1550 Shaking Incubator .....	.58
<b>Plasticware</b> .....	<b>.59</b>
Microtube Workstation Rack .....	.59
50-place Microtube Box with Hinged Lid .....	.59
50-place Box with Telescoping Lid .....	.59
100-place Microtube Box with Hinged Lid .....	.60
Large Capacity Test Tube Rack .....	.61
Thermal Cycler Accessories .....	.61
Krystal™ 24 Plates .....	.62
Krystal 96 Plates .....	.62
Krystal 2000 Plates .....	.63
Assay Plates .....	.63
Deep Well Microplates .....	.64

# Centrifuges

## Centrifuge Selection Guide

	Maximum RCF [x g]	Rotor Options	Max. Microtube (Angle Rotor)	Max. 15 mL Tubes (Angle Rotor)	Max. 50 mL Tubes (Angle/Swing-out Rotor)	Digital Display	Refrigeration	RPM/RCF Conversion	Rotor for Plates
Mini Plate Spinner	500	1	–	–	–	No	No	No	Yes
Mini Microcentrifuge	2,000	2	6	–	–	No	No	No	No
Spectrafuge™ 16M	16,000	1	18	–	–	No	No	No	No
Spectrafuge 24D	16,300	1	24	–	–	Yes	No	Yes	No
Prism	21,200	1	24	–	–	Yes	No	Yes	No
Prism R	17,135	1	24	–	–	Yes	Yes	Yes	No
Spectrafuge 6C	4,000	1	–	6	–	Yes	No	No	No

## Centrifuge Tube Guide



1.5 mL/2.0 mL  
(11 x 42 mm)



5 mL  
(12 x 75 mm)



7 mL  
(13 x 100 mm)



10-15 mL  
(16 x 100 mm)



15 mL conical  
(17 x 120 mm)

# MPS 1001 Mini Plate Spinner

The Labnet MPS 1001 Mini Plate Spinner is the first centrifuge designed specifically for quick and easy centrifugation of samples in PCR microplates.

Centrifuges that accept microplates are typically larger units that take up valuable space on the bench. The unique design of the Labnet MPS 1001 Mini Plate Spinner allows for a compact centrifuge that has an extremely small footprint. Two standard microplates are loaded through a slot in the top of the unit. Sealed microplates are loaded vertically. Surface tension keeps samples in place so there is no danger of spilling. Upon closing the lid of the unit, the rotor quickly accelerates the microplates to 2,500 rpm. Opening the lid engages the brake and brings the rotor to a stop. For temperature-sensitive applications, the Mini Plate Spinner may be used in a cold room.

- Capacity for two standard plates
- Top loading design
- Exceptionally small footprint
- Timer
- Starts and stops in seconds



## Specifications

Capacity	2 x 96- or 384-well PCR microplates
Maximum speed	2,500 rpm $\pm$ 10%
Maximum RCF	500 x g
Timer	0 to 99 min.
Temperature range	5°C to 40°C (up to 80% RH at 31°C, decreasing linearly to 50% RH at 40°C)
Dimensions (W x D x H)	7.5 x 8.6 x 7.3 in. (19 x 22 x 18.6 cm)
Weight	5.7 lbs. (2.6 kg)

## Ordering Information

Cat. No.	Description
C1001	MPS 1001 Mini Plate Spinner, 120V
C1001-100V	MPS 1001 Mini Plate Spinner, 100V
C1001-230V	MPS 1001 Mini Plate Spinner, 230V, EU and UK plug

## Accessories

Cat. No.	Description	Qty/Pk
C1000- ADAPT	Adapter for PCR strips, blue	1

# Mini Microcentrifuge

Simple and convenient to operate, the Labnet Mini Microcentrifuges feature greater capacity (8-place microcentrifuge tubes and 4-place PCR strip rotors), a quick-release rotor system, and electronic brake. Once samples are loaded and the lid is closed, the rotor rapidly accelerates to 6,000 rpm, making it an ideal centrifuge for bringing small droplets to the bottom of tubes for micro-filtrations or basic separations.

- Quick release rotor system – no tools needed to exchange rotors
- Electronic braking – allows for more rapid deceleration, less waiting
- Dual lid switch
- Compact, rugged design
- 2-year warranty



## Specifications

Capacity	8 x 1.5/2.0 mL or 4 x 0.2 mL strips
Maximum speed	6,000 rpm
Maximum RCF	2,000 x g*
Dimensions (W x D x H)	6.8 x 5.8 x 4.8 in. (17.2 x 14.7 x 12.2 cm)
Weight	2.65 lbs. (1.2 kg)
Electrical	AC 100-240V, 50/60Hz

\*Average max. RCF in the strip tube rotor is 1,180 to 2,000 x g

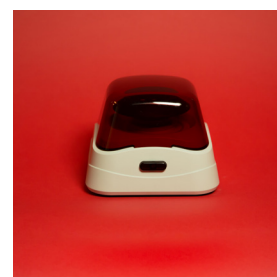
## Ordering Information

Cat. No.	Description
C1601-B	Mini centrifuge, blue lid, 100-240V
C1601-P	Mini centrifuge, purple lid, 100-240V
C1601-R	Mini centrifuge, red lid, 100-240V
C1601-G	Mini centrifuge, grey lid, 100-240V

Mini Microcentrifuges are delivered with universal power supply and set of plugs: US, EU, UK, and AU.

## Accessories

Cat. No.	Description	Qty/Pk
6770-RT	Rotor for 8 x 1.5/2.0 mL tubes	1
6770-RTS	Rotor for 4 x 8-strip tubes	1
6770-RTA.20	Individual adapters for 0.2 mL tubes, fits in rotor 6770-RT	8
6770-RTA.25	Individual adapters for 0.25 mL tubes, fits in rotor 6770-RT	8
6770-RTA.5	Individual adapters for 0.5 mL tubes, fits in rotor 6770-RT	8
401025	Power adapter, 24V	1



# Spectrafuge™ 16M Microcentrifuge

The Spectrafuge 16M is the perfect high speed compact microcentrifuge. Producing a maximum of 16,000 x g, it is the ideal unit for DNA applications. A brushless, maintenance-free motor provides extremely fast acceleration and deceleration of the 18-place rotor and makes the Spectrafuge 16M one of the quietest microcentrifuge in its class.

Speed and time are set with the control knobs on the front panel of the unit. A “Quick” button allows for momentary runs. A continuous flow of ambient air through the rotor chamber keeps the rotor and samples cool. For applications requiring sub-ambient temperatures, the Spectrafuge 16M may be operated in a cold room.

The Spectrafuge 16M is supplied complete with an 18-place rotor for 1.5/2.0 mL tubes. Smaller tubes are accommodated by adapters (sold separately). The optional Strip-Spin™ rotor adapter holds two 8 x 0.2 mL strips, typically used for PCR.



## Specifications

Capacity	18 x 1.5/2.0 mL
Maximum speed	14,000 rpm
Maximum RCF	16,000 x g
Timer	1 to 30 min. or continuous “Quick” button for momentary operation
Ambient operating range	5°C to 40°C (up to 80% RH at 31°C, decreasing linearly to 50% RH at 40°C)
Dimensions (W x D x H)	8.3 x 8.9 x 7.2 in. (21.0 x 22.5 x 18.3 cm)
Weight	10 lbs. (4.5 kg)
Electrical	120V or 230V, 50/60Hz

## Ordering Information

Cat. No.	Description
C0160	Spectrafuge 16M microcentrifuge, standard gray, 120V
C0160-B	Spectrafuge 16M microcentrifuge, blue accents, 120V
C0160-P	Spectrafuge 16M microcentrifuge, purple accents, 120V
C0160-R	Spectrafuge 16M microcentrifuge, red accents, 120V
C0160-T	Spectrafuge 16M microcentrifuge, teal accents, 120V
C0160-230V	Spectrafuge 16M microcentrifuge, standard gray, 230V, EU and UK plug
C0160-B-230V	Spectrafuge 16M microcentrifuge, blue accents, 230V, EU and UK plug
C0160-P-230V	Spectrafuge 16M microcentrifuge, purple accents, 230V, EU and UK plug
C0160-R-230V	Spectrafuge 16M microcentrifuge, red accents, 230V, EU and UK plug
C0160-T-230V	Spectrafuge 16M microcentrifuge, teal accents, 230V, EU and UK plug

## Accessories

Cat. No.	Description	Qty/Pk
C0160-SS	StripSpin™ adapter for two 8 x 0.2 ml tubes strips	1
C1205	Individual adapters for 0.5/0.6 mL tubes	6
C1206	Individual adapters for 0.4/0.25 mL tubes	6
C1222	Individual adapters for 0.2 mL thermal cycling tubes	6

# Spectrafuge™ 24D Digital Microcentrifuge

The Spectrafuge 24D Microcentrifuge combines innovations such as a unique, easy access rotor, exclusive multi-flow air cooling system and high performance drive with a digital microprocessor that precisely regulates operation. Parameters are selected with two “smart” knobs and values are shown on large, easy to read, LED displays. Speed can be set and displayed in rpm or g-force while runs may be timed, continuous, or momentary.

The unique design of the 24-place aluminum rotor allows easy access to the tops of the tubes. An optional StripSpin™ adapter fits onto the rotor for spinning 0.2 mL tubes and strips. A powerful, brushless motor quickly accelerates the rotor to set speed.

Air enters the centrifuge through vents on the back of the housing and is circulated in multiple directions to maximize cooling. The result is a cool running microcentrifuge that keeps samples close to ambient temperature, even during extended runs at maximum speed. For samples that require below ambient temperatures, the Spectrafuge 24D may be used in a cold room.



## Specifications

Capacity	24 x 1.5/2.0 mL
Maximum speed	13,300 rpm
Maximum RCF	16,300 x g
Timer	1 to 30 min. or continuous, “Quick” button for momentary operation
Ambient operating range	5°C to 40°C (up to 80% RH at 31°C, decreasing linearly to 50% RH at 40°C)
Dimensions (W x D x H)	9.3 x 11.5 x 8.5 in. (23.5 x 29.2 x 21.6 cm)
Weight	18 lbs. (8.1 kg)

## Ordering Information

Cat. No.	Description
C2400	Spectrafuge 24D digital microcentrifuge, standard gray, 120V
C2400-B	Spectrafuge 24D digital microcentrifuge, blue accents, 120V
C2400-T	Spectrafuge 24D digital microcentrifuge, teal accents, 120V
C2400-P	Spectrafuge 24D digital microcentrifuge, purple accents, 120V
C2400-R	Spectrafuge 24D digital microcentrifuge, red accents, 120V
C2400-100V	Spectrafuge 24D digital microcentrifuge, standard gray, 100V
C2400-B-100V	Spectrafuge 24D digital microcentrifuge, blue accents, 100V
C2400-T-100V	Spectrafuge 24D digital microcentrifuge, teal accents, 100V
C2400-P-100V	Spectrafuge 24D digital microcentrifuge, purple accents, 100V
C2400-R-100V	Spectrafuge 24D digital microcentrifuge, red accents, 100V
C2400-230V	Spectrafuge 24D digital microcentrifuge, standard gray, 230V, EU and UK plug
C2400-B-230V	Spectrafuge 24D digital microcentrifuge, blue accents, 230V, EU and UK plug
C2400-T-230V	Spectrafuge 24D digital microcentrifuge, teal accents, 230V, EU and UK plug
C2400-P-230V	Spectrafuge 24D digital microcentrifuge, purple accents, 230V, EU and UK plug
C2400-R-230V	Spectrafuge 24D digital microcentrifuge, red accents, 230V, EU and UK plug

## Accessories

Cat. No.	Description	Qty/Pk
C1205	Adapter for 0.5 mL tubes	6
C1206	Adapter for 0.4 mL tubes	6
C1222	Adapter for 0.2 mL tubes	6
C2400-SS	Strip spin adapter for 0.2 mL tubes or 8 x 0.2 mL strips	1



Strip spin adapter  
(Cat. No. C2400-SS)



# Prism™ and Prism R Microcentrifuges

The Prism and Prism R are the premier models to Labnet's microcentrifuge line. These two units feature powerful brushless motors and an intuitive control panel.

The Prism is the air-cooled model, which was designed to keep samples close to ambient temperature, even when operating at maximum speed. It can also be used in a cold room.

The Prism R is the refrigerated model that incorporates a powerful cooling system that maintains temperatures as low as -10°C and can reach 4°C in less than 8 minutes.

Speed in both units is easily set and displayed in either rpm or rcf. Operation of the units can be timed, continuous, or momentary, using the "Quick" button. Vibration-free operation is ensured by an isolation system. In the event of a significant imbalance, operation of the centrifuge is automatically stopped for safety. Deceleration at the end of a run is very quick, but will not disrupt samples.

Both of these centrifuges are supplied with a uniquely designed 24 x 1.5/2.0 mL rotor that allows easy access to the tops of the sample tubes. Individual tube slots in the solid aluminum rotor support tubes along their length and contain the sample in the event of tube failure. Adapters are available for smaller tubes as well as PCR strips. The rotor is seated on a tapered shaft which facilitates easy removal for cleaning and autoclaving.



## Specifications

	Prism	Prism R
Capacity	24 x 1.5/2.0 mL	24 x 1.5/2.0 mL
Maximum speed	15,000 rpm	13,500 rpm
Maximum RCF	21,200 x g	17,135 x g
Timer	0.5 to 99 min. or continuous	0.5 to 99 min. or continuous
Cooling system	–	-10°C to 40°C
Ambient operating range	5°C to 40°C (up to 80% RH at 31°C, decreasing linearly to 50% RH at 40°C)	5°C to 30°C, ≤80% RH
Dimensions (W x D x H)	10.1 x 14.2 x 7.6 in. (25.7 x 36.0 x 19.4 cm)	11 x 17 x 9.8 in. (28 x 43 x 24.8 cm)
Weight	21 lbs. (9.6 kg)	44 lbs. (20 kg)



## Ordering Information

Cat. No.	Description
C2500	Prism air-cooled microcentrifuge with 24-place rotor, 120V
C2500-230V	Prism air-cooled microcentrifuge with 24-place rotor, 230V, EU and UK plug
C2500-R	Prism R refrigerated microcentrifuge with 24-place rotor, 120V
C2500-100V	Prism R refrigerated microcentrifuge with 24-place rotor, 100V
C2500-R-230V	Prism R refrigerated microcentrifuge with 24-place rotor, 230V, EU and UK plug

## Accessories

Cat. No.	Description	Qty/Pk
C1205	Adapter for 0.5 mL tubes	6
C1206	Adapter for 0.4 mL tubes	6
C1222	Adapter for 0.2 mL tubes	6
C2400-SS	Strip spin adapter for 0.2 mL tubes or 8 x 0.2 mL strips	1

# Spectrafuge™ 6C Centrifuge

The Spectrafuge 6C has been designed for quick production of PPP (platelet-poor plasma) or PRP (platelet-rich plasma) as well as other applications in the clinical and research laboratory.

The fixed angle rotor of the Spectrafuge 6C holds up to 6 x 15 mL conical tubes of maximum tube height of 120 mm, and with adapters will accommodate most common blood draw tubes. Variable speed allows for a variety of applications to be performed. A timer controls operation from 30 seconds to 30 minutes or can be set to “hold” for continuous operation.

The control panel of the centrifuge features easy turn knobs and large digital displays for time and speed. During operation of the centrifuge, the lid is locked. Once the rotor has come to a stop, the lid knob can be pressed to unlock the lid and gain access to the samples.

A small footprint allows the Spectrafuge 6C to fit on even the most crowded bench. Its rugged construction will provide years of trouble free operation. The centrifuge is cold room compatible.



## Specifications

Capacity	6 x 15 mL
Maximum speed	6,200 rpm
Maximum RCF	4,000 x g
Timer	0.5 to 30 min. or continuous
Ambient operating range	5°C to 40°C (up to 80% RH at 31°C, decreasing linearly to 50% RH at 40°C)
Dimensions (W x D x H)	10.6 x 12.0 x 8.3 in. (26.9 x 30.4 x 21.1 cm)
Weight	10 lbs. (4.5 kg)

## Ordering Information

Cat. No.	Description
C0060	Spectrafuge 6C centrifuge, with 6 x 10/15 mL rotor, 120V
C0060-230V	Spectrafuge 6C centrifuge, with 6 x 10/15 mL rotor, 230V, EU and UK plug

## Accessories

Cat. No.	Description	Qty/Pk
C0200-17A	Adapter for 5 mL (12 x 75 mm) and 7 mL (13 x 100 mm) tubes	6

## BioPette™ A Single- and Multi-channel Pipettors

Available in single-, 8-, and 12-channel configurations, all BioPette A Pipettors are autoclavable and feature smooth plunger movement with low pipetting forces. Volume can be set by turning either the thumb wheel or the plunger button. BioPette A pipettors have been designed to maintain their calibration, even after repeated use and autoclaving. A calibration key is included with each pipettor for easy in-house calibration.

BioPette A multi-channel pipettors feature individually spring-loaded piston assemblies for positive tip sealing and a curved ejector bar requiring minimal ejection force. The multi-channel manifold rotates 360° for ejecting and pipetting in any position.

- Factory calibrated to strict ISO 8655 standards
- Calibration key included with each pipettor for easy in-house calibration
- Fully autoclavable and UV-resistant
- Designed for universal fit with all common brands of pipet tips
- Adjustable tip ejector in all single-channel models
- 3-year warranty

### Ordering Information

Cat. No.	Volume Range (µL)	Channels	Accuracy (%)	Precision (%)	Non-filtered Tip (µL)
P3960-2A	0.1-2	1	±40.0 to ±1.5	≤12.0 to ≤0.7	10
P3960-10A	0.5-10	1	±4.0 to ±0.5	≤2.8 to ≤0.4	10
P3960-20A	2-20	1	±3.0 to ±0.8	≤1.5 to ≤0.3	200
P3960-100A	10-100	1	±1.6 to ±0.8	≤0.8 to ≤0.2	200
P3660-200A	20-200	1	±1.2 to ±0.6	≤0.6 to ≤0.2	200
P3960-1000A	100-1,000	1	±1.6 to ±0.6	≤0.4 to ≤0.15	1,000
P3960-5000A	1,000-5,000	1	±0.6 to ±0.5	≤0.25 to ≤0.15	5,000
P3960-10000A	1,000-10,000	1	±2.5 to ±0.5	≤0.6 to ≤0.2	10,000
P4608-10A	1-10	8	±8.0 to ±2.0	≤6.0 to ≤1.2	10
P4608-50A	5-50	8	±4.0 to ±1.6	≤2.5 to ≤0.6	200
P4608-200A	20-200	8	±3.0 to ±1.0	≤1.5 to ≤0.6	200
P4608-300A	50-300	8	±1.6 to ±1.0	≤1.5 to ≤0.6	300
P4612-10A	1-10	12	±8.0 to ±2.0	≤6.0 to ≤1.2	10
P4612-50A	5-50	12	±4.0 to ±1.6	≤2.5 to ≤0.6	200
P4612-200A	20-200	12	±3.0 to ±1.0	≤1.5 to ≤0.6	200
P4612-300A	50-300	12	±1.6 to ±1.0	≤1.5 to ≤0.6	300

Cat. No.	Description
P3960-SK4	<p>Labnet BioPette A Starter Kit</p> <p>Includes 4 single-channel pipettors with calibration keys and shelf clips: 0.5-10 µL (Cat. No. P3960-10A), 2-20 µL (Cat. No. P3960-20A), 20-200 µL (Cat. No. P3960-200A), 100-1,000 µL (Cat. No. P3960-1000A); universal carousel stand for six single-channel pipettors (Cat. No. P3985-P); 3 racks of pipet tips: 10 µL (Cat. No. 301-03-102), 200 µL (Cat. No. 301-02-152), and 1,000 µL (Cat. No. 301-01-302).</p>



QC certificate delivered with each product



# BioPette™ Plus Single- and Multi-channel Pipettors

Available in single-, 8-, and 12-channel configurations, all BioPette Plus Pipettors feature smooth plunger movement with low pipetting forces. Volume can be set by turning either the thumb wheel or the plunger button and is protected by a locking mechanism. BioPette Plus pipettors have been designed to maintain their calibration, even after repeated use and autoclaving.

BioPette Plus Multi-channel Pipettors feature individually spring-loaded piston assemblies for positive tip sealing and a curved ejector bar requiring minimal ejection force. The multi-channel manifold rotates 360° for ejecting and pipetting in any position.

All BioPette Plus Pipettors feature an accurate and precise pipetting mechanism, enclosed in an ergonomic, well-balanced, and robust handle.

- Factory calibrated to strict ISO 8655 standards
- Calibration key is included with each pipettor for easy in-house calibration
- Fully autoclavable and UV-resistant
- Designed for universal fit with all common brands of pipet tips
- Adjustable tip ejector in all single-channel models
- Volume set protected by a locking mechanism
- 3-year warranty



## Ordering Information

Cat. No.	Volume Range (µL)	Channels	Accuracy (%)	Precision (%)	Non-filtered Tip (µL)
P3942-2	0.1-2	1	±40.0 to ±1.5	≤12.0 to ≤0.7	10
P3942-10	0.5-10	1	±4.0 to ±0.5	≤2.8 to ≤0.4	10
P3942-20	2-20	1	±3.0 to ±0.8	≤1.5 to ≤0.3	200
P3942-100	10-100	1	±1.6 to ±0.8	≤0.8 to ≤0.2	200
P3942-200	20-200	1	±1.2 to ±0.6	≤0.6 to ≤0.2	200
P3942-1000	100-1,000	1	±1.6 to ±0.6	≤0.4 to ≤0.15	1,000
P3942-5000	1,000-5,000	1	±0.6 to ±0.5	≤0.25 to ≤0.15	5,000
P3942-10000	1,000-10,000	1	±2.5 to ±0.5	≤0.6 to ≤0.2	10,000
P4808-10	0.5-10	8	±8.0 to ±2.0	≤6.0 to ≤1.2	10
P4808-50	5-50	8	±4.0 to ±1.6	≤2.5 to ≤0.6	200
P4808-200	20-200	8	±3.0 to ±1.0	≤1.5 to ≤0.6	200
P4808-300	50-300	8	±1.6 to ±1.0	≤1.5 to ≤0.6	300
P4812-10	0.5-10	12	±8.0 to ±2.0	≤6.0 to ≤1.2	10
P4812-50	5-50	12	±4.0 to ±1.6	≤2.5 to ≤0.6	200
P4812-200	20-200	12	±3.0 to ±1.0	≤1.5 to ≤0.6	200
P4812-300	50-300	12	±1.6 to ±1.0	≤1.5 to ≤0.6	300

Cat. No.	Description
P3942-SK4	<p>Labnet BioPette Plus Starter Kit</p> <p>Includes 4 single-channel pipettors with calibration keys and shelf clips: 0.5-10 µL (Cat. No. P3942-10), 2-20 µL (Cat. No. P3942-20), 20-200 µL (Cat. No. P3942-200), 100-1,000 µL (Cat. No. P3942-1000); universal carousel stand for six single-channel pipettors (Cat. No. P3985-P); 3 racks of pipet tips: 10 µL (Cat. No. 301-03-102), 200 µL (Cat. No. 301-02-152), and 1,000 µL (Cat. No. 301-01-302).</p>



# Labpette™ FX Fixed Volume Pipettors

Labnet Labpette™ FX Fixed Volume Pipettors are ideal for applications where specific volumes are used repeatedly and sterilization by autoclaving is required.

The pipettors feature an ergonomically designed body and finger rest for comfortable grip even during extended pipetting sessions. The smooth plunger movement and unique twist-eject tip removal system require minimal force and help to reduce the risk of repetitive strain injuries. The Labpette FX Pipettors offer excellent chemical resistance and retain their high level of accuracy and precision during repeated use.

Labpette FX Pipettors are fully autoclavable to avoid sample cross-contamination as well as color-coded for easy identification and proper tip selection. Each pipettor is individually tested and supplied with a factory calibration certificate.

- ▶ Factory calibrated to strict ISO 8655 standards
- ▶ Seventeen fixed volumes from 2 to 1,000 µL
- ▶ Ergonomically designed handle and finger rest
- ▶ Unique twist-eject tip removal system
- ▶ Calibration key included with each pipettor for easy in-house calibration
- ▶ Fully autoclavable and UV-resistant
- ▶ 3-year warranty



## Ordering Information

Cat. No.	Volume (µL)	Accuracy (%)	Precision (%)	Non-filtered Tip (µL)
P3900-2	2	±3.0	≤1.5	200
P3900-5	5	±2.0	≤1.0	200
P3900-10	10	±1.2	≤0.5	200
P3900-20	20	±0.9	≤0.4	200
P3900-40	40	±0.9	≤0.3	200
P3900-50	50	±0.9	≤0.3	200
P3900-70	70	±0.9	≤0.3	200
P3900-75	75	±0.9	≤0.3	200
P3900-100	100	±0.9	≤0.3	200
P3900-120	120	±0.8	≤0.3	200
P3900-150	150	±0.7	≤0.3	200
P3900-200	200	±0.6	≤0.2	200
P3900-250	250	±0.6	≤0.2	1,000
P3900-300	300	±0.6	≤0.2	1,000
P3900-400	400	±0.6	≤0.2	1,000
P3900-500	500	±0.6	≤0.2	1,000
P3900-1000	1,000	±0.6	≤0.2	1,000

# Pipettor Stands

Ensure convenient storage of single- and multi-channel pipettors.

## Ordering Information

Cat. No.	Description
SP19475	Shelf clip for one single- or multi-channel BioPette™ Plus pipettor
P5448	8-position stand for single-, 8-, or 12-channel pipettors
P5423	Universal stand for one single-, 8-, or 12-channel pipettor
P3985-P	Universal carousel stand for six single-channel pipettors (up to 1,000 µL)
P3982	Universal linear stand for four pipettors (four single-channel, maximum of two 8-channel or 12-channel pipettors)



# Excel™ Electronic Pipettors

The Excel is an ergonomic, intuitive electronic pipettor for use in most laboratory applications. Its high precision stepping motor controls piston action, resulting in exceptional accuracy and precision.

Lightweight construction and ergonomic design with comfortable finger hook further reduce the risk of repetitive stress injuries. The pipettors are powered by rechargeable Li-ion battery allowing for 2,000 pipetting cycles after fully charged.

The Excel helps to optimize every lab work with functions such as multi-dispensing, serial dilution and mixing, easily navigated through the user-friendly interface. Available in single-, 8- and, 12-channel configurations, the Excel pipettors feature adjustable tip ejector along with wide tip compatibility. The Labnet Excel multi-channel pipettors are ideal for working with a 96-well format.

Each pipettor is individually tested and supplied with a certificate of quality.

- Factory calibrated to strict ISO8655 standard
- Large LCD screen and simple interface
- Ergonomically designed handle and finger rest
- Lower portion easily removed for autoclaving
- Rechargeable Li-ion battery
- 1-year warranty



## Ordering Information

Cat. No.	Volume Range (µL)	Channels	Accuracy (%)	Precision (%)	Non-filtered Tip (µL)
P3600L-10	0.5-10	1	±4.0 to ±1.0	<2.5 to <0.4	10
P3600L-20	2-20	1	±4.0 to ±1.0	<2.5 to <0.4	10
P3600L-200	10-200	1	±2.5 to ±0.6	<1.0 to <0.15	200
P3600L-1200	100-1,200	1	±2.5 to ±0.5	<0.6 to <0.15	1,000/1,200
P3608L-10	0.5-10	8	±4.0 to ±1.5	<2.5 to <0.4	10
P3608L-20	2-20	8	±4.0 to ±1.0	<2.5 to <0.3	10
P3608L-200	10-200	8	±3.0 to ±0.6	<1.0 to <0.15	200
P3608L-1200	100-1,200	8	±3.0 to ±0.5	<0.8 to <0.2	1,000/1,200
P3612L-10	0.5-10	12	±4.0 to ±1.5	<2.5 to <0.5	10
P3612L-20	2-20	12	±4.0 to ±1.0	<2.5 to <0.5	10
P3612L-200	10-200	12	±3.0 to ±0.6	<1.0 to <0.15	200
P3612L-1200	100-1,200	12	±3.0 to ±0.5	<0.8 to <0.2	1,000/1,200

Pipettors are delivered with universal power supply and set of the plugs: US, EU, UK, and AU.

## Accessories

Cat. No.	Description
P3600L-BAT-1	Extra Li-ion battery, for all voltages
P3628L	Shelf clip for Excel Electronic Pipettor, holds 1 pipettor
P3630L	Acrylic stand for Excel Electronic Pipettor, holds 3 pipettors
P3935L	Carousel stand for Excel Electronic Pipettor, holds 6 pipettors
T01-000131-00	Travel charger and pin for US
T01-000134-00	Travel charger and pin for EU
125-161WP0-02UK	Travel charger and pin for UK
T01-000133-00	Travel charger and pin for AU



Excel™ Electronic Pipettors on acrylic stand



Excel Electronic Pipettors on carousel stand

# FastPette™ V2 Pipet Controller

The FastPette V2 is a battery powered pipet controller ideal for liquid handling with 0.5 to 100 mL glass or plastic serological pipets. Designed with the user in mind, the FastPette has a lightweight handle with smooth finger triggers and ergonomically located switches.

The aspiration speed can be set to high or low to adjust for the volume of the pipet and viscosity of the liquid. The suction can also be adjusted by the amount of pressure applied to the trigger button. Liquids can be dispensed by gravity or by blow out using the motorized pump.

The FastPette V2 is protected from the entrance of liquids by a PTFE filter. To protect samples from cross contamination, both the filter and pipet holder are easily exchanged and autoclaved.

- Works with pipets from 0.5 mL to 100 mL
- Cordless work for up to 8 continuous hours
- Ergonomically designed
- Autoclavable pipet holder
- UV-resistant body
- Delivered with universal power supply and set of the plugs: US, EU, UK, and AU
- 1-year warranty



## Ordering Information

Cat. No.	Description
P2000	FastPette V2 Pipet Controller is supplied with a universal power supply*, wall hanger, bench stand, and 0.2 µm PTFE filter

\*Universal power supply comes with US, EU, UK and AU plugs.

## Accessories

Cat. No.	Description	Qty/Cs
SP9143	PTFE autoclavable filter, 0.2 µm	5
SP9144	PTFE autoclavable filter, 0.45 µm	5
SP9029	Wall hanger	1
P2029	Bench stand	1
SP29052	Nosepiece	1
SP29054	Pipet holder	1



# FastPette™ Pro Pipet Controller

The FastPette Pro is a lightweight and ergonomically designed automatic pipet controller ideal for liquid handling with 0.5 to 100 mL glass or plastic serological pipets. Conveniently positioned switches allow toggling of operation modes and aspiration speeds for high precision handling to suit different pipet volumes and liquid viscosities. Additionally, aspirating and dispensing speed is controlled by two comfortable finger triggers. Liquids can be dispensed by gravity or by blow out using the motorized pump.

In order to protect the device against overfilling, the FastPette Pro is equipped with a 0.2 µm PTFE filter. The PTFE filter, pipet holder and nosepiece are fully autoclavable and can be individually replaced as needed.

- Triggers convenient for one or two finger control of speed and mode
- LCD display for convenient visualization of speed, modes, and battery status
- Easy access to the battery compartment. NiMH batteries allow cordless work for up to 8 hours
- Charging stand for bench or wall mounting
- Autoclavable pipet holder
- UV-resistant body
- 1-year warranty

## Ordering Information

Cat. No.	Description
P2002	FastPette Pro is supplied with a universal power supply*, an additional autoclavable 0.2 µm filter, and a two-position charging stand

\*Universal power supply comes with US, EU, UK and AU plugs.

## Accessories

Cat. No.	Description	Qty/Cs
SP9143	PTFE autoclavable filter, 0.2 µm	5
SP9144	PTFE autoclavable filter, 0.45 µm	5
SP29052	Nosepiece	1
SP29054	Pipet holder	1
SP29055	Two-position charging stand	1
SP9029	Wall hanger	1
SP29066	Battery set	3



## ProBlot™ 6 and 12 Hybridization Oven

The rotisserie and incubation system in the ProBlot Hybridization Ovens provide the perfect conditions for consistent results with low background. Mechanical convection creates an extremely uniform environment by circulating air through the chamber while heat input is controlled by a microprocessor. A see through window in the door allows for sample visualization without disrupting the interior temperature. The desired agitation level is obtained with the variable speed and adjustable axis rotisserie.

- Precise temperature control and stability for reproducible results
- Variable speed rotisseries hold 35 mm bottles and 50 mL tubes
- Durable stainless steel interior
- Optional accessories include rocking platforms and different sized rotisseries

### Specifications

	ProBlot 6	ProBlot 12
Bottle capacity	6 large or 12 small	12 large or 24 small
Optional rocker speed	8 to 40 rpm	8 to 40 rpm
Chamber temperature range	Ambient, 5°C to 80°C	Ambient, 5°C to 80°C
Accuracy	±0.1°C	±0.1°C
Uniformity	±0.5°C	±0.5°C
Exterior dimensions (W x D x H)	19 x 17.5 x 19.5 in. (48.3 x 44.5 x 49.5 cm)	19 x 17.5 x 19.5 in. (48.3 x 44.5 x 49.5 cm)
Chamber dimensions (W x D x H)	14.5 x 11 x 13.5 in. (36.8 x 27.9 x 34.3 cm)	14.5 x 11 x 13.5 in. (36.8 x 27.9 x 34.3 cm)
Weight	59 lbs. (26.8 kg)	59 lbs. (26.8 kg)

### Ordering Information

Cat. No.	Description
H0600A	ProBlot 6 hybridization oven, 120V
H0600A-230V-EU	ProBlot 6 hybridization oven, 230V, EU and UK plug
H1200A	ProBlot 12 hybridization oven, 120V
H1200A-230V-EU	ProBlot 12 hybridization oven, 230V, EU and UK plug

### Accessories

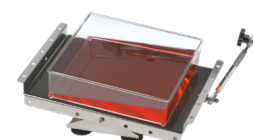
Cat. No.	Description
H1200-RA	Rocking platform with attachment hardware
H1212-40VA	Rotisserie, vertical, for 12 x 50 mL conical tubes
H1264-VA	Rotisserie, vertical, for 64 x 1.5 mL or 32 x 15 mL conical tubes
H1264-HA	Rotisserie, horizontal, for 64 x 1.5 mL or 32 x 15 mL conical tubes



ProBlot 6



ProBlot 12



Rocking platform  
(Cat. No. H1200-RA)

# Digital Shaking Incubator 211DS

A small footprint, compact, stackable design and expanded temperature range make the 211DS Shaking Incubator ideal for molecular biology and general use. Its integral orbital shaker makes it highly versatile.

- Integrated digital orbital shaker
- Exclusive SmartCheck™ temperature control system
- Broad temperature range to meet a wide variety of applications
- Stacking design saves space

## Specifications

Temperature range	Ambient, +5°C to 80°C (shaker off) Ambient, +10°C to 80°C (shaker on, the shaker adds heat to the system)
Shaker speed	20 to 400 rpm (±2 rpm)
Temperature uniformity	±0.5°C
Temperature accuracy	±0.1°C
Timer	0 to 99 min. or continuous
Shaker orbit	19 mm
Exterior dimensions (D x W x H)	21.75 x 16.75 x 23.125 in. (55.25 x 42.55 x 58.74 cm)
Chamber dimensions (D x W x H)	16.25 x 11.5 x 14.94 in. (41.28 x 29.21 x 37.95 cm)
Chamber volume	1.7 cu ft (49L)
Weight	83 lbs. (37.7 kg)

## Ordering Information

Cat. No.	Description
I-5211-DS	211DS 49L Shaking Incubator, 120V
I-5211-DS-220V	211DS 49L Shaking Incubator, 230V, EU and UK plug

## Accessories

Cat. No.	Description
I-5211-SA	Stacking adapter, required when stacking incubators
I-5230	Flask clamp platform, pre-drilled (see clamps below)
I-5231	Flat platform with non-slip rubber mat (30 x 30 cm)
I-5231-D	Double flat platform with non-slip rubber mat
S2031-13	Universal spring loaded clamp platform for flasks, bottles, etc.
S2040-85	Flask clamp, 125 mL (max. 16)
S2040-99	Flask clamp, 250 mL (max. 9)
S2040-09	Flask clamp, 500 mL (max. 5)
S2040-01	Flask clamp, 1,000 mL (max. 4)



Universal spring loaded clamp platform (Cat. No. S2031-13)



Flask clamps

# Digital Shaking Incubator 311DS

The 311DS is a high performance incubator with a built-in orbital shaker offers stable temperature conditions. A broad temperature range expands the use of this incubator to liquid cultures, washing blots, and other shaking applications requiring strict temperature control.

- ▶ Exclusive SmartCheck™ temperature control system
- ▶ Broad temperature range to meet a wide variety of applications
- ▶ Gasketed door with large, integral viewing area



## Specifications

Chamber temperature range	Ambient, +5°C to 80°C (shaker off) Ambient, +10°C to 80°C (shaker on)
Accuracy/uniformity	±0.3°C to ±0.5°C at 37°C
Temperature accuracy	±0.2°C
Shaker speed	20 to 300 rpm
Timer increments	30 seconds to 9 min. 59 seconds in 1-second steps 10.0 min. to 99 min. 50 seconds in 10-second increments
Shaker orbit	0.75 in. (19 mm)
Exterior dimensions (W x D x H)	22.6 x 21.4 x 25 in. (57.4 x 54.4 x 63.5 cm)
Chamber dimensions (D x W x H)	17.4 x 15.6 x 16 in. (44.2 x 39.6 x 40.6 cm)
Chamber volume	2.5 cu. ft. (71L)
Weight	140 lbs. (63.6 kg)

## Ordering Information

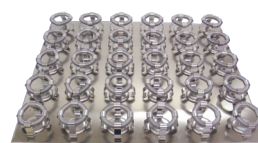
Cat. No.	Description
I-5311-DS	311DS 71L Shaking Incubator, 120V
I-5311-DS-230V	311DS 71L Shaking Incubator, 230V, EU and UK plug

## Accessories

Cat. No.	Description
I-5322	Additional shelf
I-5331	Flat platform with non-slip rubber mat (39 x 33 cm)
I-5330	Shaking platform pre-drilled for flask clamps (flask clamps sold separately, see the previous page)
S2040-02	Clamp for 2L Erlenmeyer flask
S2040-50	Clamp for 50 mL Erlenmeyer flask
S2040-25	Clamp for 25 mL Erlenmeyer flask
I-5330-2000	Platform with 4 x 2L flask clamps
I-5330-1000	Platform with 6 x 1L flask clamps
I-5330-500	Platform with 8 x 500 mL flask clamps
I-5330-250	Platform with 12 x 250 mL flask clamps
I-5330-125	Platform with 20 x 125 mL flask clamps
I-5330-50	Platform with 30 x 50 mL flask clamps
I-5330-RH15	Rack holder, fits I-5330, holds 1 x 15 mL test tube rack (Cat. No. K566)
I-5330-RH50	Rack holder, fits I-5330, holds 1 x 50 mL test tube rack (Cat. No. K568)



Platform with 6 x 1L flask clamps (Cat. No. I-5330-1000)



Platform with 30 x 50 mL flask clamps (Cat. No. I-5330-50)



Rack holder (Cat. No. I-5330-RH15)

# Benchtop Shaking Incubator 222DS

The 222DS Benchtop Shaking Incubator from Labnet provides a small footprint with large performance, as well as unparalleled flexibility. The 222DS lab incubator lid has a low pivot point which provides a compact lab friendly shaking incubator sure to fit on the lab bench and under your shelves. The large assortment of accessories allows users the flexibility to use for many molecular biology applications. The included software, not required for use, allows monitoring of rpm and temperature throughout runs and saving data to a PC. The 222DS Benchtop Shaking Incubators provide uniform motion even under adverse conditions.

- Exceptional versatility
- Precise SmartCheck™ digital microprocessor temperature control
- Compact design allows unit to open under shelves
- Flexibility to control unit using keypad or software



## Specifications

Capacity	16 x 125 mL , 9 x 250 mL, 5 x 500 mL, 4 x 1,000 mL
Temperature range	Ambient, +5°C to 70°C in 0.1°C increments
Temperature accuracy	±0.5°C
Temperature stability	±0.5°C
Shaker	Circular, 19 mm orbit, 20 to 300 rpm
Timer	1 min. to 99 hrs. or continuous
Platform dimensions (W x D)	11.8 x 11.8 in. (30 x 30 cm)
Dimensions (W x D x H)	15 x 21 x 16 in. (37 x 53 x 40 cm)
Height with lid open	21.7 in. (55 cm)
Weight	45 lbs. (20.2 kg)

## Ordering Information

Cat. No.	Description
I-5222-DS	222DS Benchtop Shaking Incubator, 120V
I-5222-DS-230V	222DS Benchtop Shaking Incubator, 230V, EU and UK plug

## Accessories

Cat. No.	Description
I-5230	Shaking platform, predrilled
I-5230-DS	Universal platform, 11.8 x 11.8 in. (30 x 30 cm)
I-5220	Petri dish shelf
I-5240	Sticky mat, 150 x 150 x 3 mm
I-5250	Microtiter hotel for 3 x microplates stacked horizontally
I-5260	Combi tube holder, 6 x 15 or 50 mL tubes
I-2041-1000	Plastic flask clamp, 1,000 mL (max. 4)
I-2041-500	Plastic flask clamp, 500 mL (max. 5)
I-2041-250	Plastic flask clamp, 250 mL (max. 9)
I-2041-125	Plastic flask clamp, 125 mL (max. 16)



Plastic flask clamps

# Microtube Shaking Incubator

Labnet Microtube Shaking Incubator is a temperature controlled vortexer that uses peltier technology to rapidly heat and cool samples.

The combination of heating/cooling with mixing makes the Microtube Shaking Incubator ideal for many life science research applications including molecular biology, biochemistry, and clinical chemistry.

The compact footprint incorporates an intuitive control panel with a large color display, which allows users to easily program and view temperature, time, and speed settings. Designed to meet the high-pace demands of today's lab, the exceptional performance of this product makes it an essential part of your daily research.

- Small footprint
- 8 interchangeable blocks (sold separately) to accommodate various tube sizes
- Rapid cooling and heating
- Fine-tuned speed control from 300 to 1,500 rpm



## Specifications

Temperature setting range	0°C to 105°C
Temperature control range	Ambient -14°C to 100°C
Timer range	1 min. to 99 h 59 min.
Speed range	300 to 1,500 rpm
Mixing orbit	3 mm
Temperature control accuracy	±0.5°C
Temperature uniformity	±0.5°C
Heating time	6.5°C/min.
Cooling time	1.5°C/min.
Dimensions (W x D x H)	12.9 x 6.5 x 9.8 in. (33 x 16.6 x 24 cm)
Weight	18.75 lbs. (8.5 kg)

## Ordering Information

Cat. No.	Description
I-4001-HCS	Microtube Shaking Incubator, 120V
I-4002-HCS	Microtube Shaking Incubator, 230V

## Accessories

Cat. No.	Description
I-4000-A	Block A, 40 x 1.5 mL
I-4000-B	Block B, 54 x 0.5 mL
I-4000-C	Block C, 96 x 0.2 mL
I-4000-D	Block D, 24 x 15 mm
I-4000-E	Block E, water bath (115 x 73 x 38 mm)
I-4000-G	Block G, 26 x 0.5 mL and 24 x 1.5 mL
I-4000-H	Block H, 40 x 2.0 mL
I-4000-J	Block J, 96-well ELISA microplate



# Vortemp™ 56 Shaking Incubator

Designed for simultaneous heating and mixing of small samples, the VorTemp 56 Shaking Incubator features interchangeable platforms for microtubes or microplates. Both platforms are supplied with the unit. Temperature in the VorTemp 56 Shaking Incubator is adjustable over a broad range, making the unit useful for a variety of applications, including bacterial cultures in microtubes and microplates. Mechanical convection provides a uniform and stable environment within the chamber. The VorTemp 56 shaking incubator may also be used in the cold room for sub-ambient applications.



- Shake and incubate samples simultaneously
- Supplied with interchangeable platforms for microtubes or microplates
- Broad temperature and speed range
- Intelligent control with digital LED display
- Shaking feature can be turned off, allowing the unit to be used as a static incubator

## Specifications

Capacity	56 x 1.5 or 2.0 mL microtubes, 4 standard or 2 deep well microplates
Temperature range	Ambient, +5°C to 99°C
Temperature uniformity	±0.5°C
Speed range	100 to 1,200 rpm, 1,400 rpm (only at 60Hz)
Motion, orbit	Circular, 3 mm
Timer	1 to 99 min. or continuous
Dimensions (W x D x H)	10 x 13 x 9 in. (26.5 x 32.5 x 22.5 cm)
Weight	24 lbs. (11 kg)

## Ordering Information

Cat. No.	Description
S2056A	Vortemp 56 Shaking incubator for microtubes and microplates, 120V
S2056A-220	Vortemp 56 Shaking incubator for microtubes and microplates, 230V, EU and UK plug

## Accessories

Cat. No.	Description	Qty/Cs
S2056-R	1.5/2.0 mL platform/workstation for microcentrifuge tubes	1
S2056-Q	Microplate platform	1
C1205	Individual adapters for 0.5/0.6 mL tubes	6
C1206	Individual adapters for 0.4 mL tubes	6
C1222	Individual adapters for 0.2 mL thermal cycling tubes	6

# Vortemp™ 1550 Shaking Incubator

Designed for simultaneous heating and mixing of small samples, the VorTemp 1550 Shaking Incubators are supplied with interchangeable platforms for standard 15 mL and 50 mL conical tubes. Maximum capacity is 8 x 50 mL or 18 x 15 mL. Temperature in the VorTemp 1550 is adjustable over a broad range, making the unit useful for a variety of applications, including bacterial cultures and digestions. Mechanical convection provides a uniform and stable environment within the chamber. The VorTemp 1550 may also be used in the cold room for sub-ambient applications.

- Shake and incubate samples simultaneously
- Supplied with interchangeable platforms for 15 and 50 mL tubes
- Broad temperature and speed range
- Intelligent control with digital LED display



## Specifications

Capacity	8 x 50 mL tubes or 18 x 15 mL tubes
Temperature range	Ambient, +5°C to 99.5°C
Temperature uniformity	±0.5°C
Speed range	100 to 900 rpm
Motion, orbit	Circular, 3 mm
Timer	From 30 sec. to 99 min. 50 sec. in 10 sec. steps (under 10 min. in 1 sec. steps) or continuous
Dimensions	10 x 13 x 12 in. (26.5 x 32.5 x 30.5 cm)
Weight	25 lbs. (11.5 kg)

## Ordering Information

Cat. No.	Description
S2050A	Vortemp 1550 Shaking incubator for 15 and 50 mL tubes, 120V
S2050A-230V	Vortemp 1550 Shaking incubator for 15 and 50 mL tubes, 230V, EU and UK plug

## Accessories

Cat. No.	Description	Qty/Pk
S2056-R	1.5/2.0 mL platform/workstation for microcentrifuge tubes	1
S2056-Q	Microplate platform	1
C0200-17A	Adapters for 5 mL (13 x 75 mm) and 7 mL (13 x 100 mm) tubes	6



# Mini Incubator

Labnet's Mini Incubator is designed for personal use, small laboratories, and classrooms. This compact unit features a broad temperature range to meet a variety of small sample applications.

Multiple heating elements provide even heating and uniformity, and the hydraulic thermostat ensures temperature stability within the chamber. A thermometer port in the top of the unit allows the user to monitor temperatures. The large window in the door gives a clear view of the contents which can include up to 48 Petri dishes or 28 standard microplates. Shelves can be placed at two points within the corrosion resistant chamber. A cord port allows small mixers to be placed in the incubator.

- Ideal for personal use, small laboratories, and classrooms
- Broad temperature range
- Rear cord port allows for use of small mixers inside
- Includes one shelf, which can be placed at two points within the corrosion-resistant chamber



## Specifications

Capacity	0.375 cu. ft. (9.2 liters)
Temperature range	Ambient, +5°C to 70°C
Controls	Analog, hydraulic
Exterior dimensions (W x D x H)	11.2 x 11 x 13.2 in. (28.5 x 28 x 33.5 cm)
Chamber dimensions (W x D x H)	19 x 7.9 x 7.9 in. (23 x 20 x 20 cm)
Weight	18.4 lbs. (8.3 kg)

## Ordering Information

Cat. No.	Description
I5110A	Mini Incubator, 120V
I5110A-230V	Mini Incubator, 230V
I5110A-MLR	Mini Incubator with Mini Lab Roller and rotisseries for 1.5, 15, and 50 mL tubes, 120V
I5110A-MLR-230E	Mini Incubator with Mini Lab Roller and rotisseries for 1.5, 15, and 50 mL tubes, 230V, EU plug

## Accessories

Cat. No.	Description
I5110-SHELF	Additional shelf, 8.66 x 7 in. (22 x 18 cm)
W0020-110C	Non-toxic safety thermometer for -20°C to 110°C, with 1 resolution, 305 mm long, 76 mm immersion



Mini Incubator with Mini Lab Roller

# AccuBlock™ Digital Dry Baths

The Labnet AccuBlock Digital Dry Baths are available in single, dual, and four block configurations and provide a broad temperature range up to 150°C, which makes them useful for a variety of applications in molecular biology, histology, clinical, environmental, and industrial laboratories.

They have been designed to incorporate the best combination of features including dual display and an external temperature probe that gives life science researchers the confidence and efficiency they need when working with precious samples.

- ▶ Single, dual, and four block capacity to maximize sample processing (blocks sold separately)
- ▶ Dual display allows for easy monitoring of temperature and time
- ▶ USB connectivity enables traceability of data
- ▶ Molded block chamber provides excellent temperature uniformity



## Specifications

Temperature range	Ambient, +5°C to 150°C
Temperature display	4-digit LED, accurate to 0.1°C
Temperature uniformity	±0.2°C (at 37°C in block)
Temperature accuracy	±0.3°C
Temperature control	User calibratable microprocessor
Timer	1 min. to 99 h 59 min. or continuous in 1-min. increments
Operating altitude	Up to 2,000 meters
Dimensions (W x D x H)	
Single block	8.3 x 12.4 x 4.7 in. (21 x 31.5 x 12 cm)
Dual block	8.3 x 12.4 x 4.7 in. (21 x 31.5 x 12 cm)
Four block	8.3 x 16.3 x 4.7 in. (21 x 41.5 x 12 cm)
Weight	
Single block	7.0 lbs. (3.2 kg)
Dual block	7.0 lbs. (3.2 kg)
Four block	9.6 lbs. (4.4 kg)

## Ordering Information

Cat. No.	Description
D1301	Digital dry bath, single block, 120V
D1301-230V	Digital dry bath, single block, 230V
D1302	Digital dry bath, dual block, 120V
D1302-230V	Digital dry bath, dual block, 230V
D1304	Digital dry bath, four block, 120V
D1304-230V	Digital dry bath, four block, 230V

## Accessories

Cat. No.	Description
D1101	Solid block for machining (no holes)
D1102	Single block, 48 x 0.2 mL PCR tubes or 6 x 0.2 mL
D1102A	Single block, 24 x 2.0 mL tubes
D1105	Single block, 24 x 0.5 mL tubes
D1105A	Single block, 24 x 1.5 mL tubes
D1106	Single block, 35 x 6 mm tubes
D1110	Single block, 20 x 10 mm tubes
D1112	Single block, 20 x 12 mm tubes
D1113	Single block, 20 x 13 mm tubes
D1115-TALL	Single block, 12 x 15 mL centrifuge tubes
D1116	Single block, 12 x 15 or 16 mm tubes
D1117	Single block, 12 x 17 mm tubes
D1120	Single block, 6 x 20 mm tubes
D1125	Single block, 6 x 25 mm tubes
D1150-TALL	Single block, 5 x 50 mL conical tubes
D1196-PCR	Single block, 96-well PCR plate, skirted or non-skirted
D1296	Dual block, 96-well microplate or 4 slides
D1296-PCR	Dual block, 96-well PCR plate, skirted or non-skirted
D12384	Dual block, 384-well PCR plate (for dual block unit only)
D1100-PS	Pop stopper for D1102, D1102A, D1105, D1105A blocks
D1105A-RACK	AccuRack™ tube rack for 20 x 1.5 mL tubes, compatible with the D1105A block
D1300-PROBE	Dry bath external temperature sensor



Solid and single blocks



AccuRack™ tube rack  
(Cat. No. D1105A-RACK)

# AccuBlock™ Mini Compact Dry Bath

The AccuBlock Mini Compact Dry Bath combines digital control, a fast heating microtube block and a convenient AccuRack™ transfer system, all in an ultra-compact footprint. With a temperature range to 100°C which can be set in increments of 0.1°C, Labnet's AccuBlock Mini is suitable for a range of uses in life science, molecular biology, environmental, and industrial laboratories and a variety of applications including incubation, enzyme reactions, and immunoassays. The small form factor allows it to find a place on even the most crowded laboratory benchtop, and it is easy to transport.

The packaging includes the 12 x 1.5 mL block as well as the convenient AccuRack, which is designed to allow quick loading or unloading of all sample tubes simultaneously. The rack fits onto the top of the unit and its self-standing design allows it to hold samples when they are being prepped or loaded.

- ▶ Accurate temperature control to 100°C
- ▶ Precision LCD digital display
- ▶ 12 x 1.5 mL aluminum block included
- ▶ Compact and convenient
- ▶ AccuRack transfer rack included



## Specifications

Block	Anodized aluminum, 12 x 1.5 mL microtubes
Temperature range	Ambient, +5°C to 100°C
Temperature increments	0.1°C
Temperature uniformity	0.8°C
Temperature accuracy	0.8°C
Timer	0 to 19 h 59 min. or continuous
Dimensions (W x D x H)	5.5 x 4.8 x 2.4 in. (14 x 12 x 6 cm)
Weight	2.2 lbs. (1 kg)

## Ordering Information

Cat. No.	Description
D0100	AccuBlock Mini Digital Dry Bath, 12 x 1.5 mL microtubes, 120V
D0100-230V	AccuBlock Mini Digital Dry Bath, 12 x 1.5 mL microtubes, 230V

# AccuPlate™ Digital Hot Plate Stirrers

Labnet's AccuPlate Digital Hot Plate Stirrers are designed with a 7" x 7" ceramic-coated top plate that provides an even heating surface with a maximum temperature rating of 550°C. Stirring models have a speed range between 100-1,500 rpm. To allow for accurate programming, these units have actual temperature and speed ranges printed on the control panel. The digital hot plate stirrers are equipped with a 5" x 7" fully ceramic top plate that is extremely durable, easy to clean and is highly resistant to chemical attack. In addition, the ceramic plates can reach a maximum temperature of 550°C. The white colored surface makes it easy to view color changes in applications such as titrations. Stirring models have a speed range between 60 to 1,150 rpm.

- Precise liquid temperatures and stirring speeds
- Digital display and safety indicators
- Angled front panel and large knobs
- Optional external temperature controller



## Specifications

	D0400	D0410	D0420
Temperature range	5 to 550°C	-	5 to 550°C
Temperature accuracy	±2.0°C	-	±2.0°C
Speed range	-	60 to 1,150 rpm	60 to 1,150 rpm
Speed accuracy	-	±5%	±5%
Top plate material	Ceramic	Ceramic	Ceramic
Top plate size	5 x 7 in. (12.7 x 17.8 cm)	5 x 7 in. (12.7 x 17.8 cm)	5 x 7 in. (12.7 x 17.8 cm)
Dimensions	10.8 x 7.8 x 4.3 in. (27.5 x 19.7 x 10.9 cm)	10.8 x 7.8 x 4.3 in. (27.5 x 19.7 x 10.9 cm)	10.8 x 7.8 x 4.3 in. (27.5 x 19.7 x 10.9 cm)
Weight	5.5 lbs. (2.5 kg)	6.2 lbs. (2.8 kg)	6.2 lbs. (2.8 kg)

## Ordering Information

Cat. No.	Description
D0400	AccuPlate Hot Plate, 120V
D0400-230V	AccuPlate Hot Plate, 230V
D0410	AccuPlate Stirrer, 120V
D0410-230V	AccuPlate Stirrer, 230V
D0420	AccuPlate Hot Plate Stirrer, 120V
D0420-230V	AccuPlate Hot Plate Stirrer, 230V

## Accessories

Cat. No.	Description
D0461	Kit includes D0462, D0466, and stir bar retriever
D0462	External temperature probe (for use with D0400 and D0420)
D0463	PTFE coated magnetic stir bar, 0.4 x 1 in. (1 x 2.5 cm)
D0464	Boss head clamp for holding D0465 at a 90° angle from D0466 (for use with D0400 and D0420)
D0465	Temperature probe (D0462) holding rod (for use with D0400 and D0420)
D0466	Vertical support rod, 2 x 22.8 cm rods which can be connected



Boss head clamp  
(Cat. No. D0464)



Temperature probe holding rod  
(Cat. No. D0465)

# Mini Water Bath

The Mini Water Bath has a 6 liter capacity to accommodate test tube racks or up to three 250 mL flasks. A powerful 550W heater allows for quick temperature adjustment. A hydraulic thermostat ensures accurate temperature control. The seamless, stainless steel chamber is corrosion-resistant and easy to clean. A stainless steel gable cover helps to retain heat in the bath and control evaporation. A clip is included for suspending a thermometer in the bath.

- Ideal for small laboratories and classrooms
- Broad temperature range
- Stainless steel cover included with thermometer opening
- 6 liter capacity can accommodate test tube racks or up to three 250 mL flasks



## Specifications

Capacity	6 liters
Temperature range	Ambient, +5°C to 100°C
Controls	Analog, hydraulic
Heater	550W
Exterior dimensions (W x D x H)	14 x 11 x 13 in. (36 x 27.5 x 32 cm)
Chamber dimensions (W x D x H)	13 x 6.7 x 6.9 in. (32 x 17 x 17.5 cm)
Weight	17 lbs. (7.7 kg)

## Ordering Information

Cat. No.	Description
W1106A	Mini Water Bath 6L with stainless steel gable cover and thermometer clip, 120V
W1106A-230V	Mini Water Bath 6L with stainless steel gable cover and thermometer clip, 230V

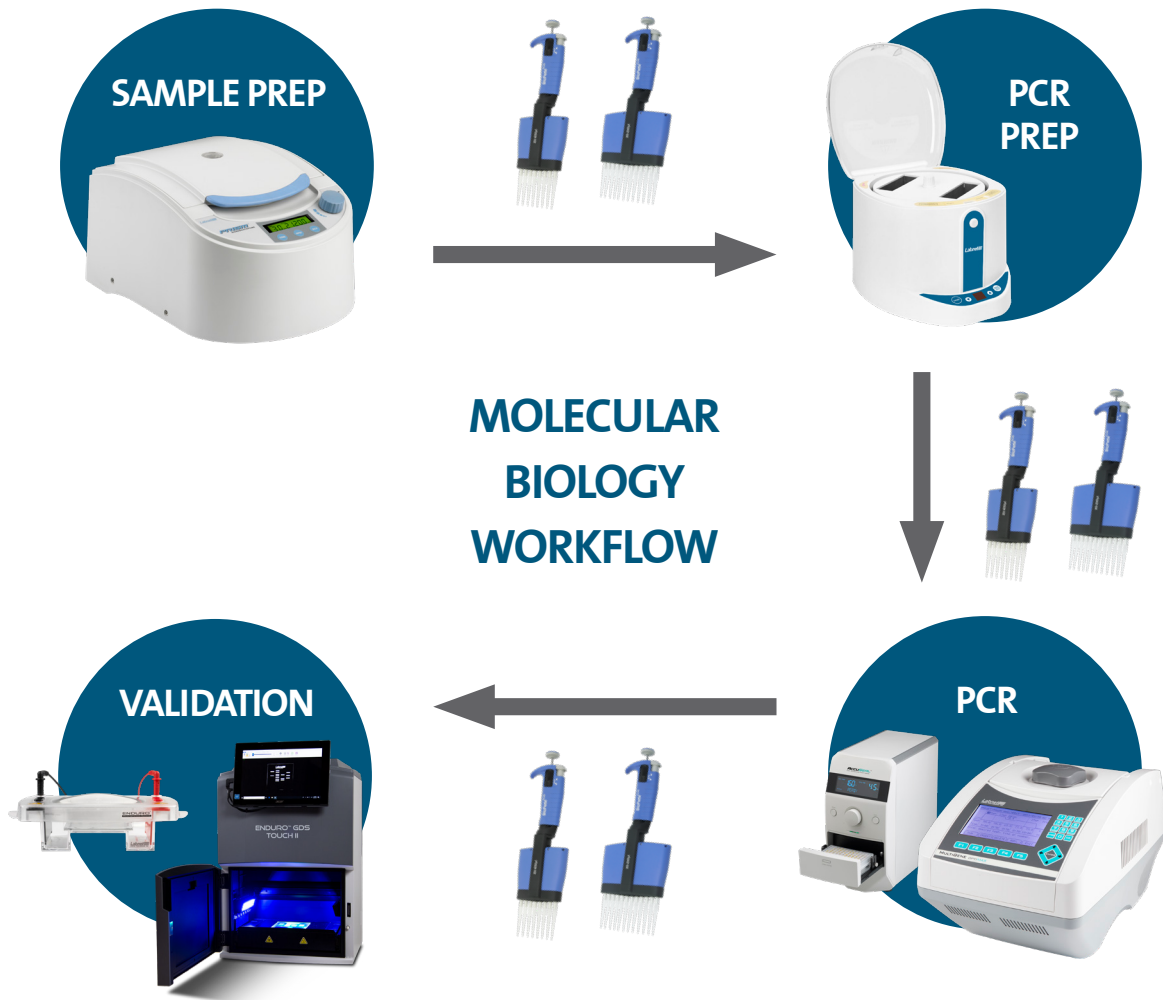
## Accessories

Cat. No.	Description
W0020-110C	Non-toxic safety thermometer for -20°C to 110°C, with 1 resolution, 12 in. (305 mm) long, 3 in. (76 mm) immersion

# Molecular Biology and Electrophoresis

## Molecular Biology and Electrophoresis Workflow

Labnet has a complete offering of general laboratory equipment for the Molecular Biology Workflow that includes microtube and Plate Spinner Centrifuges for PCR sample preparation, liquid handling for transfer of valuable samples, thermal cycler and plate sealer for running PCR, and electrophoresis and gel documentation systems for validating the results. Each of these components were designed for optimal performance and ease of use. For additional information please visit [www.labnetlink.com](http://www.labnetlink.com) or call Labnet Customer Service.



### Molecular Biology Workflow

- ▶ **Sample Prep:** Prism™ High Speed Microcentrifuge (Cat. No. C2500), page 6
- ▶ **PCR Prep:** MPS 1001 Mini Plate Spinner (Cat. No. C1001), page 2
- ▶ **PCR:** MultiGene™ OptiMax Thermal Cycler (Cat. No. TC9610), page 30 and AccuSeal™ Semi-automated Plate Sealer (Cat. No. PS1000), page 31
- ▶ **Validation:** Enduro™ GDS II Gel Documentation System (Cat. No. GDST2-1302), page 43 and Enduro Horizontal Gel Box (Cat. No. E1010-10), page 33
- ▶ **In between steps:** BioPette Plus Autoclavable Pipettors (Cat. Nos. P4808-10, P4808-50, P4808-200, P4808-300, P4812-10, P4812-50, P4812-200, P4812-300), page 9

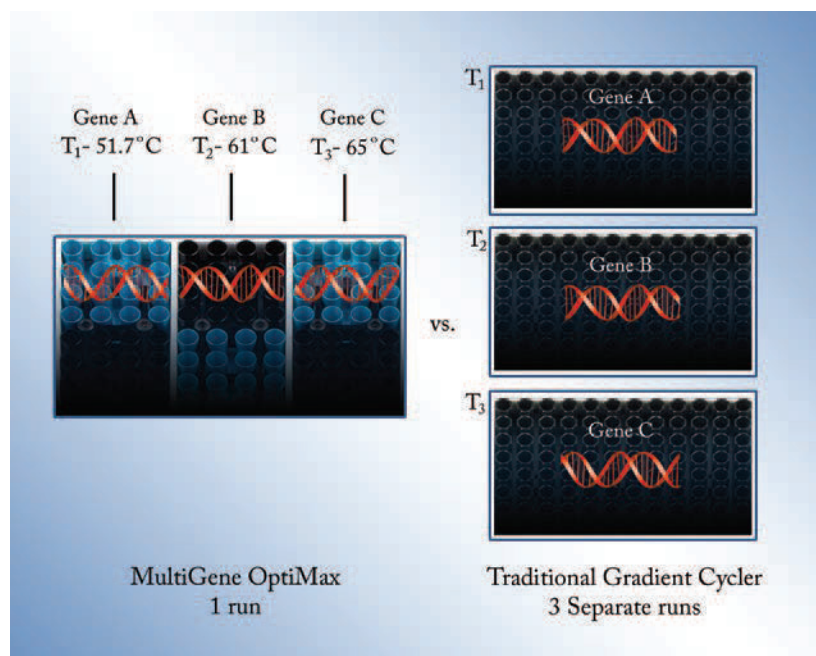
# MultiGene™ OptiMax Thermal Cycler

The MultiGene OptiMax Thermal Cycler delivers advanced speed and features while providing premium performance at an affordable price. This simple to program unit is compact in design and built to perform. Programming is intuitive with the large display and multiple pre-programmed templates supplied with the unit. The OptiMax comes with standard built in 2-step, temperature optimization, touchdown and time increment protocols that are easy to adjust to meet your cycling needs. You can select lid temperature or turn it off depending on your needs. The faster ramp rates allow more work to be done in a work day.

Additionally, The MultiGene OptiMax employs a new protocol optimization process improving on older gradient features. This “Better than Gradient” capability allows users to select up to 6 distinct annealing temperatures to be run simultaneously. This is ideal for method optimization as well as applications such as genotyping.

The MultiGene OptiMax is ideal for streamlining the genotyping workflow. A typical genotyping experiment requires the ability to evaluate multiple transgenes in a single animal. In an existing gradient thermal cycler verifying the integrity of your line requires three separate runs/experiments to achieve what the MultiGene OptiMax allows in one method. This is achieved by assigning the appropriate annealing temperatures for each gene in each peltier block (up to 6 different ones) and running that method. Results have confirmed that the data generated in the MultiGene OptiMax were comparable to running 3 individual runs/experiments, thereby saving time and reagents and making for a greater efficiency in the workflow.

The 6 distinctive blue and black peltier elements on the 96-well block can each be set to a unique and distinctive annealing temperature in your single method.



Download a copy of the application note “Streamlining the Genotyping Workflow with the MultiGene OptiMax” at [www.labnetlink.com](http://www.labnetlink.com).



## Specifications

Capacity	0.2 mL x 96 tubes
Sample volume range	5-100 µL
Temperature range	4°C to 99.9°C
Temperature control	Calculated or block
Temperature accuracy	±0.5°C (at 30°C to 99.9°C)
Temperature uniformity	±0.5°C
Gradient temperature	30°C to 99°C (max. temp. difference: 24°C)
Orientation	6-segment block each 4 x 4 wells in size
Max. lid temperature	60°C to 65°C/100°C to 115°C
Max. temp. increment/ decrement rate	5°C/3°C
Display	LCD
Protocol capacity	200 sets
Temp. increments/decrements	Yes
Time increments/decrements	Yes
User program folders	50 sets
Password protected programs	Yes
Dimensions (W x D x H)	9.5 x 9.8 x 16.5 in. (24 x 25 x 42 cm)
Weight	19.8 lbs. (9 kg)
Electrical	100 to 240V AC, 50/60 Hz, 750VA
Warranty	3 Years



## Ordering Information

Cat. No.	Description
TC9610	MultiGene OptiMax with 96-well block, 120V
TC9610-230	MultiGene OptiMax with 96-well block, 230V

## Accessories

Cat. No.	Description	Qty/Pk	Pk/Cs
TC96-CM-10	Compression mat, silicone	10	1
TC020-02-C	Tubes with domed caps, 0.2 mL, clear	1,000	1
TC96-NS-50	96-well microplate, polypropylene, no skirt	100	1
TC96-TT	Thermal sealing tape for 96-well microplates	100	5

# AccuSeal™ Semi-automated Plate Sealer

Labnet's AccuSeal Semi-automated Plate Sealer is ideal for the low to medium throughput laboratory that requires uniform and consistent sealing of microplates. Offering complete versatility, the AccuSeal will accept a full range of plates for PCR, assay or storage applications, and can be used for standard height to deep well plates. Operation is easy. Sealing parameters are set and displayed via the user-friendly control panel, and the sealing operation is automated to generate consistent results.

## Controls and Operation

The AccuSeal's control system allows optimal settings for all types of plates and sealing material. Sealing time (in 0.1 second increments), and sealing temperature (in 1.0°C increments) can be accurately set using the control knob.

Operation is simple: Place a microplate with a sealing film onto the drawer. Press the "SEAL" button, and the motorized drawer will automatically close, the heated sealing platen will press down on the seal, and then the drawer will open to present the sealed plate.

## Versatility and Convenience

Labnet's AccuSeal can accept a variety of plate heights – the AccuSeal adapter is used for assay plates and PCR plates. The motorized heated platen adjusts automatically for different height plates, and provides uniform pressure to ensure a quality seal.



## Specifications

Compatible plate types	Standard assay plates, deep well storage plates, PCR plates: skirted, semi-skirted, non-skirted
Maximum plate height	1.77 in. (4.5 cm)
Compatible plate materials	PP (Polypropylene), PS (Polystyrene)
Sealing temperature	Off, 100°C to 190°C (increments of 1.0°C)
Temperature accuracy	±1.0°C
Temperature uniformity	±1.0°C
Sealing time	0.5 to 10 sec. (increments of 0.1 sec.)
Dimensions (W x D x H)	6.75 x 12.75 x 14.25 in. (17.1 x 32.4 x 36.2 cm)
Weight	27 lbs. (12 kg)



## Ordering Information

Cat. No.	Description
PS1000	AccuSeal semi-automated plate sealer, includes adapters for standard and deep well microplates, 120V
PS1000-230V	AccuSeal semi-automated plate sealer, includes adapters for standard and deep well microplates, 230V, EU and UK plug

## Accessories

Cat. No.	Description
PS1000-PCR	AccuSeal adapter for sealing assay plates and PCR plates
PS1000-ADAPT	AccuSeal adapter for sealing assay plates and plates needing more support

## AccuSeal™ Heat Sealing Films

Cat. No.	Description	Films/Unit	Units/Cs
PS1000-GP300	Paper backed general purpose film is easy to use, peelable, and good for low temperature compound storage and PCR plates.	100	1
PS1000-100	Clear polyester backed film forms a weld seal to PP microplates. Good optical characteristics make it suitable for QPCR.	100	5
PS1000-150	Clear polyester backed film forms a peelable seal to PP, PS, and COC microplates. Good optical characteristics make it suitable for QPCR.	100	5
PS1000-200	Peelable film is ideal for PP and COC microplates. It can be peeled directly from the freezer. Provides a good barrier resistance to aqueous solutions and moderate resistance to solvents at room temperature.	100	5
PS1000-400	Peelable film good for PP and COC microplates. Can be peeled directly from the freezer. Ideal for low and room temperature compound storage. Forms a weld seal to PE plates. Good barrier resistance to aqueous solutions and solvents especially DMSO at room temperature or below.	100	5
PS1000-300	Forms a weld seal to PE plates. Good for low temperature compound storage and PCR. Aluminum foil film ideal for use with PP plates. It is a very strong pierce seal that provides a high degree of sample protection and good solvent resistance to DMSO when stored at room temperature or below.	100	5



Recommended sealing temperature and time for all PP microplates is 175°C and 3 seconds. Time and temperature can vary depending upon combination of film and microplates being utilized.

# Enduro™ Horizontal Gel Boxes

The Enduro Horizontal Gel Boxes have been designed with safety and ease of use in mind. Constructed of quality materials, they stand up to everyday use and provide a long, trouble-free service life.

The gel boxes are molded from UV transparent acrylic for leakproof performance. Cassettes enclose the electrodes to protect them from breakage and allow for easy cleaning and replacement.

Rubber casting gates fit easily onto the gel trays for tape-free gel casting. Positioning slots on the sides of the trays hold combs in place while pouring gels. The supplied combs are 1.5 mm thick and are adjustable to control well depth. Each gel tray is supplied with a Wellcomb Mat that can be placed underneath to aid in visualizing wells when loading. The domed lid and drip ring prevent condensation from falling onto the gel.

The Enduro line includes a full range of sizes, from a compact mini system to a large system that accommodates as many as 450 samples. Additional gel trays and different sizes of combs are available as well as Enduro molecular weight markers. Bicaster and Tricaster models provide casting trays for multiple sized gels in a single package.



## Ordering Information

Cat. No.	Description	Gel (W x L)	Unit (W x D x H)	Buffer Volume (mL)	Max. Sample Capacity	Supplied Combs	Supplied Casting Trays (cm)
E1007-7	7.7	2.75 x 2.75 in. (7 x 7 cm)	3.55 x 8.27 x 3.55 in. (9 x 21 x 9 cm)	225	32	8 tooth (2)	–
E1007-10	7.10	2.75 x 3.94 in. (7 x 10 cm)	3.55 x 8.27 x 3.55 in. (9 x 21 x 9 cm)	225	64	8 tooth (3)	–
E1010-10	10.10	3.94 x 3.94 in. (10 x 10 cm)	4.92 x 8.66 x 3.55 in. (12.5 x 22 x 9 cm)	300	100	10* tooth (2)	–
E1015-10	15.10	5.9 x 3.94 in. (15 x 10 cm)	6.89 x 10.43 x 3.55 in. (17.5 x 26.5 x 9 cm)	500	140	16* tooth (1) 20 tooth (1)	–
E1015-15	15.15	5.9 x 5.9 in. (15 x 15 cm)	6.89 x 10.43 x 3.55 in. (17.5 x 26.5 x 9 cm)	500	210	16* tooth (1) 28* tooth (1) 20 tooth (1)	–
E1020-20	20.20	7.9 x 7.9 in. (20 x 20 cm)	9 x 15.55 x 3.55 in. (23 x 39.5 x 9 cm)	1,200	450	20 tooth* (2) 40 tooth* (2)	–
E1010-9611	96	3.94 x 4.73 in. (10 x 12 cm)	4.92 x 8.66 x 3.55 in. (12.5 x 22 x 9 cm)	300	96 plus	96-well 1 mm	–
E1007-BI	7 BiCaster	2.75 x 3.94 in. (7 x 10 cm)	3.55 x 8.27 x 3.55 in. (9 x 21 x 9 cm)	225	64	8 tooth (3)	7 x 7, 7 x 10
E1010-BI	10 BiCaster	5.9 x 3.94 in. (15 x 10 cm)	6.89 x 10.43 x 3.55 in. (17.5 x 26.5 x 9 cm)	500	140	16* tooth (1) 20 tooth (1)	10 x 7, 10 x 10
E1015-BI	15 BiCaster	5.9 x 5.9 in. (15 x 15 cm)	6.89 x 10.43 x 3.55 in. w(17.5 x 26.5 x 9 cm)	500	210	16* tooth (1) 28* tooth (1)	15 x 7, 15 x 10, 15 x 15
E1020-BI	20 BiCaster	7.9 x 7.9 in. (20 x 20 cm)	9 x 15.55 x 3.55 in. (23 x 39.5 x 9 cm)	1,200	450	20 tooth* (2) 40 tooth* (2)	20 x 10, 20 x 20

# Enduro™ Gel XL – A Complete Electrophoresis System

The compact design of Enduro Gel XL results in a much smaller footprint than that of traditional gel boxes and power supplies. The 150V power supply connects directly into the gel box, eliminating tangled leads. Casting gels is quick and easy – place the gel tray in the stand, slide the comb into the slots, and pour. Combs are multi-channel compatible and gel trays are UV-transparent.

The molded gel tank provides leak-proof performance while the vented lid aids in dispersing heat. For safety, a magnetic sensor recognizes the presence or absence of the lid and allows current to flow accordingly. Operating parameters are set digitally, including amperage and voltage with automatic crossover. A run can be paused at any time and the parameters changed. A micro casting set for four 6 x 6 cm gels is available separately.



## Specifications

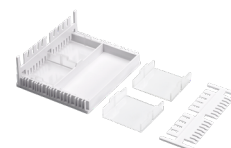
Gel capacity	1 large (12.5 x 12 cm), 2 small (12.5 x 6 cm), 4 micro (6 x 6 cm)
Sample capacity	112 samples (4 combs, 26 samples each)
Buffer capacity	300 mL
Output voltage	10 to 150V, constant peak voltage of 150V
Output amperage	10 to 400 mA
Timer	99 hours 59 min. and continuous
Program memory	Last used V and T
Dimensions (W x D x H)	9.7 x 3.0 x 2.5 in. (24.5 x 17.0 x 6.2 cm)

## Ordering Information

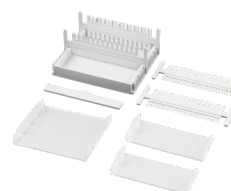
Cat. No.	Description
E0160	Enduro Gel XL, with standard casting set (E0168), gel tank with safety lid and power supply, 120V, US plug
E0160-230V	Enduro Gel XL, with standard casting set (E0168), gel tank with safety lid and power supply, 230V, EU plug
E0160-230V-UK	Enduro Gel XL, with standard casting set (E0168), gel tank with safety lid and power supply, 230V, UK plug

## Accessories

Cat. No.	Description	Qty/Pk
E0161	UV Transmittant casting tray, 12.5 x 12 cm	2
E0162	UV Transmittant casting tray, 12.5 x 6 cm	2
E0163	UV Transmittant casting tray, 6 x 6 cm	4
E0164	Reversible tooth combs, 1 mm thick 14/28	2
E0165	Reversible tooth combs, 1 mm thick 5/8	2
E0166	Micro casting set, includes 4 UV Transmittant casting trays (6 x 6 cm), 2 reversible tooth combs (1 mm thick 5/8), and a casting stand with divider	1
E0167	Casting stand with divider	1
E0168	Standard casting set, includes 1 UV Transmittant casting tray (12.5 x 12 cm) 2 UV Transmittant casting trays (12.5 x 6 cm), 4 reversible tooth combs (1 mm thick 14/28), and a casting stand with divider	1



Micro casting set  
(Cat. No. E0166)



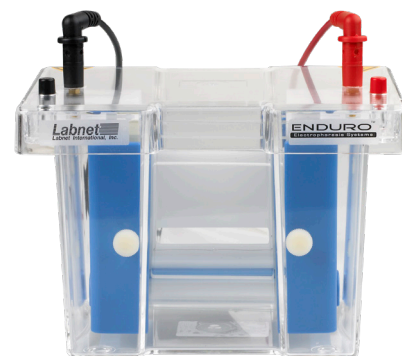
Standard casting set  
(Cat. No. E0168)

# Enduro™ VE10 Vertical Gel System

Labnet's Enduro modular mini Vertical Gel System for protein electrophoresis is ideal for screening new samples and evaluating sample preparation conditions. It is a great research tool that can run a maximum of 4 gels within an hour. These gels can be either handcast or precast. The same system allows for either PAGE or Electroblotting to be carried out in the same tank by changing the insert.

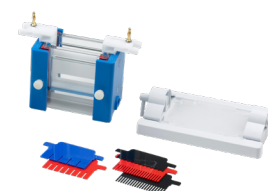
Each VE10 Vertical Gel System can accommodate up to 4 handcast gels and 2 commercial precast gels to provide complete flexibility for individual research needs. The unique sliding clamp technology within the PAGE insert facilitates fast, intuitive leak-free casting. Reversible combs also serve as loading indicators to aid pipet-well alignment, preventing sample loading errors. Insert your comb into a freshly poured gel which is allowed to set before inverting the comb to use a loading template that sits conveniently above the newly formed sample wells.

With easy set up and reliable performance, the VE10 Vertical systems are perfect for today's laboratories where the ability to generate reproducible results quickly is of prime importance.



## Specifications

Number of gels (handcast)	1 to 4
Precast gel compatibility (Up to 2 Gels/Run)	Novex®, SERVAGel™, Thermo Precise, Pierce Protein Gel, Bio-Rad Mini PROTEAN® Precast gels.
Glass plate dimensions (W x H x D)	3.94 x 3.94 x 0.08 in. (10 x 10 x 0.2 cm)
Gel dimensions (W x H)	8 x 8.5 cm
Total buffer volume	250 to 1200 mL
Standard run time for SDS-page	1 to 2 hours at from 90-225V
Dimensions (W x D x H)	7.5 x 5.1 x 5.9 in. (19 x 13 x 15 cm)
Weight	4 lbs. (1.8 kg)



Enduro PAGE casting

## Ordering Information

Cat. No.	Description
E2010-PA	Enduro VE10 PAGE system, includes PAGE insert, buffer tank with leads and cooling pack
E2010-PBA	Enduro VE10 PAGE system with electroblotting module (E2010-BM + E2010-PA)
E2010-PC	Enduro PAGE casting system
E2010-BM	Enduro VE10 electroblotting module for use with VE10 vertical gel system, includes 4 cassettes and 8 fiber pads

Labnet offers a wide range of combs, spacers and other accessories for your electrophoresis needs. They are available at [www.labnetlink.com](http://www.labnetlink.com) or by requesting our Enduro Full Line electrophoresis catalog.

# Enduro™ VE20 Vertical Gel System

The Enduro VE20 is Labnet's large format vertical gel electrophoresis system. Designed to perform a variety of separations, including first and second-dimension SDS-PAGE, native, preparative, gradient, high-resolution nucleic acid electrophoresis and electroblotting, the VE20 is one of the most versatile large format vertical systems available.

The VE20 distinguishes itself in its flexibility of applications, ease of gel casting and set-up requiring only 4 screws to secure 4 (16 x 17.5 cm) gels. The VE20 vertical screw-clamp configuration distributes pressure evenly along the height of the gel rather than in the center to eliminate plate bowing and gel compression. The new configuration still maintains a leak-proof seal during casting; while the ergonomic wave-like design of the PAGE insert aids both handling and set up.

Whether it is running 2 or 4 gels, electroblotting or IEF using IPG strips, all of these techniques may be performed using the same base unit while retaining the benefits provided by large format electrophoresis, such as extended separation distances, greater sample throughput, and superior resolution. Whatever your large format gel requirements are, the VE20 can be made to meet them.



## Specifications

Number of gels	1 to 4
Total volume inner buffer chamber	640 mL
Total buffer volume for 2 gels	5.3L
Total buffer volume for 4 gels	4.8L
Plate dimensions (W x H x D)	7.88 x 7.87 x 0.16 in. (20 x 20 x 0.4 cm)
Standard spacer dimensions (W x H)	0.78 x 7.88 in. (2 x 20 cm)
IPG spacer dimensions (W x H)	0.24 x 7.88 in. (0.6 x 20 cm)
Std run time without cooling	4 to 5 hours
Std run time with cooling	3 to 4 hours
Dimensions (W x H x D)	11.8 x 10.6 x 7 in. (30 x 27 x 18 cm)
Weight	5.5 lbs. (2.5 kg)

## Ordering Information

Cat. No.	Description
E2020	Enduro VE20 Vertical Gel System includes glass plates, 2 x 24-well combs, cooling coil, and casting base
E2020-CU	Enduro VE20 Dual Casting System 2 sets of glass plates, 1 mm thick bonded spacers, 2 x 24-well 1 mm thick combs, cooling coil, dummy plate and caster with external casting

## Accessories

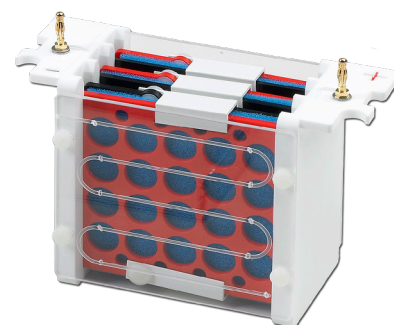
Cat. No.	Description
E2120-EC	Enduro VE20 external casting stand
E2120-CAST	Enduro VE20 casting base
E2120-PI	Enduro VE20 PAGE insert
E2120-CC	Enduro VE20 detachable cooling coil
E2120-RM	Enduro VE20 replacement rubber mats for 20 x 20 cm caster
E2120-MCB	Enduro VE20 maxi cooling block
E2120-CC	Enduro VE20 detachable cooling coil
E2120-LD	VE20 lid (no cables)

Labnet offers a wide range of combs, spacers and other accessories for your electrophoresis needs. They are available at [www.labnetlink.com](http://www.labnetlink.com) or by requesting our Enduro Full Line electrophoresis catalog.

# Enduro™ VE10 Blotter

This Enduro VE10 Blotter has a 4 mini gel (10 x 10 cm) capacity and can be purchased either as a stand-alone tank blotter or part of an integrated mini-gel/blotting system utilizing one shared tank.

This electroblotting system includes tank, blotting inserts, and 4 cassettes with fiber pads.



## Specifications

Number of gels (handcast)	1 to 4
Precast gel compatibility (up to 2 gels/run)	Novex®, SERVAGel™, Thermo Precise, Pierce Protein Gel, Bio-Rad Mini PROTEAN® Precast gels.
Glass plate dimensions (W x H x T)	3.94 x 3.94 x 0.08 in. (10 x 10 x 0.2 cm)
Gel dimensions (W X H)	3.15 x 3.35 in. (8 x 8.5 cm)
Total buffer volume	250 to 1200 mL
Standard run time for SDS-page	1 to 2 hours at from 90-225V
Dimensions (W x D x H)	7.5 x 5.1 x 5.9 in. (19 x 13 x 15 cm)
Weight	4 lbs. (1.8 kg)

## Ordering Information

Cat. No.	Description
E2010-BT	Enduro VE10 Electroblotting System, includes tank, blotting insert, and 4 cassettes

## Accessories

Cat. No.	Description
E2010-BM	Mini Vertical Electroblotting Module for use with mini vertical gel system, includes 4 cassettes and 8 fiber pads
E2010-PM*	Mini Vertical PAGE module for use with mini vertical gel system, Glass plates, combs, and caster not included
E2110-B-MC	Blotting Cassette
E2110-B-FP	Fiber Blotting Pads, pack of 8 pads
E2110-CP	Mini Cooling Pack for use with mini vertical gel system

\*Glass plates, combs, and caster not included.



# Enduro™ VE20 Blotter

The Enduro VE20 Blotter has a large capacity that can hold up to 16 mini-gels or 4 large format gels. The VE20 blotting system provides all necessary components for performing transfers from vertical slab gels. It comes with tank, lid, platinum wire electrodes, 4 cassettes, 18 fiber pads, and cooling coil. It has interchangeable modular inserts that can combine with VE20 vertical PAGE to use the same universal tank and lid. Complete flexibility is provided as the VE20 can be run with most power settings required. It can perform overnight transfers at voltages as low as 35V and rapid, high-intensity transfers up to 200V in 1 to 2 hours.

The VE20 comes standard with platinum wire electrodes 8 cm apart for increased capacity. A high intensity insert with plate electrodes 4 cm apart for rapid transfers is also available (Cat. No. E2020-HITB). The detachable cooling coil, which connects to the laboratory water supply or a recirculating chiller, prevents buffer depletion to allow overnight transfers and fast high-intensity blots. It also maintains the low temperatures important for protein stability during native transfers. The open design and rigid cassettes maximize current transfer and eliminate 'shadow band' formation. Color-coded cassettes prevent polarity reversal ensuring proper blotting. This is a well-thought-out high capacity tank blotter and a great value.



## Specifications

Number of gels	1 to 4
Total volume inner buffer chamber	640 mL
Total buffer volume for 2 gels	5.3L
Total buffer volume for 4 gels	4.8L
Plate dimensions (W x H x D)	7.88 x 7.88 x 0.16 in. (20 x 20 x 0.4 cm)
Standard spacer dimensions (W x H)	0.79 x 7.88 in. (2 x 20 cm)
IPG spacer dimensions (W x H)	0.24 x 7.88 in. (0.6 x 20 cm)
Std run time without cooling	4 to 5 hours
Std run time with cooling	3 to 4 hours
Dimensions (W x H x D)	11.8 x 10.6 x 7 in. (30 x 27 x 18 cm)
Weight	5.5 lbs. (2.5 kg)

## Ordering Information

Cat. No.	Description
E2020-TB	Enduro VE20 Blotting System, system Including tank and lid, 4 cassettes, 18 fiber pads, cooling coil

## Accessories

Cat. No.	Description
E2020-TBI	Enduro VE20 Maxi platinum wire blotting inset, 4 x compression cassettes and 18 x fiber pads
E2120-TBC	Enduro VE20 Blot Maxi cassette
E2120-TBFP	Fiber pads, pack of 6
E2020-HITB	Enduro VE20 HS Blotting System, high intensity system including tank and lid, 1 cassette, 6 fiber pads, cooling coil
E2120-CC	Enduro VE20 detachable cooling coil
E2120-LD	VE20 lid (no cables)
E2120-T	VE20 tank

# Enduro™ Semi Dry Blotter

The Enduro Semi Dry Blotter offers rapid transfer times for DNA, RNA, and protein blotting – typically 15 to 30 minutes. Western, Northern, and Southern blotting can be easily accomplished via uncomplicated buffer and set up procedures. The Semi Dry Blotter is compatible with gel thicknesses from 0.25 mm up to 10 mm without the need for additional equipment.

The Semi Dry Blotter has the added benefit of economic transfers due to very low buffer volumes – typically only a few milliliters of buffer is required per transfer. The Semi Dry Blotter utilizes a screw down lid, which secures the blot sandwich and allows complete control of pressure ensuring even transfer. The electrodes, comprising platinum-coated anode and stainless steel cathode, will exhibit practically no corrosion therefore providing many years of trouble-free use. Uniform heat dispersion across the blot sandwich ensures stable transfer times and no heat-induced sample loss or transfer distortions. Electrode plates are fully separated to prevent arcing or damage.



## Specifications

### Sample capacity

4 blots	8 x 8.5 cm
2 blots	16 x 8.5 cm
1 blot	16 x 17.5 cm
Recommended current	8 mA/cm <sup>2</sup>
Active transfer area	20 x 20 cm
Buffer volume	20 mL
Run time	15 to 30 min
Dimensions (W x D x H)	12.8 x 9.8 x 2.2 in. (32.5 x 25 x 5.5 cm)
Weight	3 lbs. (1.4 kg)

## Ordering Information

Cat. No.	Description
E2020-SDB	Enduro Semi Dry Blotter for western, southern, and northern blotting
E2020-SDBPS	Enduro Semi Dry Blotter, 250V power supply kit, 115V
E0203	Enduro 250V Power Supply, 120V
E0203-230V	Enduro 250V Power Supply, 230V, EU and UK plug

# Enduro™ Power Supplies

The Enduro power supplies meet a wide range of applications for DNA, RNA, and protein electrophoresis as well as blotting. Designed with safety in mind, they are loaded with features that today's applications demand. Three models are available to meet your needs. Operating modes depending on model include constant voltage, current, or wattage all with automatic crossover.

Operational parameters are easy to set using the membrane keypad and are displayed digitally on the large backlit LCD. The large display is visible from across the laboratory. The Model 250V allows 10 steps per program. Four sets of color-coded output terminals allow multiple gels to be run simultaneously. In the event of a power failure, the Enduro units have an automatic recovery feature to maintain the previous settings.

The Mini 300V Power supply has an optional Power Stack. This combination rack and power source allows you to ergonomically stack 3 units only using one plug on the lab bench while providing optimal air flow around power supplies.



## Specifications

	Model 300V	Model 250V
Output voltage range/increments	2-300V/1V	5-250V/1V
Output current range/increments	4-500 mA/1 mA	10-3,000 mA/10 mA
Output power range/increments	90W max./NA	1-300W/1W
Timer	1 min. - 999 min. or continuous	1 min. - 999 min. or continuous
Programmable	No	Yes, 10 steps/program, 20 program memory
Dimensions (W x D x H)	7.9 x 12.4 x 3.4 in. (20 x 31.4 x 8.5 cm)	7.9 x 12.4 x 3.4 in. (20 x 31.4 x 8.5 cm)
Weight	4.8 lbs. (2.2 kg)	5.5 lbs. (2.5 kg)
Input voltage	120 or 230V, 50/60Hz	120 or 230V, 50/60Hz

## Ordering Information

Cat. No.	Description
E0303	Enduro 300V Power Supply, 120V
E0303-230V	Enduro 300V Power Supply, 230V, EU and UK plug
E0203	Enduro 250V Power Supply, 120V
E0203-230V	Enduro 250V Power Supply, 230V, EU and UK plug

# Enduro™ Power Supplies Selection Guide

Enduro Cat. No.	Gel Size (mm) (W x D x H)	No. of Gels	Start Run				End Run				Run Time	Power Supply Cat. No.
			Voltage	CST	Current (mA)	CST	Voltage	CST	Current (mA)	CST		
<b>SDS-PAGE, Second-Dimension 2D</b>												
VE10	80 x 85 x 1	2-4	200V	+	120-240	-	200V	+	120	-	40-60 min.	E0303, E0203
VE20	160 x 175 x 1	2-4	100V	-	35	+	350V	-	35	+	5 hr. max.	N/A
<b>DNA Restriction Analysis</b>												
E1007-7	70 x 70 x 5	1	80V	+	40	-	80V	+	45	-	45-60 min.	E0303, E0203
E1007-10	71 x 70 x 5	1	80V	+	40	-	80V	+	45	-	45-60 min.	E0303, E0203
E1010-10	100 x 100 x 5	1	90V	+	50	-	95V	+	55	-	45-60 min.	E0303, E0203
E1015-10	100 x 150 x 5	1	90V	+	50	-	95V	+	55	-	45-60 min.	E0303, E0203
E1015-15	150 x 150 x 5	1	90-150V	+	50-80	-	90-150V	+	55-90	-	60-90 min.	E0303, E0203
E1020-20	200 x 200 x 5	1	100-150V	+	50-80	-	100-150V	+	55-90	-	60-90 min.	E0303, E0203
<b>High Throughput DNA Electrophoresis (Horizontal)</b>												
E1010-9611	100 x 120 x 5	-	70V	+	40	-	80V	+	45	-	30-45 min.	E0303, E0203
<b>Western Blotting</b>												
E2010-BT	80 x 85 x 1	4	100V	-	250	-	100V	+	400	-	2 hr.	E0303, E0203
E2020-TB	160 x 175 x 1	4	50/100V Wire/Plate Electrode	+	150-250/1000-1600 Wire/Plate Electrode	+	50/100V Wire/Plate Electrode	+	150-250/1000-1600 Wire/Plate Electrode	+	5-20 hr./1-5 hr.	E0203
E2020-SDB (semi-dry)	200 x 200 x 10	1 lg., 4 sm.	75V	+	1200	-	75V	+	1200	-	15-30 min.	E0203

CST = Constant

# Enduro™ UV Transilluminators

The Enduro UV Transilluminator represent a great new imaging product true to the Enduro name. These UV transilluminators have been designed for rugged use and durability with exceptional performance. The unique hinge design and frame on the UV shield prevents the lid from cracking and hinge damage predominant on most transilluminators in the market. The compact size and quality of image offer a great value. These UV transilluminators come in single or dual wavelength models.

- ▶ Compact size with 21 x 26 cm viewing area
- ▶ Available in single or dual wavelength models
- ▶ Unique heavy duty hinge design can be held in place at any angle for gel cutting
- ▶ UV shield fully protects user from UV light
- ▶ Uniform UV Black Glass provides improved imaging contrast



## Specifications

	Model U1001	Model U1002
Viewing dimensions (W x D)	8.27 x 10.24 in. (210 x 260 mm)	8.27 x 10.24 in. (210 x 260 mm)
Wavelength	302 nm	302 nm / 365 nm
UV tubes – 302 nm	8W x 6	8W x 6
UV tubes – 365 nm	–	8W x 6
Power	100V-240V, 50/60 Hz	100V-240V, 50/60 Hz
Dimensions (W x D x H)	9.96 x 13.39 x 3.15 in. (253 x 340 x 80 mm)	9.96 x 13.39 x 3.15 in. (253 x 340 x 80 mm)
Weight	11 lbs. (5 kg)	11 lbs. (5 kg)

## Ordering Information

Cat. No.	Description
U1001	Enduro UV Transilluminator with 302 nm wavelength, 115V
U1001-230V	Enduro UV Transilluminator with 302 nm wavelength, 230V
U1002	Enduro UV Transilluminator with 302 nm and 365 nm wavelengths, 115V
U1002-230V	Enduro UV Transilluminator with 302 nm and 365 nm wavelengths, 230V

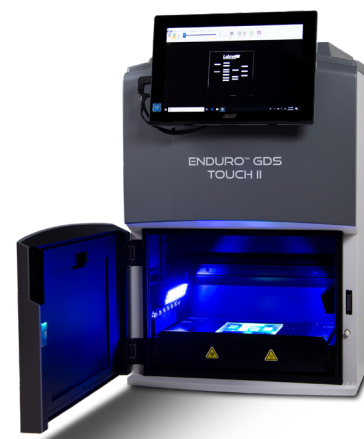
# Enduro™ GDS II Gel Documentation Systems

Enduro GDS II and GDS Touch II are the next generation gel documentation systems available in Labnet brand.

These gel documentation systems are used for visualization of DNA and protein stained within a gel and provide photo documentation of these gels in a laboratory setting.

The GDS II comes in either a 302 nm or 365 nm version and runs on a Windows-based PC (not included). The GDS Touch II comes in either a 302 nm or 365 nm wavelength version with 470 nm epi-blue lights for use with “safe dyes” that eliminate the need for ethidium bromide. Both versions now come with a storage location on top to help maximize bench space and provide a place for accessories.

- Region of interest function allows optimal exposure in less than 30 seconds. No more multiple exposures to get good images.
- Transilluminator good for 30,000 hours so there is no longer a need to buy replacement UV bulbs.
- 16 bit .tiff files ideal for publication.
- Included fully featured qualitative software is ideal for creating publication and notebook quality images.



Enduro GDS II Touch

## Specifications

	Enduro GDS II	Enduro GDS II Touch
Camera	3.2 MP	3.2 MP
Lens	f/1.8	f/1.8
Field of view	15 x 20 cm	15 x 20 cm
Light sources	<ul style="list-style-type: none"> <li>▸ UV 302 or 365 nm</li> <li>▸ Epi White</li> </ul>	<ul style="list-style-type: none"> <li>▸ UV 302 or 365 nm</li> <li>▸ Epi White</li> <li>▸ Epi Blue</li> </ul>
Emission filter	590 nm	590 nm
3-position filter slider	No	Yes
Certifications	CE, cTUVus	CE, cTUVus
Product footprint	12 x 15 in. (30.48 x 38.1 cm)	12 x 15 in. (30.48 x 38.1 cm)
Computer	Runs on Windows® 10 or Windows 7-based PC or newer (not included)	Runs on a Windows 10-based Tablet (built-on)

## Ordering Information

Cat. No.	Description
GDS2-1302	Enduro GDS II with 302 nm UV
GDS2-1365	Enduro GDS II with 365 nm UV
GDST2-1302	Enduro GDS Touch II with epi-blue and 302 nm UV
GDST2-1365	Enduro GDS Touch II with epi-blue and 365 nm UV

## Accessories

Cat. No.	Description
GDS-TL1D-1	Total Lab 1D single user license for quantitative analysis
GDS2-GCS	Gel cutting surface
GDS2-OG	Orange goggles to visualize bands for cutting with blue light
GDS2-WLCS	White light conversion screen
GDS2-BLCS	Blue light conversion screen
GDS2-PRT	Labnet GDS2 Thermal Printer
GDS-12022	High gloss thermal paper
GDS2-USBS	USB splitter
GDS2-USBMK	USB mouse/keyboard



Enduro GDS II



White light conversion screen  
(Cat. No. GDS2-WLCS)



Blue light conversion screen  
(Cat. No. GDS2-BLCS)

## Vortexer Vortex Mixer

The Vortex Mixer features a true circular orbit for even distribution of vortexing across the entire speed range. Variable speed makes the unit useful for a variety of applications from gentle mixing to resuspending pellets.

The standard head supplied with the vortexer, the CombiCup™, will accommodate a single tube or a whole handful. The head is easily removed and replaced with optional heads that accommodate tubes of a variety of sizes as well as microplates.

- ▶ An optimized counter balance enables the vortex mixer to be lightweight and stable during operation
- ▶ The powerful motor provides efficient mixing and a long service life
- ▶ Two modes allow for “touch” or continuous operation
- ▶ Safe for cold room or incubator use



### Specifications

Speed range	120V: 200 to 3,400 rpm 100V: 200 to 3,200 rpm 230V: 200 to 2,800 rpm
Operating modes	Touch or continuous
Ambient temperature	4°C to 40°C
Accuracy	± 150 rpm at maximum speed
Dimensions (W x D x H)	5.5 x 6.3 x 4.7 in. (14 x 16 x 12 cm)
Weight	4.6 lbs. (2.1 kg)

### Ordering Information

Cat. No.	Description
S0200	Vortex Mixer with CombiCup head, 120V
S0200-100V	Vortex Mixer with CombiCup head, 100V
S0200-230V-EU	Vortex Mixer with CombiCup head, 230V, EU plug
S0200-230V-UK	Vortex Mixer with CombiCup head, 230V, UK plug
S0200-230V-CH	Vortex Mixer with CombiCup head, 230V, CH plug

### Accessories

Cat. No.	Description
S0200-10	CombiCup head
S0200-20	Optional head, 3 inch, for processing larger numbers of tubes
S0200-21	Optional head for 24 x 1.5/2.0 mL tubes, 24 x 0.5 mL tubes, and 32 x 0.2 mL tubes (or 4 tube strips)
S0200-22	Optional head for 1 microplate or 64 x 0.2 mL tubes or 8 x 0.2 mL tube strips
S0200-23	Optional head for 8 x 15 mL and 8 x 12/13 mm diameter tubes
S0200-24	Optional head attachment for 6 x 50 mL tubes
S0200-25	Optional head for 12 x 1.5/2.0 mL tubes, held horizontally
S0200-26	Optional head for 4 x 15 mL tubes, held horizontally
S0200-27	Optional head for 2 x 50 mL tubes, held horizontally



# Orbit™ P4 Digital Microtube and Microplate Shaker

The Orbit P4 Digital Shakers feature variable speed across a broad range, making them useful for a variety of applications. Both time of operation and shaker speed are set digitally with a single knob with their values shown on the large 3-digit LED. A sturdy base encloses the motor for quiet, vibration-free operation. All three models can be used in temperature-controlled environments. Their compact size makes them ideal for use in the incubators.

These vortexers accept all standard microplates (for higher capacity and deep well plates, refer to Orbit 300 on the following page). Retaining springs on the contoured steel platform hold samples in place. The Orbit P4 holds four microplates



## Specifications

Speed range	120V: 100 to 1,400 rpm 230V: 100 to 1,200 rpm
Capacity	4 microplates
Maximum load	0.66 lbs. (0.3 kg)
Timer	30 sec. to 99 min. 50 sec. in 10-second steps (under 10 min. in 1-second steps) or continuous
Motion, orbit size	Circular, 3 mm
Ambient operating range	5°C to 40°C, up to 85% RH, non-condensing
Dimensions (W x D x H)	7.4 x 11.8 x 5.9 in. (18.8 x 30 x 15 cm)
Weight	9.5 lbs. (4.3 kg)

## Ordering Information

Cat. No.	Description
S2020-P4-B	Orbit P4 Digital Shaker with platform for 4 microplates, 120V
S2020-P4-B-230V	Orbit P4 Digital Shaker with platform for 4 microplates, 230V, EU and UK plug

## Accessories

Cat. No.	Description	Qty/Pk
S2020-R	Extra workstation/transfer rack	1
C1205	Individual adapters for 0.5/0.6 mL tubes	6
C1206	Individual adapters for 0.4 mL tubes	6
C1222	Individual adapters for 0.2 mL thermal cycling tubes	6



# Orbit™ 300 Multipurpose Digital Vortexer

Three interchangeable platforms (available separately) accommodate a variety of sample containers to make the Orbit 300 a truly multipurpose vortexer. The flat platform, covered with a non-slip rubber mat, holds plates, dishes, boxes, etc. The microplate platform will accommodate up to four deep well microplates. The clamp platform has spring loaded retaining bars that adjust to hold flasks, bottles, racks, and other containers in place.

Time and speed are set digitally with a single knob. Values are shown on the large, three-digit LED. The broad speed range allows the Orbit 300 to be used for gentle mixing as well as vigorous agitation.

This compact vortexer can be used in temperature controlled environments making it ideal for cold room or incubator use.

- Compact
- Chemically resistant and easy to clean plastic housing
- Temperature range 0°C to 105°C



## Specifications

Speed range	100 to 1,200 rpm
Maximum load	4.4 lbs. (2 kg)
Timer	30 sec. to 99 min. 50 sec. in 10-second steps (under 10 min. in 1-second steps) or continuous
Motion, orbit size	Circular, 3 mm
Ambient operating range	5°C to 40°C, up to 85% RH, non-condensing
Dimensions (W x D x H)	10.3 x 13.3 x 5.1 in. (26.2 x 33.7 x 13 cm)
Weight	12.35 lbs. (5.6 kg)

## Ordering Information

Cat. No.	Description
S2030-300-B	Orbit 300 Multipurpose digital Vortexer, without platform, 120V
S2030-300-B-230	Orbit 300 Multipurpose digital Vortexer, without platform, 230V, EU and UK plug

## Accessories

Cat. No.	Description	Qty/Pk
S2030-10	Platform for four microplates	1
S2030-12	Platform with non-slip rubber mat	1
S2030-13	Spring loaded platform for flasks, bottles or tube racks, etc.	1
K564	Tube rack, PP, 90 x 13 mm diameter tubes, fits in S2030-13 platform	5
K565	Tube rack, PP, 60 x 16 mm diameter tubes, fits in S2030-13 platform	5
K566	Tube rack, PP, 40 x 20 mm diameter tubes, fits in S2030-13 platform	5



Platform for four microplates (Cat. No. S2030-10)

# Orbit™ 1000 Multipurpose Digital Shaker

Four platform configurations allow the Orbit 1000 Digital Shaker to meet a variety of shaking and mixing applications. Single and double flat platforms hold trays, plates, and dishes. The double platform allows for expansion of the shaker capacity without increasing the footprint. The universal platform has spring loaded bars that adjust to fit flasks, bottles, tube racks, and odd shaped containers. Pre-drilled to hold Erlenmeyer flask clamps (sold separately), the flask platform is ideal for mixing and growing cultures. Platforms are easily removable and interchangeable.

A powerful brushless motor and counter balanced shaker mechanism provide smooth operation and years of trouble-free use. Speed and time are set with the single knob, while the set and current values are displayed digitally. Speed is adjustable over a broad range to allow for applications such as staining and destaining gels, growth of bacterial cultures, and hybridization. The Orbit 1000 Digital Shaker is safe for use in temperature controlled environments. Platforms sold separately.



## Specifications

Speed range	20 to 300 rpm
Capacity	4 x 1L, 5 x 500 mL, 9 x 250 mL, 16 x 125 mL
Maximum load	9 lbs. (4 kg)
Timer	30 sec. to 99 min. 50 sec. in 10-second steps (under 10 min. in 1-second steps) or continuous
Motion, orbit size	Circular, 19 mm
Ambient operating range	5°C to 40°C, up to 85% RH, non-condensing
Dimensions (W x D x H)	10.3 x 13.3 x 5.1 in. (26.2 x 33.7 x 13 cm)
Weight	16 lbs. (7.3 kg)

## Ordering Information

Cat. No.	Description
S2030-1000-B	Orbit 1000 Digital Shaker, without platform, 120V
S2030-1000-B-230	Orbit 1000 Digital Shaker, without platform, 230V, EU and UK plug

## Accessories

Cat. No.	Description
S2031-12	Flat platform with non-slip rubber mat, 30 x 30 cm
S2031-12D	Flat double platform with non-slip rubber mat, 30 x 30 cm
S2031-13	Spring loaded platform for flasks, bottles or tube racks
S2031-18	Flask clamp platform without clamps
S2040-25	Clamp for 25 mL Erlenmeyer flask (max. 16)
S2040-50	Clamp for 50 mL Erlenmeyer flask (max. 16)
S2040-85	Clamp for 125 mL Erlenmeyer flask (max. 16)
S2040-99	Clamp for 250 mL Erlenmeyer flask (max. 9)
S2040-09	Clamp for 500 mL Erlenmeyer flask (max. 5)
S2040-01	Clamp for 1,000 mL Erlenmeyer flask (max. 4)



Flat platform with non-slip rubber mat (Cat. No. S2031-12)



Spring loaded platform (Cat. No. S2031-13)

# Orbit™ 1900 High Capacity Shaker

The Orbit 1900 Shaker is designed for continuous use and heavy loads. Its solid construction and counter balanced drive system provide vibration-free operation. Operation of the shaker can be timed or continuous, while the speed is variable. Both time and speed are set digitally with a single knob.

Three heavy-duty stainless steel platforms are available to accommodate a variety of different sizes of sample containers. The flat platform is useful for trays, plates, boxes, and other containers. A non-slip mat on the platform surface keeps items in place. Flasks are held on the flask platform through the use of clamps (sold separately). As many as five 2L or six 1L flasks can be shaken on the platform. A universal bar clamp platform adjusts to hold odd shaped containers.

- Suitable for use in an incubator or cold room
- Large, three-digit LED display



## Specifications

Speed range	25 to 300 rpm
Maximum load	22 lbs. (10 kg)
Timer	30 sec. to 99 min. 50 sec. in 10-second steps (under 10 min. in 1-second steps) or continuous
Motion, orbit size	Circular, 19 mm
Ambient operating range	5°C to 40°C, up to 85% RH, non-condensing
Dimensions (W x D x H)	15.3 x 18.3 x 6.2 in. (39 x 46.5 x 16 cm)
Weight	68.35 lbs. (31 kg)

## Ordering Information

Cat. No.	Description
S2040-1900	Orbit 1900 Digital Shaker, without platform, 120V
S2040-1900-230V	Orbit 1900 Digital Shaker, without platform, 230V, EU and UK plug

## Accessories

Cat. No.	Description
S2040-12	Flat platform with nonslip mat (40 x 50 cm)
S2040-15	Universal bar clamp platform for holding a variety of containers
S2040-18	Platform for flask clamps (clamps sold separately)
S2040-25	Clamp for 25 mL Erlenmeyer flask (max. 28)
S2040-50	Clamp for 50 mL Erlenmeyer flask (max. 28)
S2040-85	Clamp for 125 mL Erlenmeyer flask (max. 28)
S2040-99	Clamp for 250 mL Erlenmeyer flask (max. 20)
S2040-09	Clamp for 500 mL Erlenmeyer flask (max. 10)
S2040-01	Clamp for 1L Erlenmeyer flask (max. 6)
S2040-02	Clamp for 2L Erlenmeyer flask (max. 5)

# Orbit™ LS Low Speed Shaker

The Orbit LS Low Speed Shaker is a high quality, general purpose shaker with economical analog control.

Styled after the other models in the line, the Orbit LS features a streamlined, compact design with an easy-access control panel. Electronic controls are utilized for setting speed and time. The knobs used for selecting parameters turn easily and are clearly marked with corresponding values.

A large orbit and low speed make the Orbit LS useful for staining and destaining gels, washing blots, and general mixing. The shaker is supplied with a 30 x 30 cm stainless steel flat platform and non-slip rubber mat to keep plates, dishes, and other sample containers in place.

- ▶ Safe for use in temperature-controlled environments
- ▶ The small profile of this shaker makes it ideal for use in incubators



## Specifications

Speed range	3 to 60 rpm
Maximum load	11 lbs. (5 kg)
Timer	20 to 120 min. in 10 min. step or continuous
Motion, orbit size	Circular, 19 mm
Platform dimensions (W x D)	11.6 x 11.6 in. (29.5 x 29.5 cm) useable area
Ambient operating range	4°C to 65°C, up to 85% RH, non-condensing
Dimensions (W x D x H)	11.6 x 13.4 x 6.3 in. (29.5 x 34 x 16 cm)
Weight	14.5 lbs. (6.6 kg)

## Ordering Information

Cat. No.	Description
S2030-LS-B	Orbit LS Low Speed Orbital Shaker with flat platform, 120V
S2030-LS-B-230V	Orbit LS Low Speed Orbital Shaker with flat platform, 230V, EU and UK plug

## Accessories

Cat. No.	Description	Qty/Pk
S2031-12D	Stacked platforms (29.5 x 29.5 cm)	2
E2110-BBS	Blot box, 9.1 x 6.6 cm, 3-50 mL capacity for mini protein gels	10
E2110-BBL	Blot box, 11.7 x 8.9 cm, 6-10 mL capacity for larger mini protein gels	10

# GyroMini™ and Enduro™ MiniMix™ Nutating 3-D Mixers

The GyroMini and Enduro Mini Mix are small nutating mixers that combine the motions of an orbital shaker and a rocker to produce a three dimensional action. This action provides thorough yet gentle mixing without foaming.

The pitch and speed of the GyroMini are fixed to provide the optimal motion for mixing and resuspending samples in small containers such as blood and centrifuge tubes. A dimpled mat on the platform surface holds tubes firmly in place. The mat will hold as many as 60 x 1.5 mL tubes, 30 pediatric blood tubes (3 mL), 21 standard blood tubes (7 mL), 17 x 15 mL tubes, or 9 x 50 mL tubes.

The Enduro MiniMix has a pitch and speed that produces the perfect motion for processing western blots and staining gels. The tilt angle is large enough to provide thorough distribution of solutions, yet is small enough to keep the center of the blot from drying out. Minimal amounts of solution can be used, conserving valuable probes and antibodies. A non-slip mat holds blotting boxes in place on the platform.

- Suitable for temperature controlled environments



GyroMini Nutating 3-D Mixer

## Specifications

	GyroMini	Enduro Mini Mix
Speed range	120V: 24 rpm 230V: 20 rpm	120V: 18 rpm 230V: 20 rpm
Platform tilt angle	20°, fixed	5°, fixed
Maximum load	1.75 lbs. (0.8 kg) balanced	1.75 lbs. (0.8kg), balanced
Ambient operating range	5°C to 40°C (up to 80% RH at 31°C, decreasing linearly to 50% RH at 40°C)	5°C to 40°C (up to 80% RH at 31°C, decreasing linearly to 50% RH at 40°C)
Dimensions (W x D x H)	9.5 x 5.75 x 6.75 in. (24 x 14.6 x 17 cm)	9.75 x 6.75 x 6 in. (24 x 17.15 x 15 cm)
Weight	1.88 lbs. (0.85 kg)	1.9 lbs. (0.88 kg)



Enduro MiniMix Nutating 3-D Mixer

## Ordering Information

Cat. No.	Description
S0500	GyroMini 3-D shaker, with dimpled rubber mat, 120V
S0500-230V-EU	GyroMini 3-D shaker, with dimpled rubber mat, 230V, EU plug
S0500-230V-UK	GyroMini 3-D shaker, with dimpled rubber mat, 230V, UK plug
S0600	Enduro MiniMix Nutating 3-D Mixer, 120V
S0600-230V	Enduro MiniMix Nutating 3-D Mixer, 230V, EU plug
S0600-230V-UK	Enduro MiniMix Nutating 3-D Mixer, 230V, UK plug

## Accessories

Cat. No.	Description	Qty/Pk
E2110-BBS	Blotting box, 9.1 x 6.6 cm, 3 to 5 mL gel capacity, for mini protein gels	10
E2110-BBL	Blotting box, 11.7 x 8.9 cm, 6 to 10 mL gel capacity, for larger mini protein gels	10

# Revolver™ Rotator

The unique design of the Labnet Revolver allows for mixing tubes horizontally, vertically, or at any position in between, simply by turning the rotisserie plate.

Rotating tubes horizontally produces a gentle mixing motion for applications such as hybridization. Turning the rotisserie plate 90°, so that the tubes are positioned vertically results in an end-over-end tumbling action, such as that required for mixing samples in blood tubes. Any position between these two extremes can be selected to produce the desired level of agitation.

Each rotisserie consists of two plates that can be adjusted independently of each other, thus allowing two types of motions to occur simultaneously in the same rotisserie. Rotisserie plates may be mixed and matched.

With its compact, portable design, the Revolver is easily transported from the bench to the cold room or incubator. The molded housing and rotisserie assembly are designed for easy cleaning and decontamination.

A 36 x 1.5/2.0 mL rotisserie is supplied with the unit. Rotisserie assemblies are also available for 15 mL tubes as well as 50 mL tubes.



## Specifications

Speed range	120V: Fixed, 18 rpm 230V: Fixed, 20 rpm
Rotation axis	Continuously adjustable, 0° to 90°
Ambient operating range	5°C to 40°C (up to 80% RH at 31°C, decreasing linearly to 50% RH at 40°C)
Dimensions (W x D x H)	9.4 x 5 x 6 in. (23.9 x 12.7 x 15.24 cm)
Weight	4.4 lbs. (2.0 kg)



## Ordering Information

Cat. No.	Description
H5600	Revolver Rotator with rotisserie for 36 x 1.5/2.0 mL tubes, 120V
H5600-230V-EU	Revolver Rotator with rotisserie for 36 x 1.5/2.0 mL tubes, 230V, EU plug
H5600-230V-UK	Revolver Rotator with rotisserie for 36 x 1.5/2.0 mL tubes, 230V, UK plug



## Accessories

Cat. No.	Description
H5600-02	Rotisserie for 36 x 1.5/2.0 mL tubes (supplied with unit)
H5600-15	Rotisserie for 10 x 15 mL tubes or 12 x 5/7 mL tubes
H5600-50	Rotisserie for 6 x 50 mL tubes

# Mini Lab Roller™ Rotator

Simple, yet versatile, the Mini Lab Roller Rotator is designed for mixing samples in both a horizontal and vertical plane. The unit accepts a broad assortment of tube sizes as well as microplates. Safe for cold room or incubator use, this mixer meets a variety of needs in areas such as biochemistry, molecular biology, clinical testing and histochemistry.

The unique design of this rotator allows the level of agitation to be adjusted from gently rotating, through two levels of tumbling, to end over end mixing simply by changing the rotisserie position or tilting the instrument. Rotisserie speed is fixed at 24 rpm.

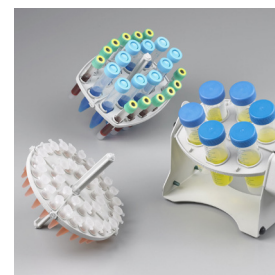
The Mini LabRoller is supplied with a rotisserie for 36 x 1.5/2.0 mL tubes. Two optional rotisseries are available. The first holds ten standard or conical 15 mL tubes (or 15-16 mm diameter) as well as twelve 12 to 13 mm diameter tubes. The other holds six 50 mL conical tubes. Microplates can be used with any of the rotisseries.

- Lightweight, and portable, it is easily moved from the bench to a hood
- Can be used inside Labnet's Mini Incubator for temperature-controlled incubations



## Specifications

Speed range	120V: Fixed, 24 rpm 230V: Fixed, 20 rpm
Rotation axis	Adjustable, 0° to 90°
Ambient operating range	5°C to 40°C (up to 80% RH at 31°C, decreasing linearly to 50% RH at 40°C)
Dimensions (W x D x H)	8.4 x 4 x 5 in. (21.3 x 10.2 x 12.6 cm)
Weight	1.8 lbs. (0.8 kg)



## Ordering Information

Cat. No.	Description
H5500	Mini LabRoller Rotator with rotisserie for 36 x 1.5/2.0 mL tubes, 120V
H5500-230V-EU	Mini LabRoller Rotator with rotisserie for 36 x 1.5/2.0 mL tubes, 230V, EU plug
H5500-230V-UK	Mini LabRoller Rotator with rotisserie for 36 x 1.5/2.0 mL tubes, 230V, UK plug
I5110A-MLR*	Mini Incubator with Mini Lab Roller and rotisseries for 1.5, 15 and 50 mL tubes, 120V
I5110A-MLR-230E*	Mini Incubator with Mini Lab Roller and rotisseries for 1.5, 15 and 50 mL tubes, 230V, EU plug

\*For more information on our Mini Incubator please visit page 22.

## Accessories

Cat. No.	Description
H5500-02	Rotisserie for 36 x 1.5/2.0 mL microcentrifuge tubes (supplied with unit)
H5500-15	Rotisserie for 10 x 15 mL tubes or 12 x 5/7 mL tubes
H5500-50	Rotisserie for 6 x 50 mL tubes



Mini Lab Roller with Mini Incubator

# Pro 30 Reciprocal Shaker

Pro 30 Shaker features a left to right linear action to provide gentle to vigorous shaking. Four platform configurations make this model valuable for a variety of applications.

Modern styling gives the Pro 30 a small footprint and easy-access control panel. Speed and time are electronically controlled while their values are set with easy turn knobs.

The four platform configurations include a large 30 x 30 cm flat platform with non-slip rubber mat to hold sample containers in place. For added capacity, a stacked double platform is also available. The spring loaded universal platform holds tube racks, bottles and odd shaped containers. Flasks up to 1L can be shaken on the flask clamp platform. Pre-drilled to hold a variety of different sized clamps, the platform and clamps are sold separately. Platforms are easily interchanged.

- Compact in size, it will fit in many incubators
- Safe for use in temperature controlled environments



## Specifications

Speed range	5 to 150 strokes/min.
Maximum load	11 lbs. (5 kg)
Timer	20 to 120 min. in 10 min. steps or continuous
Motion, orbit size	Linear, 1.2 in. (30 mm) stroke length
Ambient operating range	4°C to 65°C, up to 85% RH, non-condensing
Platform dimensions (W x L)	11.8 x 11.8 in (30 x 30 cm)
Dimensions (W x D x H)	10 x 12.6 x 6.3 in. (25.5 x 32 x 16 cm)
Weight	14.5 lbs. (6.6 kg)

## Ordering Information

Cat. No.	Description
S2030-RC-B	Pro 30 Reciprocal Shaker without platform, 120V
S2030-RC-B-230V	Pro 30 Reciprocal Shaker without platform, 230V, EU and UK plug

## Accessories

Cat. No.	Description
S2031-12	Flat platform with non-slip rubber mat, 30 x 30 cm
S2031-12D	Flat, two stacked platforms with non-slip rubber mat, 30 x 30 cm
S2031-13	Spring loaded platform for flasks, bottle or tube racks
S2031-18	Flask clamp platform without clamps, pre-drilled
S2040-85	Clamp for 125 mL flask (max. 16)
S2040-99	Clamp for 250 mL flask (max. 9)
S2040-09	Clamp for 500 mL flask (max. 5)
S2040-01	Clamp for 1L flask (max. 4)



Spring loaded platform  
(Cat. No. S2031-13)



Flask clamp platform  
(Cat. No. S2031-18), clamps  
sold separately



# ProBlot™ Rocker 25 and 25XL

The Labnet compact rockers, ProBlot 25 and 25XL, are ideal for staining, hybridization, and general mixing. Their basic design and economical price makes them a great value for any laboratory.

Rocking speed is adjustable to provide the gentle motion required for staining fragile gels as well as the more vigorous action necessary for washing blots. The rocking movement is fixed at 7°.

The platform surfaces are covered with non-slip rubber pads to prevent sample containers from moving during operation. Elastic tie downs are available to secure bags, boxes, tubes and other containers in place. The ProBlot 25 platform measures 26 x 20 cm, while the ProBlot 25XL platform is significantly larger at 30 x 30 cm. For increasing the work area without sacrificing valuable bench space, double platform models are available.

- Can be used safely in temperature controlled environments up to 65°C
- Low profile and compact size make them perfect for use in incubators



S2025-D-B

## Specifications

Speed range	5 to 120 tilts/min.
Maximum load	11 lbs. (5 kg)
Timer	0 to 2 hrs., or continuous
Motion	Rocking
Tilt range	Fixed 7°
Clearance between platforms	3.5 in. (9 cm)
Ambient operating range	5°C to 40°C, up to 85% RH, non-condensing
Platform dimensions (W x D)	
ProBlot 25	11.4 x 8 in. (28.9 x 20.3 cm)
ProBlot 25XL	11.8 x 11.8 in. (30 x 30 cm)
Dimensions (W x D x H)	
ProBlot 25	11.4 x 12.6 x 5.7 in. (29 x 32 x 14.5 cm)
ProBlot 25XL	12.8 x 14.2 x 5.7 in. (32.5 x 36 x 14.5 cm)
Weight	11.7 lbs. (5.3 kg)



S2025-XLD-B

## Ordering Information

Cat. No.	Description
S2025-B	ProBlot Rocker 25, single platform, 120V
S2025-B-230V	ProBlot Rocker 25, single platform, 230V, EU and UK plug
S2025-D-B	ProBlot Rocker 25D, double platform, 120V
S2025-D-B-230V	ProBlot Rocker 25D, double platform, 230V, EU and UK plug
S2025-XL-B	ProBlot Rocker 25XL, large single platform, 120V
S2025-XL-B-230V	ProBlot Rocker 25XL, large single platform, 230V, EU and UK plug
S2025-XLD-B	ProBlot Rocker 25XLD, large double platform, 120V
S2025-XLD-B-230V	ProBlot Rocker 25XLD, large double platform, 230V, EU and UK plug

## Accessories

Cat. No.	Description	Qty/Cs
S2025-T	Elastic tie downs	4

# Rocker 35 EZ

The Rocker 35 EZ is the next generation large capacity rocker. This upgraded Rocker 35 is designed for durability in laboratories requiring a large platform area and precise control over rocking parameters. It is backed by a 5-year warranty.

Both speed and time are easily selectable and the analog control has been upgraded to display discreet values. The tilt is now easily adjustable with knob on the side. This system can handle up to 11 pounds or 5 kg of load so a double platform can be fully loaded without any variation to speed.

The unit comes in both single and dual platform models and includes a ribbed non-slip rubber mat to keep containers in place. This unit is also compatible with our sticky mat (I-5240) for applications requiring greater sample adhesion to the platform.



## Specifications

Speed range	10 to 120 rpm
Maximum load	11 lbs. (5 kg)
Timer	10 to 120 min. or continuous
Tilt range	Adjustable, $\pm 20^\circ$
Ambient operating range	4°C to 65°C, up to 85% RH, non-condensing
Dimensions (W x D x H)	
Single platform	14.2 x 14.2 x 6.7 in. (36 x 36 x 17 cm)
Double platform	14.2 x 14.2 x 10.2 in. (36 x 36 x 26 cm)
Weight	
Single platform	14.3 lbs. (6.5 kg)
Double platform	17.2 lb. (7.8 kg)

## Ordering Information

Cat. No.	Description
S2035-E	Rocker 35 EZ, single platform, 120V
S2035-E-230V	Rocker 35 EZ, single platform, 230V, EU and UK plug
S2035-DE	Rocker 35 EZ, double platform, 120V
S2035-DE-230V	Rocker 35 EZ, double platform, 230V, EU and UK plug

# Benchtop Shaking Incubator 222DS

The 222DS Benchtop Shaking Incubator from Labnet provides a small footprint with large performance, as well as unparalleled flexibility. The 222DS lab incubator lid has a low pivot point which provides a compact lab friendly shaking incubator sure to fit on the lab bench and under your shelves. The large assortment of accessories allows users the flexibility to use for many molecular biology applications. The included software, not required for use, allows monitoring of rpm and temperature throughout runs and saving data to a PC. The 222DS Benchtop Shaking Incubators provide uniform motion even under adverse conditions.

- Exceptional versatility
- Precise SmartCheck™ digital microprocessor temperature control
- Compact design allows unit to open under shelves
- Flexibility to control unit using keypad or software



## Specifications

Speed range	20 to 300 rpm
Capacity	16 x 125 mL , 9 x 250 mL, 5 x 500 mL, 4 x 1,000 mL
Temperature range	Ambient, +5°C to 70°C in 0.1°C increments
Temperature accuracy	±0.5°C
Temperature stability	±0.5°C
Motion, orbit size	Circular, 19 mm
Timer	1 min. to 99 hrs. or continuous
Platform dimensions (W x D)	11.8 x 11.8 in. (30 x 30 cm)
Dimensions (W x D x H)	15 x 21 x 16 in. (37 x 53 x 40 cm)
Height with lid open	21.7 in. (55 cm)
Weight	45 lbs. (20.2 kg)

## Ordering Information

Cat. No.	Description
I-5222-DS	222DS Benchtop Shaking Incubator, 120V
I-5222-DS-230V	222DS Benchtop Shaking Incubator, 230V

## Accessories

Cat. No.	Description
I-5230	Shaking platform, predrilled
I-5230-DS	Universal platform, 11.8 x 11.8 in. (30 x 30 cm)
I-5220	Petri dish shelf
I-5240	Sticky mat, 150 x 150 x 3 mm
I-5250	Microtiter hotel for 3 x microplates stacked horizontally
I-5260	Combi tube holder, 6 x 15 or 50 mL tubes
I-2041-1000	Plastic flask clamp, 1,000 mL (max. 4)
I-2041-500	Plastic flask clamp, 500 mL (max. 5)
I-2041-250	Plastic flask clamp, 250 mL (max. 9)
I-2041-125	Plastic flask clamp, 125 mL (max. 16)



Plastic flask clamps

# Vortemp™ 56 Shaking Incubator

Designed for simultaneous heating and mixing of small samples, the VorTemp 56 Shaking Incubator features interchangeable platforms for microtubes or microplates. Both platforms are supplied with the unit. Temperature in the VorTemp 56 Shaking Incubator is adjustable over a broad range, making the unit useful for a variety of applications, including bacterial cultures in microtubes and microplates. Mechanical convection provides a uniform and stable environment within the chamber. The VorTemp 56 shaking incubator may also be used in the cold room for sub-ambient applications.



- Shake and incubate samples simultaneously
- Supplied with interchangeable platforms for microtubes or microplates
- Broad temperature and speed range
- Intelligent control with digital LED display
- Shaking feature can be turned off, allowing the unit to be used as a static incubator

## Specifications

Speed range	100 to 1,200 rpm, 1,400 rpm (only at 60Hz)
Capacity	56 x 1.5 or 2.0 mL microtubes, 4 standard or 2 deep well microplates
Temperature range	Ambient, +5°C to 99°C
Temperature uniformity	±0.5°C
Motion, orbit	Circular, 3 mm
Timer	1 to 99 min. or continuous
Dimensions	10 x 13 x 9 in. (26.5 x 32.5 x 22.5 cm)
Weight	24 lbs. (11 kg)

## Ordering Information

Cat. No.	Description
S2056A	Vortemp 56 Shaking incubator for microtubes and microplates, 120V
S2056A-220	Vortemp 56 Shaking incubator for microtubes and microplates, 230V

## Accessories

Cat. No.	Description	Qty/Cs
S2056-R	1.5/2.0 mL platform/workstation for microcentrifuge tubes	1
S2056-Q	Microplate platform	1
C1205	Individual adapters for 0.5/0.6 mL tubes	6
C1206	Individual adapters for 0.4 mL tubes	6
C1222	Individual adapters for 0.2 mL thermal cycling tubes	6

# Vortemp™ 1550 Shaking Incubator

Designed for simultaneous heating and mixing of small samples, the VorTemp 1550 Shaking Incubators are supplied with interchangeable platforms for standard 15 mL and 50 mL conical tubes. Maximum capacity is 8 x 50 mL or 18 x 15 mL. Temperature in the VorTemp 1550 is adjustable over a broad range, making the unit useful for a variety of applications, including bacterial cultures and digestions. Mechanical convection provides a uniform and stable environment within the chamber. The VorTemp 1550 may also be used in the cold room for sub-ambient applications.

- Shake and incubate samples simultaneously
- Supplied with interchangeable platforms for 15 and 50 mL tubes
- Broad temperature and speed range
- Intelligent control with digital LED display



## Specifications

Speed range	100 to 900 rpm
Capacity	8 x 50 mL tubes or 18 x 15 mL tubes
Temperature range	Ambient, +5°C to 99.5°C
Temperature uniformity	±0.5°C
Motion, orbit	Circular, 3 mm
Timer	From 30 sec. to 99 min. 50 sec. in 10 sec. steps (under 10 min. in 1 sec. steps) or continuous
Dimensions	10 x 13 x 12 in. (26.5 x 32.5 x 30.5 cm)
Weight	25 lbs. (11.5 kg)

## Ordering Information

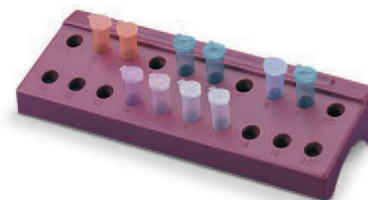
Cat. No.	Description
S2050A	Vortemp 1550 Shaking incubator for 15 and 50 mL tubes, 120V
S2050A-230V	Vortemp 1550 Shaking incubator for 15 and 50 mL tubes, 230V

## Accessories

Cat. No.	Description	Qty/Pk
S2056-R	1.5/2.0 mL platform/workstation for microcentrifuge tubes	1
S2056-Q	Microplate platform	1
C0200-17A	Adapters for 5 mL (13 x 75 mm) and 7 mL (13 x 100 mm) tubes	6

## Microtube Workstation Rack

Two levels and wide spacing provide easy sample access and visibility. Molded from durable, autoclavable polypropylene, the rack has non-skid rubber feet. Tube positions are numbered 1 to 20 for organizing samples.



### Ordering Information

Cat. No.	Description	Qty/Pk
C8210	Microtube support rack, red, 20 x 1.5/2.0 mL tubes (210 x 75 x 35mm)	1

## 50-place Microtube Box with Hinged Lid

Ideal for sample storage, these microtube polypropylene boxes can be used in the freezer (to -80°C) and autoclaved. The easy open lid with living hinge and positive catch keeps samples securely in place. The translucent lid is alphanumerically labeled. Boxes available for 1.5/2.0 mL and 0.5 mL tubes.



### Ordering Information

Cat. No.	Description	Qty/Pk
R7906	Storage box with hinged lid, blue, 50 x 0.5 mL (120 x 70 x 37 mm)	1

## 50-place Box with Telescoping Lid

Tubes of varying lengths are accommodated by the telescoping lids of these boxes. Made of polypropylene, they can be used for freezer storage and autoclaved. Lids are alphanumerically labeled. Boxes hold 0.5 mL, 1.5/2.0 mL and 5 mL tubes as well as cryogenic vials and chromatography vials. Freezer storage racks and numeric ID grids are available for the 1.5/2.0 mL boxes.



### Ordering Information

Cat. No.	Description	Qty/Pk
R7900	Storage box with telescoping lid, 50 x 1.5/2.0 mL (143 x 75 x 45 mm)	1
R7905	Storage box with telescoping lid, 50 x 0.5 mL (122 x 62 x 33 mm)	1

# 100-place Microtube Box with Hinged Lid

Microtube polypropylene boxes with stand freezing (to -80°C) and autoclaving. The 3-point hinge maintains its integrity during repeated use. A positive catch keeps the lid securely fastened. Alpha-numeric indexing is stamped inside the boxes for easy sample ID, and the clear lid allows visibility even when the lid is closed. Boxes are available in a variety of colors for coding samples and hold 100 x 1.5/2.0 mL tubes, cryogenic vials or chromatography vials. Measure 42 x 142 x 55 mm. A solid black box is available for light sensitive samples.



## Ordering Information

Cat. No.	Description	Qty/Pk
R8300	Storage box with hinged lid, 100 x 1.5/2.0 mL, natural	1
R8300-BLK	Storage box with hinged lid, 100 x 1.5/2.0 mL, opaque black for light sensitive samples	1
R8300-G	Storage box with hinged lid, 100 x 1.5/2.0 mL, green	1
R8300-B	Storage box with hinged lid, 100 x 1.5/2.0 mL, blue	1
R8300-P	Storage box with hinged lid, 100 x 1.5/2.0 mL, pink	1
R8300-O	Storage box with hinged lid, 100 x 1.5/2.0 mL, orange	1
R8300-Y	Storage box with hinged lid, 100 x 1.5/2.0 mL, yellow	1
R8300-A	Storage box with hinged lid, 100 x 1.5/2.0 mL, rainbow pack, includes one box of green (-G), blue (-B), pink (-P), orange (-O), and yellow (-Y) color	5

# Large Capacity Test Tube Rack

Constructed of polypropylene, these racks will not rust or deform. They can be frozen or autoclaved and fold flat for storage. Open design is ideal for use in a water bath. An alphanumeric grid is located on the top surface.



## Ordering Information

Cat. No.	Hole Diameter (mm)	Tube Capacity	Format	Dimensions (mm)	Qty/P
K564-03	13	90	6 x 15	105 x 246 x 64	5
K565-03	16	60	5 x 12	105 x 246 x 72	5
K566-03	20	40	4 x 10	105 x 246 x 72	5
K567-04	25	40	4 x 10	125 x 295 x 85	5
K568-03	30	24	3 x 8	112 x 300 x 85	5

# Thermal Cycler Accessories

Accessories are available for use with the MultiGene Gradient Thermal Cycler that includes 0.2 mL tube strips and caps as well as individual 0.2 mL tubes and 0.5 mL PCR tubes. Thermal and aluminum sealing tape for 96-well microplates are also available in packs of 100.



## Ordering Information

Cat. No.	Description	Qty/Pk	Pk/Cs
TC020-02-C	Tubes with domed caps, 0.2 mL, clear	1,000	1
TC050-05F-A	Flat cap PCR tubes, 0.5 mL, assorted colors	1,000	1
TC96-CM-10	Compression mat, silicone	10	1
TC96-TT	Thermal sealing tape for 96-well microplates	100	5



Tube with domed cap  
(Cat. No. TC020-02-C)



## Krystal™ 24 Plates

Krystal 24 Plates feature a 24-well format in the footprint of a standard 96-well microplate.

The plates are black for fluorescence assays and have clear bottoms for use with instruments that read above or below the plate.

The wells of the Krystal 24 plates have a 3.0 mL volume with a large surface area for efficient cell growth. The plates are supplied tissue culture-treated and individually wrapped with lids in packages of 56.

Bar coding is available upon request.



### Ordering Information

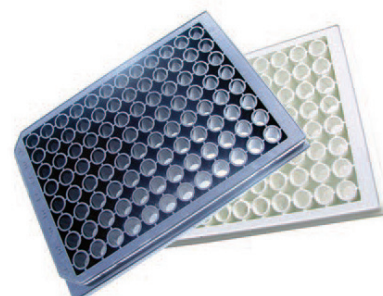
Cat. No.	Description	Qty/Pk
P9835	Krystal 24 plate, 24 x 3.0 mL, black, with lid, tissue culture-treated, individually wrapped	56

## Krystal™ 96 Plates

The polycarbonate Krystal 96 plates are supplied white for luminescence/fluorescence or black for fluorescence assays. Clear well bottoms allow for use with instruments that read above or below the plate.

The plates feature a standard 96-well format with a well volume of 350  $\mu$ L. Both the black and white plates are supplied tissue culture-treated and individually wrapped with lids.

Bar coding is available for all plates upon request.



### Ordering Information

Cat. No.	Description	Qty/Pk
P9802	Krystal plate, 96 x 350 $\mu$ L, white, tissue culture-treated, individually wrapped with lid	100
P9803	Krystal plate, 96 x 350 $\mu$ L, black, tissue culture-treated, individually wrapped with lid	100

## Krystal 2000 Plates

The premium polycarbonate Krystal 2000 plates have been optimized for luminescence and fluorescence assays. A proprietary manufacturing process provides for clear, individual wells in an opaque matrix. The special design of the plate eliminates well-to-well light cross-talk, improving the accuracy and precision of photometric readings.

Krystal 2000 plates are supplied in a 96 x 350 µL well format. Clear wells allow for measurements to be performed with both top and bottom reading instruments. The white matrix provides for maximum reflectivity, allowing high sensitivity luminescence assays. The black matrix absorbs light to minimize background interference in fluorometric assays.

Plates are available as tissue culture-treated. The tissue culture plates are supplied with lids and individually wrapped. All plates are supplied in packages of 100.



### Ordering Information

Cat. No.	Description	Qty/Pk
P9812	Krystal 2000 plate, 96 x 350 µL, white, with lid, tissue culture-treated, individually wrapped	100
P9815	Krystal 2000 plate, 96 x 350 µL, black, with lid, tissue culture-treated, individually wrapped	100

## Assay Plates

Labnet solid assay plates are available in a 96-well format with well volumes ranging from 270 µL to 350 µL.

The assay plates are supplied in white, for luminescence/fluorescence assays, black for fluorescence readings, and clear for colorimetric assays. All of the plates are manufactured from high quality polystyrene. The clear plates are supplied in both polystyrene and polypropylene with flat or round bottom.

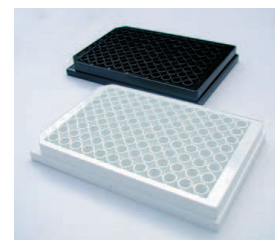
All solid assay plates are supplied in packages of 100.

Bar coding is available for all plates upon request.



### Ordering Information

Cat. No.	Description	Qty/Bag	Bag/Cs
P9725	Plate, 96 x 350 µL, polystyrene, white	25	4
P9728	Plate, 96 x 350 µL, polystyrene, black	25	4
P9732	Plate, 96 x 270 µL, polypropylene, clear, round bottom	10	10
P9734	Plate, 96 x 350 µL, polystyrene, clear, flat bottom	10	10
P9735	Plate, 96 x 270 µL, polystyrene, clear, round bottom	10	10



# Deep Well Microplates

These Deep Well Microplates are ideal for high throughput applications and storage of samples. They are compatible with AccuSeal™ Plate Sealer, sample processing workstations, microplate processing equipment, and many microplate centrifuge rotors.

Plates with 0.5 and 1.0 mL well volumes have round wells while 2.0 mL plates have square wells. All wells have conical bottoms to aid in sample recovery.

All of the plates are available in polypropylene for excellent temperature and chemical resistance. They can be frozen or autoclaved, and when used with sealing mats (available separately), are perfect for freezer storage of samples. Sealing mats are available for the 96-well microplates. The mats seal each well individually.

Plates are RNase-/DNase-free and supplied sterile or nonsterile. All plates fit in the stainless steel freezer storage racks listed in the ordering information below.



## Ordering Information

### 0.5 mL Microplates

Cat. No.	Description	Qty/Pk
P9610	Sealing mat for P9605/P9606, nonsterile	50

### 1.0 mL Microplates

Cat. No.	Description	Qty/Pk
P9616-50	Microplate, 96 x 1.0 mL/round well, polypropylene, sterile	50
P9619-50	Sealing mat for P9616-50 microplate, sterile	50

### 2.0 mL Microplates

Cat. No.	Description	Qty/Pk
P9635	Microplate, 96 x 2.0 mL/square well, polypropylene, nonsterile	50
P9636	Microplate, 96 x 2.0 mL/square well, polypropylene, sterile	50
P9638	Sealing mat for 96 square well microplate, nonsterile	50
P9639	Sealing mat for 96 square well microplate, sterile	50

### 384-well Microplates

Cat. No.	Description	Qty/Pk
P9651	Microplate, 384 x 240 µL, sterile	50



See page 31 for details on the AccuSeal Plate Sealer

To request certificates, please contact us at [www.labnetlink.com](http://www.labnetlink.com).

**Warranty/Disclaimer:** Unless otherwise specified, all products are for research use or general laboratory use only.\* Not intended for use in diagnostic or therapeutic procedures. Not for use in humans. These products are not intended to mitigate the presence of microorganisms on surfaces or in the environment, where such organisms can be deleterious to humans or the environment. Corning Life Sciences makes no claims regarding the performance of these products for clinical or diagnostic applications. \*For a listing of US medical devices, regulatory classifications or specific information on claims, visit [www.corning.com/resources](http://www.corning.com/resources).

*Corning's products are not specifically designed and tested for diagnostic testing. Many Corning products, though not specific for diagnostic testing, can be used in the workflow and preparation of the test at the customers discretion. Customers may use these products to support their claims. We cannot make any claims or statements that our products are approved for diagnostic testing either directly or indirectly. The customer is responsible for any testing, validation, and/or regulatory submissions that may be required to support the safety and efficacy of their intended application.*

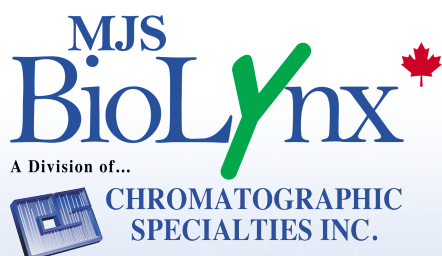
## CORNING

Corning Incorporated  
Life Sciences

[www.corning.com/lifesciences](http://www.corning.com/lifesciences)

For a listing of trademarks, visit [www.corning.com/clstrademarks](http://www.corning.com/clstrademarks). All other trademarks are the property of their respective owners.  
© 2021, 2024 Corning Incorporated. All rights reserved. 12/24 CSLN-PSG-1000 REV1

**Labnet**   
[www.labnetlink.com](http://www.labnetlink.com)



**1-888-593-5969**  
**[biolynx.ca](http://biolynx.ca) • [tech@biolynx.ca](mailto:tech@biolynx.ca)**

