

# Analysis of migration using the Oris™ Cell Migration Assay-TriCoated kit on the Polarstar Omega.

- Knockdown U2OS cells were used with the Platypus® Oris™ Cell Migration system to detect if phosphoinositide metabolism is required for cell migration
- Real-time monitoring of cell migration using a CO<sub>2</sub> gas vented system

## Introduction

The integrin family of proteins are essential for the ability of cells to adhere and to migrate on extracellular matrix components.<sup>1</sup> There are two distinctive groups of integrins within the family that can be identified by their ability to bind to RGD containing extracellular matrix components such as fibronectin and those that act as collagen receptors.<sup>2</sup> The migration of epithelial cell sheets can play an important role during development or wound healing.<sup>3</sup> Phosphoinositides such as PtdIns3,4,5P<sub>3</sub> and PtdIns4,5P<sub>2</sub> are thought to play a role in migration.<sup>4</sup> To study migration in cell lines, scratch assays were typically performed where a confluent monolayer was scratched to remove a strip of cells and then the movement of the cells from the edges into the gap was quantified. This method has several drawbacks including the removal of the ECM components and the rupturing of cells which could all skew the results.

The Oris™ Cell Migration Assays specifically the TriCoated kits presents certain advantages over the traditional migration assay including the ability to test the effect of different ECM components on migration. With the use of siRNA and the Oris™ TriCoated Cell Migration Assay we show here that phosphoinositides are important for migration. We were able to measure migration on different ECM components in real-time using a BMG LABTECH POLARstar Omega fitted with a CO<sub>2</sub> delivery system making it possible to keep cells in the plate reader for up to 48 hours.

## Technology Overview

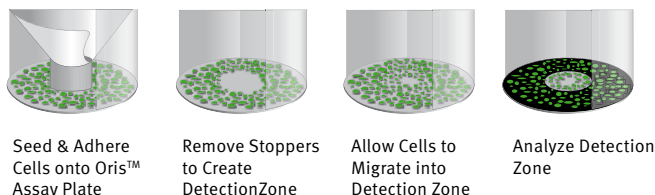


Fig. 1: Oris™ Cell Migration Assay system for Platypus Technologies.

The Oris™ Cell Migration Assay is designed with unique Oris™ Cell Seeding Stoppers, Detection Mask, and Removal Tool. Simply seed the cells in each well, allow them to adhere, remove the Stoppers to create a detection zone, and measure the migration. The Oris™ Cell Migration Assay - TriCoated offers three surfaces (32 wells each of Tissue Culture Treated, Collagen I, and Fibronectin) on a single 96-well microplate. More detailed information can be found on the Platypus website [www.platypustech.com/discoverassay.html](http://www.platypustech.com/discoverassay.html).

## Materials and Methods

- Dil-C16 (Molecular Probes®, Invitrogen)
- siRNA (Dharmacon)
- Oris™ Cell Migration Assay (Platypus Technologies, LLC)
- POLARstar Omega (BMG LABTECH, Germany)



Fig. 2: BMG LABTECH's POLARstar Omega multidetection microplate reader.

Cells were grown in DMEM obtained from Sigma with FCS, pen/strep and glutamate from Invitrogen. Phenolred-free DMEM was obtained from Gibco. The osteosarcoma cell line U2OS was used in these assays.

### Migration assay

U2OS cells were seeded in 6 well plates at 100000 cells/well and transfected the next day with 10 µL 20 µM siRNA per well along with 3µL DharmaFECT. Negative control siRNA was also transfected separately. After overnight incubation, cells were trypsinised, washed and counted. The total amount of cells needed for each assay was suspended in 1mL phenol red-free medium containing 2.5 µM Dil and cells were incubated at 37°C for 30 minutes. Afterwards, cells were centrifuged and resuspended in phenol red-free medium to a concentration of 300000 cells/mL. Gel loading tips were used to deliver 100 µL of all suspension into each well of an Oris™ Cell Migration Assay TriCoated plate. For each condition one well without a Cell Seeding Stopper served as the positive control. The plate was then incubated overnight at 37°C. The following day the Cell Seeding Stoppers were removed from test wells and the medium was flicked out. Subsequently, 200 µL phenol red-free medium was added to each well. The Detection Mask was attached to the bottom of the plate and the plate was put in the pre-warmed plate reader.

For all experiments the fluorescence was measured with excitation at 544 nm and emission at 590 nm. Readings were taken at 20 minute intervals over a period of 48 hours using the bottom optic. The gain was adjusted as 70% of the positive control.

After completion of the assay the data was analysed using the BMG LABTECH supplied MARS Data Analysis Software. First, a baseline correction was performed on the raw data using the data from the 6th to the 9th datapoints. Next, the curve was smoothed using moving averaging over three datapoints. From these curves different kinetic calculations can be done. We used the sum function in the kinetic calculation window to determine the area under the curve for each sample. The sum values were averaged and the population standard deviation was calculated. This data used to generate a graph.

## Results and Discussion

U2OS cells were transfected with a control non-targeting siRNA or with three different siRNA pools targeting specific proteins (A, B, C). Signal curves for tissue culture (TC) treated, Collagen I and Fibronectin coated wells are shown in Fig. 3, 4 and 5.

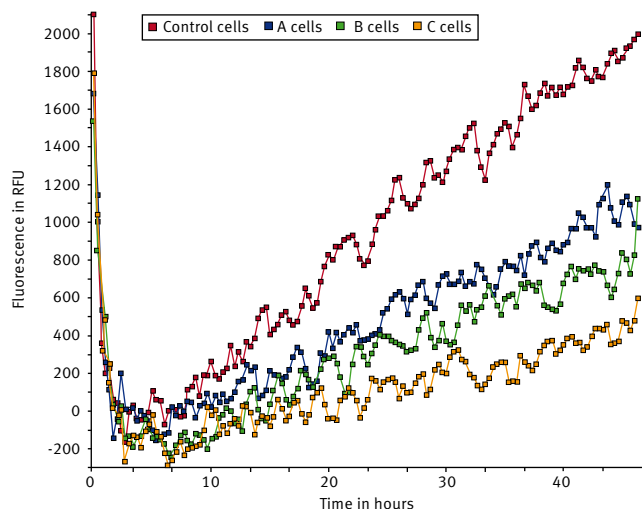


Fig. 3: Signal curves for cells on tissue culture treated surface. (n=6)

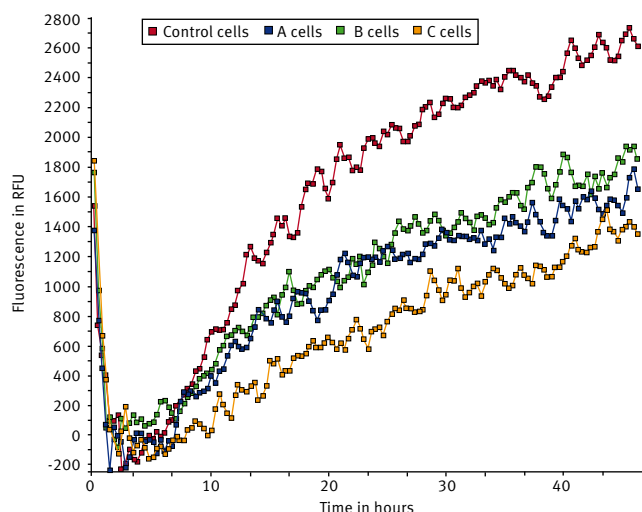


Fig. 4: Signal curves for cells on Collagen I coated surface. (n=6)

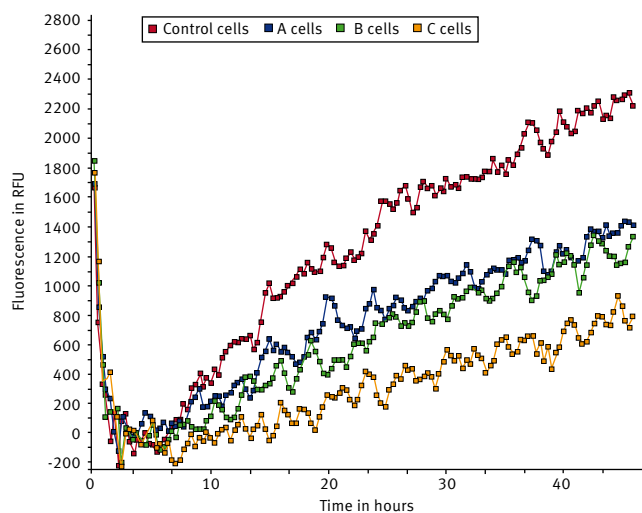


Fig. 5: Signal curves for cells on Fibronectin coated surface. (n=6)

The sum values are represented in Figure 6. The data indicates that U2OS cells transfected with control siRNA migrate the fastest on Collagen I while migration was somewhat reduced in both fibronectin and TC-treated wells. Migration dropped by 34% in cells transfected with siRNA pool A on TC-treated wells while the drop is 41% on Collagen I and 45% on Fibronectin compared to that of the Control conditions. Cells transfected with the siRNA B pool demonstrated a similar drop in migration to siRNA pool A across all surfaces tested. The knockdown of siRNA pool C had a more pronounced effect with migration dropping 75% on TC-treated wells, 53% on Collagen I and 69% on Fibronectin surfaces relative to the control. From this data it is clear that the C siRNA construct inhibits migration to a large extent in cells plated on TC-treated wells and on Fibronectin while there was a somewhat smaller effect in cells on Collagen I.

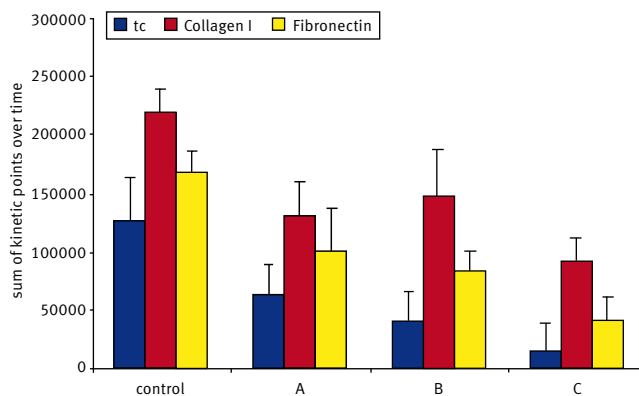


Fig. 6: Graph representing migration of knockdown cells on different surfaces.

## Conclusion

This assay shows that the knockdown of genes A, B, or C has an effect on cell migration. Migration is inhibited on Tissue Culture Treated, Fibronectin, and Collagen I surfaces suggesting that the effect of these genes is not integrin-specific. Since all three proteins knocked down in these cells are involved in phosphoinositide metabolism we can conclude that phosphoinositides are of importance for cell migration.

## References

1. Tamkun, J. W., DeSimone, D. W., Fonda, D., Patel, R. S., Buck, C., Horwitz, A. F. and Hynes, R. O. (1986). *Structure of integrin, a glycoprotein involved in the transmembrane linkage between fibronectin and actin. Cell* **46**, 271-282.
2. Hynes, R. O. (2002). *Integrins: bidirectional, allosteric signaling machines. Cell* **110**, 673-687.
3. Horwitz, R. and Webb, D. (2003). *Cell migration. Curr. Biol.* **13**, R756-R759.
4. Oude Weernink, P. A., Schmidt, M. and Jakobs, K. H. (2004). *Regulation and cellular roles of phosphoinositide 5-kinases. Eur. J. Pharmacol.* **500**, 87-99.

Germany: **BMG LABTECH GmbH** Tel: **+49 781 96968-0**

Australia: **BMG LABTECH Pty. Ltd.** Tel: **+61 3 59734744**  
 France: **BMG LABTECH SARL** Tel: **+33 1 48 86 20 20**  
 Japan: **BMG LABTECH JAPAN Ltd.** Tel: **+81 48 647 7217**  
 UK: **BMG LABTECH Ltd.** Tel: **+44 1296 336650**  
 USA: **BMG LABTECH Inc.** Tel: **+1 877 264 5227**

Internet: **www.bmglabtech.com** **applications@bmglabtech.com**