



BETTER BASICS
LABORBEDARF



Product catalogue

SmartRack® | SmartCase | SmartStand

**Unlock Your
Lab Potential**

Available in Canada from...

MJS
BioLynx 

 CHROMATOGRAPHIC
SPECIALTIES INC.

1-888-593-5969 • biolynx.ca • tech@biolynx.ca



» Products from Better Basics make laboratories safer and more efficient for the future. «

Better Basics Laborbedarf offers the **SmartRack®**, the world's first organisation system for laboratory workstations. **The modular organisation system SmartRack®** improves **order** and the **organisation** of the laboratory workstation **through modularity** and enables,

- **increased availability** of the limited workspace
- **increased process** quality with **increased efficiency** and
- **improved productivity** at **lower costs** as well as
- **increased safety** through the **strengthening of occupational safety**

to be achieved and secured in the long term. The SmartRack® laboratory organisation system - **universally applicable for sitting and standing activities** in the laboratory.

About us	4
Our products	
SmartRack® Modular organization system	5
SmartRack® Configuration	7
SmartRack® Frame size	8
SmartRack® Pre-configurations	10
SmartRack® Single modules	20
SmartRack® Additional accessories	37
SmartCase	40
SmarStand	41
Customizing	42
Item overview	44
Technical information	47

About Us

We help you achieve your goals in research, analysis and laboratory work through laboratory organization

At Better Basics, we develop, manufacture and distribute smart basic equipment for laboratories.

You are always working on new challenges and are looking for a solution for your laboratory organization that

- creates order
- saves space
- increases safety
- increases efficiency
- is modular
- and extendible?

With all these goals, you don't want to lose sight of profitability and cost efficiency? We offer the world's only modular organization system for laboratory environments, where users from the fields of chemistry, biology, biochemistry, food chemistry, pharmacy and medicine alike can work optimally.

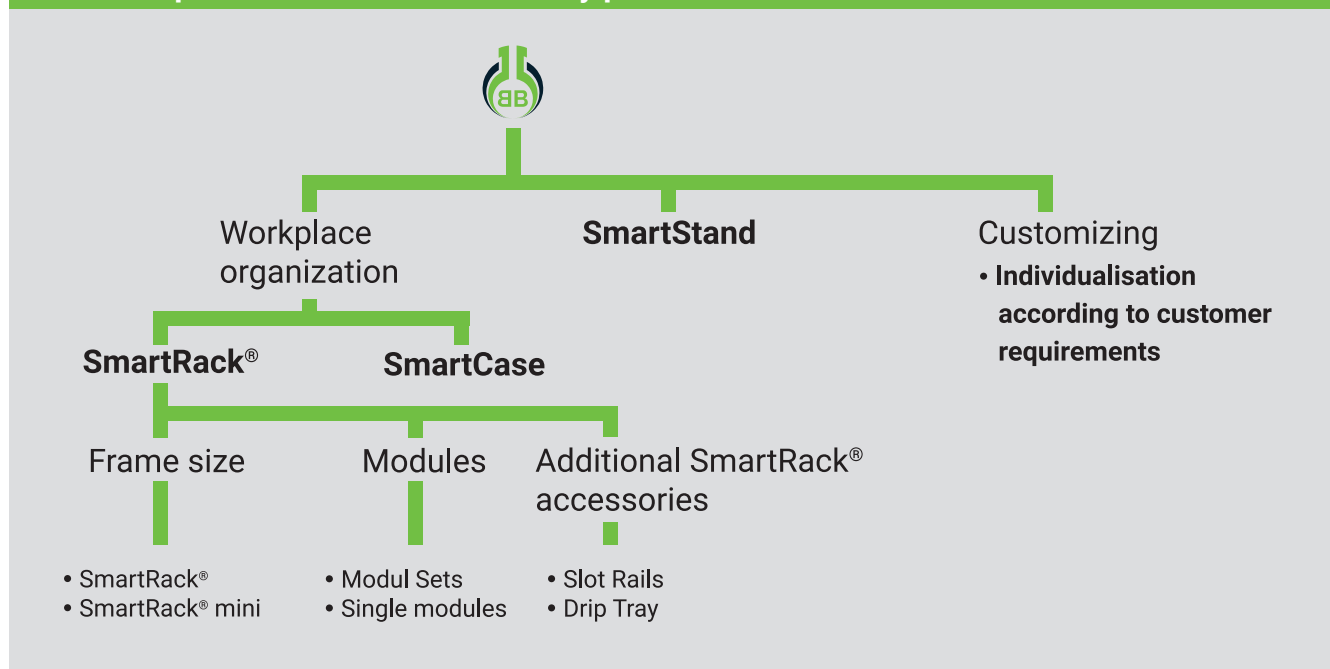
Laboratory organization from the 3D printer

Our innovative products, such as the SmartRack®, a modular organization system for laboratory workstations that creates order and thus improves work safety and increases user efficiency, are manufactured via 3D printing.

That is why we are able to provide you with individual components. Starting with the basic equipment up to superstructures for special applications, our products and modules can be extended and combined as desired.

Together with our partners, we strive to offer you the equipment for a safe and efficient laboratory.

The concept of Better Basics laboratory products



SmartRack® – Modular Organization System

The SmartRack®?

What exactly is the SmartRack®?

The SmartRack® is the world's first laboratory organization system which creates order at the workstation through the structured and secure storage of laboratory glassware and laboratory accessories and, at the same time, generates space savings of up to 80%. This has the advantage that accidents at work are avoided and there is practically no sample confusion. This increases the efficiency of laboratory work, which means a significant impact on the company's success.

Can the SmartRack® be used in every laboratory?

Yes. The SmartRack® is made up of a sturdy metal frame and plastic modules which have been manufactured using the SLS 3D printing process. This makes the SmartRack® flexible to use. **Whether in the fume hood, the safety cabinet or on normal laboratory benches, the SmartRack® can be used on any even work surface.**

How does the SmartRack® work as a laboratory organisation system?

- **The stable body of the SmartRack® is set up at the workstation in the laboratory fume hood, in the laboratory safety cabinet or on the workbench.** No further preparatory work or preparations are necessary for this. Several cross connectors, also called slot rails, are mounted in the SmartRack® frame, into which the module holders can be flexibly inserted.
- **The slot rails can be hooked into the SmartRack® frame at various heights and depths,** which creates maximum flexibility when equipping the SmartRack®.
- **The SmartRack® module holders are hooked into the slot rails using a click mechanism.** In this way, the module holders are securely and reliably fixed and immediately allow you to store laboratory glassware, samples or laboratory work equipment as well as digital work equipment such as barcode scanners and tablets in them.

More safety through more order and up to 80% space savings

Current state WITHOUT SmartRack®



- ✗ Disorder
- ✗ Clutter
- ✗ Accident hazard
- ✗ Inefficiency

Target state WITH SmartRack®



- ✓ Improved Order
- ✓ Free Workspace
- ✓ Improved occupational safety
- ✓ Increased efficiency by 30% through optimized workplace organization

SmartRack® – Modular Organization System

The SmartRack® supports you:

- **As safe as possible, as flexible as necessary:** laboratory users can adjust both the height and the depth of the slot rails. The module holders suspended in the slot rails can be moved horizontally within the slot rail.
- **User-friendly & ergonomic:** The one-handed equipping and removal of the laboratory equipment and samples from the SmartRack®, within the user's gripping range, greatly simplifies and speeds up access.
- **Lean Management and quality management systems such as 5S can be implemented and applied concretely in the laboratory environment with the SmartRack®:** The SmartRack® guarantees more order and cleanliness at the workstation and changes behaviour at the laboratory workstation.
- **Time-saving:** Materials and laboratory equipment are provided exactly where they are processed and needed. So the SmartRack® reduces walking distances and time needed to search throughout the user's laboratory.
- **Space-saving:** By using the room height, the SmartRack® creates new storage areas. So the SmartRack® multiplies the available working space in the gripping area, reaching area and stretching area.

Saving space - new labs



Each SmartRack® saves €5.200 in investment costs for the construction of a new laboratory, because by using a SmartRack®, a space saving of about 1 m² laboratory space can be assumed.

www.new-labs.better-basics-laborbedarf.de

Efficiency



By using the SmartRack®, an increase in efficiency of up to 10% is achieved by optimising working hours during the test execution as well as during assembly, disassembly and cleaning. The SmartRack® is therefore the ideal system for supporting LEAN management models in laboratories.

www.efficiency.better-basics-laborbedarf.de

Saving space - existing labs



The SmartRack® enables a more efficient use of space in existing laboratories and therefore up to 80% space savings at the laboratory workstation, which in turn creates free work space.

www.existing-labs.better-basics-laborbedarf.de

Occupational safety



The world's only laboratory organization system as your guarantor for safety and ergonomics in the laboratory workplace. The SmartRack® meets all applicable specifications in the laboratory area according to DIN, DGUV and TRGS.

www.safety.better-basics-laborbedarf.de

SmartRack® – Configuration

1. Selection of pre-configurations

Basic Equipment, Biology, Chemistry, Pipetting Set, Consumables, etc.



OR

2. Customised configuration

2.1 Frame size and frame type selection:

SmartRack® classic (mini) or SmartRack® primus (mini)



2.2. Selection of individual modules:

holders and storage box and storage box inserts



2.3 Selection of additional SmartRack® accessories (optional):

if required further slot rail, drip tray or protective cover



Configuration of a personalized SmartRack® (article number 01704 and 01707), SmartRack® (left) plus modules (right)



Image above: SmartRack®



Images above: Selection of modules

Each SmartRack® classic (article number 01704) or SmartRack® classic mini (article number 01707) is already delivered ex works with the following accessories

- 1 x Pair of feet
- 1 x Drip tray
- 3 x Slot rails each with handles
- 1 x Frame

SmartRack® | Frame size and frame type

SmartRack® classic



The SmartRack® classic was developed for use at many different laboratory workstations and especially for work in fume hoods. The SmartRack® classic mini is specially designed for work in safety cabinets. It consists of an aluminium frame with a black epoxy-polyester-based powder coating. Every third slot rail holder on both sides of the SmartRack® classic frame has a recess at the front to make it easier to align the slotted rails horizontally.

The SmartRack® classic mini includes the following components:

- 1 x frame incl. one pair of rear shortenable feet with tray holder
- 3 x slot rails each with handles
- 1 x drip tray

Size comparison SmartRack® classic (left) and SmartRack® classic mini (right):



Item	Type	PU	Item no.
SmartRack® classic	635 x 615 x 265 mm (WxHxD)	1	01704
SmartRack® classic mini	420 x 380 x 265 mm (WxHxD)	1	01707

If you need a SmartRack® with special size requirements or custom brackets, please contact us at contact@better-basics.de.

SmartRack® | Frame size and frame type

SmartRack® primus



The SmartRack® primus is the affordable entry-level version into the smart world of laboratory equipment from Better Basics. It was developed for use at many different laboratory workstations and in particular for work at the fume hood. The SmartRack® primus mini is specially designed for working on the safety cabinet. It consists of an uncoated, polished aluminium frame. Every third slot rail holder on both sides of the SmartRack® primus frame has a recess at the front to make it easier to align the slotted rails horizontally.

The SmartRack® primus comprises the following components:

- 1 x frame incl. one pair of aluminium feet
- 2 x slotted rails incl. two handles on each side

Size comparison SmartRack® primus (left) and SmartRack® primus mini (right):



Item	Type	PU	Item no.
SmartRack® primus	635 x 615 x 265 mm (WxHxD)	1	01711
SmartRack® primus mini	420 x 380 x 265 mm (WxHxD)	1	01712

If you need a SmartRack® with special size requirements or custom brackets, please contact us at contact@better-basics.de.

SmartRack® | Pre-configurations

SmartRack® mini Pipetting Set



The SmartRack® mini Pipetting Set has been specially designed for working with liquids in small quantities and includes the following components (item number of the individual components in brackets for better understanding):

9 components:

- 1 x SmartRack® classic mini (Item no. 01707)
- 1 x Holder for bin liner (Item no. 01202)
- 1 x Holder for pipettes - for 3 pipettes with hook (Item no. 01145)
- 2 x Holder for pipette tip boxes (Item no. 01147)
- 2 x Holder for laboratory screw top bottles, 100 - 1000 ml (GL45) (Item no. 01122)
- 2 x Holder for well plates (Item no. 01125)

Detailed views of the individual components included:



Item no. 01707



Item no. 01202



Item no. 01145



Item no. 01147



Item no. 01122



Item no. 01125

Trash bag, pipettes, pipette tip boxes, laboratory screw top bottle and well plates not included in scope of delivery

Item	PU	Item no.
Price of the individual modules:	9	var.
Price advantage:		
SmartRack® mini Pipetting Set, bundle price:	1	01512

SmartRack® Basic Equipment



The SmartRack® Basic Equipment is a basic set for organising basic accessories in everyday laboratory use and includes the following components (item number of the individual items in brackets for better understanding):

6 components:

- 1 x SmartRack® classic (Item no. 01704)
- 1 x Holder for bin liner (Item no. 01202)
- 1 x Storage box (Item no. 01142)
- 1 x Holder for kitchen roll (Item no. 01162)
- 1 x Holder for glove / tissue boxes (Item no. 01143)
- 1 x Holder for wash bottles, for 500 ml (up to Ø 75 mm) (Item no. 01146)

Detailed views of the individual components included:



Item no. 01704



Item no. 01202



Item no. 01142



Item no. 01162



Item no. 01143



Item no. 01146

Small accessories, trash bag, tissue box, wash bottle and kitchen roll not included in scope of delivery

Item	PU	Item no.
Price of the individual modules:	6	var.
Price advantage:		
SmartRack® Basic Equipment, bundle price:	1	01506

SmartRack® | Pre-configurations

SmartRack® Starter Set Biology



The SmartRack® Starter Set Biology has been specially designed for work in the field of biology and includes the following individual components (item number of the individual component in brackets for better understanding):

8 components:

- 1 x SmartRack® classic (Item no. 01704)
- 2 x Holder for laboratory screw top bottles, 100 - 1000 ml (GL 45) (Item no. 01122)
- 2 x Storage box (Item no. 01142)
- 1 x Holder for pipettes - for 3 pipettes with hook (Item no. 01145)
- 1 x Holder for pipette tip boxes (Item no. 01147)
- 1 x Holder for microliter syringes (Item no. 01155)

Detailed views of the individual components included:



Item no. 01704



Item no. 01122



Item no. 01142



Item no. 01145



Item no. 01147



Item no. 01155

Laboratory screw top bottle, pipettes, pipette tip box and microliter syringes not included in scope of delivery

Item	PU	Item no.
Price of the individual modules:	8	var.
Price advantage:		
SmartRack® Starter Set Biology, bundle price:	1	01507

SmartRack® Starter Set Chemistry



The SmartRack® Starter Set Chemistry has been specially designed for work in the field of chemistry and includes the following components (item number of the individual components in brackets for better understanding):

8 components:

- 1 x SmartRack® classic (Item no. 01704)
- 2 x Holder for glassware with ST14, plus closure (Item no. 01112)
- 2 x Holder for glassware with ST29, plus closure (Item no. 01115)
- 2 x Holder for chromatography column, Ø 25 - 35 mm (Item no. 01107)
- 1 x Storage box (Item no. 01142)

Detailed views of the individual components included:



Item no. 01704



Item no. 01112



Item no. 01115



Item no. 01107



Item no. 01142

Glassware and chromatography column not included in scope of delivery

Item	PU	Item no.
Price of the individual modules:	8	var.
Price advantage:		
SmartRack® Starter Set Chemistry, bundle price:	1	01508

SmartRack® for Consumables



The SmartRack® for Consumables has been specially designed for the provision of consumables at the laboratory workplace and comprises the following components (item number of the individual components in brackets for better understanding):

12 components:

- 1 x SmartRack® classic (Item no. 01704)
- 1 x Dispenser for Parafilm® rolls (Item no. 01171)
- 1 x Dispenser for adhesive tapes (Item no. 01172)
- 3 x Holder for glove / tissue boxes (Item no. 01143)
- 1 x Holder for bin liner (Item no. 01202)
- 3 x Holder for wash bottles, for 500 ml (up to Ø 75 mm) (Item no. 01146)
- 1 x Holder for kitchen roll (Item no. 01162)
- 1 x Slot rail with handles (Item no. 01601)



SmartRack® | Pre-configurations

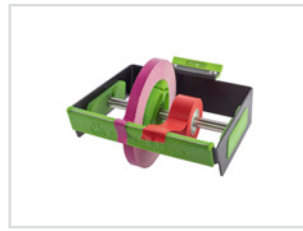
Detailed views of the individual components included:



Item no. 01704



Item no. 01171



Item no. 01172



Item no. 01143



Item no. 01202



Item no. 01146



Item no. 01162



Item no. 01601

Parafilm® rolls, adhesive tapes, glove / tissue boxes, bin liner, wash bottles and kitchen roll not included in scope of delivery

Item	PU	Item no.
Price of the individual modules:	12	var.
Price advantage:		
SmartRack® for Consumables, bundle price:	1	01509

SmartRack® for Life Science



The SmartRack® for Life Science has been specially designed for work in the fields of biology, biomedicine, biotechnology as well as special fields of biology and for handling liquids in small quantities and preparing and storing samples for later analysis. It includes the following components (item number of each component in brackets for better understanding):

16 components:

- 1 x SmartRack® classic (Item no. 01704)
- 1 x Holder for bin liner (Item no. 01202)
- 1 x Storage box (Item no. 01142)
- 1 x Storage box insert - for small accessories (Item No. 01148)
- 1 x Storage box insert - for microreaction vessels, 20 x 2 ml (Item no. 01130)
- 1 x Storage box insert - for centrifuge tubes, 6 x 15 ml, 4 x 50 ml (Item no. 01102)
- 2 x Holder for laboratory screw top bottles, 100 - 1000 ml (GL45) (Item no. 01122)
- 2 x Holder for well plates (Item no. 01125)
- 1 x Holder for wash bottles, for 500 ml (up to Ø 75 mm) (Item no. 01146)
- 1 x Holder for pipettes - for 3 pipettes with hook (Item no. 01145)
- 2 x Holder for pipette tip boxes (Item no. 01147)
- 1 x Dispenser for Parafilm® rolls (Item no. 01171)
- 1 x Slot rail with handles (Item no. 01601)



SmartRack® | Pre-configurations

Detailed views of the individual components included:



Item no. 01704



Item no. 01202



Item no. 01142



Item no. 01148



Item no. 01122



Item no. 01125



Item no. 01146



Item no. 01145



Item no. 01147



Item no. 01171



Item no. 01130



Item no. 01102



Item no. 01601

Bin liner, small accessories, laboratory screw top bottles, well plates, wash bottle, pipettes, pipette tip boxes, parafilm® roll, microreaction vessels and centrifuge tubes not included in scope of delivery

Item	PU	Item no.
Price of the individual modules:	16	var.
Price advantage:		
SmartRack® for Life Science, bundle price:	1	01510

SmartRack® for Chromatography



The SmartRack® for Chromatography has been specially designed for substance separation tasks by means of column chromatography and comprises the following components (item number of the individual components in brackets for better understanding):

17 components:

- 1 x SmartRack® classic (Item no. 01704)
- 1 x Storage box (Item no. 01142)
- 1 x Storage box insert – for small accessories (Item no. 01148)
- 1 x Storage box insert - for sample containers and test tubes, 12x Ø 10 - 20 mm (Item no. 01160)
- 1 x Storage box insert - for sample containers and test tubes, 20x Ø 3 - 10 mm (Item no. 01161)
- 6 x Holder for chromatography column, Ø 25 - 35 mm (Item no. 01107)
- 1 x Holder for wash bottles, for 500 ml (up to Ø 75 mm) (Item no. 01146)
- 1 x Holder for microliter syringes (Item no. 01155)
- 2 x Holder for laboratory screw top bottles, 100 - 1000 ml (GL45) (Item no. 01122)
- 1 x Holder for glove / tissue boxes (Item no. 01143)
- 1 x Slot rail with handles (Item no. 01601)



SmartRack® | Pre-configurations

Detailed views of the individual components included:



Item no. 01704



Item no. 01142



Item no. 01107



Item no. 01146



Item no. 01155



Item no. 01122



Item no. 01148



Item no. 01160



Item no. 01161



Item no. 01143



Item no. 01601

Chromatography columns, wash bottle, microliter syringes, laboratory screw top bottles, small accessories, sample containers and test tubes, glove / tissue box not included in scope of delivery

Item	PU	Item no.
Price of the individual modules:	17	var.
Price advantage:		
SmartRack® for Chromatography, bundle price:	1	01511

SmartRack® | Single modules

Storage box



The module is the basis for storing and fixating various smaller laboratory equipment. The storage box can hold a maximum of three storage box inserts, which can be arranged and combined as required. Alternatively, the storage box can also be used without storage box inserts.

Item	Type	PU	Item no.
Storage box	for 2 storage box inserts	1	01185
Storage box	for 3 storage box inserts	1	01142

Storage box insert – for small accessories



The module can be inserted as required into the storage box and enables easy storage and fixation of small accessories (e.g. pens, spatulas or tweezers).

Storage box and small accessories not included in scope of delivery

Item	PU	Item no.
Storage box insert – for small accessories	1	01148

Storage box insert – for microreaction vessels



The module can be inserted as required into the storage box and enables easy storage and fixation of microreaction vessels.

Storage box and microreaction vessels not included in scope of delivery

Item	Type	PU	Item no.
Storage box insert – for microreaction vessels	32 x 0,5 ml	1	01104
Storage box insert – for microreaction vessels	20 x 2 ml	1	01130

Storage box insert – for sample containers and test tubes



The module can be inserted as required into the storage box and enables easy storage and holding of sample containers and test tubes. It is equipped with a spring mechanism that provides a secure hold for sample vials and test tubes of different diameters.

Storage box, sample containers and test tubes not included in scope of delivery

Item	Type	PU	Item no.
Storage box insert – for sample containers and test tubes	20 x Ø 3 - 10 mm	1	01161
Storage box insert – for sample containers and test tubes	15 x Ø 8 - 12 mm	1	01181
Storage box insert – for sample containers and test tubes	12 x Ø 10 - 20 mm	1	01160
Storage box insert – for sample containers and test tubes	8 x Ø 18 - 22 mm	1	01182
Storage box insert – for sample containers and test tubes	6 x Ø 20 - 30 mm	1	01159

Storage box insert – for centrifuge tubes



The module can be inserted as required into the storage box and enables easy storage and fixation of centrifuge tubes.

Storage box and centrifuge tubes not included in scope of delivery

Item	Type	PU	Item no.
Storage box insert – for centrifuge tubes	12 x 15 ml	1	01128
Storage box insert – for centrifuge tubes	6 x 15 ml, 4 x 50 ml	1	01102
Storage box insert – for centrifuge tubes	6 x 50 ml	1	01129

Barcode scanner holder



The module enables easy attachment of a barcode scanner.

Barcode scanner not included in scope of delivery

Item	Type	PU	Item no.
Barcode scanner holder	suitable for scanners such as Newland NLS-HR22 and Aplic 304674	1	01163

Holder for chromatography column



The module allows effortless attachment of chromatography columns. The bracket adjusts to the column circumference via a snap-in mechanism to provide a secure fit. If the length of the suspended equipment exceeds 15 cm, we recommend the use of additional holder modules, stacked in the required number, to ensure the stability of the set-up. Both the outside of the chromatography column and the silicone covers of the chromatography column holders must be clean and free of dust and grease.

Chromatography column not included in scope of delivery

Item	Type	PU	Item no.
Holder for chromatography column	Ø 5 - 10 mm	1	01177
Holder for chromatography column	Ø 10 - 15 mm	1	01176
Holder for chromatography column	Ø 15 - 25 mm	1	01165
Holder for chromatography column	Ø 25 - 35 mm	1	01107
Holder for chromatography column	Ø 35 - 46 mm	1	01139
Holder for chromatography column	Ø 46 - 56 mm	1	01179

Holder for Erlenmeyer flasks



The module allows easy attachment of conical flasks with a beaded rim. The curved front means the conical flask is securely fixed in the module and is protected against falling out.

Erlenmeyer flask not included in scope of delivery

Item	Type	PU	Item no.
Holder for Erlenmeyer flasks	Erlenmeyer flasks, Wide neck 25 ml, 100 ml, Erlenmeyer flasks, Narrow neck 250 ml, 500 ml	1	01108
Holder for Erlenmeyer flasks	Erlenmeyer flasks, Wide neck 250 ml, 500 ml, 1000 ml, Erlenmeyer flasks, Narrow neck 2000 ml, 3000 ml, 5000 ml	1	01140

Holder for glassware with standard taper



The module allows easy attachment of glassware with standard ground joint ST14. The specially shaped recess prevents the glassware from falling out. Please note the information on standard ground joint tolerances of various standard taper (ST) on page 47.

Glassware not included in scope of delivery

Item	PU	Item no.
Holder for glassware with ST14	1	01111
Holder for glassware with ST29	1	01114

Holder for glassware with standard taper, plus closure



The module corresponds to the module holder for glassware with ST14, but is also equipped with a rotatable locking ring that protects glassware with standard joint ST14 against falling out. Please note the information on standard ground joint tolerances of various standard taper (ST) on page 47.

Glassware not included in scope of delivery

Item	PU	Item no.
Holder for glassware with ST14, plus closure	1	01112
Holder for glassware with ST29, plus closure	1	01115

Holder for glassware with standard taper, extended



The module corresponds in design and function to the module holder for glass devices with ST14. However, the extended version is particularly suitable for easily hanging particularly large round-bottomed flasks or separating funnels, for example. Please note the information on standard ground joint tolerances of various standard taper (ST) on page 47.

Glassware not included in scope of delivery

Item	PU	Item no.
Holder for glassware with ST14, extended	1	01113
Holder for glassware with ST29, extended	1	01116

Holder for glove / tissue boxes



The module allows easy attachment of glove or tissue boxes. The width of the bracket can be adjusted as required and adapted to the size of different boxes. Being able to pull out these consumables towards you makes it easy to remove them even when the box is low.

Glove / tissue box not included in scope of delivery

Item	PU	Item no.
Holder for glove / tissue boxes	1	01143

Holder for cannula disposal container



The module enables the simple insertion of a cannula discharge box.

Cannula disposal container not included in scope of delivery

Item	PU	Item no.
Holder for cannula disposal container	1	01174

Holder for kitchen roll



The module enables easy hanging of kitchen rolls. The roll can rotate in the module, ensuring single or multiple sheets can be unrolled easily.

Kitchen roll not included in scope of delivery

Item	PU	Item no.
Holder for kitchen roll	1	01162

Holder for cuvettes



The module makes it easy to store and fix cuvettes. Due to the special shape of the recesses, the side surfaces of the cuvette do not come into direct contact with the holder. The dimensions given refer to the layer thickness of the cuvette.

Cuvettes not included in scope of delivery

Item	Type	PU	Item no.
Holder for cuvettes	10 x (10 mm x 10 mm)	1	01183

Holder for laboratory screw top bottles



The module enables easy attachment of laboratory screw top bottles. The module is equipped with a rotatable locking ring, which provides additional protection for the laboratory screw top bottles against falling out.

Laboratory screw top bottle not included in scope of delivery

Item	Type	PU	Item no.
Holder for laboratory screw top bottles	10 - 25 ml (GL25)	1	01120
Holder for laboratory screw top bottles	50 ml (GL32)	1	01121
Holder for laboratory screw top bottles	100 - 1000 ml (GL45)	1	01122

Holder for microliter syringes



The module allows three microliter syringes to be safely attached. The snap-in mechanism provides a secure hold for the attached microliter syringes. The shape of the module shields the needles of the microliter syringes and thus protects the user against accidental contact with the tip of the needle.

Microliter syringes not included in scope of delivery

Item	PU	Item no.
Holder for microliter syringes	1	01155

Holder for bin liner



The module allows easy attachment of bin liners for small waste. Contamination can be prevented by disposing of waste directly where you are working.

Bin liner not included in scope of delivery

Item	PU	Item no.
Holder for bin liner	1	01202

Holder for pipettes



The module allows easy attachment of pipettes. The pipette tips are not affected and therefore not contaminated.

Pipettes not included in scope of delivery

Item	Type	PU	Item no.
Holder for pipettes	for Eppendorf Multipipette® E3 / E3x / stram / Xstream	1	01189
Holder for pipettes	for Eppendorf Reference®	1	01164
Holder for pipettes	for Eppendorf Reference® 2	1	01168
Holder for pipettes	for Gilson® PIPETMAN® Classic / G	1	01166
Holder for pipettes	for INTEGRA VIAFLOW or for INTEGRA VOYAGER	1	01184

Holder for pipettes with hook



The module allows easy attachment of up to three pipettes with hook. The pipette tips are not affected and therefore not contaminated.

Pipettes not included in scope of delivery

Item	PU	Item no.
Holder for 2 pipettes with hook	1	01180
Holder for 3 pipettes with hook	1	01145

Holder for pipette tip boxes



The module enables easy attachment of pipette tip boxes from different manufacturers and of different sizes. Due to a magnet integrated in the module and a magnetic stainless steel round inserted by the user into the pipette tip box, the secure hold of the pipette tip box is ensured. Additional stainless steel rounds can be ordered for working with multiple pipette tip boxes.

Pipette tip box not included in scope of delivery

Item	PU	Item no.
Holder for pipette tip boxes	1	01147
Stainless steel round for insertion into pipette tip boxes	1	01167

Holder for pipetting aid



The module enables the safe attachment of a pipetting aid.

Pipetting aid not included in scope of delivery

Item	Type	PU	Item no.
Holder for pipetting aid	for Eppendorf Easypet® 3	1	01203
Holder for pipetting aid	for HIRSCHMANN® pipetus®	1	01188
Holder for pipetting aid	for INTEGRA Pipetboy 2	1	01154
Holder for pipetting aid	for INTEGRA Pipetboy pro	1	01156
Holder for pipetting aid	for BRAND accu-jet® pro	1	01178
Holder for pipetting aid	for BRAND accu-jet® S	1	01157
Holder for pipetting aid	for Thermo Scientific Matrix	1	01186
Holder for pipetting aid	for TPP Turbo-Fix	1	01207
Holder for pipetting aid	for VWR® Powerpette Pro	1	01199

Holder for separating funnel / shaking funnel



The module allows easy attachment of separating funnels / shaking funnels.

Note:

The diameter of the separating funnel / shaking funnel is measured at its widest point

Separating funnel / shaking funnel not included in scope of delivery

Item	Type	PU	Item no.
Holder for separating funnel / shaking funnel	Ø 45 - 85 mm	1	01152
Holder for separating funnel / shaking funnel	Ø 85 - 105 mm	1	01149
Holder for separating funnel / shaking funnel	Ø > 105 mm	1	01153

Holder for sensor systems



The module enables the safe attachment of a sensor system

Sensor system not included in scope of delivery

Item	Type	PU	Item no.
Holder for sensor systems	for essentim spider	1	01205

Holder for open fronted storage bins



The module enables the safe attachment of open fronted storage bins or stacking boxes with a mounting edge, which typically serves as a holding device for wall rails and shelving systems.

Open fronted storage bins not include in scope of delivery

Item	Type	PU	Item no.
Holder for open fronted storage bins	Suitable for storage bins such as SCHÄFER LF110, LF210, LF211, LF220	1	01158

Holder for wash bottles



The module enables easy attachment of wash bottles. The module can also be used to store screw top bottles of similar sizes.

Wash bottle not included in scope of delivery

Item	Type	PU	Item no.
Holder for wash bottles	for 500 ml (up to \varnothing 79 mm)	1	01146
Holder for wash bottles	for 1000 ml (up to \varnothing 99 mm)	1	01173

Holder for tablet



The module allows easy attachment of tablets in portrait and landscape format. The tilted angle ensures good visibility and good usability of the display. The module can be adjusted to different tablet sizes via a locking mechanism, which can be adjusted in increments.

Tablet not included in scope of delivery

Item	PU	Item no.
Holder for tablet	1	01124

Holder for well plates



Well plates can be inserted into the module and also stacked. The horizontal orientation ensures optimal storage, e.g. of cell cultures.

Well plate not included in scope of delivery

Item	PU	Item no.
Holder for well plates	1	01125

SmartRack® | Single modules

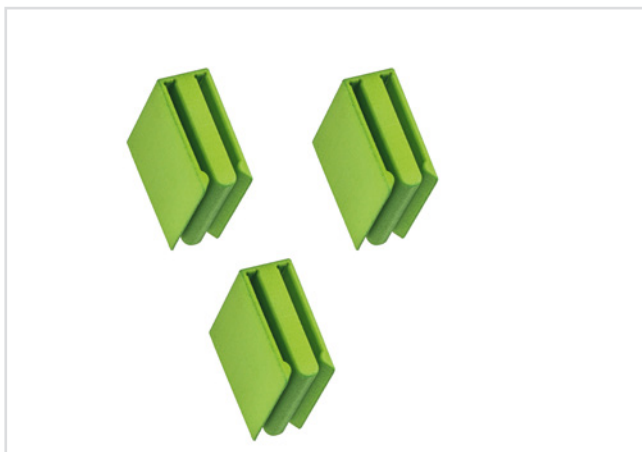
Shelf



The shelf can be used to store laboratory equipment, glassware and consumables up to a total weight of 3 kg, providing additional storage space for those items that cannot be stored in the SmartRack® support modules.

Item	PU	Item no.
Shelf	1	01193

Back-to-back connectors



The back-to-back connectors for the SmartRack® enable two SmartRack to be securely connected and thus used as a isolated solution. With the rear foot sections removed, two SmartRack can be securely connected by simply attaching the connectors to the horizontal or diagonal braces of the frame rear panel. A set consists of three individual back-to-back connectors.

Item	PU	Item no.
Back-to-back connectors for SmartRack®	1	01614

Dispenser for adhesive tapes



The tape or labeling tape dispenser is designed to hold up to 6 rolls with a core hole diameter of approximately 25 mm (1 inch) or approximately 76 mm (3 inches) with a total width of up to 160 mm. It is made of powder-coated steel, polyamide 12 and stainless steel. The serrated cutting device for easy cutting of the adhesive tape or labeling tape facilitates one-handed handling in the laboratory and a clean cut. The dispenser for adhesive tape or labeling tape is easy to clean. Two cores are included to accommodate rolls with a core hole diameter of approx. 25 mm (1 inch) or approx. 76 mm (3 inches).

Adhesive tapes not included in scope of delivery

Item		PU	Item no.
Dispenser for adhesive tapes		1	01172
Additional core for adhesive tape dispenser	approx. 25 mm (1 inch) / approx. 51 mm (2 inch)	1	01198
Additional core for adhesive tape dispenser	approx. 25 mm (1 inch) / approx. 76 mm (3 inch)	1	01175

Dispenser for Parafilm® rolls



The dispenser for Parafilm® is designed to hold two standard rolls (50 mm) or one double roll (100 mm). It is made of aluminium and polyamide 12 and offers the possibility of clean and safe storage as well as easy removal of Parafilm® sealing film.

Parafilm® rolls not included in scope of delivery

Item		PU	Item no.
Dispenser for Parafilm® rolls		1	01171

Dispenser for glass pasteur pipettes



The dispenser for glass pasteur pipettes is made out of aluminium and polyamide 12 and polypropylene, has a front level indicator and holds up to 300 unpacked pasteur pipettes of a length of 150 mm or 230 mm. The dispenser is easy to clean and offers the possibility of hygienic storage and individual removal of the pasteur pipettes from the dispenser. Filling is performed via a hinged lid.

Pasteur pipettes not included in scope of delivery

Item	Type	PU	Item no.
Dispenser for glass pasteur pipettes	150 mm	1	01169
Dispenser for glass pasteur pipettes	230 mm	1	01170

Stand rod adapter ø 12 mm



The stand rod adapter is attached to the slot rail like a module and provides an additional option for securing the SmartRack®. The supplied stand rod can be inserted into the stand rod adapter from all three directions in space and then fixed to an existing stand assembly, or other permanently installed stands in the laboratory. This virtually eliminates the possibility of the SmartRack® tipping over.

Item	PU	Item no.
Stand rod adapter ø 12 mm	1	01126

Drip tray



The drip tray prevents the spread of liquids. In case of contamination, the drip tray can be easily removed from the SmartRack® and cleaned.

Item	Type	PU	Item no.
Drip tray	for SmartRack®	1	01603
Drip tray mini	for SmartRack® mini	1	01604

Lid for storage box



The lid for the storage box is an optional extension to the storage box. Please note that upgrading the storage box with a lid is only possible for the storage box from order year 2024. To use the storage box with storage box inserts, the lid must be removed or the storage box must be used with the lid open.

Item	Type	PU	Item no.
Lid for storage box	for 2 storage box inserts	1	01924
Lid for storage box	for 3 storage box inserts	1	01923

Lid for bin liner holder



The lid for the bin liner holder (01202) is an optional extension to the bin liner holder. Please note that it is only possible to add a lid to the bin liner holder for bin liner holders ordered from 2024 onwards.

Item	PU	Item no.
Lid for bin liner holder	1	01192

Slot rail with handles



The slot rail can be used in many different positions in the SmartRack®. A larger number of slot rails offers more options for placing modules through an optimal vertical arrangement, providing more scope for customizing the structure of the SmartRack® and adapting the module arrangement to the individual needs of each user.

Item	Type	PU	Item no.
Slot rail with handles	for SmartRack®	1	01601
Slot rail mini with handles	for SmartRack® mini	1	01602

Protective cover for SmartRack®



Picture left: Version with zippers

The protective hood made of fiber-reinforced polyethylene (mesh film), which was specially designed for the SmartRack®, reliably protects the SmartRack® against dirt and dust particles as well as providing splash protection against aggressive liquids. The dust and particle protection hood is available in two versions that do not differ in size. As a basic model and as a model with two zippers on the edges of the front. For regular removal of the dust and particle protection hood and for use in unfavorable height conditions, we recommend choosing the model with zippers.

SmartRack® not included in scope of delivery



Picture left: Version without zippers



Picture left: SmartRack® mini cover with zippers

Item	Type	PU	Item no.
Protective cover for SmartRack®	with zipper	1	01609
Protective cover for SmartRack®	without zipper	1	01608
Protective cover for SmartRack® mini	with zipper	1	01613
Protective cover for SmartRack® mini	without zipper	1	01612

SmartCase

SmartCase



SmartRack® not included, other equipment not included

The SmartCase is designed to transport and store the SmartRack®, a modular organization system for laboratory workstations. Its aluminium case safely protects a SmartRack® inside and its contents from light and other environmental influences. The SmartCase consists of a lower part with four castors into which a SmartRack® can be placed. The upper part of the SmartCase has a cushion on the inside, which serves to fix the SmartRack® in the SmartCase as soon as the SmartCase is closed by the tension locks. This prevents the SmartRack® from slipping or tipping over. The SmartCase has a self-acting valve system which can be used to change the atmosphere inside the SmartCase by means of an external gas supply. This allows, for example, the temporary generation of a low-oxygen atmosphere in the SmartCase, which creates an additional safety level when transporting oxygen-sensitive, highly flammable substances or substances that spontaneously ignite in air. For further information on the durability of the atmosphere exchange in the SmartCase, please contact us at contact@better-basics.de.

The SmartCase includes the following components:

- A bottom section with four casters, four tension locks and an automatic gas outlet valve system.
- A top part with a handle, four put-on aids and an automatic gas inlet valve system
- A connector for connecting gas hoses of various diameters to the SmartCase

Item	PU	Item no.
SmartCase	1	02101

SmartStand for well plates



The SmartStand for Well Plates can be rotated 360 degrees, allowing the well plates to be filled from either side and the alignment to be adjusted quickly. The incrementally adjustable tilt of up to 40° makes the wells much easier to see from the user's perspective, which supports precise and ergonomic work when pipetting.



Well plate not included in scope of delivery

Item	PU	Item no.
SmartStand for well plates	1	09001

Customizing

Individualisation according to customer requirements

On request, we can customise our SmartRack® and its modules entirely according to your needs. Both the width and the height of the SmartRack® frame can be adjusted. If you need a wider or narrower version of the SmartRack® frame in your laboratory, your fume cupboard, on your safety workbench or in your experimental environment, we will manufacture the SmartRack® individually according to your requirements. Of course, you will also receive the corresponding slot rails in the appropriate length and in the quantity you require.

Our 3D printing process enables us to create every conceivable shape and size of module and holder for any laboratory glassware as well as any work equipment to customer specifications. Whether you need a specific function or simply special dimensions, we have the technical expertise to meet your requirements.

This means that the modules and mounts we create are tailored precisely to your needs and requirements.

In addition to the high precision and accuracy of our work, we also offer fast delivery times. Contact us today to find out more about how we can help you to improve the storage of your laboratory glassware and work equipment, making your work more efficient and safer.

We look forward to working with you to agree beforehand the costs of designing and manufacturing your custom modules.

To do so, simply contact us at

www.customizing.better-basics-laborbedarf.de

Examples for realised customisations based on customer requests

Special frame sizes

SmartRack® frame - customisable in width as well as height



SmartRack® frame - extra wide

For a special requirement we manufactured an extra wide frame of the SmartRack®. Due to the width, this SmartRack® makes optimal use of the working space in our customer's laboratory.

Special modules for laboratory accessories and laboratory glassware

Holder for special glassware



Double holder for glassware with ST10

For a project, a customer needed a double holder for glassware with standard ground joint ST10 to be easily hung next to each other. The specially shaped recess prevents the glassware from falling out.

Of course, adaptations of this kind are also conceivable for other glassware.

Special modules for laboratory equipment

Holder for dandyVice wall mount



In cooperation with dandy innovations, a module for mounting a dandyVice wall bracket was developed. The combination of dandyVice wall mount and holder module from Better Basics Laborbedarf makes it easy to use the dandyVice in the SmartRack®.

Item overview

Item (Frame Size, frame type)	Type	Item no.	PU	Page
SmartRack® classic		01704	1	8
SmartRack® classic mini		01707	1	8
SmartRack® primus		01711	1	9
SmartRack® primus mini		01712	1	9
Item (Pre-configurations)	Type	Item no.	PU	Page
SmartRack® Basic Equipment		01506	1	11
SmartRack® for Chromatography		01511	1	18
SmartRack® for Consumables		01509	1	14
SmartRack® for Life Science		01510	1	16
SmartRack® mini Pipetting Set		01512	1	10
SmartRack® Starter Set Biology		01507	1	12
SmartRack® Starter Set Chemistry		01508	1	13
Item (Single modules)	Type	Item no.	PU	Page
Additional core for adhesive tape dispenser	approx. 25 mm (1 inch) / approx. 51 mm (2 inch)	01198	1	35
Additional core for adhesive tape dispenser	approx. 25 mm (1 inch) / approx. 76 mm (3 inch)	01175	1	35
Back-to-back connectors	for SmartRack®	01614	1	34
Barcode scanner holder	suitable for scanners such as Newland NLS-HR22 and Aplic 304674	01163	1	22
Dispenser for adhesive tapes		01172	1	35
Dispenser for glass pasteur pipettes	150 mm	01169	1	36
Dispenser for glass pasteur pipettes	230 mm	01170	1	36
Dispenser for Parafilm® rolls		01171	1	35
Holder for 2 pipettes with hook		01180	1	29
Holder for 3 pipettes with hook		01145	1	29
Holder for bin liner		01202	1	28
Holder for cannula disposal container		01174	1	26
Holder for chromatography column	Ø 5 - 10 mm	01177	1	23
Holder for chromatography column	Ø 10 - 15 mm	01176	1	23
Holder for chromatography column	Ø 15 - 25 mm	01165	1	23
Holder for chromatography column	Ø 25 - 35 mm	01107	1	23
Holder for chromatography column	Ø 35 - 46 mm	01139	1	23
Holder for chromatography column	Ø 46 - 56 mm	01179	1	23
Holder for cuvettes		01183	1	27

Item (Single modules)	Type	Item no.	PU	Page
Holder for Erlenmeyer flasks	Erlenmeyer flasks, Wide neck 25 ml, 100 ml, Erlenmeyer flasks, Narrow neck 250 ml, 500 ml, 1000 ml	01108	1	23
Holder for Erlenmeyer flasks	Erlenmeyer flasks, Wide neck 250 ml, 500 ml, 1000 ml, Erlenmeyer flasks, Narrow neck 2000 ml, 3000 ml, 5000 ml	01140	1	23
Holder for glassware with ST14		01111	1	24
Holder for glassware with ST14, extended		01113	1	25
Holder for glassware with ST14, plus closure		01112	1	24
Holder for glassware with ST29		01114	1	24
Holder for glassware with ST29, extended		01116	1	25
Holder for glassware with ST29, plus closure		01115	1	24
Holder for glove / tissue boxes		01143	1	25
Holder for kitchen roll		01162	1	26
Holder for laboratory screw top bottles	10 - 25 ml (GL25)	01120	1	27
Holder for laboratory screw top bottles	50 ml (GL32)	01121	1	27
Holder for laboratory screw top bottles	100 - 1000 ml (GL45)	01122	1	27
Holder for microliter syringes		01155	1	28
Holder for open fronted storage bins	a.o. suitable for SCHÄFER LF110, LF210, LF211, LF220	01158	1	32
Holder for pipettes	Eppendorf Multipette® E3 / E3x / stram / Xstream	01189	1	29
Holder for pipettes	for Eppendorf Reference®	01164	1	29
Holder for pipettes	for Eppendorf Reference® 2	01168	1	29
Holder for pipettes	for Gilson® PIPETMAN® Classic / G	01166	1	29
Holder for pipettes	for INTEGRA VIAFLO or INTEGRA VOYAGER	01184	1	29
Holder for pipette tip boxes		01147	1	30
Holder for pipetting aid	for Eppendorf Easypet® 3	01203	1	30
Holder for pipetting aid	for HIRSCHMANN® pipetus®	01188	1	30
Holder for pipetting aid	for INTEGRA-Pipet-boy 2	01154	1	30
Holder for pipetting aid	for INTEGRA-Pipet-boy pro	01156	1	30

Item overview

Item (Single modules)	Type	Item no.	PU	Page
Holder for pipetting aid	for BRAND accu-jet® pro	01178	1	30
Holder for pipetting aid	for BRAND accu-jet® S	01157	1	30
Holder for pipetting aid	for Thermo Scientific Matrix	01186	1	30
Holder for pipetting aid	for TPP Turbo-Fix	01207	1	30
Holder for pipetting aid	for VWR® Powerpette Pro	01199	1	30
Holder for sensor system	for essentim spider	01205	1	31
Holder for separating funnel / shaking funnel	Ø 45 - 85 mm	01152	1	31
Holder for separating funnel / shaking funnel	Ø 85 - 105 mm	01149	1	31
Holder for separating funnel / shaking funnel	Ø > 105 mm	01153	1	31
Holder for tablet		01124	1	33
Holder for wash bottles	for 500 ml (up to ø 79 mm)	01146	1	32
Holder for wash bottles	for 1000 ml (up to ø 99 mm)	01173	1	32
Holder for well plates		01125	1	33
Shelf		01193	1	34
Stainless steel round for insertion into pipette tip boxes		01167	1	30
Stand rod adapter ø 12 mm		01126	1	36
Storage box for 2 storage box inserts		01185	1	20
Storage box for 3 storage box inserts		01142	1	20
Storage box insert – for centrifuge tubes	12 x 15 ml	01128	1	22
Storage box insert – for centrifuge tubes	6 x 15 ml, 4 x 50 ml	01102	1	22
Storage box insert – for centrifuge tubes	6 x 50 ml	01129	1	22
Storage box insert – for microreaction vessels	32 x 0,5 ml	01104	1	21
Storage box insert – for microreaction vessels	20 x 2 ml	01130	1	21
Storage box insert – for sample containers and test tubes	20 x Ø 3 - 10 mm	01161	1	21
Storage box insert – for sample containers and test tubes	15 x Ø 8 - 12 mm	01181	1	21
Storage box insert – for sample containers and test tubes	12 x Ø 10 - 20 mm	01160	1	21
Storage box insert – for sample containers and test tubes	8 x Ø 18 - 22 mm	01182	1	21
Storage box insert – for sample containers and test tubes	6 x Ø 20 - 30 mm	01159	1	21
Storage box insert – for small accessories		01148	1	20
Item (Additional SmartRack® accessories)	Type	Item no.	PU	Page
Drip tray	for SmartRack®	01603	1	37
Drip tray mini	for SmartRack® mini	01604	1	37
Lid for bin liner holder		01192	1	38

Item overview and technical information

Item (Additional SmartRack® accessories)	Type	Item no.	PU	Page
Lid for storage box	for 2 storage box inserts	01924	1	37
Lid for storage box	for 3 storage box inserts	01923	1	37
Protective cover for SmartRack®	with zipper	01609	1	39
Protective cover for SmartRack®	without zipper	01608	1	39
Protective cover for SmartRack® mini	with zipper	01613	1	39
Protective cover for SmartRack® mini	without zipper	01612	1	39
Slot rail mini with handles	for SmartRack® mini	01602	1	38
Slot rail with handles	for SmartRack®	01601	1	38
Item (SmartCase)	Type	Item no.	PU	Page
SmartCase		02101	1	40
Item (SmartStand)	Type	Item no.	PU	Page
SmartStand for well plates		09001	1	41

Net prices plus statutory VAT. | Valid from 01.01.2024

The general terms and conditions of Better Basics Laborbedarf GmbH apply.

Technical information:

- All products are washable with water and mild detergent. In addition all components can be wiped with alcohol-based disinfectants.
- The plastics and metals used are 100% recyclable.
- Our products are autoclavable (maximum temperature 121 °C).
- The plastic elements are resistant to heat deformation under normal laboratory conditions.
- To gently clean the anodised aluminium rail, we recommend using a pH-neutral hand-washing detergent. Ensure that the hand wash detergent is odourless and contains no perfumes, greases or additives. Clean the slot rail by hand and rinse thoroughly with clean water.

Note on joint tolerances for ST14:

- Maximum outside diameter at the narrowest point of the cone joint: 17.2 mm (larger diameters are too wide for the holder and cannot be held)
- Minimum outer diameter at the widest point of the cone joint: 18.0 mm (smaller diameters are too narrow for the holder and would fall out)

Note on joint tolerances for ST29:

- Maximum outside diameter at the narrowest point of the cone joint: 31.4 mm (larger diameters are too wide for the holder and cannot be held)
- Minimum outer diameter at the widest point of the cone joint: 32.8 mm (smaller diameters are too narrow for the holder and would fall out)

IMPORTANT TO NOTE: The SmartRack® and SmartRack® mini as well as the SmartCase and SmartStand are not suitable for the permanent storage of hazardous substances.

We reserve the right to make technical changes, material or model changes, errors and misprints excepted. If you have any further questions, please do not hesitate to contact us at contact@better-basics.de

For more detailed information, please visit our website:

Functionality of SLS 3D printing:	www.sls-3d-printing.better-basics-laborbedarf.de
Resistance to UV light:	www.uv-resistance.better-basics-laborbedarf.de
Resistance to aggressive media:	www.material-resistance.better-basics-laborbedarf.de
Sustainability and design-efficient manufacturing:	www.sustainability.better-basics-laborbedarf.de



2024-02-294-EN-V1



Image: Building of the Better Basics Laborbedarf GmbH in Dresden

YOU ARE INTERESTED IN OUR PRODUCTS OR YOU HAVE FURTHER QUESTIONS?

You can also find more information and news about our product innovations at www.Better-Basics-Laborbedarf.de

Our request to you

A product like our SmartRack® is only as good as its users. With our roots in the Leibniz Institute for Polymer Research Dresden, our company Better Basics Laborbedarf stands for the tradition of “Made in Germany” quality. We feel in multiple aspects committed to this quality label for German companies, which stands for high innovative strength. Even beyond our product catalogue, the same applies for us at Better Basics: Just contact us if you have ideas for extensions or improvements or if you notice something in your daily laboratory routine that we should optimize right away.

We want to create the best possible working environment for you in the laboratory and we are grateful for any comments and inspiration. We can jointly shape the future of laboratory work by cooperating with scientists and researchers. Just like you, we’re always looking for a way to make our world a little better every day.



CHROMATOGRAPHIC SPECIALTIES INC.

1-888-593-5969 • biolynx.ca • tech@biolynx.ca