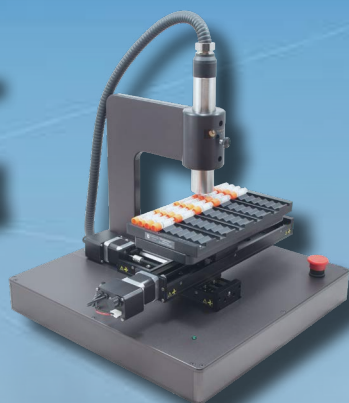


April 2024

# Instrumentation



MJS  
BioLynx 



CHROMATOGRAPHIC  
SPECIALTIES INC.

1-888-593-5969 • [biolynx.ca](http://biolynx.ca) • [tech@biolynx.ca](mailto:tech@biolynx.ca)

## Index

BIO HPLC Purification System – Knauer Azura® FPLC .....	3
Real Time Mass Detection in Your Bioprocess – Microsaic MiD® Protein ID .....	4
Lipid Nanoparticles – IJM NanoScaler & IJM DuoCore NanoProducer .....	5
Endotoxin Testing – ACC Pyros Kinetic Flex .....	6
BioTek Epoch 2 – Associates of Cape Cod, Inc. ....	7
Automatic Tube Labeler – Tubewriter™ 360 .....	8
Surface Plasmon Resonance (SPR) – Biosensing Instrument .....	9
Bench Top Equipment – Crystal Technology & Industries .....	10
Mixer HC – USA Scientific .....	11
Ambient Air Thawing Platforms – BOX Scientific .....	12
Laboratory Water Purification System – Aqua Solutions .....	13
Rack Reader DR900 - Micronic .....	14
1D / 2D Code Readers and Electric Cappers – Micronic .....	15
Sample Storage Tubes – Micronic .....	16
T210 2D Cryovial® – Simport Scientific Inc. ....	17
ELISA Plates, Deep Well Plates and PCR 96 Well Plates – NEST Biotechnology .....	18
Adhesive-Free Sealing Films and Mats, Automated Sealer System – MicronPlus .....	19

## Looking to Add a Sidekick to Your Lab?

**We've got Bench Top Buddies!**

**Mini, but Mighty! 🐾🐾**



Scan for details



©byrdyak

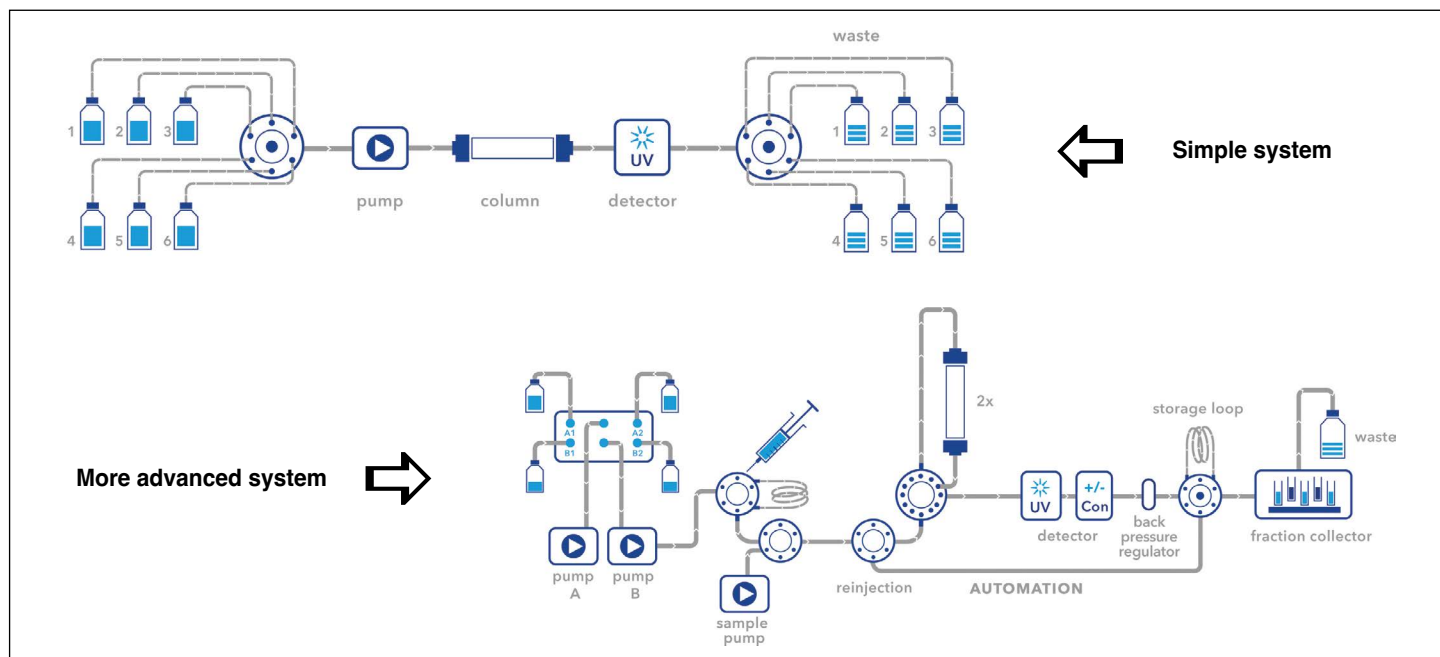


# BIO HPLC PURIFICATION SYSTEM

## Knauer Azura® FPLC Systems

### The flexible protein purification platform.

You choose the method (size exclusion, affinity, ion exchange or hydrophobic interaction) and the purification strategy (capture, intermediate or polishing), this system does the rest.



- Buffer delivery: Pre- or post-pump gradient, from 0.1 to 1000 mL/min.
- Buffer selection: Upgradeable up to 24 buffers
- Sample injection options: Manual injection valve, sample pump to process up to 6 samples, autosampler
- Column selection: Choose either a 2-position valve for switching between 2 columns or a multifunction valve for up to 5 columns and reverse flow
- Detectors: Options include UV-Vis single wavelength, UV-Vis multi wavelength, UV-Vis photodiode array, fluorescence, refractive index, electrochemical, conductivity, radioactive, optical rotation, pH and mass spectrometer
- Fraction collection: Choose a fraction valve if you have large volumes to collect, or a fraction collector for many samples
- Pressure control: The system features automatic determination of pressure differentials with an action manager allowing the run to be stopped or the flow to be decreased as required
- Air sensor: Up to 4 air sensors can be installed per system
- User-friendly software allows the integrity of the system to be monitored; a run can be stopped in case of leakage
- Warranty: Industry-best 2-year parts and labour warranty with 24 hr express service available for critical operations (please inquire)
- Knauer's instruments are manufactured in Germany and renowned for top-end specifications. Each module, including the pump, detector and autosampler, has the same or better specifications than the North American market leaders



Scan QR Code to read more on the Knauer Azura® FPLC Systems

Contact our Instrumentation Team to discuss the system that best suits your needs.

# REAL TIME MASS DETECTION IN YOUR BIOPROCESS

Save time in manufacturing and the time to market for new biologics.

The MiD<sup>®</sup> ProteinID is the next generation of mass detector, providing real-time information about the small molecules and proteins in your bioprocessing workflows at the point-of-need. The detector is designed for multiple upstream and downstream scenarios. Using the MiD<sup>®</sup> ProteinID you can verify the health of your target protein on the fly, while simultaneously monitoring metabolite and feedstock information. This means the detector is an all in one Critical Quality Attribute and Critical Process Parameter measurement tool.



The MiD<sup>®</sup> ProteinID combines the mass spec, vacuum system, electronics, and computer inside one compact unit:

- Small footprint enables deployment anywhere within laboratory or processing facilities
- Suited for the analysis of biologics and metabolites
- Accurately ID target molecules, feedstocks and metabolites on the fly
- Simultaneously monitor and control your CQAs and CPPs
- Speed up time for process interventions, such as dosing and feeding strategies
- Low maintenance costs with completely tool-less front-end
- Single quadrupole with a mass range of 50 - 3200 m/z
- Integrated intuitive open-access Masscape<sup>®</sup> software designed for rapid set up and data analysis

The MiD<sup>®</sup> ProteinID can verify your target protein through the whole bioprocess from cell train to bioreactor to drug capture to drug formulation. Solving your mass identification needs in your bioprocess both upstream and downstream.

Fast, accurate, real-time mass data of the critical process parameters and critical quality attributes allows you to make decisions faster.



Scan QR Code to read more  
on the MiD<sup>®</sup> ProteinID



Scan QR Code  
for the Application Note

From R&D to Production...

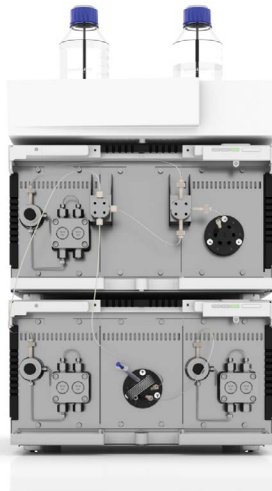
## think LNP | think KNAUER



Lipid nanoparticles (LNPs) have shown to be the preferred delivery media for mRNA-based vaccines against the Corona virus. LNPs encapsulate and protect the delicate active ingredient and allow its transport to the target cells in the human body. Corona vaccines are the first large-scale use of mRNA and lipid nanoparticles in vaccination history.

KNAUER is world-renowned as a manufacturer of high-quality liquid chromatography systems. They have leveraged their expertise in high-pressure dosing, mixing and system engineering into the manufacture of production equipment for lipid nanoparticles.

KNAUER's Impingement Jets Mixing (IJM) technology has demonstrated precise and consistent performance for small and large-scale production of lipid nanoparticles. The encapsulation process of active pharmaceutical agents with lipids is based on impingement jets mixing technology, where two streams collide at high velocity in a jet mixing chamber. One of the streams contains the lipids in organic solvents and the other stream the active pharmaceutical ingredient (API) in water. The mixing at high velocity reduces the solubility of the lipids so that homogenous nanoparticles are formed.



### IJM NanoScaler

The IJM NanoScaler contains 5 different impingement jet mixers, allowing researchers to determine the optimum encapsulation conditions before scaling up the process to run on a larger NanoProducer unit.

Each NanoScaler system contains three pumps. API solution is transferred via a loop to be mixed with the organic phase. Finally, the LNP mixture is quenched in a third mixer.



Scan QR Code to read more on the Knauer NanoScaler and NanoProducer Systems

### IJM DuoCore NanoProducer

Production systems are designed and optimized to meet customer's specifications and documentation requirements.

They are equipped with built-in software and all necessary interfaces for integration into the customer's own programmable logic controller (PLC) systems.

System installations in Class C clean rooms have been successfully carried out.

Production units are built on a stainless-steel frame with casters and are suitable for CIP cleaning procedures in pharmaceutical environments.



***Pyros Kinetic Flex***

**Fully compliant USP bacterial endotoxin testing system.**



- An optical reader that runs both chromogenic and turbidimetric endotoxin assays
- Available in 3 configurations: 32, 64 or 96 positions
- Best sensitivity range in the industry with detection limits as low as 0.001 EU / mL
- Increased efficiency: easy-to-use software that provides quantitative results while the assay continues to run
- Flexible testing: variable volume and ratios can be used
- Reduced lysate usage: volumes as low as 50  $\mu$ L per analysis
- Independently timed wells: allows for more samples to be added for a continuous run
- 21 CFR part 11 compliant software with Oracle-based best-in-the-industry data security
- Precise temperature-controlled incubator: 37°C  $\pm$  0.5°C
- Solid state design with LED light source for low maintenance
- Two wavelength settings: 405 nm and 660 nm
- Complete validation protocol is available



Scan QR Code  
for more information



Associates of Cape Cod Inc. products are available from <sup>MJS</sup> BioLynx, a Canadian distributor of high quality products for protein chemistry, molecular biology, immunology, microbiology, and other life science disciplines.

The BioTek Epoch 2 microplate spectrophotometer delivers excellent performance for UV-Vis absorbance measurements. Measurements can be performed in 6- to 384-well microplates, cuvettes, and in microvolume samples with the available Take3 microvolume plate. The broad wavelength range enables applications from nucleic acid and protein quantification in the low UV to microbial growth assays higher wavelengths.

Integration with **ACC's Pyros® eXpress software** allows for an array of endotoxin specific reagents including **ACC's PyroSmart NextGen® recombinant cascade reagent (rCR)** to be easily used.



Scan QR Code  
to view product

- Filter-free UV-Vis wavelength selection from 200 to 999 nm in 1 nm increments.
- Compatible with 6- to 384-well plates and cuvettes for assay versatility, the optional cuvette port enables quick and easy 1 cm sample measurements. The system offers versatile choices for assay workflows in a variety of labware.
- 4-Zone incubation to 65°C and Condensation Control can meet the assay requirements of important biofuels research, food and beverage safety, and kinetic assays.

## Specifications

Automation Compatibility	BioSpa 3rd-party	BioStack	BenchCal
Environment Control	Incubation to 65°C	Condensation Control	
Instrument Control	Local Touch-screen	Computer Software	
Monochromator Wavelength Range	200-999 nm (ABS)		
Shaking	Linear	Orbital	Double-orbital
Supported Labware	6- to 384-well plates	Take3/Take3 Trio	Cuvette

*For Research Use Only. Not for use in diagnostic procedures.*

# AUTOMATIC TUBE LABELER

TubeWriter™ 360 is a high-speed inkjet unit that prints directly on vials, tubes and other labware to eliminate the cumbersome and time-consuming application of adhesive labels or messy handwriting.



TUBEWRITER

3 6 0

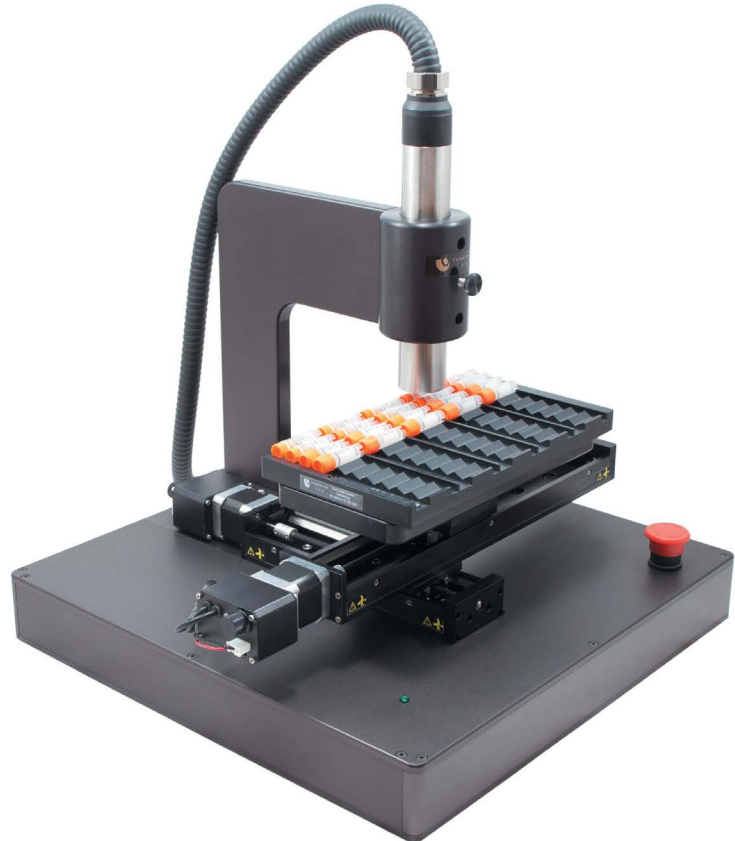
## Tradition of Innovation

TubeWriter 360™ expands on the TubeWriter product line by employing a high-speed ink-delivery system used in over a quarter of a million systems world-wide. The inkjet technology has been designed to withstand harsh industrial conditions.

Continuous inkjet technology brings higher speed and higher resolution to the analytical laboratory. Barcodes, graphics and smaller more legible fonts are all now possible on your tubes and glassware.

## The Fastest Direct Printer for Labware

- Proven assembly-line technology for the lab bench
- High-speed – Up to 2,500 tubes / hour
- Any labware – Autosampler vials, microcentrifuge tubes, screw cap tubes, conical tubes, snap cap tubes, cluster tubes, cryogenic vials, histology cassettes, slides and microplates.
- Scannable barcode printing on demand (e.g., 2D Data Matrix, Code 128, etc.)
- Excel Interface or LIMS Integration
- Graphics include logos, warning symbols, manufacturing marks and more
- Size and Weight:
  - Printing Unit: 18" x 18" x 16", 50lbs
  - Inkjet Cabinet: 13.6" x 11.2" x 21.3", 49lbs



## Print on Any Labware!



Watch the TubeWriter™ 360 in action

## Who Can Benefit from TubeWriter™ 360?

- QA / QC labs where every sample must be tracked and positively identified
- High-volume clinical reference and testing labs
- Reagent manufacturers. Protects identification in dry ice and eliminates use of adhesive labels.
- Pharmaceutical companies looking to reduce time-to-market on drug discovery
- Cell banks storing cryovials exposed to liquid nitrogen and -80°C
- Tube manufacturers needing flexible printing solutions for custom runs



# SURFACE PLASMON RESONANCE (SPR)

Versatile SPR instruments for a wide range of applications, including:

- Environment and Food: Trace metal analysis, hazardous residue screening, sensor development
- Life Sciences: Protein, DNA, drug interactions, gene assays, drug development
- Electrochemical Measurements: Anodic stripping analysis, electropolymerization, redox-and charge-related processes
- Chemical Vapor Sensing: Fundamental solid-gas interface studies, detection of toxic molecules



## BI-4500 Series

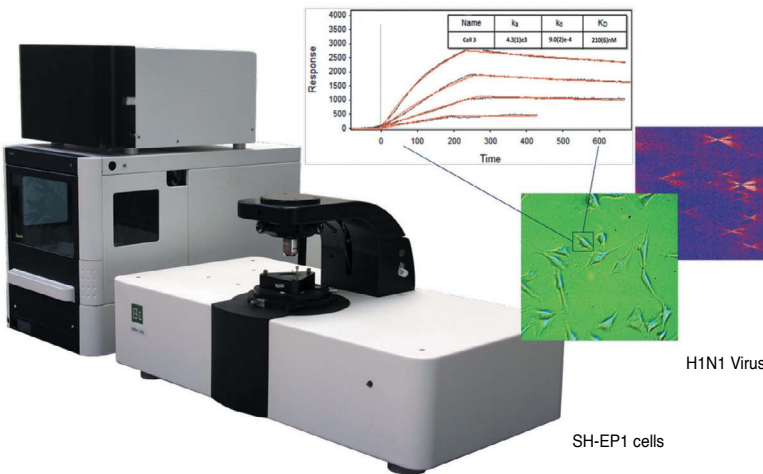
- High throughput with 5 channels and a fully automated 384-well plate autosampler
- High sensitivity for detection of small molecules (< 100 Daltons)
- BI-DirectFlow™ Technology delivers samples to the sensor surface with near-zero dispersion
- Temperature control for thermodynamic studies, 6°C to 50°C
- Innovative multi-module design provides users with maximum flexibility
- Switch between various analysis modules for electrochemistry and liquid applications



## SPRM 200 Series SPR Microscopy System

Integrated optical microscopy with SPR measurements in one instrument.

- Large field of view with high resolution optics to view single or multiple cells
- In vitro, label-free molecular binding activity measurements
- Provides SPR sensorgrams and binding activity map of individual cells as well as the binding kinetic constants ( $k_a$ ,  $k_d$ , KD)
- Nanoscale monitoring of bacteria or virus metabolic or binding activity for studying nanoparticle drug delivery



Scan QR code for more information



Scan the QR Code  
to view the Catalogue

# Bench Top Equipment





- Controls temperature, speed, and mixing intervals
- Heats to 99°C or cools 13°C below room temperature
- Digital display provides precise control
- Short mix button for quick, instant mixing
- Program two consecutive, different runs when samples require special care

Stop trusting your valuable samples to water baths. The Mixer HC offers precise heating, cooling, and thawing without the risk of water-borne contaminants. Increase your reproducibility for better yields and more consistent results. Mixing speed is block dependent: 300-1400rpm for 1.5 mL tubes, 2.0 mL tubes, cryogenic tubes, and plates weighing 200 grams or less; 300-1500 for 0.5 mL tubes; and 300-750 for 5 mL, 15 mL, and 50 mL tubes. Blocks for microcentrifuge tubes include a polycarbonate rack for quick transfer of all 24 tubes at once.

Two special functions provide additional options for specific applications:

- Interval mixing: Continuously alternates between mixing and stationary periods where the mixing frequency and the duration of the mixing and pause functions can be freely selected.
- Program mode: In addition to a normal mixing/temperature control run, two combined, consecutive mixing/temperature control runs can be programmed. When the first run is completed, the second run will switch on automatically, allowing two different conditions to be applied to the same liquid.



Blocks are available for a variety of tubes and multiwell plates.



Scan QR code to watch a demonstration.

## Specifications

Mixing Speed	300-1500 rpm (block dependent)
Orbit Diameter	3 mm
Heating Rate	Approx. 5°C/min.
Cooling Rate (above room temp)	2 to 3°C/min.
Cooling Rate (below room temp)	0.5 to 1.0°C/min.
Ambient Temperature	4 to 35°C
Relative Humidity	70% max.
Dimensions (W x D x H)	220 x 250 x 125 mm
Weight Base Unit	7 lb (3.2 kg)
Mains Connection	100 to 240V, 50 to 60 Hz
Power Consumption	90W

## Applications

cDNA synthesis

Enzyme reactions (restriction digest, ligation, proteinase-K-digestion)

Denaturation of DNA, RNA, or proteins

Labeling of DNA, RNA, or proteins

Cultivation of bacteria in microcentrifuge tubes, centrifuge tubes and deep well plates

Transformation of bacteria and plasmids

Resuspension of pellets



## Control Your Sample Thawing - Quickly, Safely and Consistently

BOX Scientific's ambient air convection based thawing platforms have become the new standard for procedural sample thawing.

From benchtop units to high capacity platforms, you can safely **reduce your thawing time by up to 75%** without making any compromise.

## Station One The first of its kind!

Thaw Right!

The Station One thaws frozen reagents and samples in a fraction of the time using only ambient air. Its fixed platform enables high throughput sample thawing that is repeatable, proceduralizable, and safe for even the most delicate samples and reagents.

The Station One channels ambient air over and around samples. The result is up to a 75% decrease in sample and reagent thawing times without any application of heat. Included accessory racks enable thawing of most industry standard tubes from 1 to 50mL.

The Station One's large thawing surface can accommodate two microplates or 2D barcoded tube racks at a time. There's ample surface area for thawing media bottles too.

The Station One unit has a compact footprint and consumes minimal power.

### What is the cost of your time?

BOX Scientific's thaw stations can save you time and money while assuring you consistent inputs into your manual and automated laboratory processes. Microplates, tubes and even 2D barcoded tube racks can be ready for use in a fraction of the time. Their surface capacity and interchangeable racks provide you maximum speed and flexibility. There is no single product on the market that can offer all of this.

Achieve Equilibrium with the BOX Station One, Heliport and Heliport Plus!



## Heliport



- High uniformity, high reproducibility
- No calibration or maintenance required
- Rapidly thaws samples to equilibrium with the working environment
- Seven Jumbo Fans deliver a continuous 315 CFM ambient air current
- Accommodates up to 11 SBS footprint positions, custom configured in portrait or landscape orientation
- Suitable for benchtop use or plug-and-play integration with most automated systems

## Heliport Plus



The Heliport Plus has the same deck size as the Heliport but with the added feature of a 600 watt heating system that can be turned on to thaw large molecule compounds and high melt carriers such as DMSO. In addition, it's combined with 7 upgraded fans that deliver 6L/min. of 30°C air at 2 meters per second. The heater can be turned off when not needed for other compounds and will perform the same as the basic Heliport.



Scan QR code  
to view products

## Laboratory Water Purification Systems

**Water systems that conveniently, economically, and reliably deliver high purity reagent grade water for your laboratory.**

AQUA SOLUTIONS offers modular systems that allow you to select the appropriate configuration for your laboratory's particular needs; the system is easily upgradeable should your needs change in the future. Depending on your lab / facility requirements, you may opt for a single large system to cover all lab needs, or smaller systems tailored to the exact requirements of each particular lab.

These systems are easy to install, operate and maintain, without complex service requirements, like weekly chemical sanitization, that can complicate maintenance, while costing you money and down-time.

- Type I, Type II & Type III Reagent Grade DI systems
- Reverse Osmosis pre-treatment systems
- Combination Reverse Osmosis plus Type I, Type II or Type III DI systems in a single cabinet
- Water deionization, UV sterilization / oxidation, TOC reduction, removal of pyrogens and endotoxins by filtration, and hydrogen generator pre-treatment
- Systems can deliver from 0.35 to 40 L/min.
- Replacement cartridges and accessories are available for other brands of systems
- Recirculating PTFE remote dispensers with 7 feet of tubing and a 0.2 micron final filter capsule is included with all Type I systems (longer dispenser lengths are available)
- Wide range of optional storage tanks



AQUA SOLUTIONS offers:

- 2-year warranty on all systems
- Complete installation packages for single or distributed outlets, customized to your needs



**Contact us for a free consultation  
on your laboratory water needs.**



Scan QR code  
to view products

The high speed Micronic Rack Reader DR900 reads whole racks filled with 2D Data-Matrix coded tubes. The DR900 is a camera-based reader which reads and decodes the tubes in just 3 seconds. With the optional added 1D Side Barcode Reader, the 1D Rack Barcode can be read simultaneously in just 1 second.

The Rack Reader DR900 works with the easy-to-install Micronic Code Reader Software which gives reliable code readings and can be smoothly integrated into any laboratory sample database.

### QUICK

Reads and decodes racked tubes in 3 seconds

### COMPATIBILITY

Compatible with a variety of 2D Data-Matrix coded tube brands

### CODINGS

Reads and decodes 2D Data-Matrix coded tubes in 138-, 96-, 48-, and 24-well format

### COMPACT

Small benchtop solution

### USER-FRIENDLY

Easy-to-use Micronic Code Reader Software

### WARRANTY

Micronic Rack Readers come standard with a 5-year warranty



Contact us or  
Scan QR code  
to view.

## 1D and 2D CODE READERS

**A complete range of code readers to enable fast, accurate and efficient sample identification.**

### Single Tube Readers

- Reads 1D barcodes of the tube and rack and 2D Matrix Codes in less than 1 second
- Compatible with 96-, 48- and 24-well rack and tube formats
- Plug and Play, no software installation required

### Handheld Tube Readers

- Instantly reads 1D-Linear and 2D Data-Matrix Codes
- Compatible with all mobile devices with Bluetooth
- 10 hour battery life with continuous usage

### Whole Rack Readers

#### Micronic Rack Reader DR710

- Includes anti-frost system
- Reads racked tubes in 7 seconds
- Easy-to-use software

#### Micronic Rack Reader DR900

- Reads racked tubes in 3 seconds
- Optional 1D Side Barcode reader can be read simultaneously in just 1 second
- Easy-to-use software

Micronic readers come with a 5-year warranty and are compatible with most brands of 2D coded tubes and racks.

## Micronic – Electric Cappars

**Improve productivity and minimize repetitive motion issues.**

### Push Cap Cappars

- Compatible with TPE Capmats, Capbands, Capclusters and EVA Capmats
- Seal an entire rack of 96 tubes within 12 seconds
- Controlled pressure system for even capping

### Screw Cap Recappers

- Each Screw Cap is tightened securely and uniformly
- CS500 Recapper caps a row of 8 tubes in 5 seconds and a whole rack of 96 tubes in only 1 minute
- SR096, SR048 and SR024 systems cap an entire rack in 30 seconds

Micronic electric cappers come with a 3-year warranty. They do not require adapters and can be integrated into automated systems and robotics.



Scan for Video



Tube Reader DT510



Handheld Wireless Code Reader DT300



Scan for Video



Rack Reader DR710



Scan for Video



Rack Reader DR900



Scan for Video



Push Cap Capper CP600



Scan for Video



Screw Cap Recapper CS500

Micronic offers a complete line of sample storage tubes that fit in the 96-well, 48-well or 24-well ANSI/SLAS standard rack format. The comprehensive range includes tubes with volumes ranging from 0.30mL to 6.00mL. The tubes are available non-coded, alphanumeric coded or with a unique 2D Data-Matrix code.

<p><b>0.30mL TUBES EXTERNAL THREAD</b> Working volume with Screw Cap (+21°C): 0.32mL (V-bottom) and 0.23mL (Vr-bottom).</p>	<p><b>1.10mL TUBES EXTERNAL THREAD</b> Excellent closure and horizontal placement of the cap to ensure long-term sample preservation and storage. Working volume (+21°C): 0.93mL with Screw Cap.</p>	<p><b>2.00mL TUBES EXTERNAL THREAD HYBRID</b> Guarantee sample traceability and provide a high working volume (1.95mL at +21°C with a Screw Cap) with a relatively low tube height.</p>
<p><b>0.40mL TUBES EXTERNAL THREAD</b> Efficient storage of low volumes of liquid samples. This tube has a massive working volume of 0.40mL (+21°C) with Screw Cap.</p>	<p><b>1.40mL TUBES ROUND BOTTOM</b> Proven to be an industry standard solution for many sample storage applications. Working volume (+21°C): 1.14mL with Push Cap.</p>	<p><b>3.00mL TUBES EXTERNAL THREAD HYBRID (48-WELL FORMAT)</b> ANSI/SLAS format racks, standard cryo boxes, automated stores and liquid handlers. Working volume (+21°C): 2.90mL with Screw Cap.</p>
<p><b>0.50mL TUBES INTERNAL THREAD</b> Save between 35% - 50% of your freezer space. Working volume (+21°C): 0.21mL with Screw Cap.</p>	<p><b>1.40mL TUBES INTERNAL THREAD</b> Provided with a code surface that cannot be separated from the tube. Working volume with Screw Cap (+21°C): 1.04mL (V-bottom) or 1.10mL (U-bottom).</p>	<p><b>3.50mL TISSUE TUBES EXTERNAL THREAD</b> The tubes can also be used for secure transportation. Working volume (+21°C): 3.35mL with Screw Cap.</p>
<p><b>0.75mL TUBES INTERNAL THREAD</b> The 0.75mL tubes enable you to store your valuable samples in a safe and traceable way. Available in a push cap and screw cap version.</p>	<p><b>1.40mL TUBES EXTERNAL THREAD</b> Cryogenic temperatures, the 1.40mL tubes with external thread have thick tube walls. Working volume (+21°C): 1.11mL with Screw Cap.</p>	<p><b>3.00mL TUBES EXTERNAL THREAD HYBRID (24-WELL FORMAT)</b> Tube walls enable visual checking, while the 4 different coding concepts guarantee sample traceability. Working volume (+21°C): 2.45mL with Screw Cap.</p>
<p><b>0.75mL TUBES EXTERNAL THREAD</b> The 0.75mL tubes with external thread are provided with a triple start thread. Working volume (+21°C): 0.60mL with Screw Cap.</p>	<p><b>1.40mL TUBES EXTERNAL THREAD HYBRID</b> The transparent tube walls enable easy visual checking, while the 4 coding concepts guarantee sample traceability. Working volume (+21°C): 1.20mL with Screw Cap.</p>	<p><b>4.00mL TUBES INTERNAL THREAD</b> Ideal for storing or transporting larger volumes of liquid or solid biological samples. Working volume (+21°C): 2.70mL with Screw Cap.</p>
<p><b>0.75mL TUBES EXTERNAL THREAD HYBRID</b> Automated and visual sample identification and guarantees the complete traceability of samples. Working volume (+21°C): 0.62mL with Screw Cap.</p>	<p><b>1.50mL TUBES EXTERNAL THREAD HYBRID</b> The tubes are ideal for storing fresh frozen tissue samples. Working volume (+21°C): 1.45mL with Screw Cap.</p>	<p><b>4.00mL TUBES EXTERNAL THREAD</b> Ideal for solid or large volumes of liquid samples. Working volume (+21°C): 3.40mL with Screw Cap.</p>
<p><b>0.80mL TUBES EXTERNAL THREAD</b> The 0.80mL tube offers you the best volume to height ratio in a 96-well format with a working volume(+21°C) of 0.75mL with a Screw Cap.</p>	<p><b>2.00mL TUBES INTERNAL THREAD</b> High sample storage capacity and absolute sample traceability in an industry standard 96-well configuration. Working volume (+21°C): 1.49mL with Screw Cap.</p>	<p><b>6.00mL TUBES INTERNAL THREAD</b> Large working volume of 4.80mL (+21°C) with Screw Cap. These tubes are available non-coded or with an unique 2D Data Matrix code.</p>
<p><b>1.00mL TISSUE TUBES EXTERNAL THREAD</b> Specially designed for the storage of your valuable fresh frozen tissue. Working volume (+21°C): 0.85mL with Screw Cap.</p>	<p><b>2.00mL TUBES EXTERNAL THREAD</b> High volume samples in a space-efficient 96-well format. Working volume (+21°C): 1.55mL with Screw Cap.</p>	<p><b>6.00mL TUBES EXTERNAL THREAD HYBRID</b> Guarantee absolute sample traceability with 4 coding concepts and optimize working volume (6.00mL at +21°C with Screw Cap).</p>
<p><b>1.10mL TUBES INTERNAL THREAD</b> Micronic work equally well with either screw caps or push caps. Working volume (+21°C): 0.80mL with Screw Cap.</p>	<p><b>2.50mL TUBES ROUND BOTTOM</b> Highest net working volume on 96-format: 2.50mL per individual tube (working volume at +21°C).</p>	<p><b>TUBESTRIP-8 &amp; TUBES FOR LIGHT SENSITIVE SAMPLES</b> Storing up to 8 samples in a linked row and has a working volume (+21°C) of 1.20mL. The amber storage tube uniquely safeguards light sensitive sample.</p>

### Micronic Tube Wizard (Tube Configurator)

MICRONIC TUBE CONFIGURATOR

FIND YOUR IDEAL SAMPLE STORAGE TUBE

CHOOSE A VOLUME

1 TUBE VOLUME
2 RACK FORMAT
3 THREAD TYPE
4 TUBE CODING
5 TUBE SIDE CODING
6 TUBE BOTTOM

Less than 0.75ml

Between 0.75mL and 2.00mL

Bigger than 2.00ml

SAVE AND CONTINUE →





# T210 2D Cryovial<sup>®</sup>

## 2D Datamatrix Barcoded Cryogenic Vials

2 ml externally threaded



### Features and Benefits:

- Sterilized to 10<sup>6</sup> by gamma radiation
- Unique laser etched 2D datamatrix barcode
- Human readable characters
- Every barcode is pre-scanned: guaranteed unique codes and no global duplicity
- High contrast: white on black background allows excellent readability even in harsh conditions
- Standard size 81-place cryostorage boxes: Utilize current freezer racking systems



Scan QR code  
to view products.

[www.simport.com](http://www.simport.com)

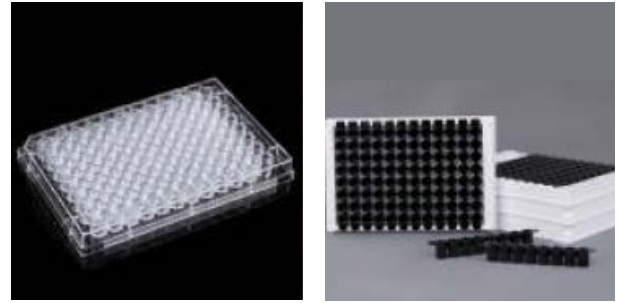
# PLATES



## ELISA Plates

### Features

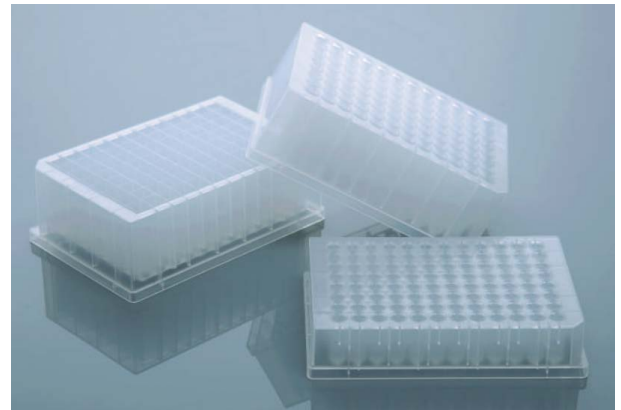
- Made of polystyrene and are designed specifically for ELISAs.
- They present good adsorption performance and low baseline value.
- Uniform thickness and size.
- High batch-to-batch stability and low coefficient of variation (CV) value.
- Both detachable and non-detachable flat-bottom plates are offered for customers to choose from based on their applications.
- The letters and numbers on the frame of the plates are convenient for detection and identification in experiments.
- High transparency of clear plate bottom.
- White plates are best suited for luminescence measurements as they reflect the signal instead of absorbing it and hence enhance the luminescence signals.
- Raw materials show good light-proof properties, which greatly reduce well-to-well signal interference.



## Deep Well Plates

### Features

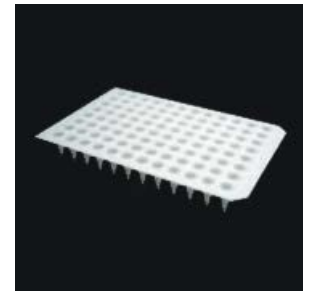
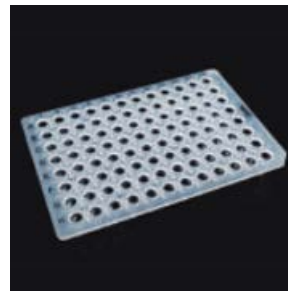
- High quality imported PP material employed for high stability and no chemical reactions with test reagents.
- Compatible with DMSO and inert to water.
- Can be stored under subzero temperature from -40 to -80°C.
- Maximum sustainable centrifuge force 4000g.
- Autoclavable at 20psi, 121°C for 20 minutes, great heating uniformity.
- Minimum residual liquid, low heavy metal content.
- Certified DNase/RNase and Pyrogen Free.
- Conformed to international SBS standards.
- 48 & 96 Round Well and 24, 48 & 96 Square Well, U and V bottom are available
- Alphabetical sorting and corner cut marking for convenient tracking of samples.
- Each package has a separate article number/batch number identification, facilitating the quality tracking.



## PCR 96 Well Plates

### Features

- Made of high-quality polypropylene to ensure minimal loss of reaction solution.
- Flat surface, thick and solid, not easy to deform.
- The black ink-printing marks on the surface are easy to read and identify.
- Elevated edge of the hole can better prevent cross contamination.
- Compatible with NEST pressure sensitive film, self-adhesive film and hot sealing film.
- Autoclavable.
- The tube wall of transparent 96-well PCR Plate is thin, allowing for good light transmission.
- White PCR 96-well plate is better for qPCR experiments.
- The maximum capacity of the 0.1mL tube is 150  $\mu$ L, and that of a 0.2 mL tube is 250  $\mu$ L.
- Certified DNase/RNase and Pyrogen Free.



Scan the QR Code to view the full NEST Catalogue





**MicronPlus sealing films and mats provide adhesive-free areas that are not in contact with the well contents when sealing a plate.**

**They also do not require the use of a heat sealer.**

**MicronPlus** is the patent holder and manufacturer of innovative life science products. MicronPlus introduces alternative sealing products for microplates that overcome many drawbacks of commercially available sealing films and mats. This process is achieved by the application of pattern adhesive technology, which provides adhesive-free areas that are not in contact with the well contents when sealing films and mats adhere to a plate.

MicronPlus Pattern Adhesive Technology enables researchers to have an option of choosing their optimum barrier film, adhesive, and design that fits their specific microplate sealing needs. MicronPlus products have the features that make them ideal covers for microplates and vials.

**Optical Clarity, Pierceability, Chemical Resistance, and RNase-DNase Free.**

**Product Categories:**

- PTFE sealing films 96-well round, square, pre-slit, 384-well square and pre-slit
- Silicone sealing mats, 96-well round, square, 384-well square and individual patches available
- Automation solutions
- Custom designs available



Scan the QR Code to view the Adhesive-Free Sealing Films and Roll Format Films

**MicronPlus Automated Sealer System with Roll Format Films**

MicronPlus Sealer provides a highly accurate and reliable placement of any format of Pattern Adhesive Sealing Films and Silicone Seal Mats. This automated system provides maximum accuracy with measured results as +/- 0.034mm. The system is configured specifically for integration into automated assembly solutions or as a stand-alone unit.

**Key Features:**

- No heat required
- Seals up to 15 plates per minute
- Precise alignment of pattern adhesive seal on the plate
- Compatible with a wide range of plate types
- Available as a stand-alone unit or integrated into an automation system
- Dimensions: 35" x 45" x 38"
- Weight: 70lbs



Please contact us for pricing on the Automated Sealer System.

*MJS BioLynx is proud to represent the following companies in Canada ...*

**Cell & Molecular Biology**

- Crystallography
- Immunohistochemistry
- Immunofluorescence
- Glycobiology
- Transfection & Electroporation
- 3D Cell Co-culture
- 3D Laboratory Services
- Density Gradient Media
- Cell Culture Media
- Cell Migration Assays
- DNA / RNA Exosome Purification
- PCR, qPCR & PCR Clean Up Reagents



**Antibodies and Proteins**

- Enzymes & Antibodies
- Nucleosomes & Histones (Epigenetics)
- Lipids and Fatty Acids
- Recombinant Proteins
- ELISAs
- Protein Expression Reagents
- Cytokines



**Labware & Equipment**

- Pipette Tips
- Semi Automated Pipettors
- Freezer Racks
- Tubes
- Histology Labware
- Sample Collection and Management
- Sample Storage
- Microwell Plates
- Water Purification Systems
- Benchtop Equipment
- SPR
- Tube Labeling and Thawing
- qPCR



**Microbiology**

- Endotoxin Testing
- Yeast Growth Media
- Microscope Slides, Stains and Accessories
- Sterilization Products



**+ More**

- Detergents
- Protein Purification & Assay Reagents
- Chromatography



Please visit our website at [www.biolynx.ca](http://www.biolynx.ca) if you would like to be added to our mailing list.  
 1-888-593-5969 • [biolynx.ca](http://biolynx.ca) • [tech@biolynx.ca](mailto:tech@biolynx.ca)