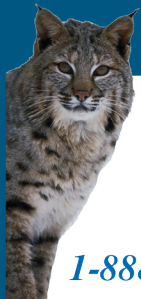


CRYSTAL

Crystal Technology & Industries, Inc.

www.crystalindustries.com



Available in Canada from...

MJS
BioLynx
INC.

1-888-593-5969 • www.biolynx.ca • tech@biolynx.ca

2020



Bench Top Equipment



2020

Crystal Technology & Industries



Brief Introduction

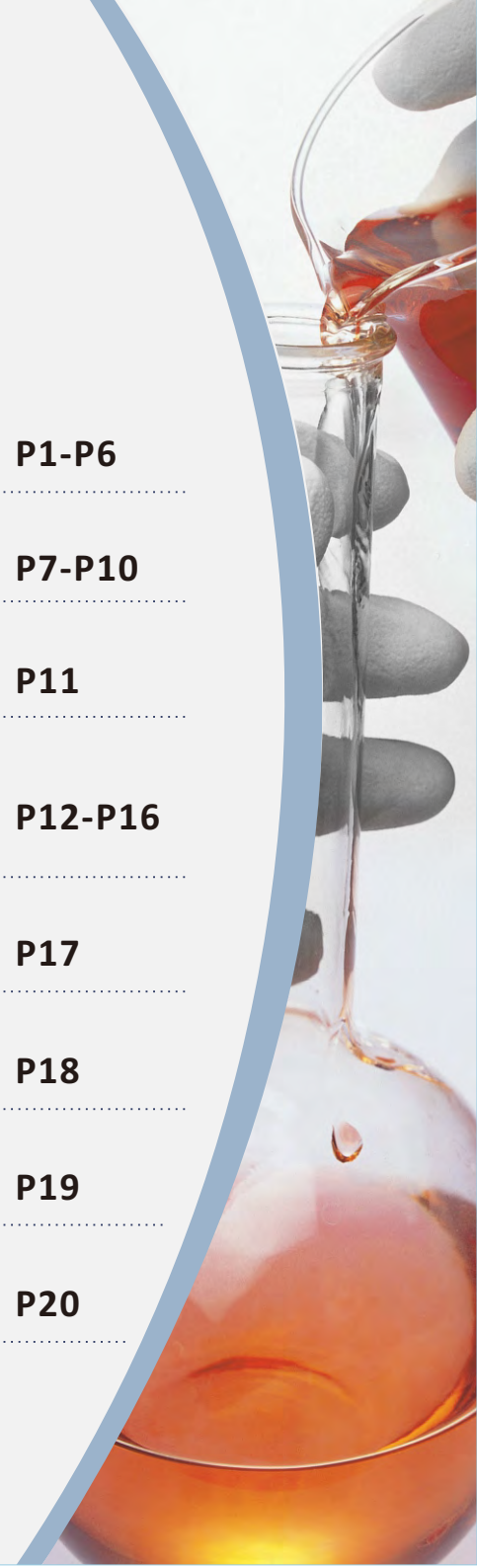
For over 25 years Crystal Technology & Industries has been driven to deliver more value to the scientific marketplace. Our team of over 40 engineers collaborate closely with top tier research institutions to design & develop products with application specific features at a cost that allows for more research to be accomplished.

This 2020 catalog of bench top equipment products has now expanded to over 60+ items with even more in the final testing phase for 2020. All of our products undergo extensive testing to ensure superior quality with failure rates less than 1%. That is why every Crystal Technology product comes with an industry leading 2 year REPLACEMENT WARRANTY.

Our presence is global with dedicated offices/warehouses in North America, Europe & Asia. Yet our goal is total customer satisfaction felt locally. We look forward to serving the scientific community even better in 2020 and beyond.

Index

Mixers	P1-P6
Shakers	P7-P10
Mini Centrifuge	P11
Magnetic Stirrer & Hot Plate Stirrer	P12-P16
Mini Water Bath	P17
Dry Bath	P18
UV Lamp	P19
Microincinerators	P20



▶ Tube Revolvers



TR-01A

Model: TR-01A
 Speed Range: 25rpm
 Ambient Temp.: 4~60°C
 Dimension: 225x148x195mm
 Power: 4W



TR-02UA

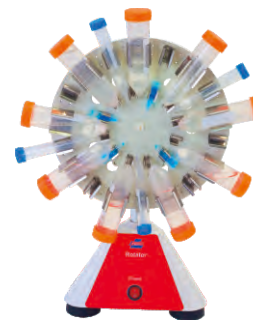
Model: TR-02UA
 Speed Range: 10~40rpm
 Ambient Temp.: 4~60°C
 Dimension: 2x148x195mm
 Power: 10W



Tube Rotators Accessories

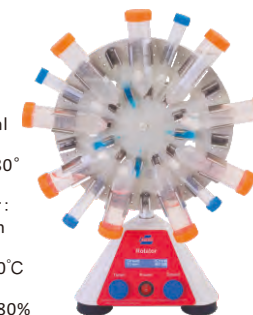
10ml / 15ml Tube Tray x 2 (TRA01)
 5ml / 7ml Tube Tray x 2 (TRA02)
 1.5ml / 2ml Tube Tray x 2 (TRA03)
 0.5ml / 0.8ml Tube Tray x 2 (TRA04)
 50ml Tube Tray x 1 (TRA05)
 Magnetic Platform for Liquid Mixing
 in Bags x 1 (TRA06)

▶ Tube Rotators



TR-03A

Model: TR-03A
 Speed Range: 24rpm
 Max. Capacity: 12x50ml
 Rotating Angle: 90~180°
 Rotating Disk Diameter :
 φ 250mm
 Ambient Temp.: 5°C~40°C
 Relative Humidity: ≤80%



TR-04UA

Model: TR-04UA
 Speed Range: 2~80rpm
 Display: LCD
 Timer Range: 0~99h59min
 Max. Capacity: 12x50ml
 Rotating Angle: 90~180°
 Rotating Disk Diameter :
 φ 250mm
 Ambient Temp.: 5°C~40°C
 Relative Humidity: ≤80%



0~90° Angle Adjustable

Tube Holder Assembly Accessories



Multi-Type Tube Holder
 Assembly (TRA19)



2ml Tube Holder Assembly
 (TRA20)



15ml Tube Holder Assembly
 (TRA21)



50ml Tube Holder Assembly
 (TRA22)



50ml Tube Holder
 (TRA15)



5ml / 10ml / 15ml / 20ml Tube Holder
 (TRA16)



2ml Tube Holder
 (TRA17)

▶ High Profile Tube Rotators



TR-05UA

Model: TR-05UA
 Speed Range: 5~80rpm
 Display: LED
 Timer Range: 0~99h59min
 Tube Holder Angle: 95~180°
 (6 Adjustment Angle: 95°112°129°146°163°180°)
 Carousel Diameter:
 15x50ml Tube Holder, Tube Carousel: φ290mm



* Note: Lift black knob before adjusting angle.

Tube Holder Assembly Accessories



1.5ml/2.0ml
 Tube Holder Assembly
 (TRA23)



15ml
 Tube Holder Assembly
 (TRA24)



50ml
 Tube Holder Assembly
 (TRA25)



10/15ml + 5/7ml
 Tube Holder Assembly
 (TRA26)



14mm Culture Tube
 Drum Disk
 (TRA27)



18.5mm Culture Tube
 Drum Disk
 (TRA28)

▶ Vortex Mixer



VM-01UA

Model: VM-01UA
 Orbit: φ4.5mm
 Speed Range: 0~3000rpm
 Standard Platform Dimension: φ 76mm
 Max. Capacity: 0.5kg
 Ambient Temp.: 5°C~40°C
 Relative Humidity: ≤80%
 Dimension: 205x155x108mm
 Power: 24W



VM-02UA

Model: VM-02UA
 Orbit: φ4.5mm
 Speed Range: 200~3000rpm
 Display: LED
 Standard Platform Dimension: φ 76mm
 Max. Capacity: 0.5kg
 Ambient Temp.: 5°C~40°C
 Relative Humidity: ≤80%
 Dimension: 205x155x108mm
 Power: 24W

Accessories:



Standard Vortex Head
 (VMA01)



Universal Vortex Head
 (VMA02)



Large Vortex Head
 (VMA03)



Tube Foam Adapter
 (VMA04)



Tube Foam Adapter
 (VMA05)



Microplate
 Vortex Head
 (VMA06)



Microplate
 Foam Adapter
 (VMA07)



Combination
 Tube Foam Adapter
 (VMA08)



PCR Tube Foam Adapter
 (VMA09)



50ml Tube
 Foam Adapter
 (VMA10)

▶ Mini Vortex



VM-03UA



VM-03RUA



VM-03GUA



VM-03PUA

Accessories



Red Vortex Head
(VMA11)



Blue Vortex Head
(VMA12)



Green Vortex Head
(VMA13)



Purple Vortex Head
(VMA14)

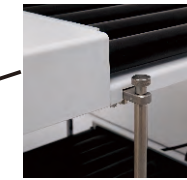
Model: VM-03UA
 Diameter: ϕ 4.5mm
 Max. Capacity: 80ml (1 Tube)
 Max. Tube Diameter: ϕ 30mm
 Speed: 3000rpm
 Ambient Temp.: 5~40°C
 Dimension: 96x85mm
 Color: Blue (VM-03UA)
 Red (VM-03RUA)
 Green (VM-03GUA)
 Purple (VM-03PUA)
 Power: 5W

▶ Tube / Bottle Rollers

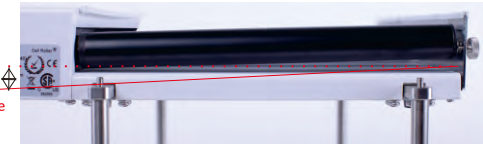


Stackable Roller
MR-01UA

Model: MR-01UA
 No. of Roller Bars: 6 Standard Up to 11 Max rollers optional
 Roller Speed: 0.5~80rpm
 Roller Dimension (Dx L): ϕ 28x269mm
 Available Tube or Bottles:
 Max. ϕ 120mm bottle or tubes
 Timer Range: 0~999min or Continuous
 Max. Capacity: 6.5kg (Incl. Container)
 Stackable: Yes
 Ambient Temp.: 5°C~60°C
 Relative Humidity: \leq 95%
 Dimension (W x D x H): 378x360x72mm
 Power: 10w



(MR-01U and MR-03U can be stacked with accessories)



Level
18mm
(0.7")
Swing Angle

(Combining both rolling and swinging motions)

3D Swing Angle Roller
MR-03UA

Model: MR-03UA
 No. of Roller Bars: 11
 Roller Speed: 0.5~80rpm
 Roller Dimension (Dx L): ϕ 25x269mm
 Swing Orbit: 18mm
 Available Tube or Bottles:
 Max. ϕ 120mm bottle or tubes
 Timer Range: 0~999min or Continuous
 Max. Capacity: 6.5kg (Incl. Container)
 Stackable: Yes
 Ambient Temp.: 5°C~60°C
 Relative Humidity: \leq 95%
 Power: 10w
 Dimension (W x D x H): 378x360x72mm

Accessories



Fixed Angle Roller Bar
(MRA01)



3D Roller (MRA07)



Stackable Accessories
(MRA04)



O-Ring (MRA02)



O-Ring (MRA03)



Control Box (MRA05)

▶ Orbital Shakers



Orbital Shakers
SYC-2102A



Model: SYC-2102A
Rotating method: Orbital
Orbit: 26mm
Speed: 30~300rpm
Max. Capacity: 10kg
Timer Range: 0-99h59min
Ambient Temp.: 5~40°C
Relative Humidity: ≤80%
Platform Dimensions: 400x400mm
Dimension (L x W x H):
432x535x190mm
Max. Power: 85W

▶ OS Series Small Shaker



Small Shaker
OS-03UA

Model: OS-03UA
Orbit Diameter: φ20mm
Speed: 30~300rpm
Max. Capacity: 2.5kg
Timer Range: 0~99h59min
Ambient Temp.: 5~40°C
Relative Humidity: ≤80%
Platform Dimensions: 307x267mm
Dimensions: 345x240x111mm
Max. Power: 8.5W

▶ 2D Shaker



NS-14UA
Adjustable Swing
2D Shaker

Model: NS-14UA
Speed Range: 1~50rpm
Title Angle: 1~15° (adjustable in 1° increment)
Shaking Method: 2D swing
Speed Accuracy: 1rpm
Max. Capacity: 4.5kg
Timer Range: 0~9999min
Platform Dimensions: 307x267mm
Dimension: 440x296x209mm



NS-04A

Model: NS-04A (Analog)
Speed Range: 24rpm
Title Angle: ±10°
Platform Dimensions:
307x267mm
Ambient Temp.: 5~40°C
Relative Humidity: ≤80%
Power: 4W
Dimension: 380x290x150mm



NS-05UA

Model: NS-05UA (Digital)
Speed Range: 2~80rpm
Speed increment: 1rpm
Title Angle: ±10°
Platform Dimensions:
307x267mm
Timer Range: 0~99h59min
Display: LCD
Ambient Temp.: 5~40°C
Relative Humidity: ≤80%
Power: 10W
Dimension: 380x290x150mm

▶ 3D Shakers



NS-10A
Fixed speed 3D Shaker

Model: NS-10A
Speed Range: 24rpm
Title Angle: 20°
Speed Accuracy: 1rpm
Max. Capacity: 0.8kg
Platform Dimensions: 307x267mm
Dimension: 440x296x261mm



NS-11UA
20° Digital 3D Shaker

Model: NS-11UA
Speed Range: 2~60rpm
Title Angle: 20°
Speed Accuracy: 1rpm
Max. Capacity: 0.8kg
Timer Range: 0~99h59min
Platform Dimensions: 307x267mm
Dimension: 440x296x255mm



NS-12UA
7° Digital 3D Shaker

Model: NS-12UA
Speed Range: 2~80rpm
Title Angle: 7°
Speed Accuracy: 1rpm
Max. Capacity: 0.8kg
Timer Range: 0~99h59min
Platform Dimensions: 307x267mm
Dimensions: 440x296x189mm



NS-13UA
Multi-function 3D Shaker

Model: NS-13UA
Speed Range: 5~100rpm
Swing Angle: 0~360°
Vibrating Angle: 0~5°
Title Angle: 7°
Max. Capacity: 1kg
Platform Dimensions: 307x267mm
Dimension: 440x296x226mm
Orbit: 23mm



NS-01A
Mini 3D Shaker

Model: NS-01A
Speed Range: 24rpm
Title Angle: 20°
Max. Capacity: 0.8kg
Ambient Temp.: 5~40°C
Relative Humidity: ≤80%
Platform Dimensions: 260x260mm
Dimension: 260x260x190mm
Power: 20W

▶ OS Shakers



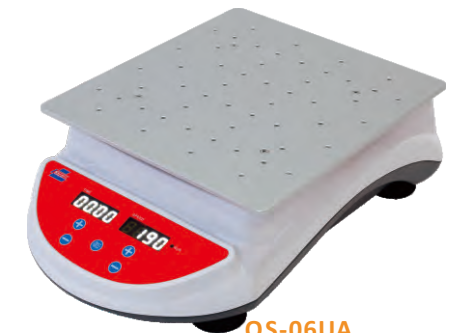
OS-05UA
Adjustable Angle 3D Shaker

Model: OS-05UA
Speed Range: 5~120rpm
Platform Dimensions: 307x267mm
Speed Accuracy: 1rpm
Title Angle: 0~12°
Max. Capacity: 9.8kg
Timer Range: 0~99h59min
Dimension: 440x296x218mm



OS-07UA
Microplate Orbital Shaker

Model: OS-07UA
Speed Range: 150~1000rpm
Platform Dimensions: 275x235mm
Orbital Diameter: φ2.5mm
Speed Accuracy: ±1% (@≤299rpm)
±2% (@>299rpm)
Max. Capacity: 4kg
Timer Range: 0~99h59min
Dimension: 440x296x142mm



OS-06UA
Multi-function Orbital Shaker

Model: OS-06UA
Speed Range: 50~450rpm
Platform Dimensions: 310x284mm
Orbital Diameter: φ 10mm
Speed Accuracy: ±1rpm (@≤100rpm)
±1% (@>100rpm)
Max. Capacity: 4.5kg
Timer Range: 0~99h59min
Dimension: 440x296x129mm

▶ Mini Centrifuges



MLX-104
 Model: MLX-104
 Speed: 4000rpm
 Rel. G-force: 900g
 Ambient Temp.: 5~40°C
 Relative Humidity: ≤80%
 Dimension: 155x140x115mm
 Color: Pink



MLX-106
 Model: MLX-106
 Speed: 6000rpm
 Rel. G-force: 2000g
 Ambient Temp.: 5~40°C
 Relative Humidity: ≤80%
 Dimension: 155x140x115mm
 Color: Ivory-white



MLX-110
 Model: MLX-110
 Speed: 10000rpm
 Rel. G-force: 5000g
 Ambient Temp.: 5~40°C
 Relative Humidity: ≤80%
 Dimension: 155x140x115mm
 Color: Blue

Accessories



MLXF-1
 (0.5ml Tube Adapter)



MLXF-2
 (0.2ml Tube Adapter)



MLXF-3
 (0.2ml Tube Strip Rotor)



MLXF-7
 (1.5ml Standard Rotor)

▶ Magnetic Stirrers



MS-01FUA
 Super Thin Stirrer

Model: MS-01FUA
 Speed Range: 15~1500rpm
 Max. Stirring Capacity: 500ml
 Max. Stir Bar Length: ≤30mm
 Platform Dimensions: 110x110mm
 Ambient Temp.: 5~40°C
 Relative Humidity: ≤80%
 Dimension: 175x125x20.5mm
 Power: 6W



MS-01UA
 LED Display Stirrer

Model: MS-01UA
 Speed Range: 80~2000rpm
 Max. Stirring Capacity (Water): 2000ml
 Max. Stir Bar Length: ≤50mm
 Platform Dimensions: 140x140mm
 Display: LED
 Ambient Temp.: 5~40°C
 Dimension: 160x200x48mm
 Power: 24W



MS-01TUA
 Touch Screen Stirrer

Model: MS-01TUA
 Speed Range: 80~2000rpm
 Max. Stirring Capacity: 2000ml
 Max. Stir Bar Length: ≤50mm
 Display: LCD Touch Screen
 Ambient Temp.: 5~40°C
 Platform Dimensions: 140x140mm
 Dimension: 160x200x48mm
 Power: 24W

▶ MS Series single position stirrer



MS-01AUA

Model: MS-01AUA
 Speed: 0~1500rpm
 No. of Stirrer Positions: 1
 Max. Stirring Capacity (Water): 10000ml
 Max. Stir Bar Length: ≤80mm
 Ambient Temp.: 5~40°C
 Platform Dimensions: 175x175mm
 Dimension: 355x240x120mm
 Power: 7.5W



MS-01DUA

Model: MS-01DUA
 Speed: 80~1500rpm
 No. of Stirrer Positions: 1
 Max. Stirring Capacity (Water): 10000ml
 Max. Stir Bar Length: ≤80mm
 Display: LCD
 Timer Range: 0~99h59min
 Ambient Temp.: 5~40°C
 Platform Dimensions: 175x175mm
 Dimension: 355x240x120mm
 Power: 12W

▶ Hot Plate Stirrers

Model: MS-01HA / MS-01H7A / MS-01H10A

Speed: 80~1500rpm

Speed Accuracy: 10rpm

Max. Stirring Capacity (Water): 10L / 10L / 20L

Max. Stir Bar Length: 80mm

No. of Stirrer Positions: 1

Display: LCD

Platform Dimensions:
 175x175mm / 175x175mm / 254x254mm

Temp. Deviation: @100°C : ≤±10°C

Temp. Fluctuation: @100°C : ≤±5°C

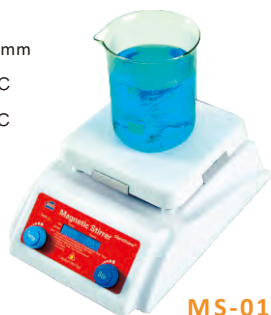
Ambient Temp.: 5~40°C

Dimension: 355x240x129mm /
 355x240x129mm /
 442x299x152mm

Power: 1000W



MS-01HA



MS-01H7A



MS-01H10A

▶ Multi-position Hot Plate Stirrers



MS-05HA

Model: MS-05HA
 Speed: 0rpm, 100rpm~1200rpm
 Temp. Range: Ambient Temp.+5°C~120°C
 Max. Stirring Capacity (Water): 500ml
 Max. Stir Bar Length: ≤50mm
 No. of Stirrer Positions: 5
 Distance between positions: 95mm
 Max. Power: 220W
 Platform Material: Black Glass Ceramic
 Ambient Temp.: 5~40°C
 Relative Humidity: ≤90%
 Platform Dimensions: 475x95mm
 Dimension: 130x612x78mm



MS-10HA

Model: MS-10HA
 Speed: 0rpm, 100rpm~1200rpm
 Temp. Range: Ambient Temp.+5°C~120°C
 Max. Stirring Capacity (Water): 500ml
 Max. Stir Bar Length: ≤50mm
 No. of Stirrer Positions: 10
 Distance between positions: 95mm
 Max. Power: 450W
 Platform Material: Black Glass Ceramic
 Ambient Temp.: 5~40°C
 Relative Humidity: ≤90%
 Platform Dimensions: 475x190mm
 Dimension: 214x612x78mm



MS-15HA

Model: MS-15HA
 Speed: 0rpm, 100rpm~1200rpm
 Temp. Range: Ambient Temp.+5°C~120°C
 Max. Stirring Capacity (Water): 500ml
 Max. Stir Bar Length: ≤50mm
 No. of Stirrer Positions: 15
 Distance between positions: 95mm
 Max. Power: 660W
 Platform Material: Black Glass Ceramic
 Ambient Temp.: 5~40°C
 Relative Humidity: ≤90%
 Platform Dimensions: 475x285mm
 Dimension: 310x612x78mm

▶ Multi-position Magnetic Stirrers



Model: MS-04SUA
 Speed: 80~2000rpm
 No. of Stirrer Positions: 4
 Distance between positions: 128mm
 Max. Stirring Capacity (Water): 1000ml
 Max. Stir Bar Length: ≤50mm
 Platform Dimensions: 250x280mm
 Platform Material: SUS304
 Ambient Temp.: 5~50°C (Water)
 5~40°C (Air)
 Dimension: 280x398x40mm
 Power: 30W



MS-04SUA



MS-06SUA

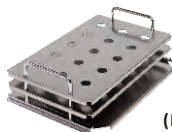
Model: MS-06SUA
 Speed: 80~2000rpm
 No. of Stirrer Positions: 6
 Distance between positions: 128mm
 Max. Stirring Capacity (Water): 1000ml
 Max. Stir Bar Length: ≤50mm
 Platform Dimensions: 385x280mm
 Platform Material: SUS304
 Ambient Temp.: 5~50°C (Water)
 5~40°C (Air)
 Dimension: 280x528x40mm
 Power: 45W

MS-15SUA

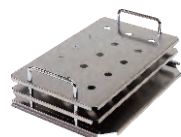
Model: MS-15SUA
 Speed: 80~2000rpm
 No. of Stirrer Positions: 15
 Distance between positions: 64mm
 Max. Stirring Capacity (Water): 100ml
 Max. Stir Bar Length: ≤20mm
 Platform Dimensions: 385x280mm
 Platform Material: SUS304
 Ambient Temp.: 5~50°C (Water)
 5~40°C (Air)
 Dimension: 280x528x40mm
 Power: 45W



**Tube Rack for
 15 position stirrer
 φ 30 Tube Holder
 (MSA10, 15xφ 30 Hole)**



**Tube Rack for
 15 position stirrer
 φ 20 Tube Holder
 (MSA11, 15xφ 20 Hole)**



**Tube Rack for
 15 position stirrer
 φ 16 Tube Holder
 (MSA12, 15xφ 16 Hole)**



▶ Multi-position Magnetic Stirrers



MS-04BSUA

Model: MS-04BSUA
 Speed: 80~2000rpm
 No. of Stirrer Positions: 4
 Distance between positions: 128mm
 Max. Stirring Capacity (Water): 1000ml
 Max. Stir Bar Length: ≤50mm
 Platform Dimensions: 250x254mm
 Platform Material: SUS304
 Ambient Temp.: 5~50°C (Water)
 5~40°C (Air)
 Dimension: 280x264x43mm
 Power: 30W



MS-06BSUA

Model: MS-06BSUA
 Speed: 80~2000rpm
 No. of Stirrer Positions: 6
 Distance between positions: 128mm
 Max. Stirring Capacity (Water): 1000ml
 Max. Stir Bar Length: ≤50mm
 Platform Dimensions: 384x254mm
 Platform Material: SUS304
 Dimension: 390x264x42mm
 Ambient Temp.: 5~50°C (Water)
 5~40°C (Air)
 Power: 40W



MS-15SUA

Model: MS-15BSUA
 Speed: 80~2000rpm
 No. of Stirrer Positions: 15
 Distance between positions: 64mm
 Max. Stirring Capacity (Water): 100ml
 Max. Stir Bar Length: ≤20mm
 Platform Dimensions: 385x254mm
 Platform Material: SUS304
 Ambient Temp.: 5~50°C (Water)
 5~40°C (Air)
 Dimension: 390x264x42mm
 Power: 20W



(Works in Water Bath)

▶ Mini Water Bath

Model: WB-01A
 Temp. Range: Ambient +5°C~100°C
 Temp. Uniformity: ±0.3°C (@37°C)
 Display: LCD
 Bath Volume: 240ml
 Max. Power: 100W
 Ambient Temp.: 5~40°C
 Programmable: 6 Sections
 Dimension: 262x143x96mm



WB-02A

Model: WB-02A
 Temp. Range: Ambient +5°C~100°C
 Temp. Uniformity: ±0.3°C (@37°C)
 Display: LED
 Bath Volume: 240ml
 Max. Power: 90W
 Ambient Temp.: 5~40°C
 Programmable: None
 Dimension: 262x143x96mm



WBA14 (Vapor Cover)

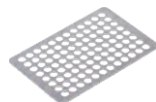
Accessories



Model: **WBA10 (5ml Tube Holder)**
 Hole Diameter: 5ml (15x φ 13.5mm)



Model: **WBA11 (1.5ml/2ml Tube Holder)**
 Hole Diameter: 1.5ml/2ml (28x φ 11mm)



Model: **WBA12 (96 Microplate Holder)**
 Hole Diameter: 0.2ml (96x φ 7.6mm)



Model: **WBA13 (Combination Tube Holder)**
 Hole Diameter: 5ml, 1.5ml, 0.2ml (5x φ 16mm, 7x φ 11mm, 22x φ 7.6mm)

▶ Dry Bath

Model: DB-01A
 No. of Chamber: 1
 Temp. Range: Ambient + 5°C~120°C
 Display: LCD
 Temp. Fluctuation: @50~100°C :
 ≤ ±0.15°C
 @100.1~120°C :
 ≤ ±0.2°C
 Programmable: 6 Sections
 Ambient Temp.: 5°C~40°C
 Dimension: 262x143x96mm
 Power: 100W



DB-01A

Model: DB-03A
 No. of Heating Areas: 2
 Temp. Range: Ambient + 5°C~120°C
 Display: LCD
 Temp. Fluctuation: @50~100°C :
 ≤ ±0.15°C
 @100.1~120°C :
 ≤ ±0.2°C
 Programmable: 6 Sections
 Ambient Temp.: 5°C~40°C
 Dimension: 320x220x111mm
 Power: 150W



DB-03A

Model: DB-04A
 No. of Heating Areas: 4
 Temp. Range: Ambient Temp. + 5°C~120°C
 Display: LCD
 Temp. Fluctuation:
 @50~100°C: ≤ ±0.15°C
 @100.1~120°C: ≤ ±0.2°C
 Programming: Up to 6 steps
 Ambient Temp.: 5°C~40°C
 Dimension: 430x220x111mm
 Power: 300W

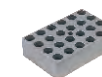


DB-04A



DB-02A

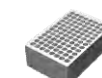
Model: DB-02A
 No. of Chamber: 1
 Temp. Range: Ambient + 5°C~120°C
 Temp. Fluctuation: @50~100°C: ≤ ±0.15°C
 @100.1~120°C: ≤ ±0.2°C
 Display: LED
 Programmable: Single
 Ambient Temp.: 5°C~40°C
 Dimension: 262x143x96mm
 Power: 100W



DBA01
 (117.8x77.8x31.5mm)



DBA02
 (58.9x77.8x31.5mm)



DBA04
 (117.8x77.8x40mm)



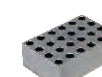
DBA05 (Vapor Cover)



DBA06
 (117.8x77.8x40mm)



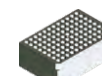
DBA07
 (58.9x77.8x40mm)



DBA08
 (117.8x77.8x40mm)



DBA09
 (117.8x77.8x40mm)

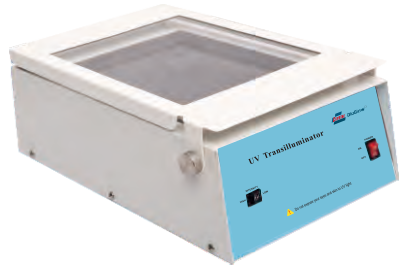


DBA12
 (117.8x77.8x40mm)



DBA23
 (117.8x77.8x50mm)

▶ UV Lamps



UV Transilluminators

Model: ZT-10A / ZT-20A / ZT-30A
 Wavelength: 254nm / 312nm / 365nm
 Filter Size: 200x240mm
 Power: 50W
 Dimensions: 242x380x114mm



Handheld UV Lamps

Model: BG-12-AA / BG-32-AA / BG-42-AA
 Lithium Battery Operated
 (Model with Automatic safely switch)
 BG-12A / BG-32A / BG-42A
 Lithium Battery Operated
 (Model without Automatic safely switch)
 UV Wavelength: 254nm/365nm/365nm&254nm
 UV Window Size: 150x50mm
 Dimensions: 88x415x60mm

Model: BG-10A / BG-30A / BG-40A
 AC Operated Model
 UV Window Size: 150x50mm
 Dimensions: 88x415x60mm
 UV Wavelength: 254nm/365nm/365nm&254nm

▶ Microincinerators



ST-14A

Model: ST-14A
 Max.Temp in Operation Mold: 900°C ± 5°C
 Max.Temp in Stand-along Mold: 600°C ± 50°C
 Depth of Heated Area: 130mm
 Sterilization Time: 3~5s
 Power: 200W
 Angle Adjustment: Yes
 Max. Sample Diameter: φ 14mm
 Ambient: 4~60°C
 Relative Humidity: ≤90% Non-condensing



ST-14FA

Model: ST-14FA
 Max. Temp in Operation Mold: 900°C ± 5°C
 Max. Temp in Stand-along Mold: 600°C ± 50°C
 Depth of Heated Area: 130mm
 Sterilization Time: 3~5s
 Power: 200W
 Angle Adjustment: No
 Max. Sample Diameter: φ 14mm
 Ambient: 4~60°C
 Relative Humidity: ≤90% Non-condensing