

Human anti-SARS-CoV2 IgM ELISA Kit

V1.1

CatalogueNo.: FTEH4940

Size: 96T

Reactivity: Human

Range:0.78-50ng/ml

Sensitivity: 0.469ng/ml

Application: For quantitative detection of Anti-SARS-CoV2 IgM in serum, plasma and other biological fluids.

Storage:2-8°C for 6 months

Principle: Indirect

NOTE: FOR RESEARCH USE ONLY.

Kit Components

No.	Item	Specifications(96T)	Storage
E001	ELISA Microplate(Dismountable)	8×12	2-8°C/-20°C
E002	Standard	1 vial	2-8°C
E039	Sample/Standard Dilution Buffer	20ml	2-8°C
E003	HRP-labeled Antibody(Concentrated)	60ul	2-8°C(protect from light)
E040	Antibody Dilution Buffer	5ml	2-8°C
E024	TMB Substrate	5ml	2-8°C(protect from light)
E026	Stop Solution	5ml	2-8°C
E038	Wash Buffer(25X)	30ml	2-8°C
E006	Plate Sealer	5pieces	
E007	Product Description	1 copy	

Wuhan Fine Biotech Co., Ltd.

www.fn-test.com

1

Available in Canada from...

MJS
BioLynx
INC.

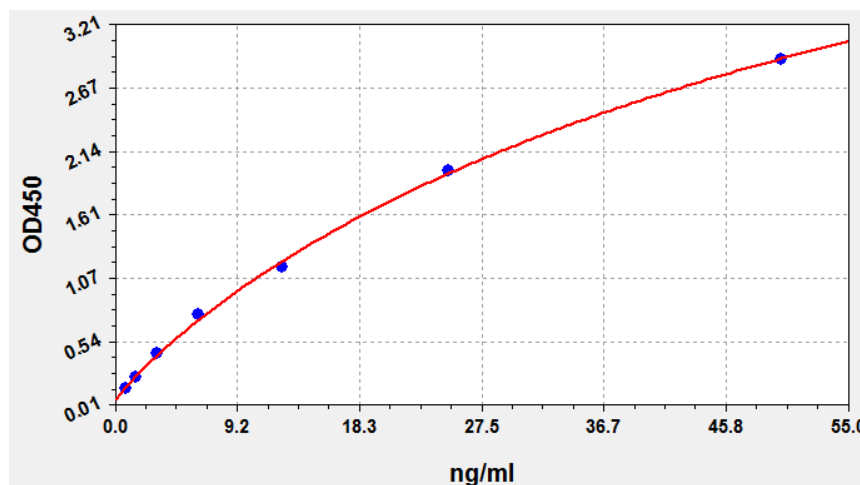
1-888-593-5969 • www.biolynx.ca • tech@biolynx.ca



Typical Data & Standard Curve

Results of a typical standard operation of aAnti-SARS-CoV2 IgM ELISA Kit are listed below. This standard curve was generated at our lab for demonstration purpose only. Users shall obtain standard curve as per experiment by themselves. (N/A=not applicable)

STD.(ng/ml)	OD-1	OD-2	Average	Corrected
0	0.062	0.064	0.063	0.000
0.781	0.141	0.149	0.145	0.082
1.562	0.239	0.251	0.245	0.182
3.125	0.453	0.431	0.442	0.379
6.25	0.756	0.778	0.767	0.704
12.5	1.140	1.198	1.169	1.106
25	2.005	1.955	1.98	1.917
50	2.850	2.992	2.921	2.858



Wuhan Fine Biotech Co., Ltd.

B9 Bld, High-Tech Medical Devices Park, No. 818 Gaoxin Ave. East Lake High-Tech Development Zone. Wuhan, Hubei, China(430206)

Tel : (0086)027-87384275

Fax: (0086)027-87800889

www.fn-test.com

Sample test results

Patients from mobile cabin hospital. Plasma sample dilution 1:100

Patients (ug/ml)				Healthy volunteers(ng/ml)			
1#	1.2	5#	1.7	1#	< 0.3	5#	not detect
2#	0.6	6#	1.2	2#	not detect	6#	not detect
3#	1.3	7#	0.8	3#	not detect	7#	< 0.3
4#	1.1	8#	0.9	4#	< 0.3	8#	not detect

Specificity

This assay has high sensitivity and excellent specificity for detection of Anti-SARS-CoV2 IgM. No significant cross-reactivity or interference between Anti-SARS-CoV2 IgM and analogues was observed.

Note: Limited by current skills and knowledge, it is difficult for us to complete the cross-reactivity detection between Anti-SARS-CoV2 IgM and all the analogues, therefore, cross reaction may still exist.

Recovery

Matrices listed below were spiked with certain level of Anti-SARS-CoV2 IgM and the recovery rates were calculated by comparing the measured value to the expected amount of Anti-SARS-CoV2 IgM in samples.

Matrix	Recovery Range (%)	Average (%)
Serum(n=5)	85-105	94
EDTA Plasma(n=5)	85-103	91
Heparin Plasma(n=5)	90-99	94

Linearity

The linearity of the kit was assayed by testing samples spiked with appropriate concentration of Anti-SARS-CoV2 IgM and their serial dilutions. The results were demonstrated by percentage of calculated concentration to the expectation.

Wuhan Fine Biotech Co., Ltd.

B9 Bld, High-Tech Medical Devices Park, No. 818 Gaoxin Ave. East Lake High-Tech Development Zone. Wuhan, Hubei, China(430206)

Tel : (0086)027-87384275

Fax: (0086)027-87800889

www.fn-test.com

Sample	1:2	1:4	1:8
Serum(n=5)	90-105%	86-102%	86-105%
EDTA Plasma(n=5)	83-99%	84-101%	84-95%
Heparin Plasma(n=5)	82-95%	80-98%	82-100%

Precision

Intra-Assay: CV<8%

Inter-Assay: CV<10%

Stability

The stability of ELISA kit is determined by the loss rate of activity. The loss rate of this kit is less than 10% within the expiration date under appropriate storage condition.

Standard(n=5)	37°C for 1 month	2-8°C for 6 months
Average (%)	80	95-100

To minimize extra influence on performance, operation procedures and lab conditions, especially room temperature, air humidity, incubator temperature should be strictly controlled. It is strongly suggested that the same operator performs the whole assay from the beginning to the end.

Wuhan Fine Biotech Co., Ltd.

B9 Bld, High-Tech Medical Devices Park, No. 818 Gaoxin Ave. East Lake High-Tech Development Zone. Wuhan, Hubei, China(430206)

Tel : (0086)027-87384275

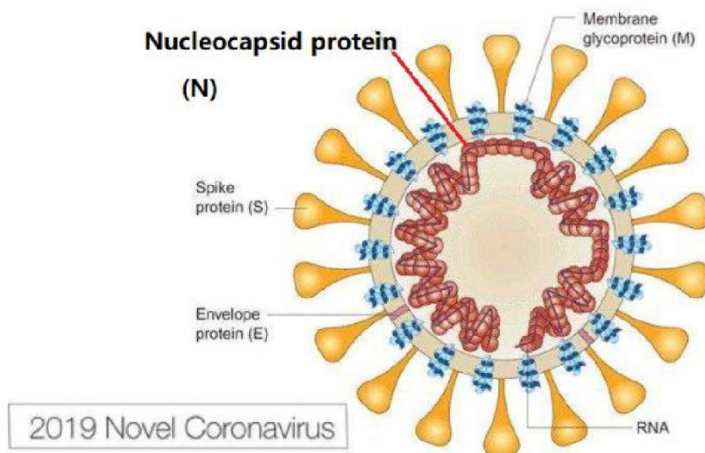
Fax: (0086)027-87800889

www.fn-test.com

Operation Procedure

Principle of the Assay

This kit was based on indirect enzyme-linked immune-sorbent assay technology. Antigen was pre-coated onto 96-well plates. And the HRP conjugated antibody was used as detection antibodies. The standards, test samples and HRP conjugated detection antibody were added to the wells subsequently, and washed with wash buffer. TMB substrates were used to visualize HRP enzymatic reaction. TMB was catalyzed by HRP to produce a blue color product that changed into yellow after adding acidic stop solution. The density of yellow is proportional to the target amount of sample captured in plate. Read the O.D. absorbance at 450nm in a microplate reader, and then the concentration of target can be calculated.



Sequence of Nucleocapsid protein (antigen)

```
MSDNGPQNQRNAPRITFGGSPDSTGNSQNGERSGARSKQRRPQGLPNNTASWFTALTQHGKEDLKFPRGQGVPINTNSSP
DDQIGYYRRATRRIRGGDGKMKDLSRWYFYLLGTGPEAGLPYGANKDGIWVATEGALNTPKDHIGTRNPANNAIVLQLP
QGTTLPKGFYAEGSRGGSQASSRSSSRNRSSRNSTPGSSRGTS PARMAGNGGDAALALLLLDRLNQLESKMSGKGGQQQG
QTVTKKSAEASKKPRQKRTATKAYNVTQAFGRRGPEQTQGNFGDQELIRQGTDYKHWPQIAQFAPSASAFFGMSRIGMEV
TPSGTWLTYTGAIKLDDKDPNFKDQVILLNKHIDAYKTFPTEPKDKKKKADETQALPQRQKKQQVTVLLPAADLDDFSKQLQ
QSMSSADSTQA
```

Precautions

1. To inspect the validity of experiment operation and the appropriateness of sample dilution proportion, pilot experiment using standards and a small number of samples is recommended.
2. After opening and before using, keep plate dry.
3. Before using the kit, spin tubes and bring down all components to the bottom of tubes.
4. Storage TMB reagents avoid light.
5. Washing process is very important, not fully wash easily cause a false positive and high background.
6. Duplicate well assay is recommended for both standard and sample testing.
7. Don't let microplate dry at the assay, for dry plate will inactivate active components on plate.
8. Don't reuse tips and tubes to avoid cross contamination.

Wuhan Fine Biotech Co., Ltd.

B9 Bld, High-Tech Medical Devices Park, No. 818 Gaoxin Ave. East Lake High-Tech Development Zone. Wuhan, Hubei, China(430206)

Tel : (0086)027-87384275

Fax: (0086)027-87800889

www.fn-test.com

9. Avoid using the reagents from different batches together.

Material Required but Not Supplied

1. Microplate reader (wavelength:450nm)
2. 37°C incubator
3. Automated plate washer
4. Precision single and multi-channel pipette and disposable tips
5. Clean tubes and Eppendorf tubes
6. Deionized or distilled water

Washing

Manual: Discard the solution in the plate without touching the side walls. Clap the plate on absorbent filter papers or other absorbent material. Fill each well completely with 350ul wash buffer and soak for 1 to 2 minutes, then aspirate contents from the plate, and clap the plate on absorbent filter papers or other absorbent material.

Automatic: Aspirate all wells, and then wash plate with 350ul wash buffer. After the final wash, invert plate, and clap the plate on absorbent filter papers or other absorbent material. It is recommended that the washer shall be set for soaking 1 minute. (**Note:** set the height of the needles; be sure the fluid can be sipped up completely)

Sample Collection and Storage (universal)

- **Serum:** Place whole blood sample at room temperature for 2 hours or put it at 2-8°C overnight and centrifugation for 20 minutes at approximately 1000×g, Collect the supernatant and carry out the assay immediately. Blood collection tubes should be disposable, non-pyrogenic, and non-endotoxin.
- **Plasma:** Collect plasma using (EDTA-Na₂ or heparin as an anticoagulant. Centrifuge samples for 15 minutes at 1000×g at 2 - 8°C within 30 minutes of collection. Collect the supernatant and carry out the assay immediately. Avoid hemolysis, high cholesterol samples.
- **Other Biological Fluids:** Centrifuge samples for 20 minutes at 1000×g at 2-8°C. Collect supernatant and carry out the assay immediately.

Note: Samples to be used within 5 days can be stored at 2-8°C, besides that, samples must be stored at -20°C (assay ≤1 month) or -80°C (assay ≤2 months) to avoid loss of bioactivity and contamination. Avoid multiple freeze-thaw cycles. The hemolytic samples are not suitable for this assay.

Sample Dilution

The user should estimate the concentration of target protein in the test sample, and select a proper dilution factor to make the diluted target protein concentration fall in the optimal detection range of the kit. Dilute the sample with the provided dilution buffer, and several trials may be necessary. The test sample must be well mixed with the dilution buffer. And also standard curves and sample should be making in pre-experiment. If samples with very high concentrations, dilute samples with PBS first and then dilute the samples with Sample Dilution.

The matrix components in the sample will affect the test results, which it need to be diluted at least 1/50 with Sample Dilution Buffer before testing!

Wuhan Fine Biotech Co., Ltd.

B9 Bld, High-Tech Medical Devices Park, No. 818 Gaoxin Ave. East Lake High-Tech Development Zone. Wuhan, Hubei, China(430206)

Tel : (0086)027-87384275

Fax: (0086)027-87800889

www.fn-test.com

Reagent Preparation and Storage

Bring all reagents and samples to room temperature for 20 minutes before use.

1, Wash Buffer:

If crystals have formed in the concentrate, you can warm it with 40°C water bath (Heating temperature should not exceed 50°C) and mix it gently until the crystals have completely been dissolved. The solution should be cooled to room temperature before use.

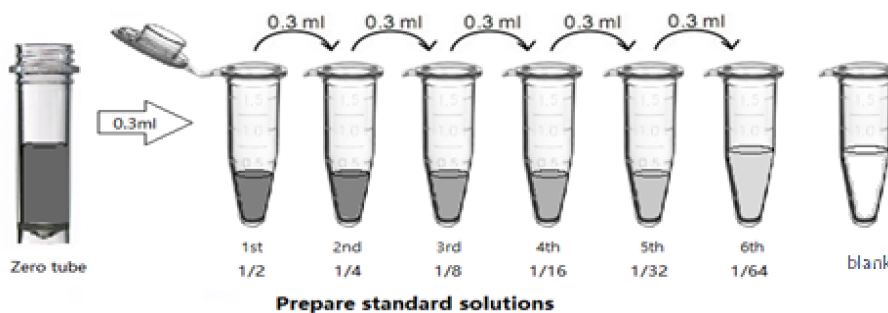
Dilute 30ml Concentrated Wash Buffer into 750ml Wash Buffer with deionized or distilled water. Put unused solution back at 2-8°C.

2, Standards:

1). Add 0.3ml Sample Dilution Buffer into one tube(labeled as zero tube),transfer 0.3ml from standard tube (100ng/ml) to zero tube and mix them thoroughly.

Note: If the standard tube concentration higher than the range of the kit , please dilute it and labeled as zero tube.

2). Label 7 EP tubes with 1/2, 1/4, 1/8, 1/16, 1/32, 1/64 and blank respectively. Add 0.3ml of the Sample Dilution Buffer into each tube. Add 0.3ml of the above Standard solution (from zero tube) into 1st tube and mix them thoroughly. Transfer 0.3ml from 1st tube to 2nd tube and mix them thoroughly. Transfer 0.3ml from 2nd tube to 3rd tube and mix them thoroughly, and so on. Sample Dilution Buffer was used for the blank control.



Note: It is best to use Standard Solutions within 15min.

3, Preparation of HRP-labeled Antibody Working Solution:

Prepare it within 30min before experiment.

- 1) Calculate required total volume of the working solution: 50ul / well × quantity of wells. (Allow 55-60ul more than the total volume.)
- 2) Dilute the HRP-detection antibody with Antibody Dilution Buffer at 1:100 and mix them thoroughly. (i.e. Add 1μl HRP-labeled antibody into 99μl Antibody Dilution Buffer.)

Assay Procedure

When diluting samples and reagents, they must be mixed completely and evenly. Before adding TMB into wells, equilibrate TMB Substrate for 30 min at 37 °C. It is recommended to plot a standard curve for each test.

Wuhan Fine Biotech Co., Ltd.

B9 Bld, High-Tech Medical Devices Park, No. 818 Gaoxin Ave. East Lake High-Tech Development Zone. Wuhan, Hubei, China(430206)

Tel : (0086)027-87384275

Fax: (0086)027-87800889

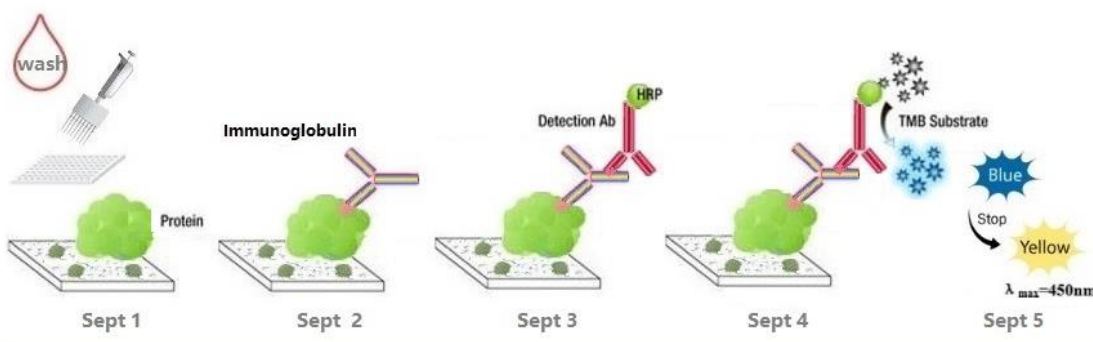
www.fn-test.com

1. Set standard, **test samples (diluted at least 1/50 with Sample Dilution Buffer)**, control (blank) wells on the pre-coated plate respectively, and then, records their positions. It is recommended to measure each standard and sample in duplicate. **Wash plate 2 times before adding standard, sample and control (blank) wells!**
2. **Prepare Standards:** Aliquot 50 μ l of zero tube, 1st tube, 2nd tube, 3rd tube, 4th tube, 5th tube, 6th tube and Sample Dilution Buffer (blank) into the standard wells.
3. **Add Samples:** Add 50 μ l of properly diluted sample into test sample wells.
4. **Incubate:** Seal the plate with a cover and incubate at 37°C for 30 minutes.
5. **Wash:** Remove the cover and discard the plate content, and wash plate 3 times with Wash Buffer. Do NOT let the wells dry completely at any time.
6. **HRP-labeled Antibody:** Add 50 μ l HRP-labeled antibody working solution into above wells (standard, test sample and blank wells). Add the solution at the bottom of each well without touching the sidewall, cover the plate and incubate at 37°C for 30 minutes.
7. **Wash:** Remove the cover, and wash plate 5 times with Wash Buffer, and let the Wash Buffer stay in the wells for 1-2 minute each time.
8. **TMB Substrate:** Add 50 μ l TMB Substrate into each well, cover the plate and incubate at 37°C in dark within 10-15 minutes. (**Note:** The reaction time can be shortened or extended according to the actual color change, but not more than 30minutes. You can terminate the reaction when apparent gradient appeared in standard wells.)
9. **Stop:** Add 50 μ l Stop Solution into each well. The color will turn yellow immediately. The adding order of Stop Solution should be as the same as the TMB Substrate Solution.
10. **OD Measurement:** Read the O.D. absorbance at 450 nm in Microplate Reader immediately after adding the stop solution.

Regarding calculation, (the relative O.D.450) = (the O.D.450 of each well) – (the O.D.450 of blank well). The standard curve can be plotted as the relative O.D.450 of each standard solution (Y) vs. the respective concentration of the standard solution (X). The target concentration of the samples can be interpolated from the standard curve. It is recommended to use some professional software to do this calculation, such as **Curve Expert 1.3 or 1.4.**

Note: If the samples measured were diluted, multiply the dilution factor to the concentrations from interpolation to obtain the concentration before dilution.

Summary



Wuhan Fine Biotech Co., Ltd.

B9 Bld, High-Tech Medical Devices Park, No. 818 Gaoxin Ave. East Lake High-Tech Development Zone. Wuhan, Hubei, China(430206)

Tel : (0086)027-87384275

Fax: (0086)027-87800889

www.fn-test.com

Step1: Wash plate 2 times before adding Standard, **Sample (diluted at least 1/50 with Sample Dilution Buffer)** and Control (blank) wells!

Step2: Add 50µl standard or sample to each well and incubate for 30 minutes at 37°C.

Wash step: Aspirate and wash plates 3 times.

Step3: Add 50µl HRP-labeled antibody working solution to each well and incubate for 30 minutes at 37°C.

Wash step: Aspirate and wash plates 5 times.

Step4: Add 50µl TMB Substrate Solution. Incubate 10-15 minutes at 37°C.

Step5: Add 50µl Stop Solution. Read at 450nm immediately and calculation.

Wuhan Fine Biotech Co., Ltd.

www.fn-test.com