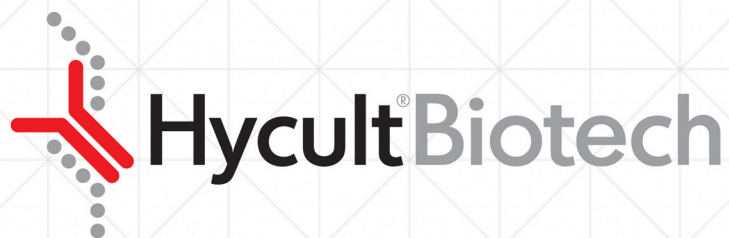


Granulocyte and lymphocyte proteins



bringing innate immunity to the **next level**

Available in Canada from...

MJS
BioLynx
INC.

1-888-593-5969 • www.biolynx.ca • tech@biolynx.ca



Granulocyte and lymphocyte proteins

Hycult Biotech is a leading world-class manufacturer of research reagents in the field of innate immunity. We are a specialized partner in the development and manufacturing of assays, antibodies, proteins and peptides. With the focus on innate immunity, we pay special attention to products relating to antimicrobial peptides, complement, acute phase proteins, TLR, LPS and microbial toxins.

Basophils, eosinophils and neutrophils are the three cell types that belong to the granulocytes. Granulocytes are a type of white blood cells characterized by the presence of granules in their cytoplasm. The nucleus shaped into the usual three lobes are typical for a granulocyte. They are released by bone marrow under the influence of complement through a process called granulopoiesis. Activation of granulocytes and lymphocytes play a central role in the pathogenesis of many autoimmune diseases and are an important clinical hallmark for acute inflammation, sepsis and allergic conditions. Granulocytes and lymphocytes also form the first line of defense to many pathogens by releasing antimicrobial peptides.

Validated ELISA kit sample types:

BF: Bronchoalveolar fluid	BM: Breast milk
CM: Cell culture medium	CS: Cell culture supernatant
F: Feces	P: Plasma
S: Serum	SP: Sputum
U: Urine	TH: Tissue homogenate
WF: Wound fluid	

ELISA kits			
Product name	Species	Sample types	Cat. #
Arginase I	Human	CS P S	HK322
Azurocidin	Human	P S SP	HK352
BPI	Human	BF CM P WF	HK314
Calprotectin	Human	F P S U	HK379
Calprotectin, Rapid Fecal	Human	F	HK382
Elafin	Human	CS P S	HK318
Elastase	Human	CS P	HK319
HNP1-3	Human	CS P	HK317
Lactoferrin	Human	BM CS F P U	HK329
LL-37	Human	CS P	HK321
MPO	Human	CS P SP	HK324
MPO	Mouse	CS P TH	HK210
MPO	Rat	CS P TH	HK105
NGAL	Human	CS P U	HK330
Proteinase 3	Human	P S	HK384
S100A9/Calprotectin	Mouse	P S	HK214
SLPI	Human	BF CS P S SP U	HK316

Can't find the sample type you want for an ELISA kit?

Ask the support team to assist you with your research needs on support@hycultbiotech.com!

Looking for other related products?

We have more than ten folders that highlight different segments of our portfolio, such as antimicrobial peptides and adhesion molecules!

How many tests would you like?

Almost all our ELISA kits are available in both a 1-plate and a 2-plate format!

Validated antibody applications:

F: Frozen sections	FC: Flow cytometry
FS: Functional studies	IA: Immunoassay
IF: Immunofluorescence	IP: Immunoprecipitation
P: Paraffin sections	W: Western blot

Need a custom formulation?

Ask us and we will advise you on the possibilities!

Antibodies to human			
Product name	Clone	Applications	Cat. #
Alpha-1-antitrypsin	2C1	IA IP P W	HM2289
Alpha-1-antitrypsin	3C11	IA W	HM2358
Apoptotic Neutrophils	BOB93	FC W	HM2154
Arginase I	6G3	FC IA	HM2162
Arginase I	9C5	F IA IP	HM2163
Arginase I	D1.2	FC IA W	HM2324
Azurocidin	z6718	F IF W	HM2312
Azurocidin	z6721	IA W	HM2310
Azurocidin	z6733	IA W	HM2311
Basophils	2D7	F FC IF P W	HM2279
Beta-defensin 1	pAb	W	HP9059
Beta-defensin 2	pAb	IA P W	HP9057
BPI	3F9	IA	HM2041
BPI	4E3	FC FS IA	HM2170
BPI	4H5	IA	HM2042
BPI	pAb	IA IP	HP9022
Calprotectin	27E10	F FC IA IF IP P W	HM2156
CD3	SPV-T3b	F IF	HM2124
CD14	18D11	FC FS IA	HM2224
CD83	ELBE-1	FC IA W	HM2321
CD96	NK92.39	FC FS	HM2210
CD154	24-31	FC FS IA IP W	HM2222
CD163	RM3/1	F FC FS IF IP W	HM2157
CRISP-3	pAb	IA P W	HP9033
DC-SIGN	DCN47.5	FC FS	HM2209
Defensin 5	8C8	F IA W	HM2228
Elafin	pAb	IA P W	HP9025
Elafin	TRAB2F	IA P W	HM2063
Elafin	TRAB2O	IA P W	HM2062
Elastase	265-3K1	IA W	HM2174
Elastase	pAb	IA	HP9027
GILT	MaP.IP30	FC IF IP	HM2284
HNP1-3	D21	F FC FS IA IF IP P W	HM2058
IDO	pAb	FC IA IF P W	HP5004
Lactoferrin	265-1K1	F IA W	HM2173
Lactoferrin	pAb	IA IP W	HP9034
LL-37/CAP-18	1-1C12	IA IF P W	HM2071
LL-37/CAP-18	3D11	FS IF P W	HM2070
LRG	2F5.A2	IA	HM2013

Antibodies to human

Product name	Clone	Applications	Cat. #
Lysozyme	pAb	IA IP W	HP9035
Macrophages mature	25F9	F FC P W	HM2158
Mannose receptor	15-2	F FC FS W	HM2056
MARCO	PLK-1	F FC FS IF IP W	HM2208
MPO	266-6K1	IA W	HM2164
MPO	B7	F FC IA W	HM2288
MRP-8	7C12/4	FC IA W	HM2175
MRP-14	1H9	FC IA W	HM2176
NGAL	697	IA IF	HM2193
Proteinase 3	PR3G-2	FC FS IA W	HM2172
Proteinase 3	WGM2	F FC FS IA IF IP P W	HM2171
S100A7	9F3	FS IA IF P W	HM2328
SIRL-1	1A5	FC FS IP W	HM2309
SLPI	31	F IA IP P W	HM2037
SLPI	pAb	IA IP W	HP9024
SPLUNC1	5F5B12	F IA IF W	HM2314
SPLUNC1	5F5G1	F IA IF W	HM2315
Transferrin receptor 1	3B8 2A1	FC F IA IP W	HM2134

Antibodies to other species

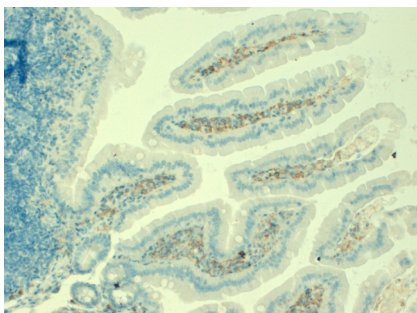
Product name	Clone	Species	Applications	Cat. #
CD4	15-8A2	Rat	F FC	HM3001
CD8	15-11C5	Rat	F FC P	HM3003
CD68	ED1	Rat	F FC IP P W	HM3029
CD163	ED2	Rat	F FC IF IP P W	HM3025
Defensin 5	R3	Rabbit	F FC IA W	HM4008
IDO1	pAb	Rat	F P W	HP8036
Lactoferrin	5F12.1.2	Bovine	IA W	HM4012
Lactoferrin	a-bC-lobe	Bovine	IA P W	HM4013
Lactoferrin	pAb	Bovine	IA IP W	HP7001
MCL	WEN42	Rat	F FC FS IP W	HM3042
Mincle	WEN43	Rat	FC FS	HM3041
MPO	2D4	Rat	FC IA	HM3030
MPO	B7	Rat	F FC IA W	HM3039
SR-BI	3D12	Rat	F FC FS	HM3027

Want a conjugated antibody?

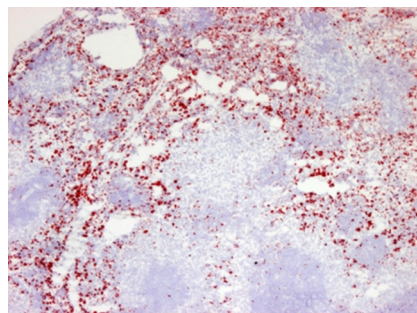
Visit our website to see all available formats or contact us!

Need a custom formulation?

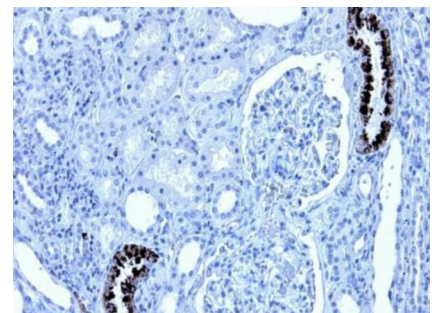
Ask us and we will advise you on the possibilities!



Macrophages in mouse colon. Staining of paraffin section using clone BM8 (Cat. # HM1066)



CD68 in rat spleen. Staining of frozen section using clone ED1 (Cat. # HM3029)



Alpha-1-antitrypsin in human kidney. Staining of paraffin section using clone 2C1 (Cat. # HM2289)

Antibodies to mouse

Product name	Clone	Applications	Cat. #
CD13	ER-BMDM1	F FC P	HM1083
CD14	Sa14-2	FC FS IF IP W	HM1060
CD68	FA-11	F FC IF IP W	HM1070
CD71	ER-MP21	F FC FS	HM1085
CD96	6A6	FC FS IA W	HM1105
CD200R3	Ba91	FC FS IP W	HM1104
CD200R3	Ba103	FC FS IP W	HM1103
Dectin-1	2A11	F FC FS IP	HM1067
GILT	MaP.mGILT6	FC IF IP W	HM1128
Lactoferrin	1A10	FC IA	HM1132
Lactoferrin	1E4	IA	HM1133
LPLUNC1	pAb	IF P W	HP8044
Ly-6C	ER-MP20	F FC IA P	HM1082
Macrophages F4/80	BM8	F FC P W	HM1066
MARCO	ED31	F FC FS IP	HM1068
MGL	ER-MP23	F FC FS	HM1081
MHC class I	ER-HR52	F FC	HM1090
MHC class I	ER-MP42	F FC	HM1091
MHC class II	ER-TR3	F FC	HM1087
Monocyte/Macrophages	ER-HR3	F FC P	HM1088
MPO	8F4	F FC IA IF	HM1051
MPO	B7	F FC IA W	HM1135
Neutrophils	NIMP-R14	F FC FS P	HM1039
OSCAR	5B8	FC FS	HM1121
RBC	34-3C	FC FS	HM1120
S100A9	MU14-2A5	F FS IA IF P W	HM1102
Siglec-H	440c	F FC FS P	HM1075
SIGN-R1	ER-TR9	F FC FS	HM1080
Spi-6	pAb	FC IA W	HP8035
SPLUNC1	pAb	P W	HP8043
SR-A	2F8	F FC FS IP W	HM1061

Proteins and peptides

Product name	Species	Quantity	Cat. #
Alpha-defensin 6, Peptide	Human	50 µg	HC2137
Calprotectin, Recombinant	Human	50 µg	HC2120
Cathepsin G, Peptide	Human	50 µg	HC2138
CRAMP, Peptide	Mouse	50 µg	HC1106
Elafin, Recombinant	Human	50 µg	HC4011
HNP-1, Peptide	Human	50 µg	HC2134
HNP-2, Peptide	Human	50 µg	HC2135
HNP-3, Peptide	Human	50 µg	HC2136
HNP1-3, Recombinant	Human	100 µg	HC4014
LL-37, Peptide	Human	50 µg	HC4013



What we stand for

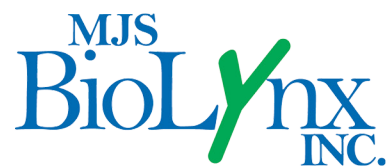
- Original manufacturer
- > 20 years experience
- Support within one working day
- Innate immunity focus
- Reliable and robust
- Scientific drive

Hycult Biotech, bringing innate immunity to the **next level**



www.hycultbiotech.com

Hycult Biotech
is distributed by:



1-888-593-5969

www.biolynx.ca • tech@biolynx.ca

Even though the information provided is verified and believed to be accurate, there is always a chance that it is imprecise or may be outdated. Please make sure to visit our website for the most recent product information or contact us in case you have any questions or comments.