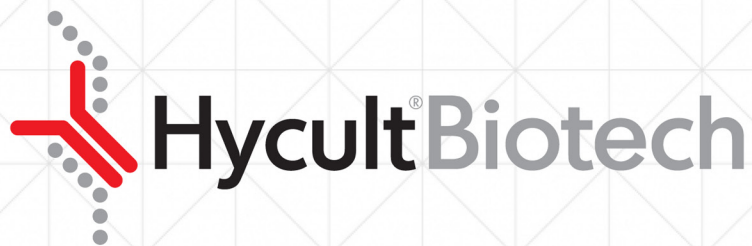


# Adhesion molecules, cytokines & chemokines



bringing innate immunity to the **next level**

*Available in Canada from...*

MJS  
**BioLynx**  
INC.

1-888-593-5969 • [www.biolynx.ca](http://www.biolynx.ca) • [tech@biolynx.ca](mailto:tech@biolynx.ca)



# Adhesion molecules and cytokines

Hycult Biotech is a leading world-class manufacturer of research reagents in the field of innate immunity. We are a specialized partner in the development and manufacturing of assays, antibodies, proteins and peptides. With the focus on innate immunity, we pay special attention to products relating to antimicrobial peptides, complement, acute phase proteins, TLR, LPS and microbial toxins.

Adhesion molecules are proteins involved in the binding of cells either to other cells or to components of the extracellular matrix. In addition, adhesion molecules can participate in cell signaling or display enzymatic activities. Cell junctions play an important role in cell-to-cell adhesion and cell barrier functions. Together with gap junctions and adherens junctions, tight junctions form apical junctional complexes in epithelial and endothelial cells. These junctions hold cells together and prevent the passage of molecules and ions through the intercellular space. Cytokines and their receptors regulate inflammatory, physiological and pathological pathways.

Validated ELISA kit sample types:

<b>BM:</b> Breast milk	<b>CS:</b> Cell culture supernatant
<b>P:</b> Plasma	<b>S:</b> Serum
<b>U:</b> Urine	

## Can't find the sample type you want for an ELISA kit?

Ask the support team to assist you with your research needs on [support@hycultbiotech.com](mailto:support@hycultbiotech.com)!

ELISA kits for human		
Product name	Sample types	Cat. #
sMAdCAM	BM CS P S U	HK337
sTNF-RII	CS P S	HK302
TNF-alpha	CS P S	HK307

Validated antibody applications:

<b>F:</b> Frozen sections	<b>FC:</b> Flow cytometry
<b>FS:</b> Functional studies	<b>IA:</b> Immunoassay
<b>IF:</b> Immunofluorescence	<b>IP:</b> Immunoprecipitation
<b>P:</b> Paraffin sections	<b>W:</b> Western blot

Antibodies				
Product name	Clone	Species	Applications	Cat. #
AIF-1	1022-5	Human	IA P W	HM2184
Alpha-5 Integrin	NKI-SAM1	Human	FC F	HM2126
Alpha-Catenin	1G5	Human	FC IF IP W	HM2118
Alpha-V/Beta-3 Integrin	BV3	Human	FC IA IF IP P	HM2034
ASGPR	8D7	Rat	F FC IA IF W	HM3020
Beta1 Integrin	BV7	Human	FC FS IA IP W	HM2033
Beta-3 integrin subunit	BV4	Human	F FS IA IP P W	HM2035
Beta-Catenin	9F2	Human	FC IF IP W	HM2112
CD11/CD18 (LFA-1)	24	Human	F FC FS IA IP	HM2183
CD11b	Bear-1	Human	F FC IP	HM2125
CD34	MEC14.7	Mouse	F FC IF IP P W	HM1015
CD44	NKI-P2	Human	F FC P	HM2127
CD56	123C3	Human	F IF P	HM2132
CD56	NKI-nbl-1	Human	FC F	HM2133
CD73	4G4	Human	F FC FS IF IP W	HM2215

## Antibodies

Product name	Clone	Species	Applications	Cat. #
CD155	3F1	Mouse	FC FS	HM1106
CD166	AZN-L50	Human	F FC FS IF IP P W	HM2002
Desmoglein-1	27B2	Human	F FC IF IP W	HM2113
Desmoglein-2	6D8	Human	F IF IP W	HM2114
Desmoglein-3	5G11	Human	IF IP P W	HM2115
DNAM-1	TX92	Mouse	FC FS	HM1137
EMAP-II	546-2	Human	FC IA P W	HM2185
EMAP-II	M7/1	Mouse	FC FS IA W	HM1124
Endoglin	E9	Human	F FC IA IP W	HM2140
Endomucin	V.7C7.1	Mouse	F FC IA IF IP P W	HM1108
Endothelial cell antigen	RECA-1	Rat	F FC IF P	HM3012
E-selectin	ENA1	Human	F FS IA IP	HM4001
E-selectin	ENA2	Human	F FS IA IF	HM4003
E-selectin, biotinylated	pAb	Human	F IA W	HP9017
FHL2	F4B2-B11	Human	F IF P W	HM2136
Galectin-2	1H6	Human	FC IA	HM2305
Galectin-2	H3F3D1	Human	FC IA	HM2306
Galectin-3	B2C10	Human	F FC FS IA P W	HM2186
Galectin-8	106.1	Human	FC FS IA	HM2278
GEF-H1	B4/7	Human	F IF IP W	HM2152
HAKAI	pAb	Human	F IF W	HP9038
ICAM-1	HM.1	Human	IA IF	HM4004
ICAM-1	HM.2	Human	F FC IA IF IP P	HM2104
ICAM-1	pAb	Human	F IA IP W	HP9018
IFN-alpha	F18	Mouse	FC FS IA W	HM1001
IFN-gamma	F12	Human	F FS IA IP	HM2003
IFN-gamma	F14	Human	F IA IP	HM2004
IFN-gamma	pAb	Human	F FS IA W	HP9019
IFN-gamma	F1	Mouse	FS IA IP	HM1003
IFN-gamma	F3	Mouse	FS IA IP	HM1002
IFN-gamma	pAb	Rat	F FS IA W	HP8007
IL-10	pAb	Human	F FS IA IF P W	HP9016
IL-1ra3	2D11	Human	F IA W	HM2055
IL-1RI	D14e3	Mouse	W	HM1025
IL-1RI	D1f3	Mouse	FS W	HM1024
IL-1RI	Reg20	Mouse	IA IP W	HM1023
IL-1RI	Reg21	Mouse	FS IA IP W	HM1022
IL-1RII	8.5	Human	FC IA W	HM2053
IL-1RII	6G5	Human	IA	HM2054
IL-1RII	pAb	Human	IA	HP9007
IL-2	pAb	Human	FS IA IP W	HP9004
IL-6	5E1	Human	FS IA IP W	HM2001
IL-6	pAb	Human	FS IA P W	HP9005
IL-6	MP5-20F3	Mouse	FS IA IP	HM1004
IL-6	MP5-32C11	Mouse	FS IA IP W	HM1005

## Antibodies

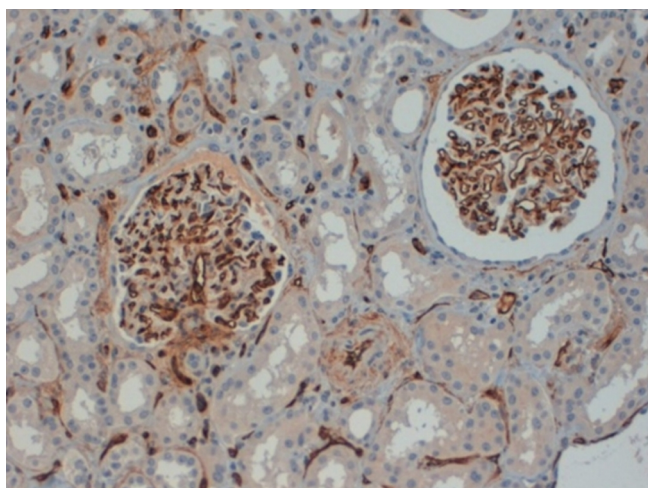
Product name	Clone	Species	Applications	Cat. #
IL-6	pAb	Mouse	FS IA W	HP8008
IL-8	pAb	Human	FS IA IP W	HP9006
IP-10	6D4	Human	F FC IA IF W	HM2030
JAM-A	BV16	Human	F FC IF IP W	HM2098
JAM-A	M.Ab.F11	Human	FC FS IA IF IP P W	HM2099
JAM-A	BV12	Mouse	FC IF IP W	HM1050
JAM-A, domain 1	pAb	Human	FC P W	HP9041
JAM-A, domain 2	pAb	Human	FC P W	HP9042
JAM-C	19H36	Mouse	F FC IA IP	HM1056
JAM-C	CRAM-18F26	Mouse	F FC FS IA IP	HM1057
L-Afadin	3	Rat	F IA IP W	HM3013
LTbeta receptor	5G11	Mouse	FC FS IA W	HM1079
MAdCAM-1	314G8	Human	F FS IA P W	HM2207
MCP-1	MNA1	Human	F FC FS IA IP P W	HM2011
MCP-1	pAb	Human	F FS IA IP W	HP9009
MCP-1	ECE.2	Mouse	F W	HM1019
M-CSF	ER-MP58	Mouse	FC F	HM1089
Nectin-2	502-57	Mouse	F FC IA IP W	HM1052
Nectin-3	103-A1	Mouse	F FC FS IA IF IP	HM1053
Occludin	pAb	Human	F IF W	HP9047
PECAM-1	BV8	Human	FC IA IF IP	HM2039
PECAM-1	ER-MP12	Mouse	F FC IA IP P W	HM1084
PECAM-1	MEC7.46	Mouse	F FC IF IP P	HM1013
Plakoglobin	15F11	Human	IF IP W	HM2116
PLVAP	174/2	Human	F FC IF IP W	HM2214
SI-CLP	1C11	Human	IF W	HM2240
sLeptin Receptor	2F1	Human	F IA P W	HM2187
TNF-alpha	4H31	Human	F FC FS IA IP W	HM2009
TNF-alpha	52B83	Human	F FC W	HM2010
TNF-alpha	5N	Human	FS IA	HM2218
TNF-alpha	pAb	Human	FC FS IA W	HP9001
TNF-alpha	T1	Human	FC FS IA W	HM2024
TNF-alpha	T3	Human	FC IA IP W	HM2026
TNF-alpha	pAb	Mouse	F FC FS IA P W	HP8001
TNF-alpha	V1q	Mouse	FC FS	HM1021
TNF-RI	H398	Human	F FC FS IA IP W	HM2020
TNF-RI	MR1-2	Human	F FC FS IA	HM2005
TNF-RI	pAb	Human	FS IA IP W	HP9002
TNF-RI	55R-170	Mouse	FC FS IA IP	HM1097
TNF-RI	HM104	Mouse	F FC IA IP	HM1009
TNF-RI	pAb	Mouse	FC FS IA IP W	HP8002
TNF-RII	80M2	Human	FC FS IA IF IP	HM2022
TNF-RII	MR2-1	Human	F FC FS IA IF IP W	HM2007
TNF-RII	pAb	Human	FC FS IA IP W	HP9003
TNF-RII	HM102	Mouse	F FC FS IA IP W	HM1011

## Antibodies

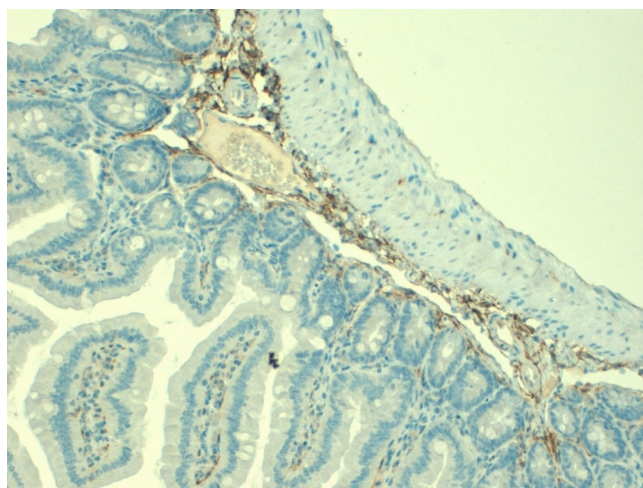
Product name	Clone	Species	Applications	Cat. #
TNF-RII	pAb	Mouse	FC FS IA IP W	HP8003
uPAR (D1 domain)	IIIB6	Human	F P W	HM2142
uPAR (D2 domain)	IIIB11	Human	F FC P W	HM2143
VAP-1	174-5	Human	F FC FS IF	HM2213
VAP-1	7-88	Mouse	F FC FS IF IP	HM1094
VCAM-1	1G11B1	Human	F FC FS IF IP	HM4006
VCAM-1	6C7.1	Mouse	F FC FS IF IP	HM1107
VE-Cadherin	BV9	Human	F FC FS IA IF IP W	HM2032
Viperin	MaP.VIP	Mouse	FC IF IP W	HM1016
Vitronectin	BV1	Human	FC IA IF IP W	HM2036
YKL-40	mAY	Human	FS IF IP W	HM2293
ZO-1	pAb	Human	FC IF	HP9056
ZO-1, alpha-	pAb	Human	F IF P W	HP9045
ZO-1, alpha+	pAb	Human	F FC IF P W	HP9044
ZO-2	pAb	Human	F IF W	HP9046

## Proteins

Product name	Species	Quantity	Cat. #
IFN-alpha, Recombinant	Mouse	10E6 units	HC1040
IFN-beta, Recombinant	Mouse	5 x 10E4 units	HC1050
IFN-gamma, Recombinant	Mouse	10E5 units	HC1020
IFN-gamma, Recombinant	Human	10E5 units	HC2030
IFN-gamma, Recombinant	Rat	10E5 units	HC3010
TNF-alpha, Recombinant	Mouse	5 x 10E4 units	HC1060
TNF-alpha, Recombinant	Human	5 x 10E4 units	HC2040



ZO-1, alpha- in human kidney. Staining of paraffin section with polyclonal antibody (Cat. # HP9045)



CD34 in mouse colon. Staining of paraffin section with clone MEC14.7 (Cat. # HM1015)

### Need a custom formulation?

Ask us and we will advise you on the possibilities!

### Want a conjugated antibody?

Visit our website to see all available formats!

### Product in bulk quantity?

Contact us for a customized quotation!



## What we stand for

- Original manufacturer
- > 20 years experience
- Support within one working day
- Innate immunity focus
- Reliable and robust
- Scientific drive

Hycult Biotech, bringing innate immunity to the **next level**



[www.hycultbiotech.com](http://www.hycultbiotech.com)

Hycult Biotech  
is distributed by:

MJS  
**BioLynx**  
INC.

**1-888-593-5969**

**[www.biolynx.ca](http://www.biolynx.ca) • [tech@biolynx.ca](mailto:tech@biolynx.ca)**

Even though the information provided is verified and believed to be accurate, there is always a chance that it is imprecise or may be outdated. Please make sure to visit our website for the most recent product information or contact us in case you have any questions or comments.